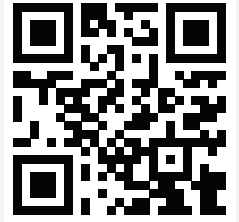


AN EXCLUSIVE MAGAZINE FOR THE SMART HOME INDUSTRY.

SMARTHOMETM WORLD

VOL 4 • NO 09
JANUARY 2025



FOLLOW US ON



www.smarthomeworld.in

10 COVER STORY

Can Existing Buildings Benefit from Automation and Smart Solutions?

Image Courtesy: Open Atelier

INSIDE



INTERVIEW

Jiri Konecny, Chairman, ELKO EP
Shares The Brand's Rapid Evolution
In India's Smart Home Sector.

24



CASE STUDY

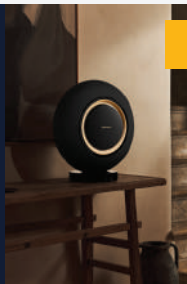
Ashok Reddy Bana Demonstrates
How Smart Technology is
Transforming Rustic Home.

41

BRAND CONNECT

A Comprehensive Profiles
Of Distributors And The
Key Brands They
Represent.

53



PRODUCT PREVIEW

Marantz Grand Horizon:
Redefining Premium
Wireless Audio.

62



SPECIAL REPORT

Latest Trends And
Updates From
CES 2025.

67

6th EDITION

International Exhibition
& Conference on
Smart Home Technology,
Home Automation, Audio -Video
& Intelligent Buildings



MUMBAI

8 • 9 • 10 MAY 2025

Jio WORLD CONVENTION CENTRE



BE A PART OF
**INDIA'S LARGEST SMART HOME
TECHNOLOGY EVENT**

REGISTER NOW

TITLE PARTNER REGISTRATION & BADGE PARTNER PLATINUM PARTNER VISITOR BAG PARTNER PLATINUM PARTNER PREMIUM PARTNERS PREMIUM PARTNERS PREMIUM PARTNERS SMART LIFE PARTNER

HAVELLS **Grabtree**

CP PLUS

ABB

OSUM

Cinebels

VINSHEK
SINCE 1987

MIANTIC AV

EMI

SMATO
See the difference

PREMIUM PARTNERS

HIKVISION
See Far, Go Further

PRO FX
HDF, Home Theater, Home Automation

Smart Node
Elevate the play of smart living

CAVITAK

RTI

benq

SONOS

ViewSonic
See the difference

LG Business Solutions

Optoma
Experience more

marantz

KFAX
KAPPA INTELLIGENT AUDIO

B&O

GALLO ACOUSTIC

rako

basalte

CASADIGI

AERO
Visual Brilliance

LOEWE

Lauritz Knudsen
Electrical & Automation

BuildTrack

MDT
TECHNOLOGIES

OKAS

Amree
ELECTRONICS

SOUND & VISION

raylogic

VSSL

TRINNOV

JBL

TATA POWER
GZ HOME

ESPRESSIF

FORMOVIE

EPSON

'INTERRA

TECHNOLOGY PARTNER

KNX
NATIONAL
INDIA

STRATEGIC PARTNER

CREDAI **MCHI**

KNOWLEDGE PARTNER

CEDIA

KNOWLEDGE PARTNER

WOMEN IN
TECHNOLOGY
INDIA

SUPPORTING PARTNER

ELECTRONIC SECURITY
ASSOCIATION OF INDIA

SUPPORTING PARTNER

3WAVE
ALLIANCE

MEDIA PARTNER

SMARTHOME
WORLD

EXHIBITION • NETWORKING • PRODUCT DEMO • CONFERENCE • TRAININGS

FOR BOOKINGS, PLEASE CONTACT:

Nazim Sawant +91 99304 26156 | nazim@smarthomeexpo.in

Monika Agnihotri +91 93210 24581 | monika@smarthomeexpo.in

Organised by:



messe frankfurt

www.smarthomeexpo.in



TRANSFORM YOUR LIVING SPACE

Experience the Pinnacle of Color Fidelity Upto 150" Screen



V5010i

4K RGB Laser TV Projector



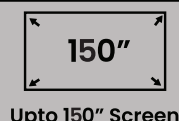
Powered by
androidtv 



CinematicColor™
95% BT.2020



TrueSound by
treVolo
(40w)



Upto 150" Screen



Corporate Office: BenQ India Pvt. Ltd.

9B Building, IIIrd Floor, DLF Cyber City, DLF Phase III, Gurgaon, Haryana, India - 122002

Tel: +91 124-450 1400, Fax: +91 124-450 1400





www.BenQ.in | sales.enquiryin@BenQ.com | 1800 419 9979



Scan here to know more

V5010i comes with 3-years on-site warranty.

The laser light source is also covered by a warranty of 3 years or 15,000 hours whichever is earlier.

www.BenQ.in | Like BenQ India on    

CONTENTS



10

10 Cover Story

A holistic view on whether retrofitting existing buildings with automation and smart technologies is a feasible option. Experts from various segments share their opinions on reimagining and rejuvenating existing structures with smart technology.

24 Interviews

Jiri Konecny, Chairman, ELKO EP, discussed the brand's rapid evolution in India and plans to expand through local manufacturing to become a market leader in India's smart home sector.

Trisha Bhardwaj, Chief Curator at Blink Box Studio Pvt Ltd, shares her insights on crafting innovative and evolving smart lighting solutions.

Siddharth Vasudevan Moorthy, Managing Director, Vascon Engineers Ltd., shares his perspective on how building automation has evolved from a luxury to a necessity in real estate.

Rajesh Doshi, Co-Founder and Director, Zebronic, shares his insights on advanced technologies like Dolby Atmos in their soundbars and DJ speakers and more.

41 Case Studies

Ashok Reddy Bana, Technical Manager, Reloto Automation Solution Pvt. Ltd., blends home automation and smart technology in this charming farmhouse to create a secure, user-friendly environment.

Architects Kavita A Batra and Ashish Batra in collaboration with Xsys Solutions fuses timeless coastal architecture with modern home automation, creating a harmonious residence for a client in Raipur.

53 Brand Connect

This new section is a comprehensive guide for architects, interior designers, system integrators, installers, and tech enthusiasts, offering a clear overview of the distributor network and the brands they retail across India.

63 Product Preview

BenQ has unveiled AI-powered projectors that use sensors to automatically adjust brightness, contrast, and colour according to the room's environment.

The Marantz Grand Horizon sets a new standard for premium wireless speakers, combining sleek design with powerful performance.

67 Special Reports

Recap of the 18th edition of Light + Intelligent Building Middle East that concluded successfully, drawing industry leaders to explore innovation, sustainability, and the future of lighting and building technologies.

A quick glance at CES 2025, which showcased the latest in smart technology, automation, and smart lighting to name a few, and highlighted groundbreaking innovations.

80 News

Explore the latest range of innovations in home automation, smart lighting, smart cameras, and audio-video solutions. Stay informed about cutting-edge technologies that are transforming modern living, and enhancing convenience.



5000 SERIES

Q Acoustics 5040. Ahead of the curve.

Featuring our innovative C³ Continuous Curved Cone™ design, the 5040 is a perfectly formed floorstander with the sound quality to move you.

marantz

D.
DEFINITIVE TECHNOLOGY

Magnet

HECO



LOEWE

BOG AMERICA
The natural choice since 1973

MISSION

episode

TAGA
HARMONY

artsound

QED

DEHLBACH

bridg

EPSON

LG

Optoma

Panasonic

ViewSonic
See the difference

Email : info@mzaudiodistribution.co.in | al@mzaudiodistribution.co.in | +91 9833006667

qacoustics.co.uk/5040



FROM THE EDITOR



SWATI BALGI

As we begin the new year with optimism, 2025 has already set an exciting tone for the industry, highlighted by two major events—the 18th edition of Light + Intelligent Building Middle East and CES 2025. These events showcased cutting-edge advancements in smart technology, automation, and smart lighting, offering a preview of the innovations that will define the year ahead.

In this issue, we explore the growing trend of retrofitting existing buildings with smart technologies. Our Cover Story dives into how architects and designers are reimagining existing structures by integrating automation solutions. We've gathered insights from industry experts on the advantages, challenges, and possibilities of revitalizing existing buildings with smart technology.

We also feature an exclusive interview with Jiri Konecny, Chairman of ELKO EP, who shares the brand's journey in India and their vision for future. Jiri's insights reflect the exciting future of ELKO EP as they continue to innovate and adapt to the Indian market.

Additionally, we bring you perspectives from Trisha Bhardwaj, Chief Curator at Blink Box Studio Pvt Ltd, on the evolving role of smart lighting solutions in modern home design. Siddharth Vasudevan Moorthy, Managing Director of Vascon Engineers Ltd., discusses how building automation has transitioned from a luxury to a necessity in real estate, driven by growing demand for sustainability and efficiency. Rajesh Doshi, Co-Founder and Director of Zebrionics, highlights the integration of advanced features like Dolby Atmos in their soundbars and DJ speakers, elevating the audio experience.

In our Case Study section, we showcase two outstanding smart projects where technology and automation have been seamlessly integrated, transforming spaces in both style and function. These examples offer inspiration for professionals looking to incorporate smart solutions into their designs.

We've also launched a new section Brand Connect that serves as a valuable resource for architects, interior designers, system integrators, installers, and tech enthusiasts. This guide provides a detailed overview of the distributor network and the brands they retail across India, helping professionals stay connected and informed.

Finally, in our Product Preview section, we highlight BenQ's AI-powered projectors, which automatically adjust brightness, contrast, and colour based on the room's environment, and the Marantz Grand Horizon, a premium wireless speaker that combines sleek design with powerful performance.

We hope you enjoy this issue, packed with insights, innovations, and expert opinions that set the stage for an exciting year ahead.

SMARTHOMETM WORLD

FOLLOW US ON



Chief Editor:
Swati Balgi
swati@smarthomeworld.in

Assistant Manager - Sales:
Monika Agnihotri
monika@smarthomeexpo.in

Marketing Head:
Sandeep Singh
sandeep@smarthomeworld.in

Tech Journalist:
Sunny Sawant
sunny@smarthomeworld.in

For More Information Contact Us:
+91 93210 24581



Published by:
WORLD MEDIA & EXPO LLP.

505, D-Definity, Jay Prakash Road no.1, Goregaon(East), Mumbai-400063 | www.smarthomeworld.in

Smart Home World thanks the various companies that have submitted information. For any editorial submissions, please contact Ms. Swati Balgi, Editor, at swati@smarthomeworld.in. The information published in News, Ongoing Trends and Product Gallery is as per the details furnished by the respective manufacturer/distributor. It does not reflect the views of Smart Home World or of the management of WORLD MEDIA & EXPO LLP.

FROM KEY TO KEYLESS

Dive into the world of smart security with our complete digital lock range—crafted for the future!



How would you like to **secure your home?**



Face



Palm



Fingerprint



Keypad



Card



Mobile
Access



OTP



Emergency
Key



Integrated Video
surveillance



WIFI
Enabled



amazon alexa



Google Assistant



EVERY DOOR DESERVES A **dorsët**



ALWAYS SAFE. ALWAYS TRUSTED.

Introducing the **SOS** Emergency Button



COMPREHENSIVE
SAFETY
SOLUTION



MULTI-USER
ACCESS FOR YOUR
PEACE OF MIND



IN-BUILT BATTERY
FOR UNINTERRUPTED
USE



EMERGENCY
ALERT VIA SMS AND
PHONE CALL



PANIC BUZZER

SCAN TO
KNOW MORE

**TATA POWER EZ HOME, INDIA'S MOST TRUSTED BRAND,
IS NOW ALSO THE SAFEST.**



1800 2 12345

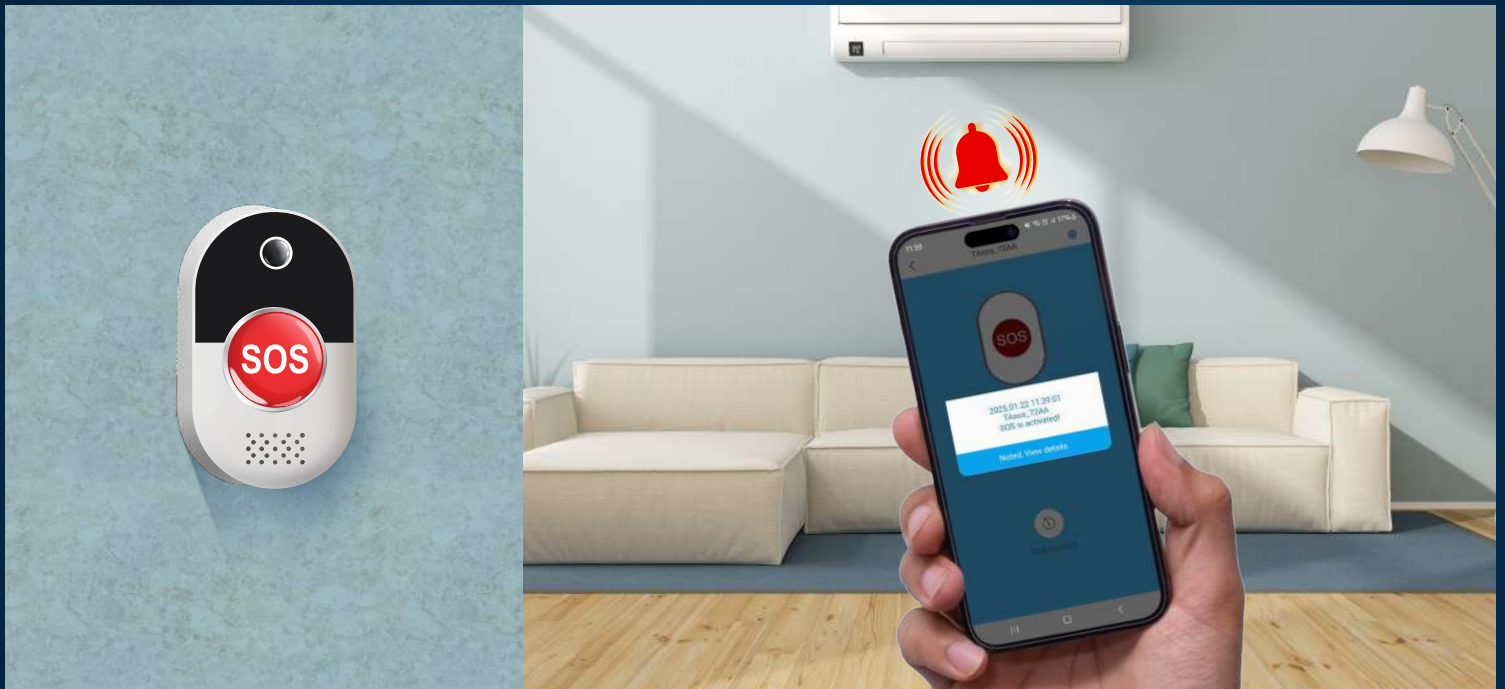


tatapower.com/ezhome



KEEPING YOUR LOVED ONES SAFE WITH TATA POWER EZ HOME'S IOT SECURITY DEVICES

In today's fast-paced urban lifestyle, where nuclear families are the norm, many of us face the challenge of balancing work and home life. For parents leaving young children in the care of nannies, or for individuals with elderly loved ones living alone, ensuring their safety and well-being is a constant concern. **Emergencies can strike unexpectedly, and having a reliable safety mechanism in place can make all the difference.**



Tata Power EZ Home understands these challenges and has stepped up to provide smart solutions for a safer home environment. With its cutting-edge IoT-enabled security devices, Tata Power EZ Home offers peace of mind by ensuring that help is always just a touch away.

The Smart Wi-Fi SOS Panic Button is one such innovative product that empowers individuals during emergencies. Whether it's a health crisis, a home intrusion, or any other urgent situation, the panic button sends an instant alert notification to designated contacts. Alongside, the Gas Leak Detector provides an early warning system for potentially hazardous situations, preventing tragedies before they occur.

These devices are not just technological marvels but also a lifeline, especially in homes where young children, elderly family members, or individuals with medical conditions reside. When activated, the SOS Panic Button triggers a notification and places a call to the nearest person on the

emergency contact list, enabling swift action. Similarly, the **Gas Leak Detector** ensures that any gas leakage is detected promptly, preventing mishaps that could endanger lives.

What sets these devices apart is their seamless integration with your smartphone via the Tata Power EZ Home app. This ensures you're always connected to your home, no matter where you are. The user-friendly interface allows you to monitor and control these devices with ease, providing a layer of safety that's both proactive and efficient.

With Tata Power EZ Home's IoT-based security solutions, you can safeguard your loved ones and respond effectively to emergencies. These devices embody the perfect blend of technology and compassion, offering you the reassurance that your home and family are protected, even when you're miles away.

Take the first step towards a safer home. Trust Tata Power EZ Home to keep your dearest ones safe, always.



Image Courtesy: Open Atelier

Transforming Existing Buildings with Automation and Smart Solutions

How feasible and sustainable is retrofitting existing buildings with automation and smart technologies? This article explores the benefits, challenges, and examples of integrating automation and smart solutions into existing buildings.

In India, the trend of refurbishing and retrofitting existing buildings is gradually gaining momentum, driven by a growing awareness of sustainability, resource conservation, and environmental responsibility. On a holistic view, the country is rapidly progressing towards rapid urbanization and new construction to accommodate the demand of the growing population, but there is a notable shift towards reimagining and rejuvenating existing structures. This trend

is particularly relevant in urban cities where space is limited, and the environmental impact of demolishing and rebuilding can damage the environment.

The Indian government and urban planners have also started acknowledging the environmental benefits of refurbishment. As a result, policies are beginning to align with sustainability goals, encouraging the reuse and repurposing of existing structures. The



Image Courtesy: LIGHT@WORK Design Consultants Pvt. Ltd.

economic benefits of refurbishment over new construction are becoming more evident. Retrofitting and upgrading existing buildings can be a more cost-effective solution compared to demolishing and rebuilding.

Opportunity and Advantages

Existing buildings can be retrofitted with intelligent lighting, climate control, security systems, and energy management solutions, all of which can be retrofitted into older structures. Plus, incorporating advanced security features such as smart locks, automated alarm systems, video surveillance and motion detectors can enhance the safety and security of older structures.

One notable example is The Oberoi Grand in Kolkata, a historical luxury hotel built in 1888. This iconic building, which combines colonial and traditional Indian architectural styles, has been equipped with modern smart systems, including smart lighting, climate control, and keyless entry, all seamlessly integrated into the heritage structure without compromising its aesthetic value. Similarly, The Taj Mahal Palace in Mumbai, established in 1903, features a mix of Indian, Islamic, and European styles. It has been retrofitted with state-

of-the-art automation systems, enhancing energy efficiency and guest comfort through automated lighting, temperature control, and integrated entertainment systems, while also incorporating advanced security features such as access control and surveillance.

In The Leela Palace in New Delhi, which occupies a historic site with traditional Indian palatial architecture, advanced building automation systems have been introduced in recent renovations. These include energy-efficient lighting, smart temperature control, and automated guest services, ensuring sustainability and operational efficiency without sacrificing luxury. Palace on Wheels, a luxury train in Rajasthan inspired by royal palaces, has also embraced smart automation. Despite its traditional design, the train features automated lighting, temperature regulation, and entertainment systems, offering passengers modern amenities while preserving its royal heritage.

The Indian National Congress Office in New Delhi, a significant historical building, has undergone retrofitting with modern automation solutions like automated lighting, climate control, and integrated security systems, making it more energy-efficient



Image Courtesy: Tanti Automatics Pvt. Ltd.

and aligned with contemporary building standards. Likewise, Taj Mansingh in New Delhi, a prestigious hotel built in the 1970s, recently integrated advanced automation technologies in a major renovation. The smart room controls, including lighting, curtains, temperature, and entertainment systems, can be adjusted with voice commands or buttons, while the security systems were upgraded to the latest standards.

Lastly, the Kochi-Muziris Biennale Venues in Kochi, which include several restored heritage buildings, have also been retrofitted with modern automation. The buildings, which host India's largest art exhibition, feature energy-efficient lighting, temperature control, and security systems, while automated solutions have been implemented in exhibition spaces to ensure optimal lighting and environmental conditions, enhancing the overall visitor experience. These examples demonstrate how India is successfully integrating smart technologies into existing buildings, preserving their historical charm while enhancing their functionality and sustainability.

Challenges of Retrofitting existing Buildings

Incorporating smart solutions into older buildings comes with several challenges, the most prominent being structural limitations. Many older buildings were not designed to support modern technologies, often lacking the necessary infrastructure such as wiring or space to accommodate smart systems. Retrofitting electrical wiring, upgrading HVAC systems, and integrating sensors into walls or ceilings can be complicated and costly.

Another challenge is the high initial costs associated with retrofitting. The process of installing smart automation systems in buildings with outdated infrastructure can involve significant upfront expenses, including extensive renovations.

Integration with existing systems in older buildings can also pose difficulties. Many buildings may have outdated systems that are incompatible with modern automation technologies. For example, existing heating, cooling, and electrical systems may need to be replaced to integrate seamlessly with smart solutions.

Smart Home World speaks to Professionals, System Integrators, and Lighting Designers to gain a comprehensive understanding of the scope and potential of incorporating automation and smart solutions into Existing buildings.



Ar. Aniruddha V. Nafrey, Principal Architect, Arriva Designs

What is the scope of Integrating Building Automation and Smart Technology in old Buildings to enhance Functionality, Preserving Heritage and Aesthetics and improve energy efficiency?

Integrating smart technology into older buildings is an exciting opportunity to merge heritage with modern functionality. At Arriva Designs, we see this as a way to honor the past while embracing the future. Smart technologies can dramatically enhance energy efficiency without compromising the aesthetics or character of a building. For instance, automated HVAC systems can adapt to varying occupancy levels, while IoT-enabled energy management systems can monitor and reduce energy consumption. These technologies, when thoughtfully implemented, respect the building's legacy while introducing conveniences like smart lighting that accentuate its design and reduce energy use.

What challenges have you faced in incorporating smart technologies into traditional designs? Please elaborate.

One major challenge is maintaining the integrity of historical elements. Many older structures were not designed for modern

electrical systems, so retrofitting requires meticulous planning. Structural constraints, such as load-bearing walls or intricate detailing, can complicate the installation of wiring or systems like automated shading. Additionally, striking a balance between functionality and aesthetics often involves customized solutions, which can increase costs and timelines. However, these challenges can be overcome with expertise and creative problem-solving, ensuring that the heritage remains intact while integrating modern advancements.

Which smart technologies do you consider most beneficial for enhancing the functionality of traditional buildings? For Example Smart Lighting Systems, IoT-based HVAC Systems, Automated Windows and Shading systems, Energy management systems and Security and Surveillance.

We find smart lighting systems and energy management tools to be the most impactful for traditional structures. Smart lighting can be tailored to highlight architectural features, offering both functionality and mood enhancement. IoT-based energy management systems allow us to optimize power usage while respecting the building's design limitations. Automated shading systems are also valuable, providing comfort and energy savings while complementing the structure's original aesthetics. These technologies ensure a seamless blend of old-world charm with modern efficiency.



Rahul Mistri, Founder, Open Atelier

What is the scope of Integrating Building Automation and Smart Technology in old Buildings to enhance Functionality, Preserving Heritage and Aesthetics and improve energy efficiency? Please elaborate.

Integrating building automation and smart technology in spaces, both old and modern, is a delicate task that designers grapple with every day. Smart tech is vital in how spaces are designed, constructed and even operated today. For us at Open Atelier Mumbai, it comes across as a fascinating challenge that requires

a balance between innovation and preservation when juxtaposing the old with the new. The older any space gets, the more complex it becomes to address the solutions needed for its smooth functioning while understanding the importance of reusing and celebrating heritage, maintaining aesthetics and efficiently planning the energy consumption.

At Open Atelier Mumbai, we believe that traditional structures come with rich histories and unique characters that deserve repurposing and require more than technical solutions. They call for a thoughtful approach that considers the integrity of the past while embracing the potential of reusing for a sustainable future. The new-age technology comes in handy here as it allows us to incorporate various smart systems while addressing the cultural influences of the built form, creating spaces that resonate meaningfully with both the environment and its user. From smart security systems to wireless solutions, we integrate automation in our designs to enhance the experience of these spaces. We believe these controls create dynamic spaces that adapt seamlessly to their occupants and surroundings.

For instance, our design concept for the office of TOAST Events Pvt Ltd., an all-in-one marketing firm, sought to repurpose the

heritage building of the Green Gift Bungalow in Bandra, Mumbai. The building exudes its colonial-era charm with its striking yellow facade, and the green sloping awning was the perfect choice. Therefore, the primary design challenge was creating a collaborative office space without altering the original structural elements. The vision was to inculcate modern functionalities within a record timeline of 25 days with minimal structural interventions. This helped us retain the space's original features while maintaining creativity and functionality.

The lighting system incorporated in TOAST became the perfect example of creating a seamless aesthetic without touching the intrinsic building structure. The lighting design combines a linear, clean approach, connecting various luminaries in exposed conduits. Combining these luminaries with natural lighting forms a holistic working environment for the user. The optimal use of natural light through existing openings and windows with the lighting system helped us build a collective ecosystem. These lights are strategically placed, considering the flow of natural light while serving as statement pieces. They accentuate the space's details and design motifs. As one moves through the office, the subtle sway of the suspended lights creates a captivating interplay of light and shadow, reducing glare while fostering a sense of fluidity and spatial unity.

Therefore, the inherent nature of new-age building automation and smart technology systems provides substantial scope for integration into heritage spaces.

What challenges have you faced in incorporating smart technologies into traditional designs? Please elaborate.

The primary challenges faced when trying to incorporate building automation and smart technology systems are the conventional mind blocks that individuals go through, from us as designers to the clients. Since the occupants are highly used to traditional conventional systems such as electrical keypads, it takes time to manage and understand the workings of their surroundings. Getting the right

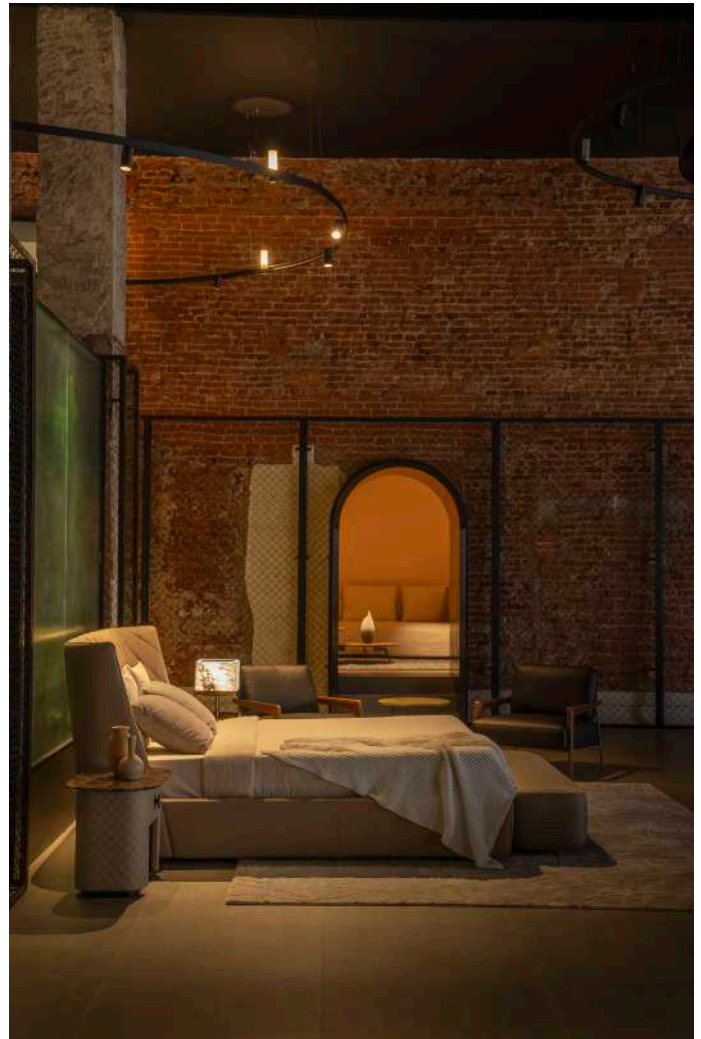


consultant and integrator on board becomes paramount here, as working with them makes the design more straightforward for its inhabitants. The designer, integrator, and consultant need to work in unison to smartly plan and, accordingly, design for a comfortable application in the foreseeable future because it is a significant paradigm shift in space functionality.

From a design perspective, it is essential to understand the function and aesthetic needed for the space a designer is reusing. For example, the design for Vita Moderna's office and experiential center primarily maintains the original structure intact and raw. The centre is located in the original industrial estate of Raghuvanshi Mills, Mumbai, and therefore, it became essential to maintain the intrinsic industrial rawness of the space. Only playing with the interior walls helps us create an immersive retail experience where the essence of global brands comes alive. Here, the bespoke lighting is an ode to using design and automation innovative tools to enhance user experience while facilitating collaboration.

The unique lighting system designed in collaboration with Delta Light, called the Superloop, a 5-meter-wide lighting ring, has been incorporated. The 14 Superloop lighting rings are strategically installed at various heights, with magnetic wireless rings and unique suspensions, allowing effortless adjustments according to the placement of furniture and products—adding to the contemporary look of the space without any intrusive interventions. It boasts a unique combination of spot, diffused, and aperture lighting, mindfully crafted to create an ambiance that highlights products while simultaneously setting the scene. This system seamlessly integrates with the Delta Lighting app, providing a comprehensive smart lighting experience without requiring third-party integrations.

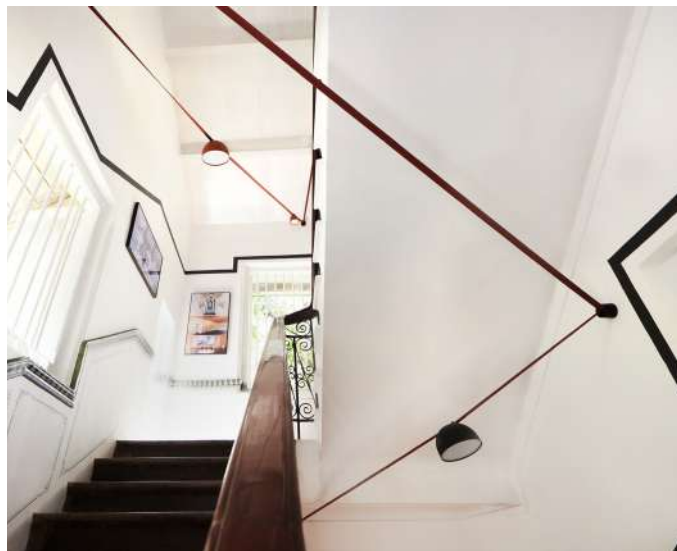
Which smart technologies do you consider most beneficial for enhancing the functionality of traditional buildings? For Example, Smart Lighting Systems, IoT-based HVAC Systems, Automated Windows and Shading systems, Energy management systems and Security and Surveillance.



more simple aesthetic but also help address eco-consciousness while enhancing user experiences. At the same time, evaluating the need for the client's functionality and usability in traditional buildings is essential.

Employing automated windows or shading systems can help maintain overall energy efficiency, optimize natural light, enhance comfort, preserve aesthetics, and offer convenient climate control while reducing operational costs and environmental impact. Incorporating smart lighting systems, IOT-based HVAC systems, and energy management systems can profoundly impact the overall usage patterns, maintaining the building's heritage character while offering modern functionality and an enhanced user experience.

The integration of these smart technologies sets a new standard in design excellence and has a widespread impact on how we inhabit and experience a space.



At Open Atelier Mumbai, since we focus on blending automation, materials, and aesthetics, we try to incorporate cohesive automation systems, from IOT-driven HVAC systems to bright lighting and security. Our central aim is to ensure that by adding these systems, we not only give the space a cleaner,



Devika Khosla, Creative Director, The Works Interiors

What is the scope of Integrating Building Automation and Smart Technology in old Buildings to enhance Functionality, Preserving Heritage and Aesthetics and improve energy efficiency?

In a world where environmental concerns are becoming increasingly urgent, what to build—or build at all—requires careful consideration. While new constructions have benefits, adapting and reusing existing spaces, enhanced with modern facilities, is a powerful solution for reducing our carbon footprint. This approach also offers a valuable opportunity to preserve the culture and tangible heritage.

Integrating smart technology into older buildings revitalises them without sacrificing their character. Smart systems enhance functionality while maintaining their historical essence. For instance, in some of our projects, we've implemented smart lighting that adapts to the natural lighting of a space and promotes energy efficiency while preserving the aesthetics.

IoT-based HVAC systems improve comfort without the bulkiness of traditional units detracting from the appearance, and energy management systems are transformative for sustainability, making these beautiful older

structures more efficient. It aligns perfectly with our philosophy at The Works Interiors.

What challenges have you faced in incorporating smart technologies into traditional designs? Please elaborate.

Incorporating smart technology into traditional designs comes with a set of challenges. One of the most significant is ensuring that the technology enhances rather than overpowers the traditional aesthetics, which requires striking a delicate balance. Older buildings often present structural limitations, making it impossible to install systems just anywhere. It necessitates creative solutions, such as concealing cables and integrating modern elements naturally and unobtrusively.

Another key challenge lies in managing client expectations—there's often a concern that introducing smart technology might compromise the charm and authenticity of the space. To address this, we engage in detailed discussions and collaborative planning, ensuring that every addition feels seamless and respectful of the original design while meeting modern functionality requirements.

Which smart technologies do you consider most beneficial for enhancing the functionality of traditional buildings? For Example Smart Lighting Systems, IoT-based HVAC Systems, Automated Windows and Shading systems, Energy management systems and Security and Surveillance.

There are a few standouts for me. Smart lighting is invaluable because it can transform the mood of a space without altering its appearance. IoT-based HVAC systems are another game-changer—they ensure comfort without the bulky, noisy units we're used to seeing. Automated windows and shading systems are also excellent; they aid in temperature control and natural lighting, which is crucial for preserving the building's original materials. And, of course, energy management systems are essential for making these old buildings more eco-friendly.

We focus on incorporating technologies that subtly enhance the space without detracting from its original charm.



Ar. Kapil Surlakar, Director of Design, LIGHT@WORK Design Consultants Pvt. Ltd.

What are the advantages of using smart lighting systems in old traditional buildings?

Smart Lighting systems come with smart power and control protocols which can help to reduce the cable lengths to be drawn in buildings that are old or of heritage value, minimising the physical damage to the structure. The use of Bluetooth, RF, Zigbee and other such wireless communication protocols definitely allows for such an advantage.

What are the biggest challenges when

integrating smart lighting systems in historic or old buildings?

Historic and old buildings are designed in response to the technologies and building techniques contemporary to the time of their construction. The language of Architecture and methods of construction do not account for the new technologies that might be beneficial but need physical intervention and space. The challenge is to provide a solution that is adaptable, without altering greatly the language of Architecture and can be executed without much damage to the structure.

Which smart lighting technologies do you consider essential for the energy efficiency of the building?

Lighting that interfaces with sensors, such as daylight sensors, occupancy sensors, etc. that help to control the use of artificial light are essential for the efficient use of energy resources. This is especially so in public buildings. Luminaires with well-designed optics that deliver the lumens as desired without light trespass are equally important. Smart electronics, such as LED drivers and SMPS that interface with BMS and help to monitor power fluctuations and luminaire failures through feedback mechanisms also help to monitor and deliver efficient lighting.



Pathik Joshi and Abhilasha Joshi, Founders, Kypad Designs

What is the scope of Integrating Building Automation and Smart Technology in old Buildings to enhance Functionality, Preserving Heritage and Aesthetics and improve energy efficiency?

At Kypad Design, we view smart technology as a bridge between preserving heritage and enhancing utility. By integrating systems like automated windows or IoT-based energy management, we can retain the soul of an old building while optimizing its performance. Building automation allows us to reduce energy consumption significantly and create spaces that are both sustainable and user-friendly. The real magic lies in blending these advancements subtly so that they harmonize with the building's timeless beauty, creating a seamless integration of tradition and innovation.

What challenges have you faced in incorporating smart technologies into traditional designs? Please elaborate.

The biggest challenge is ensuring that new technology integrates invisibly into the design. Many older buildings have unique materials or layouts that complicate installations. For instance, retrofitting wiring for automated systems often requires a level of precision to avoid disrupting heritage elements like ornate woodwork or vintage plaster. Another hurdle



is the potential mismatch between old and new — not just visually but also structurally.

Which smart technologies do you consider most beneficial for enhancing the functionality of traditional buildings? For example Smart Lighting Systems, IoT based HVAC Systems, Automated Windows and Shading systems, Energy Management Systems and Security and Surveillance.

For traditional buildings, technologies like IoT-based HVAC systems and automated windows are game-changers. HVAC systems ensure energy efficiency while maintaining thermal comfort, which is especially critical for preserving delicate materials in heritage spaces. Automated windows and shading systems enhance natural ventilation and light control, creating an environment that feels organic while minimizing energy usage. Additionally, security and surveillance systems can be discreetly integrated, offering modern protection without detracting from the building's charm. These solutions elevate the functionality of traditional spaces while preserving their intrinsic character.



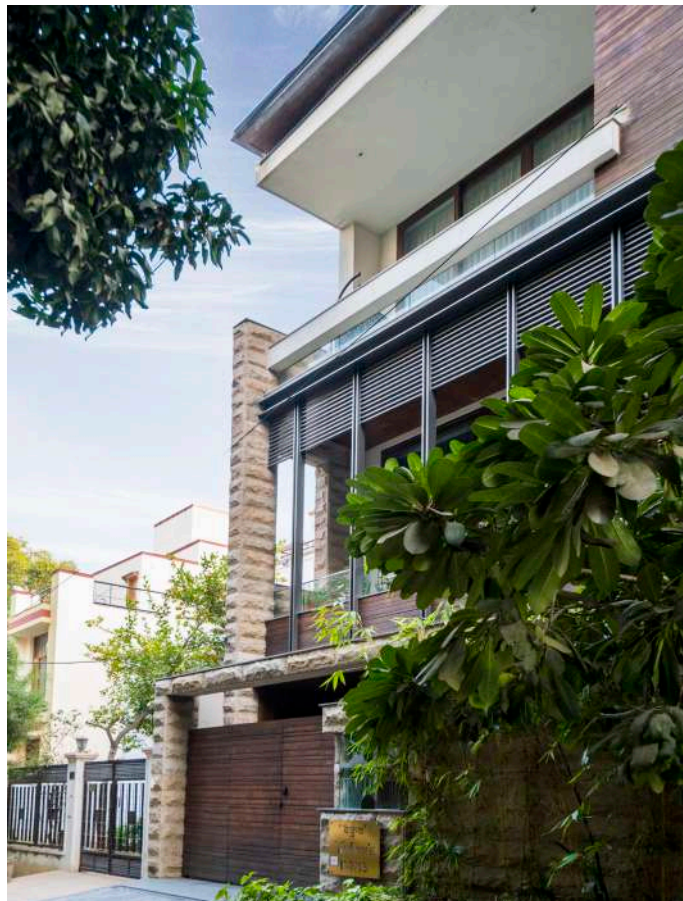
Gagandeep Kapila, Founders and Principal Architects, WMA

What is the scope of Integrating Building Automation and Smart Technology in old Buildings to enhance Functionality, Preserving Heritage and Aesthetics and improve energy efficiency?

At WMA Studio, we view heritage buildings as living histories that can embrace modern technology without losing their identity. Instead of retrofitting for the sake of automation, we adopt a curated approach—using smart systems that enhance day-to-day functionality while honoring the building's original charm. For example, subtle solutions like automated shading systems can regulate indoor temperatures and protect intricate details from wear and tear, while renewable energy solutions, such as solar-integrated roofs, bring old structures into the future sustainably. Every intervention is informed by respect for the building's story, ensuring its legacy continues in a modern context.

What challenges have you faced in incorporating smart technologies into traditional designs? Please elaborate.

Incorporating smart technologies into traditional buildings presents unique challenges, including structural limitations, preservation regulations, and aesthetic considerations. At WMA Studio, we have encountered situations where modern



wiring for automated systems needed to be installed without disturbing ornate interiors. Our solution involves meticulous planning and the use of wireless technologies to minimize physical alterations, ensuring that the building's character remains intact while upgrading its functionality.

Which smart technologies do you consider most beneficial for enhancing the functionality of traditional buildings? For Example Smart Lighting Systems, IoT-based HVAC Systems, Automated Windows and Shading systems, Energy management systems and Security and Surveillance.

We find that smart lighting systems and energy management solutions offer significant benefits for traditional structures. Adaptive lighting enhances the ambiance and highlights architectural features, while energy management systems monitor and optimize energy consumption, promoting sustainability. Additionally, automated shading systems can protect delicate interiors from sunlight damage. Our focus is on selecting technologies that enhance the building's usability and efficiency without detracting from its historical and aesthetic value.



Shridhar Pandav, Partner, VAAHAA Tech LLP

What challenges do you face when integrating automation/smart technologies into traditional architectural structures? Elaborate in detail.

We are a home automation hardware company. I have firsthand experience in elevating the lifestyles of our trusted clients by integrating automation/smart technologies in their new homes. After having years of experience in integrating home automation systems, “Can you imagine going back to traditional electric architecture” the answer would be No. We have been saying blunt NO to integrating automation and smart technologies for retrofitting existing homes or traditional architectural structures. We believe that automation/smart technologies are not in synergy with architectural structures. The closest analogy I can give is going to five star hotel and getting exotic dishes served in traditional utensils. Just imagine going to Five Star and ordering sushi and getting it served in a stainless steel plate a tradition in Indian homes. Or going to the office in a traditional dhoti kurta in Mercedes Maybach S class.

It's a battle we should gracefully surrender to instead of trying to fight and even pretend to have won it. Instead choose your battlefield if you can, by choosing to modernize the

structure. Then it would be appropriate to integrate automation/smart technologies.

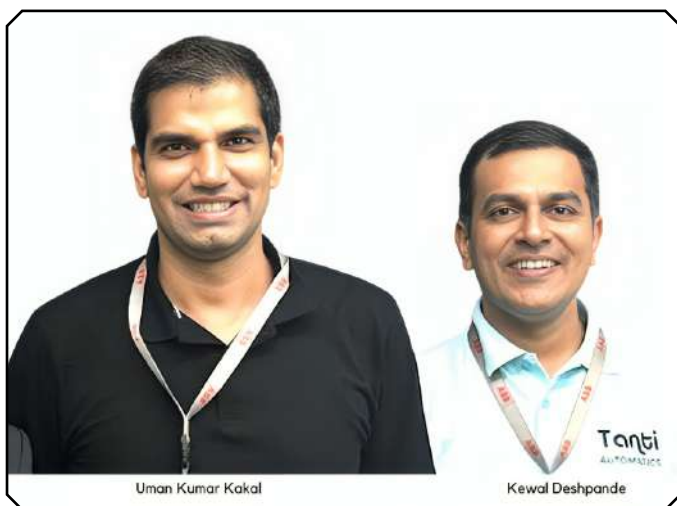
This is an objective opinion with no racism intended. There are too many degrees of freedom, that automation/smart technologies have to offer, which is too much for a traditional decor. e.g. Traditional architecture seldom goes beyond traditional switches and bulky fan regulators and the wiring is also done using wires carrying 230V AC power. Plus, the wiring is seldom concealed to be conducive to automation/smart technologies contradicting with traditional décor. The absence of false ceiling also causes adaption of modern COB lights with LED driver which in false ceiling can be easily tucked away.

What are the advantages of integrating automation and smart technology for old buildings?

I don't see any pressing advantage to integrating automation and smart technology for old buildings as automation and smart technology is not a building block but the modern theme itself. Without even the context of this very topic, modern and traditional are almost antonyms. As discussed above, unless the very theme of the building is to be facelifted, it doesn't make sense to me to opt for integration of automation and smart technology in isolation.

What emerging technologies or innovations are you excited about that could enhance the integration of smart systems in traditional buildings?

The only innovation I can consider relevant for traditional buildings with On/Off type of switches (as opposed to mainstream de-facto dimmable tuneable lights) is to replace them with On/Off type of home automation. Sensors such as motion sensors, and presence sensors can be added as bells and whistles, however, the core essence of integration of emerging technologies cannot be exploited to its full extent. In this way, the network of electric wires laid can still be used to enhance the traditional building while avoiding radical changes that soon can avalanche into the need for a complete overhaul.



Kewal Deshpande, MD, Tanti Automatics Pvt. Ltd. and UmanKumar Kakal, MD, Tanti Automatics Pvt. Ltd.

What challenges do you face when integrating automation/smart technologies into traditional architectural structures? Elaborate in detail.

The integration of automation and smart

solutions into existing buildings has become a game-changer in enhancing functionality, efficiency, and sustainability amidst rapid technological advancements. As a leading name in system integration, Tanti Organisation has been at the forefront of implementing and commissioning state-of-the-art technologies, transforming old structures into modern, efficient spaces.

Why Upgrade an Old Buildings to a Smart Buildings?

Turning an old building into a smart building is not just a trend, but a step towards enhancing your living experience, improving energy efficiency, and future-proofing your property. The convenience offered by technologies is one of the key reasons for its growing popularity. With mobile apps and voice-activated assistants, managing your space becomes effortless. You can control lighting, temperature, and even appliances from anywhere in the world. Whether you're relaxing on the couch or on vacation, a simple tap on



your phone or a voice command can create the perfect ambiance, turn off forgotten lights, or preheat your oven. Over time, these systems learn your preferences, offering personalized suggestions and automating repetitive tasks to make daily life simpler.

Energy savings is another significant benefit. Smart thermostats optimize heating and cooling by learning your routines, and reducing unnecessary energy consumption. Motion-sensor lighting ensures that lights are only on when needed, and solar energy systems provide clean, renewable power, helping to lower utility bills while reducing your carbon footprint. Smart space also offer advanced security features, including smart cameras for real-time monitoring, remotely controlled door locks, and intrusion detection

systems that send instant alerts to your phone. These systems provide comprehensive safety whether you're at home or away.

Additionally, retrofitting your home with smart technologies can significantly boost its property value. In today's real estate market, homes with energy-efficient appliances, automated lighting, and smart security systems are highly attractive to buyers and tenants, commanding higher resale or rental prices. Lastly, the sustainability factor plays a crucial role. Automated systems minimize energy waste by ensuring that appliances and systems run only when necessary. Features like smart irrigation conserve water, while eco-friendly technologies such as solar panels and energy-efficient devices contribute to a greener environment.

In this article, experts from various sectors discussed the advantages of retrofitting old buildings with smart automation, emphasizing benefits like enhanced energy efficiency, security, and increased property value. However, challenges such as structural limitations and high upfront costs are also highlighted. While many iconic buildings have successfully adopted smart solutions, some experts express caution. Ultimately, we leave it to our professional readers to carefully evaluate these factors and make an informed decision.

“ELKO EP Combines Affordability with Premium Features, Ensuring Seamless Integration and Future-Proofing Smart Home Solutions for Indian Consumers.”



Jiri Konecny

Chairman, Elko Ep Holding Czech Republic. EU

Jiri Konecny, Chairman of ELKO EP, discussed the brand's rapid evolution in India since 2017, expanding from electrical components to smart home solutions. With products like the iNELS Wireless range and Guest Room Management System, ELKO EP is addressing the growing demand for innovative, energy-efficient automation. The company plans to expand through local manufacturing, AI integration, and a focus on sustainability, aiming to become a market leader in India's smart home sector.

Can you provide a brief overview of ELKO EP's journey in India and how it has evolved, particularly in the smart product/technology segment?

ELKO EP entered the Indian market in 2017 with a focus on offering innovative electrical components. Over the years, we've expanded into the smart technology segment, leveraging our global expertise to introduce advanced home automation solutions tailored for Indian consumers. After a few years of lull and downplay due to Covid-19 we have bounced back. The recent progress can be attributed to the reinvigoration of our team resulting in steady growth, strong distributor partnerships,

and a commitment to quality and innovation. We take pride in citing references from the Defence Industry in India trusting us for impeccable Relays range of products especially made for mission-critical defence applications. Proven and tested its robustness world over in the Defence sector. The same benefits are characterised in our Smart Home, Office, Infrastructure Smart Automation products as well.

Could you share an overview of ELKO EP's current product offerings in the smart home segment available in India?

In India, ELKO EP offers a wide range of



solution designed specifically for residential automation. It offers advantages like ease of installation, energy efficiency, and the ability to retrofit existing setups without the need for extensive wiring. This makes it ideal for Indian homes, where minimal disruption is often a priority.

What is the range of relays and sensors that ELKO EP offers, and how do these products contribute to smart home solutions?

smart home solutions, including wireless automation systems, lighting controls, smart thermostats, and advanced security solutions. Our iNELS product line has been particularly well-received for its flexibility and user-friendly interface.

We take immense pride in our Guest Room Management System (GRMS), a solution trusted by countless hotels worldwide, particularly within the European Union.

Tell us more about the iNELS RF range and the advantages it provides, particularly in apartment setups.

The iNELS Wireless range is a wireless

ELKO EP provides a comprehensive range of relays and sensors, including motion sensors, temperature sensors, and multifunctional relays. These products enable seamless integration into smart home ecosystems, ensuring greater energy efficiency, security, and comfort.

With the addition of the Inspinia offering to our existing portfolio, we are entering the highly competitive touchscreen switches and button segment. The Inspinia product line, well-established in European markets, delivers exceptional quality combined with outstanding value, making it an ideal choice for consumers seeking premium features at competitive pricing.

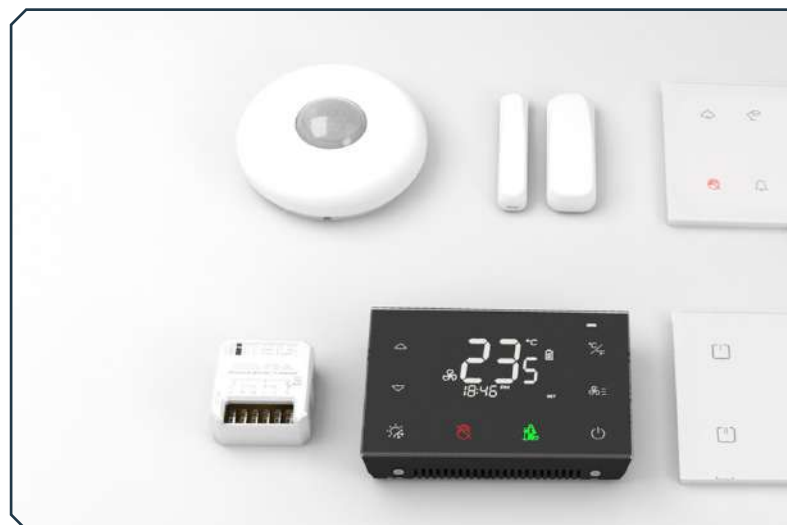


How can ELKO EP's product range provide a competitive advantage in meeting the specific needs and preferences of Indian consumers in smart home and office solutions?

Our product range addresses the specific needs of Indian consumers by combining affordability with premium features. For instance, the modular design of our solutions makes them scalable for both small apartments and large offices. Furthermore, our compatibility with the Matter standard ensures seamless integration with other smart home ecosystems, offering users greater flexibility and future-proofing their investments. Additionally, our focus on after-sales support has helped us build trust in the market.

Given the rapidly evolving smart home industry in India, how does ELKO EP plan to expand its presence and capitalize on this growth?

We plan to expand our presence in India by investing in local manufacturing facilities, increasing our distribution network, and launching region-specific products. Our focus



will be on tier-2 and tier-3 cities, where the demand for smart home solutions is rapidly growing as India is poised to be a global leader economically and technologically.

Are there any plans for partnerships or collaborations with local distributors? If so, could you elaborate on these initiatives and how they will help strengthen ELKO EP's position in India?

Yes, we are actively pursuing partnerships with local distributors and system integrators. These



collaborations aim to enhance our market reach and provide end-to-end solutions for consumers. We are also exploring partnerships with real estate developers to integrate our solutions into new housing projects.

From your perspective, how is the smart home industry evolving in India?

The Indian smart home industry is evolving rapidly, driven by growing internet penetration and consumer awareness. Key trends include voice-controlled devices, energy management

solutions, and increased adoption of IoT. ELKO EP is aligning with these trends by developing AI-enabled products and ensuring compatibility with popular smart home ecosystems.

What are your long-term goals for ELKO EP in the smart home and office market in India, and how do you plan to achieve them?

Our long-term goal is to become a leader in the Indian smart home and office automation market. We aim to achieve this by continuously innovating, expanding our local footprint, and strengthening our customer relationships. By 2030, we envision being the go-to brand for smart living solutions in India.

If there is any other aspect of your product range or strategy that we have missed, please feel free to share it with us.

Our strategy is our commitment to sustainability. All our products are designed with energy efficiency in mind, and we are exploring newer materials and solutions. Our upcoming product line will include advanced AI and machine learning capabilities for enhanced user experience.

The Future of Smart Lighting is Defined By The Convergence of IoT And AI, Ushering in Intelligent and Adaptive Systems



Trisha Bhardwaj, Chief Curator at Blink Box Studio Pvt Ltd, shares her insights on the studio's expertise in crafting innovative lighting solutions and her views on the evolving world of smart lighting. At Blink Box Studio, lighting goes beyond mere illumination—it's a means of self-expression that transforms spaces. By collaborating with creative visionaries, the studio pushes design boundaries from concept to installation, offering unique, story-driven lighting solutions. Committed to sustainability, Blink Box Studio blends materials and light while minimizing waste and maximizing energy efficiency.

(From Left to Right) Trisha Bhardwaj, Dr. Yogita Shetty, Riddhi Hublikar (Sitting Left to Right) Pooja Kapadia and Arti Bhardwaj

Can you take our readers through your journey so far?

With over two decades of experience in the lighting industry, spanning more than 2,000 projects in various roles including sales, marketing, product development, education, and wellbeing, this journey has been both enriching and transformative. Having worked with renowned brands like Philips, Regent, Genlyte (Philips-owned in the USA), and SIMES from Italy, the expertise gained has been vast and varied.

Now leading a group of diversified companies, the focus ranges from selling premium European brand lights to owning a 'Make in India' manufacturing setup in Mumbai, where the innovative concept of "Be Your Own Lighting Chef" allows clients to choose from 21 different materials. This initiative blends creativity with customization. Additionally, the commitment to health and wellbeing is

evident through offering Photo Bio Modulation Therapy for treating conditions like migraines, insomnia and muscular atrophies.

The journey from a salesperson to becoming an IWBI Faculty, Advisory Board member, Circular Economy expert, patent holder, author, educationist, and entrepreneur has been both beautiful and challenging, contributing to an authentic blend of technical knowledge and commercial acumen.

Could you highlight some landmark projects that have been turning points in your career, particularly in experimenting with new lighting techniques or introducing innovative concepts?

At Pangea3, Infosys - Pune, BOA, CNBC, and D P Analytics, our projects are crafted to explore the dynamic fusion of art and technology. By blending creative vision with advanced lighting techniques, we push the boundaries of what's



possible, transforming spaces with installations that do more than just illuminate—they tell stories and evoke powerful emotions. Each project is a unique experiment, where we strive to redefine lighting design, delivering solutions that are both functional and deeply inspiring.

What do you consider the biggest innovation in the lighting sector, and how has it revolutionized the industry?

For nearly 200 years, artificial light was a luxury experienced by only a select few populations. It's been around 100 years since people in urban, suburban, and some rural areas began to experience artificial lighting. Over this century, lighting technology has evolved dramatically, transitioning from incandescent lamps to IRC, mercury vapor, metal halide, and now, LEDs. Among the most significant innovations have been the incandescent lamp, followed by fluorescent lamps, metal halides,

and today, the cutting-edge LED technology.

As a Lighting Designer, which lighting control brands do you prefer?

Lutron, Casambi and Crestron

What are your views on the smart lighting industry? In your opinion, in which sector (hospitality, commercial, residential) is traditional lighting being rapidly replaced by smart lighting?

In interior design, decorative lighting transcends simple illumination. The psychology behind it is a captivating field that reveals how lighting can influence our emotions, behaviors, and overall well-being. To achieve the desired effects, both physiological and psychological, it's crucial to use lighting controls effectively. This ensures that the aesthetic and lighting design can profoundly impact our mental and emotional states. Additionally, the smart



application of lighting systems not only enhances the benefits of a smart home but also supports the circular economy by utilizing fewer components compared to conventional lighting solutions.

How do you foresee the Smart Lighting Industry evolving over the next five years in India?

Smart home start from the smart concept and the occupants... In the next five years, I expect the smart lighting industry in India to grow rapidly, fuelled by innovations in IoT and AI, along with a rising preference for energy-efficient solutions. As people become more conscious of sustainability and energy savings, smart lighting will play an important role in reducing energy consumption and making homes and businesses greener.

The future of lighting will likely feature smarter, more intuitive systems that adapt to user preferences, adjust automatically, and integrate effortlessly with other devices. With increasing government support for energy efficiency and smart infrastructure, these technologies are set to become more affordable and widely available. In the near future, smart lighting could be a standard

feature in homes, offices, and public spaces, creating more connected and personalized environments.

Human Centric Lighting (HCL) is an emerging trend focused on health and mental wellness. What are your thoughts on this?

I always begin discussions on lighting with my tagline: "Light is the governor of the universe and the hormones; let's use it, not abuse it." It's time for people to start demanding healthy lighting rather than merely smart lighting. Unfortunately, the term "smart lighting" is often misused, deviating from its true potential. While there is a wealth of research, blogs, case studies, and solutions examining the physiological and psychological impacts of light, these insights are rarely applied by architects, interior designers, end users, and even the lighting industry—except for a few pioneers.

The relationship between physiology and light is fascinating and undeniable. It's an area that can't be ignored or criticized without understanding its profound effects. I'm committed to educating others on this, backed by my own research, blogs, books, videos, and presentations. However, the notion that a single

“explicit technique” for human-bio favorable lighting can universally apply to everyone is unrealistic, due to the vast differences in age, genetics, environment, individual physiology, habits, and behavioral patterns.

That said, there are ways to use visible and non-visible light waves appropriately to balance homeostasis. Unfortunately, light is often taken for granted, and instead of using it wisely, we end up abusing it.

Can you share your perspective on the user experience with IoT and AI automation systems in relation to the future of Smart Lighting?

There is a mix of experience as it varies from person to person, system to system and type of lighting and the spaces. The future of smart lighting is being shaped by the convergence of IoT and AI, creating a new era of intelligent and adaptive lighting systems. With IoT connectivity, smart lights can now communicate seamlessly with other devices, enabling a cohesive and integrated environment. AI further elevates this experience by understanding behaviours, predicting needs, and optimizing energy use in real time.



This integration transforms smart lighting from a basic utility into an intuitive, user-focused experience. It not only offers greater convenience and energy efficiency but also enhances well-being by adapting to users' natural rhythms and preferences. Looking ahead, smart lighting will play a key role in shaping connected homes and workplaces, providing personalised lighting scenarios that respond dynamically to both user actions and external conditions.

What are your views on the LED revolution and lighting control? What are the latest trends in lighting systems and controls?

The LED revolution has transformed the lighting landscape in just the past 15 years, driving significant business growth and expanding our capabilities in lighting usage. However, despite these advancements, there remains a lack of awareness regarding the potential adverse effects of LED lights. The improper use and lack of understanding of key parameters have raised concerns about their impact on both physiological and psychological health.

Lighting control has become essential to meet the dynamic expectations of end users. It offers ease of control, simplifies assessment, and reduces the reliance on traditional switch-

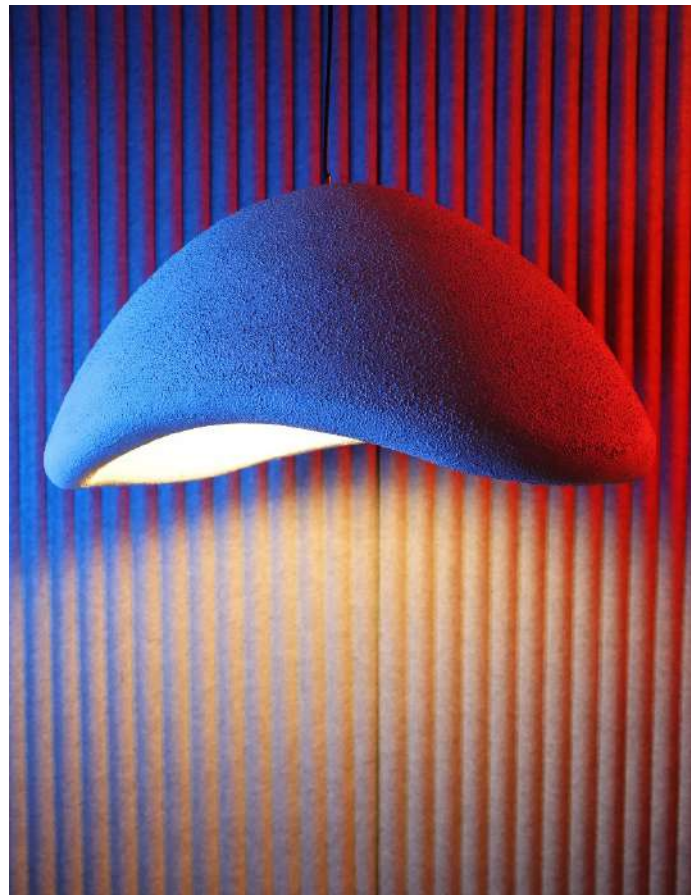


based systems, helping to minimize waste and the environmental impact of landfill-bound components.

How important is collaboration with a System Integrator during a lighting project?

As a lighting manufacturer and enthusiast, collaborating with a system integrator is essential for the success of any lighting project. System Integrators offer a comprehensive approach, ensuring that lighting, automation, and building systems work harmoniously together. This collaboration guarantees seamless integration with other systems such as HVAC, security, and smart controls, enhancing the overall user experience, improving energy efficiency, and meeting both technical and aesthetic goals.

By partnering with a System Integrator, I can ensure that our lighting solutions perform optimally within the larger system, fully addressing client needs while providing long-term value. Their expertise in integrating diverse technologies allows us to identify



potential challenges early, ensuring a smoother installation process and a successful project outcome.

What is your future vision for your company?

At Blink Box Studio, our vision is to lead the global lighting industry with a truly bespoke experience, centered around the innovative concept of “Be Your Own Lighting Chef.” We aim to empower our clients to design personalized lighting solutions that combine creativity with functional excellence. Our mission is to create installations that not only enhance the aesthetic appeal of any space but also push design boundaries by seamlessly integrating a variety of materials, forms, and textures.

Looking ahead, we are committed to exploring new horizons in lighting design, constantly experimenting with cutting-edge technologies, sustainable materials, and artisanal craftsmanship. Our goal is to produce installations that are visually captivating while resonating deeply with the emotional and experiential needs of the environments they occupy. We strive to elevate the lighting industry by blending artistry with functionality, delivering solutions that cater to both individual preferences and environmental sustainability.



“Voice-Activated Systems and Remote Management are Set to Rise in Popularity, Offering Intuitive Control of Smart Devices from Anywhere.”



Siddharth Vasudevan Moorthy

Managing Director, Vascon Engineers

Siddharth Vasudevan Moorthy, Managing Director, Vascon Engineers Ltd., shares his perspective on how building automation has evolved from a luxury to a necessity in real estate. He shares how building automation enhances security through features like smart locks, video surveillance, and remote monitoring. Siddharth also emphasizes the role of personalization, allowing homeowners and businesses to customize their environments with ease. He believes these innovations will play an integral role in creating smarter, more sustainable, and secure living and working space.

With your extensive experience in the real estate industry, how have you seen the role of building automation evolve over the years?

The role of building automation has evolved significantly over the years, shifting from a niche luxury to a mainstream necessity in real estate. Initially, it was seen as an add-on feature, limited to high-end properties, offering basic conveniences like centralised air conditioning or remote-controlled lighting. Today, it has become a cornerstone of modern living, driven by advancements in technology and changing consumer expectations.

One of the most notable shifts is the focus on sustainability and energy efficiency. Automated systems now optimize energy

use in real-time, adjusting lighting and HVAC based on occupancy or natural light, reducing consumption, operational costs, and carbon footprints. Security has become another key aspect, with smart locks, video doorbells, and app-based visitor management enhancing safety and providing homeowners with control, even remotely.

Additionally, the rise of personalized living experiences allows homeowners to adjust lighting, temperature, and entertainment through apps or voice commands, offering convenience and customization. Building automation has shifted from a luxury to an essential feature in real estate, redefining property marketing and user experiences. As technology advances, its role in enhancing



convenience, security, and sustainability will continue to shape the future of modern living spaces.

What key factors are driving the increasing demand for Automation and Smart technology in commercial properties today?

The increasing demand for automation and smart technology in commercial properties is driven by the need for efficiency, sustainability, and adaptability to modern business needs. Technological advancements like Artificial Intelligence (AI), Internet of Things (IoT), and robotics enable real-time monitoring and automation of building operations, improving energy management, security, and maintenance. These systems streamline processes and reduce reliance on manual intervention.

Sustainability has become a top priority, with smart technologies supporting energy efficiency through automated lighting, HVAC systems, and resource optimization. These solutions not only lower operational costs but

also help businesses achieve green building certifications and meet environmental goals.

Cost savings are another key factor, with predictive maintenance reducing downtime and repair expenses. Automated systems enhance operational efficiency, making properties more attractive to occupiers. Security and safety have also improved, with features like access control, surveillance systems, and emergency alerts ensuring a safer environment for employees and assets.

How do you incorporate smart lighting and control systems into your projects? What benefits have you observed? Can you share the names of brands you have used in your projects?

We first incorporated smart lighting and control systems into our projects way back in 2010 to enhance residents' living experiences. Now it's a way of living and many features are given in most of our projects.

In our project Vascon Windermere, we



integrated smart lighting solutions from **Honeywell** back in 2010 to meet modern consumer demands. These systems feature automated dimming, motion sensing, and customizable settings that adjust lighting based on occupancy or time of day, remote-operated curtains, etc. This not only improves energy efficiency but also provides residents with personalized control through remote devices. We have also used Home Automation brands like Toyomo and Honeywell and Switches from Schneider

Today we have home automation in almost all the projects that we are offering. Vascon Forest Edge (Pune's first Health-Tech Homes), Vascon Goodlife (Value Homes) to name a few.

What trends do you foresee in the use of building automation and smart technology in the next five years?

In the next five years, building automation and smart technology are expected to redefine living and working spaces, driven by advancements in IoT, AI, and sustainability priorities. Homes and commercial spaces are anticipated to feature interconnected devices, with AI-powered systems predicting user behavior, automating routines, and enhancing convenience. Energy-efficient technologies such as smart HVAC systems, automated lighting, and energy monitoring solutions are expected to focus on reducing consumption, aligning with the growing emphasis on sustainability and green building certifications.

Enhanced security features, including biometric access, AI-based surveillance, and remote



monitoring, are likely to become standard, offering greater safety and peace of mind. Personalization is set to take center stage, with smart systems enabling users to tailor lighting, temperature, and entertainment settings to individual preferences. Additionally, voice-activated systems and remote management are expected to gain popularity, providing intuitive control of smart devices from anywhere. These trends are anticipated to make spaces more efficient, sustainable, and user-centric, meeting the evolving demands

for comfort, convenience, and security in modern living and working environments.

Can you share a specific project where automation and smart technologies significantly improved the overall performance and sustainability?

A notable example of our project leveraging automation and smart technologies is Forest Edge, which integrates advanced solutions to enhance performance and sustainability. Key features include mobile automation controls for air conditioning, fans, and lights, allowing residents to optimize energy usage conveniently.

The project incorporates electric car charging points, promoting eco-friendly transportation options, and a Wi-Fi-enabled complex for seamless connectivity. Security is prioritized with CCTV-equipped crèche facilities, ensuring peace of mind for families. Additionally, the Business Bay is equipped with video conferencing facilities. These smart technologies collectively improve energy



efficiency, reduce the environmental footprint, and create a comfortable, secure, and future-ready living environment.

How does Vascon prioritize sustainability when designing and implementing automation systems?

Vascon prioritizes a holistic approach that maximizes benefits for owners and end users while minimizing environmental impact. Our designs emphasize resource conservation, incorporating systems for recycling and reuse, and utilizing locally sourced eco-friendly materials to reduce the carbon footprint. Energy efficiency is a key focus, with smart automation systems like HVAC, lighting, and renewable energy integrations ensuring reduced consumption. By embedding these

sustainable practices, we create future-ready spaces that balance environmental responsibility with long-term value for occupants.

Lastly, what are your personal goals for integrating smart solutions into your future projects?

Technology is significantly impacting the construction industry, with new products entering the market almost daily. Therefore, it is crucial to carefully analyse these products to ensure their use improves efficiency and productivity, rather than adopting them merely for their novelty. The focus should be on products that deliver substantial benefits in terms of time, cost, and resource savings, ultimately adding value to the organization.

“At Zebronics, We Believe In Making Cutting-Edge Technology Accessible to All, Delivering Premium Audio Experiences Without the Premium Price Tag.”



Rajesh Doshi

Co-Founder and Director, Zebronics

Rajesh Doshi, Co-Founder and Director, Zebronics, is a leading brand in the Indian consumer electronics and IT peripherals industry. With over 27 years of experience, Rajesh has played a pivotal role in shaping Zebronics' journey from a regional player to a nationally recognized name. Under his guidance, Zebronics has not only pioneered advanced technologies like Dolby Atmos in its soundbars and DJ speakers but has also embraced the 'Make in India' initiative, bolstering local manufacturing and contributing to the growth of the Indian electronics ecosystem. In Conversation with Smart Home World, Rajesh speaks about their latest brand offering.

Looking back over the past 27 years, what do you consider to be the key milestones in Zebronics' journey?

Zebronics' 27-year journey is marked by key milestones including pioneering the peripherals market, expanding into consumer electronics with a focus on audio and gaming, embracing digital transformation through e-commerce and strong after-sales service, and cultivating a customer-centric brand identity built on innovation. These factors have contributed to Zebronics' growth from a regional player to a nationally recognized brand.

The brand has seen significant growth in the speaker segment. What are some of the

innovative features and technologies you offer? Can you elaborate on your prominent range?

Zebronics has significantly expanded its footprint in the speaker segment with a diverse range boasting features like deep bass, crystal-clear audio, and immersive surround sound. Covering all requisites; our portable speakers come in handy for a personal experience to a more inclusive preference where our Soundbars and DJ speakers combined with the signatures of Dolby, give a surreal output. We've democratized the availability of Premium Audio to the masses that has enabled us to offer exceptional audio without breaking the bank.

Smart Wi-Fi Plug ZEB SP110



Zebronics offers a diverse range of soundbars. What are some of the key features that differentiate your soundbars from competitors, and how do they enhance the user experience?

Zebronics stands out in the competitive soundbar market by delivering premium audio experiences without the premium price tag. We believe everyone deserves to enjoy cutting-edge technology like Dolby Atmos, DTS-X and powerful subwoofers. Our soundbars are designed with simplicity in mind, offering easy setup and intuitive controls. Complementing your home's aesthetic, our sleek designs make our soundbars not just functional but stylish additions to any living space. In essence, what was formerly seen as 'luxury', Zebronics has bridged the gap by making exceptional home theatres, accessible to all, justifying its goal to provide "Premium for Masses" and merging affordability with advanced tech like Dolby, transforming any home into an extraordinary Home Theatre.

Your DJ speakers have a unique appeal. Can you elaborate on the technological advancements and design elements that make them stand out in the market?

Our DJ speakers are a testament to Zebronics'

commitment to innovation and customer satisfaction. They feature advanced audio technology, delivering powerful sound with crystal clear clarity. To enhance the party atmosphere, we've incorporated dynamic LED lighting effects that sync to the music's rhythm. Beyond the audio and visual spectacle, our DJ speakers are built with durability, long battery life, and multiple connectivity options in mind. This combination of superior technology, design, and functionality sets our products apart in the market.

In the smart home category, how does Zebronics integrate innovation into products like smart plugs and other home automation solutions? What benefits do these products offer to consumers in terms of convenience and energy efficiency?

Our smart plugs and home automation solutions are designed with simplicity and user-friendliness in mind. These products offer practical benefits like remote control, scheduling, and energy monitoring. By incorporating these features, we aim to help consumers streamline their daily routines and potentially reduce energy consumption.

With smart speakers becoming increasingly popular, what are some of the standout

features of Zebronics' smart speakers that cater to the evolving needs of tech-savvy consumers?

Delivering clear, rich audio, our devices are designed for immersive listening experiences. With built-in Alexa on our Smart Bot speaker, users can effortlessly control their smart home ecosystem with voice commands. Additionally, the Smart Bot's IR blaster empowers users to control various appliances like TVs and air conditioners, transforming it into a versatile home command centre.

The smart plug category is rapidly growing. Are there any new features or technologies being introduced in this segment?

We're seeing a growing emphasis on energy efficiency and user experience. New features like advanced energy monitoring, providing detailed insights into power consumption, are gaining traction. Additionally, there's a trend towards enhanced integration with other smart home devices, creating more holistic ecosystems. We can also expect to see improvements in terms of speed, reliability, and security as technology progresses.

Looking ahead, what are Zebronics' key strategic goals for the next five years? Are there any new product segments or markets you are particularly excited about?

Zebronics has rapidly expanded its product



portfolio, venturing into High-fidelity Soundbars and Smart LED TVs, complementing its existing strengths in Audio products and IT Peripherals. Committed to 'Make in India', the company has established a robust manufacturing setup that not only diminishes the reliance on foreign supplies, but boosting local employment and the economy in the process. Moreover, our enduring partnerships with multiple Electronics Contract Manufacturers (ECMs) support the 'Atma Nirbhar Bharat' vision. This commitment allows Zebronics to domestically produce a significant portion of our product lineup thereby anchoring our status as a dominant force in the Indian electronics industry, keeping us "Always Ahead".



Blending Rustic Charm with Smart Technology

Reloto Automation Solution Pvt. Ltd. seamlessly blends rustic charm with advanced smart technology in this farmhouse. The property showcases cutting-edge automation systems, eco-friendly living and a cosy, practical design that offers both comfort and security in a peaceful rural environment.

Ashok Reddy Bana, Technical Manager, Reloto Automation Solution Pvt. Ltd., a leading System Integrator based in Hyderabad, has brought together home automation and smart technology in this charming farmhouse to create a secure, user-friendly environment. Spanning 10,000 square feet, the home is thoughtfully divided into spacious living rooms, guest rooms, and leisure spaces. The farmhouse is built on 1.5 acres of land, featuring expansive outdoor areas, beautifully landscaped gardens, and recreational zones, offering a perfect balance of privacy and tranquility.

Concept and Decor

The design of this farmhouse seamlessly combines rustic charm with modern comfort, creating a serene and inviting atmosphere.

Natural materials such as exposed wood beams, stone accents, and reclaimed wood are used throughout the space, adding timeless appeal and infusing the home with authenticity and character. These elements serve as the foundation of the farmhouse's design, evoking a grounded sophistication and historical charm.

The aesthetic is further enhanced by a soothing colour palette of whites, warm earth tones and soft greys. These tones are complemented by vintage furniture and handmade pieces, contributing to a cosy, lived-in feel. Large windows and high ceilings flood the interiors with natural light, offering sweeping views of the surrounding landscape and creating a seamless connection to nature.

Modern conveniences are carefully integrated



with state-of-the-art appliances and sustainable features such as solar panels, rainwater harvesting systems, and eco-friendly insulation, ensuring a balance between luxury living and environmental responsibility. The design encourages a seamless flow between indoor and outdoor spaces, with patios, decks, and pergolas providing ideal areas for dining, relaxation, and entertainment. This connection between the home's interior and natural surroundings fosters a harmonious living experience.

The farmhouse is designed to blend comfort, style, and functionality. The living room is an expansive, open-plan space centered around a stone fireplace and large windows framing panoramic views. The farmhouse-style kitchen, complete with sleek appliances, is complemented by a rustic dining area that opens onto a patio. The master suite offers a peaceful retreat, with a private balcony, a spacious bedroom, and a luxurious en-suite

bathroom featuring a soaking tub and walk-in shower. The guest rooms, home office, and outdoor spaces complete the design, ensuring privacy, relaxation, and sustainable living in this retreat-like home.

Integration of Home Automation and Smart Technology

Explaining the purpose behind incorporating Smart Technology Ashok Reddy Bana, says, "The integration of smart home technology in this farmhouse design brings a new level of convenience, energy efficiency, and security while maintaining the rustic charm that defines rural living. By incorporating leading-edge devices and systems, homeowners can control and automate various aspects of their homes with ease, making their living spaces more comfortable, secure, and sustainable."

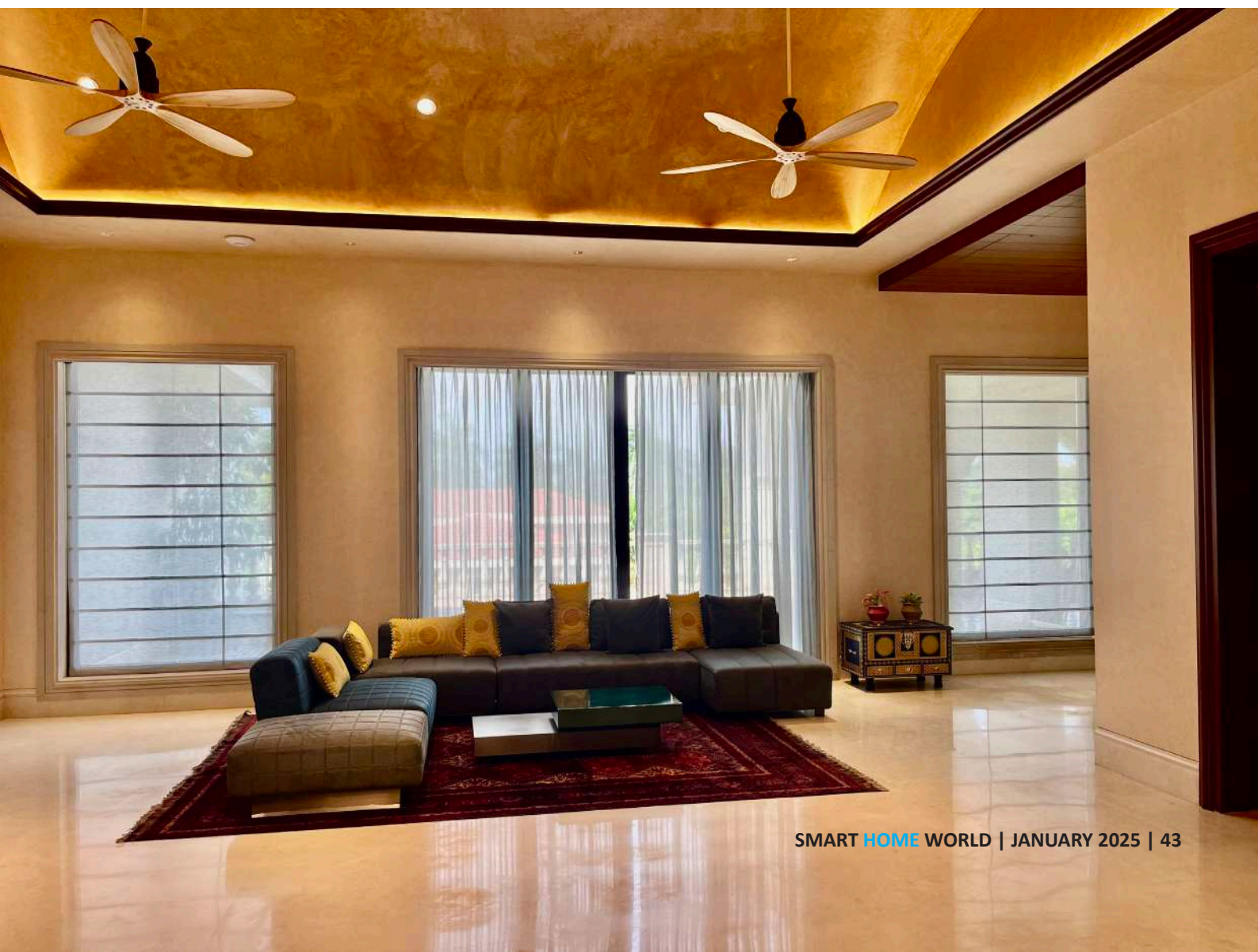
Smart Lighting Solutions: A standout feature in this Smart farmhouse design is the ability to control lighting through advanced systems

like **CONTROL4**. This platform enables customizable, dimmable LED lighting with colour-changing capabilities, which can be set to operate based on motion sensors or specific schedules. Homeowners can easily manage their lighting preferences via the **CONTROL4 app** or voice assistants such as Amazon Alexa and Google Assistant. Additionally, dimmable light switches and smart dimmers allow homeowners to control traditional lights in high-traffic areas like living rooms, kitchens, and hallways, all through app controls or voice commands.

Smart HVAC Systems: To ensure maximum energy efficiency, **COOLMASTER** learns homeowners' schedules and adjusts temperature settings accordingly, optimizing energy use while providing comfort. This system can be controlled remotely via the **CONTROL4 app** or by voice commands through **Amazon Alexa** or **Google Assistant**. Additionally, the system offers multi-zone

HVAC capabilities, with room sensors that ensure even temperature distribution across the farmhouse, seamlessly integrating with other smart home devices.

Smart Security and Surveillance: The **CP PLUS** security cameras offer top-tier protection with high-definition 2K video, colour night vision, motion detection, and two-way audio. These wireless cameras were easy-to-install and featured smart alerts that notified homeowners of any movement or unusual activity. The cameras provided crystal-clear video footage, ensuring every detail of the property was captured, which was particularly beneficial for monitoring large outdoor spaces like gardens, driveways, and entry points. With a weatherproof design, the cameras were well-suited for harsh outdoor conditions, making them perfect for rural settings. The footage was securely stored in the cloud, allowing homeowners to access it remotely, and providing peace of mind even when they were





not on-site. Additionally, the **CP PLUS app** seamlessly integrated with the broader smart home ecosystem, including **Amazon Alexa** and **Google Assistant**, giving homeowners the ability to view live footage and receive alerts remotely.

The **CONTROL4** video doorbell provided an advanced level of security with high-definition video streaming and two-way audio. Homeowners could monitor and communicate with visitors at the door from anywhere using the **CONTROL4 app**. The doorbell featured smart motion detection, sending alerts whenever someone approached the door, thus enhancing security. This remote monitoring functionality allowed homeowners to see who was at the door even when they were not at home. The **CONTROL4 doorbell's** sleek, modern design blended seamlessly with the rustic farmhouse aesthetic, offering enhanced security while maintaining the visual integrity of the home's exterior.

The **YALE Smart Lock Pro** offers a convenient keyless entry system that allows homeowners to lock and unlock their doors remotely through the YALE app, providing the added benefit of granting access to others via virtual keys. This system is particularly beneficial for rural homes where physical keys can easily be lost or misplaced. With the ability to lock or unlock the door remotely or automatically through geofencing, the door unlocks when the homeowner is nearby, ensuring ease of access without the need for physical keys. Additionally, the YALE Smart Lock Pro integrates seamlessly with other smart devices like **Amazon Alexa** and **Google Assistant**, allowing homeowners to control the lock using voice commands or set up automation, such as locking the door automatically when everyone leaves the house. The lock attaches easily to existing deadbolt hardware, making installation straightforward and preserving the rustic look of the door without the need for significant modifications.



Smart Audio and Video Systems: For a premium entertainment experience, **MOORGEN** Speakers are integrated throughout the farmhouse to deliver high-quality, multi-room audio. These **Sonos** speakers can be controlled through the **CONTROL4 app** or voice commands via **Amazon Alexa** and **Google Assistant**, ensuring seamless audio control in every area of the home. Additionally, **Samsung Smart TVs** (QLED Series) with built-in voice assistants like **Bixby**, **Amazon Alexa**, and **Google Assistant** enable effortless streaming, smart device control, and integration with other voice-controlled apps.

Smart Shades and Blinds: Motorized window treatments, such as Lutron Serena Shades and Somfy Motorized Blinds, offer automated control over the opening and closing of shades based on time of day or room occupancy.

These systems integrate seamlessly with other smart home platforms like Amazon Alexa and

Google Assistant, providing ultimate control over natural light and privacy.

Smart Energy Management: Energy efficiency is at the heart of smart farmhouse living. The Sense Energy Monitor is installed in the electrical panel to track real-time energy consumption from various appliances and devices. Through the CONTROL4 app, homeowners can monitor which devices are consuming the most power, helping to optimize energy usage and reduce electricity bills.

Voice Assistants and Smart Hubs: To bring everything together, Amazon Echo (4th Gen) and Google Nest Hub Max serve as central hubs for voice-based automation. The systems work together through centralized control platforms like Amazon Alexa, Google Assistant, and Samsung SmartThings, allowing homeowners complete control over their environment with ease.



Smart Lighting

The home's lighting systems were seamlessly integrated with Hybec lighting solutions, allowing homeowners to control both indoor and outdoor lights through a single app or via voice assistants. These systems were connected to the CONTROL4 Hub, enabling automation based on occupancy, time of day, or specific activities. For instance, motion sensors linked to the KNX system automatically turn lights on when a room is occupied and off when it's empty. Custom lighting scenes were created for various moods or activities, such as dinner, relaxation, or movie nights, ensuring a personalized experience.

The HVAC system was integrated with the smart home hub to allow remote control of heating and cooling, optimizing the temperature based on the homeowner's routines or proximity to the house using geofencing. Smart ceiling fans and Zoned HVAC systems were also incorporated, providing room-specific temperature control that enhances comfort while conserving energy.

Motorized window shades from MOORGEN were integrated into the home's automation

system. These blinds were controlled through the CONTROL4 app and could be scheduled to open or close depending on factors such as the time of day, temperature, or personal preference. The integration with smart lighting ensured that when the lights were dimmed for movie nights, the shades automatically closed to provide privacy and prevent glare on screens, creating a more immersive viewing experience.

Home Theatre and Accessories

Another important highlight was the Home Theatre, as the homeowners wanted to create an immersive, cinematic experience within the comfort of their home. Given the farmhouse's rustic charm, it was essential to integrate the latest technology while maintaining the aesthetic appeal and warmth of the interior.

To optimize sound quality, the room's dimensions were considered to minimize sound reflection, and acoustic panels were strategically incorporated into the design. These panels, tailored to blend seamlessly with the farmhouse's rustic style, featured fabric-wrapped finishes in neutral tones and wood accents that enhanced both acoustics and aesthetic appeal.



For the ultimate home theatre experience, a 4K Ultra HD projector from LG was chosen for its exceptional picture quality, accurate color reproduction, and HDR capabilities. Mounted on the ceiling using a motorized lift, the projector can retract when not in use, maintaining the room's sleek design. The projector is paired with a motorized Elite Screens projector screen, which measures 120 inches diagonally and provides a 16:9 aspect ratio, ensuring cinematic proportions and an optimized viewing experience based on the room size and seating arrangement.

For immersive sound, the Marantz SR8015 AV receiver was selected for its 9.2 channel surround sound, Dolby Atmos, and DTS: TRIAD X capabilities. This receiver supports 4K pass-through, allowing for high-definition visuals while delivering dynamic and immersive sound.

The front speakers consist of high-performance Reference Premiere floor-standing speakers, which provide crystal-clear vocals and impactful sound. Surround sound is delivered by discreet in-wall TRIAD speakers positioned at the sides and back, creating a fully immersive 7.1.2 sound system. The subwoofer, an SVS PB-2000 Pro, delivers deep bass,

ideal for action sequences and music, while ensuring controlled sound without distortion. To complete the audio experience, TRIAD ceiling speakers were integrated to provide overhead Dolby Atmos sound, enhancing the three-dimensional feel of the soundstage, particularly for movies and gaming. Custom speaker wiring was installed behind the walls and ceiling panels, maintaining a clean, unobstructed look while ensuring optimal sound delivery.

For video and media sources, an Apple TV 4K was integrated to stream high-definition content from popular services like Netflix, Amazon Prime, and Disney+, supporting Dolby Vision and HDR10 for superior image quality. A 4K Ultra HD Blu-ray player from LG was added for physical media playback, offering the highest quality for classic films and content not available on streaming platforms.

Additionally, a PlayStation 5 (PS5) or Xbox Series X was included for gaming, connected directly to the AV receiver for seamless integration with the home theatre's audio system.

Overall, the thoughtful design exemplifies how smart technology can enhance rural living without compromising on style or comfort.



Blending Mediterranean Charm with Modern Technology

Architects Kavita A Batra and Ashish Batra in collaboration with Xsys Solutions blends timeless coastal architecture with modern home automation, creating a harmonious residence for a client in Raipur.

Kavita A Batra and Ashish Batra, Principal Designers and Founding Partners of Uniifyy, in collaboration with System Integrators Xsys Solutions, have designed a residence inspired by Mediterranean architectural heritage, enhanced by cutting-edge home automation. Drawing from the rich design vernaculars of coastal regions in Greece, Italy, and Southern Spain, the talented duo has crafted a holistic environment that encapsulates the essence of the Mediterranean lifestyle.

Explaining their design concept, Kavita A Batra shares, "The conceptual framework went beyond aesthetics. We focused on carefully curating materials, studying contextual elements, and understanding the psychological impact of spatial design.

Plus incorporating smart technology. This comprehensive approach allowed us to connect Mediterranean influences with the functional and emotional aspects of daily life." The apartment's layout clearly separates public and private zones to ensure optimal functionality. The centrally located living room serves as the focal point, linking both areas while maintaining a woman-centric design. The best views are oriented toward the outdoor terrace, enhancing the space's connection to nature and its overall charm.

Throughout the interiors, the furniture reflects the relaxed yet refined Mediterranean lifestyle. Plush sofas and lounges upholstered in earthy tones and natural textures such as linen and wicker offer comfort and evoke a



direct connection to the coastal surroundings. Minimalist coffee tables and consoles incorporate traditional Mediterranean craftsmanship, adding a sense of heritage to the space.

Integration of Home Automation & Smart lighting

“The primary objective of installing a lighting control system in this luxury home is to enhance ambiance, convenience, energy efficiency, and personalization, while complementing the home’s overall aesthetic and functionality. Achieving a smart home that delivers the utmost luxury was a key goal for the design, with a focus on using technology to simplify daily life and create mood settings suitable for all age groups. As designers, we understood the responsibility of integrating technology with the aesthetic, functional, and emotional aspects of the living environment. Their main aim was to ensure that the smart home technologies enhanced the homeowner’s lifestyle while maintaining the elegance and harmony of the design. The first step was to collaborate with an experienced system integration company

capable of understanding and implementing the designers’ vision, while meeting the client’s expectations. The following key points were the core focus of the project.” informs Ashish Batra,

The design team also aimed at the concealment of technology, ensuring that devices such as speakers, sensors, control panels, and wiring are discreetly integrated into the interior design. This was done to maintain the aesthetic integrity of the space while providing the necessary functionality.

The architects focused on harmonization smart devices carefully by selecting right option that matched home’s overall décor style. This involved choosing finishes, colours, and placements that complement the decor and create a cohesive look throughout the home. Optimal placement of smart devices, such as lighting controls, motion sensors, and AV equipment, was essential to ensure both functionality and aesthetics.

Plus, the team also focused on crucial element, enabling dynamic lighting scenes that adapt to different activities or moods, such





as movie nights, dinner parties, or relaxation. Architectural highlighting is also prioritized, with accent lighting used to showcase artwork, furniture, or architectural features, adding to the overall ambiance of the space.

For this project, the team selected the Lutron Lighting Control System with analog and phase-cut dimming to meet the client's need for a reliable and low-maintenance system. Given that the project was located in Raipur, the client had concerns regarding after-sales support, so the control design was kept simple. This was done to ensure that, in case of any service requirements, a local electrician or service provider could easily replace faulty lights or devices, minimizing delays or hassles for the end user. In addition to the lighting control system, other key elements of the project included Somfy motorized shades for

automated window treatments, Earthquake Speakers System for high-quality audio, and Marantz amplifiers for superior sound amplification. CoolAutomation managed the HVAC system to ensure efficient climate control, and the entire system was integrated by Xsys Solutions, ensuring seamless coordination of all technologies within the home.

Overall, the design of this Mediterranean-inspired residence successfully blends timeless architectural heritage with modern comforts and smart home technology. Kavita and Ashish Batra, through their thoughtful approach to both aesthetics and functionality, have created a space that not only reflects the beauty and serenity of coastal living but also enhances the daily life of its inhabitants through seamlessly integrating home automation.



TECH SPECIFICATION:

System Integrator: Xsys Solutions

Lighting Control System: Lutron
Lighting Control System

Motorised Shades: Somfy

Audio: Earthquake Speakers
System

Amplifications: Marantz

HVAC: CoolAutomation

Top Indian Distributors and Their Key Brand Offerings



The Brand Connect section will feature comprehensive profiles of leading Indian distributors, showcasing their expertise, the key brands they represent, and the range of products they offer in the market. This section will also provide valuable insights into their strategic plans for 2025, helping professionals understand the direction these companies are taking and the opportunities they bring to the industry.

Smart Home World aims to keep system integrators, installers, and tech enthusiasts informed. This section will highlight the latest developments, trends, and partnerships in the Home Automation, and Audio-Video to name a few. It will serve as a hub for discovering the top brands distributed by these industry leaders.

Flip through these pages to stay updated on the latest innovations and gain deeper insights into the brands shaping the future of the industry.



Cinebels: 25 Years of Home Entertainment Excellence



ARJUN AGARWAL

CEO, Cinerama Pvt Ltd

Company Insights

Cinebels, headquartered in Bengaluru, was founded in 1999 and is celebrating 25 years of excellence in the home entertainment industry. The parent company, Cinerama Pvt Ltd, has been a leader in professional cinema across India since its establishment in 1954, specializing in manufacturing and installing projectors, sound processors, and speakers. Since its inception, Cinebels has been at the forefront of the Indian home entertainment market, with company-owned showrooms and service centers in Bengaluru, Mumbai,

Chennai, Hyderabad, and a branch office in New Delhi. Today, Cinebels works with over 500 partners and maintains a service center presence across 15 key locations throughout India.

Cinebels exclusively distributes some of the most prestigious home entertainment brands globally. For over 15 years, the company has represented Klipsch, America's leading speaker brand, across various segments including personal audio, home cinema, custom installation, premium audio, and commercial products. To complement Klipsch's American

engineering, Jamo, one of Europe's top speaker brands, is also part of the portfolio. For high-end audiophiles, Bryston, the renowned Canadian manufacturer of handcrafted Hi-Fi audio components, is offered. Additionally, Onkyo, Pioneer, and Integra provide a range of AV receivers and stereo amplification

solutions. The latest addition is WiiM, a leader in multi-room audio that delivers audiophile-grade networked streamers and amplifiers at great value. Expanding its offerings, Cinebels has also introduced its own line of premium speaker and HDMI cables.

BRANDS REPRESENTED:

Klipsch – Speakers

Klipsch®

Jamo – Speakers

Jamo®

Bryston – Hi-Fi Audio Components

Bryston

Onkyo – AV Receivers and Electronics

ONKYO®

Pioneer – AV Receivers and Electronics

Pioneer

Integra – AV Receivers and Electronics

Integra®

WiiM – Networked Streamers and Amplifiers

WiiM

PRODUCT CATEGORIES:

Speakers

AV Receivers & Amplifiers

Multi-Room Audio

Custom Install Solutions

Cables & Accessories

Key Projects and Clients: Cinebels caters to a broad B2B clientele, including home theater designers, integrators, and professional audio-visual installers. The company has successfully completed numerous custom installation projects across India, working with leading architecture firms, hospitality sectors, and residential customers seeking premium audio-visual experiences.

Plans for 2025: Looking ahead to 2025,

Cinebels is focused on expanding its reach and strengthening its position in the custom install market. With an exciting portfolio of brands like Klipsch and Integra, the company plans to double down on custom installations, offering high-quality solutions for home and commercial spaces. The company is particularly excited about the Jamo brand, which is set for a relaunch in May 2025 at the Smart Home Expo in Mumbai. With a refreshed roadmap and cutting-edge Danish



design, Jamo is expected to make a significant impact. Additionally, the high-end market for Bryston and Klipsch Heritage speakers continues to grow, and Cinebels is poised to capitalize on this trend. The introduction of Onkyo's rebranding and new Hi-Fi innovations, along with new connected audio products from Klipsch, further solidifies the company's optimism for the year ahead.

Insights on the Indian Market and Target Categories: India's home entertainment market continues to expand, with a strong emphasis on custom installations, premium audio, and connected audio solutions. Cinebels recognizes the potential for significant growth in these sectors, particularly with the rise of smart homes and the demand for high-end audio-visual products. With the Indian market becoming increasingly tech-savvy, Cinebels aims to bring world-class products

to consumers, offering innovative solutions for both residential and commercial spaces. The company's commitment to providing the best of global brands, along with their own products, positions them well for continued success in the years ahead.

Looking Forward to 2025: Cinebels remains highly optimistic about the future, with a clear strategy to strengthen its position in the custom install market, expand the reach of Klipsch and Jamo, and drive innovation with the latest audio technologies. With a focus on delivering cutting-edge products and unmatched service, Cinebels is poised to lead the way in India's home entertainment industry.

Contact Details:

☎ +91 93413 30907 🌐 www.cinebels.com
✉ cinebels@cineramagroup.com



Miantic AV: Innovators in Home Automation, AV, and Smart Technology Solutions



MANOJ MANCHALA

Founder & Director, Miantic AV

Companies Insights

Miantic AV stands at the forefront of India's Audio Visual distribution landscape, delivering cutting-edge solutions that blend innovation, performance, and reliability. With a robust product line up spanning Automation, Audio, and Connectivity, Miantic AV empowers professional installers and integrators to create intelligent and immersive environments tailored to modern living and working needs. By offering a curated selection of world-class products, we ensure seamless integration of control systems, high-fidelity audio solutions, and advanced connectivity tools. Our portfolio



SAURABH THAKAR

Founder & Director, Miantic AV

represents the pinnacle of technology, designed to enhance comfort, convenience, and entertainment across diverse verticals, including residential, corporate, hospitality, education, and more.

Professional-Only Approach

Miantic AV is deeply committed to supporting professional installers and integrators. As a trusted partner, we focus exclusively on the B2B space and do not engage in direct sales to consumers. This ensures our efforts remain aligned with the needs of AV professionals, offering them the tools, resources, and support

required to deliver exceptional results.

Partnerships with Industry Leaders

Miantic AV collaborates with globally renowned brands that share our commitment to quality and innovation. These partnerships enable us to bring award-winning, reliable, and scalable solutions to the Indian market, helping integrators meet the growing demand for intelligent AV systems.

Comprehensive Solutions & Expertise

Our team of engineers, Pre-Sales consultants, and sales professionals offers a full suite of services, from design consultation to installation support, ensuring a smooth journey from concept to execution.

Nationwide Presence

With a robust dealer network, Miantic AV has a strong presence across all major cities in India. This extensive reach allows us to provide local support and solutions to integrators and professionals nationwide, ensuring timely delivery, installation, and after-sales service.

Extensive Dealer Network

With a network of over 800 dealers across India specializing in Audio-Video, Automation, and IT industries, we ensure seamless availability of our products nationwide.

Demo Facilities

Hyderabad Demo Facility: Spanning 14,000 square feet, our state-of-the-art demo facility provides dealers and their customers with a first-hand experience of our solutions.

Ahmedabad Demo Facility: A 3,000 square feet demo center under construction scheduled to open in April 2025, designed to enhance the dealer and customer experience further.

In 2025, our goal is to go beyond the ordinary by:

Identifying Market Gaps: We'll analyze our existing brands and provide valuable feedback to our principals to address these gaps.



Exploring New Opportunities: We aim to expand into new categories, introducing innovative solutions to meet evolving market demands.

By staying ahead of industry trends and continuously evolving, Miantic AV is committed to empowering AV professionals with the tools and solutions they need to succeed.

Why Choose Miantic AV?

Innovation at its Core: We represent cutting-edge technologies that redefine how people interact with their environments.

Unparalleled Support: Our team is dedicated to providing exceptional customer service and reliable technical assistance.

Trusted by Integrators: With a reputation for trust, security, and professionalism, we are a preferred partner for AV professionals across India.

Miantic AV is committed to transforming how India experiences automation, audio,



and connectivity. Together with our partners and clients, we are creating a smarter, more connected world.

Distribution with a Difference

Transform your space with intelligent automation solutions:

HVAC Control: Perfect temperature, always at your command.

Keypad Lighting Systems: Elegant and intuitive control for your lighting needs.

Multi-Room Audio: Music that follows you everywhere, perfectly synchronized.

Home Integration: Connect and control your world effortlessly.

AV Receiver & Processor: The Heart of Your AV System

Our AV Receivers and Processors are the core components that bring your audio and visual

systems to life. Whether you're setting up a home theater or an advanced multi-room audio system, these devices deliver unmatched sound processing, support for high-definition video, and seamless connectivity for all your AV needs.

High-End Audio/Video Processing: Enjoy superior sound and picture quality with the latest technology.

Advanced Surround Sound: Elevate your movie nights with immersive surround sound options.

Multi-Zone Capability: Distribute audio and video across different areas of your home for a fully connected experience.

Audio: Unmatched Sound for Every Space From immersive cinema to everyday enjoyment, our audio solutions deliver:

Home Theatre Systems: Experience sound so real, you'll feel like you're there.

Living Room Audio: Sleek, high-performance setups for modern living.

Outdoor Speakers: Durable, weather-resistant sound for patios, gardens, and pools.

In-Ceiling & In-Wall Speakers: Invisible sound solutions that blend into any décor.

Whole-Home Audio: Tailored sound for every corner of your home.

Connectivity: The Backbone of AV Systems
Stay connected with reliable, high-quality solutions:

Cables: From Speaker Cables and KNX Cables to HDMI and CAT Cables, we offer robust solutions for seamless performance and durability.






HDMI Distribution: HDMI distribution solutions provide high-performance video and audio distribution technologies designed for professional installations. With advanced



features and reliable scalability, our products ensure seamless integration for projects of any size, from single-room setups to large-scale systems.

Miantic AV collaborates with several leading brands in the Audio-Visual and Home Automation sectors. Here are some of the key brands they distribute:








Automation

	RTI Control Specializes in whole-house control and integration solutions, offering advanced control systems for residential and commercial applications
	Black Nova Offers stylish, innovative, and elegant keypads for lighting and automation control, enhancing the aesthetic appeal of smart homes.
	Tyba Delivers intuitive control systems with touch, swipe, and turn functionalities, simplifying user interaction with home automation systems.
	Cool Automation Provides HVAC control and monitoring solutions, integrating climate control into home automation systems.
	CasaTunes Your go-to multi-room audio system, offering seamless audio distribution throughout the home.



AV Receiver & Processor

	Storm Audio Provides audio processors and amplifiers for high-end cinema, delivering exceptional sound quality for home theaters.
---	---

Audio

	M&K Sound Known for premium home cinema loudspeakers, delivering exceptional sound quality for home theater enthusiasts.
	Ascendo Immersive Audio Leading home theater loudspeaker technology, delivering immersive audio experiences for home cinema enthusiasts.
	SpeakerCraft A leader in in-wall and in-ceiling speakers, offering discreet and high-performance audio solutions.
	XSCACE Offers size-defying sound solutions, providing compact yet powerful audio experiences.
	Garvan Acoustics Provides luxury architectural and acoustic solutions, focusing on high-quality sound and design integration.
	Cerasonar Specializes in invisible speakers and subwoofers, providing innovative audio solutions that blend seamlessly into any environment.
	Zero DB A German brand known for natural sound quality and the enduring quality of their speakers.

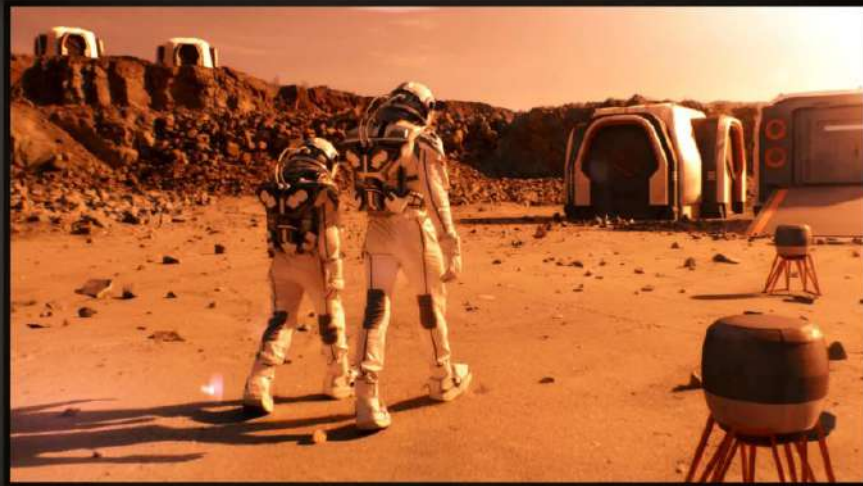
Connectivity

	Blustream Offers HDMI distribution solutions for homes and corporate settings, ensuring high-quality video and audio signal distribution.
	Kordz Leaders in HDMI, speaker, and CAT cables, providing durable and high-performance connectivity solutions.

These collaborations enable Miantic AV to offer a diverse range of products and solutions, catering to various needs in the AV and home automation sectors.

Contact Details:

☎ +918866884669
 🌐 www.miantic.com
 ✉ saurabh@miantic.com



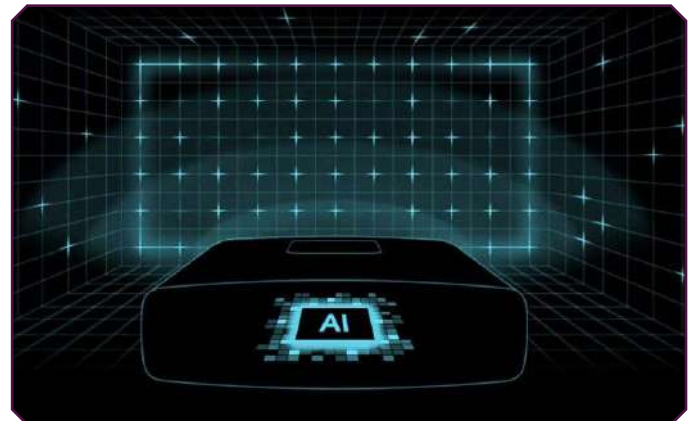
AI in Projectors: Revolutionizing Home Entertainment and Beyond

Artificial Intelligence (AI) is fundamentally reimagining how we experience content. From home entertainment to education, AI-driven projectors are transforming user experiences by enhancing convenience.

AI has democratized these premium experiences by automating complex processes such as calibration and environmental adjustments. As a result, high-quality viewing experience is more accessible than ever.

One of the most significant advancements in modern projectors is the integration of sensors as ambient-aware systems. AI-powered projectors intelligently optimize colour, and brightness based on ambient light and scene content. This adaptive technology ensures an immersive viewing experience with stunning visual clarity in any setting

Whether used in a brightly lit living room or a dimly lit home theatre, these systems ensure



that viewers receive an optimal experience This capability addresses a persistent challenge for projectors, enhancing usability and making them a more viable alternative to TVs.

BenQ: Leading the Way in AI Integration

BenQ is launching world's first AI – powered projector range. By consistently pushing the boundaries of innovation, BenQ has introduced cutting-edge features that



redefine user experiences. For example, its AI-enabled projectors, leveraging sensors to automatically adjust brightness, contrast, and colour based on the room's environment.

These systems adapt dynamically to various content types and lighting conditions, providing a seamless and immersive experience. In addition, BenQ's projectors simplify installation and calibration processes through advanced AI capabilities, making professional-grade picture quality achievable for everyday users. The company's commitment to innovation, positions it at the

forefront of the AI revolution in projection technology.

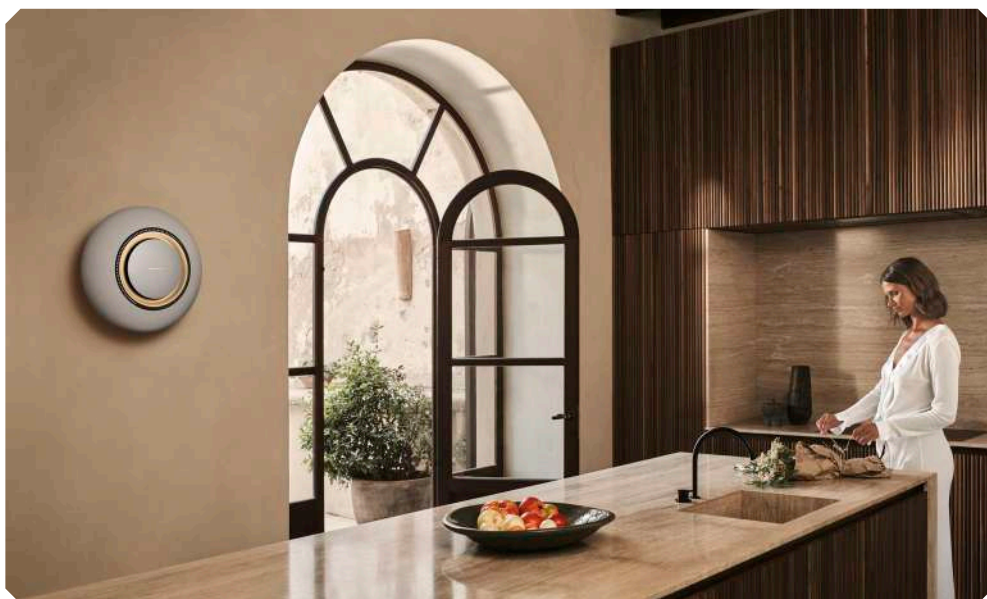
Future Prospects

Looking ahead, AI's role in projection technology will extend beyond optimizing picture quality. Future projectors are poised to integrate into smart home ecosystems, coordinating lighting, sound, and even environmental controls to create holistic entertainment experiences. This evolution represents a shift from reactive technology to proactive systems that anticipate user needs.



Marantz Grand Horizon: The Pinnacle of Luxury Audio

The Marantz Grand Horizon redefines the premium wireless speaker experience with an unparalleled blend of sophisticated design and powerful performance. Designed for larger living spaces, the Grand Horizon delivers pristine, room-filling sound with Marantz's signature audio quality—crafted by world-renowned engineers and sound masters, backed by 70 years of industry-leading excellence.





KEY HIGHLIGHTS:

- **Timeless Design:** The Grand Horizon features a unique yet classic silhouette, crafted from luxurious materials and available in three stunning finishes: Moon Ray, Midnight Sky, and Marantz Champagne. Complementary natural marble bases add an extra touch of elegance to your home decor.
- **Immersive Sound:** With Marantz's proprietary **Rise™ Amplifier**, this speaker effortlessly powers its impressive 370W output, ensuring dynamic and clear audio across large spaces. Its high-performance speaker array includes an 8-inch Marantz Gravity bass, 4 wideband drivers, and 3 high-frequency tweeters, delivering rich sound from 28Hz to 20kHz.
- **AuraControl™ & HEOS® Integration:** Enjoy intuitive control with AuraControl™ for a seamless and elegant user experience. The built-in **HEOS®** system allows you to stream all your favorite music services, including Pandora, Spotify, TIDAL, Amazon Music, and more, while maintaining multi-room audio consistency.
- **Advanced Streaming & Connectivity:** Equipped with Bluetooth 5.4, AirPlay 2, and support for Dolby Atmos and Dolby TrueHD, the Grand Horizon ensures exceptional audio streaming. With **USB-C, HDMI eARC/ARC, and Ethernet** connectivity, it is fully integrated with modern home systems and compatible with popular control systems like Crestron, Control4, and AMX.
- **Seamless Setup:** The Grand Horizon supports both wired and wireless connectivity, with a dual-band Wi-Fi system and the **HEOS App** for easy setup and operation from your smartphone, tablet, or Kindle Fire.



Unmatched Power & Performance: With a **peak power output** of 860W (and raw amplifier power reaching 1400W), the Grand Horizon reaches **SPL levels up to 122dB**, filling your space with lifelike sound.

Whether it's streaming from your favorite music service or connecting to local network storage, the **Marantz Grand Horizon** is the perfect centerpiece for any audiophile or design-conscious listener seeking the ultimate in sound and style.

SPECIFICATIONS:

- **Amplifier Power:** 370W (FTC), 860W (Peak), 1400W (Raw Power)
- **Frequency Response:** 28Hz - 20kHz (+/- 3dB), 18Hz (-10dB)
- **Audio Formats:** Dolby Atmos, Dolby TrueHD, DSD, LPCM
- **Connectivity:** Ethernet, Dual-band Wi-Fi, Bluetooth 5.4, AirPlay 2
- **Streaming Support:** Pandora, Spotify, TIDAL, Amazon Music, Deezer HiFi, and more
- **Dimensions:** 19.41" x 10.04" x 20.83" (493mm x 255mm x 529.2mm)
- **Weight:** 46.9 lbs (21.3 kg)

Elevate your audio experience with the **Marantz Grand Horizon**—a luxurious, high-performance speaker designed for those who demand the best in both sound and style.



Light + Intelligent Building Middle East Showcased the Latest Advancement

The 18th edition of Light + Intelligent Building Middle East concluded successfully, attracting large crowds and sparking insightful discussions on innovation, sustainability, and collaboration. The event highlighted the future of lighting design and building technologies, leaving a lasting impact on the industry.

The 18th edition of Light + Intelligent Building Middle East was officially inaugurated by Saeed Mohammed Al Tayer, Managing Director and CEO of Dubai Electricity and Water Authority (DEWA), at the Dubai World Trade Centre (DWTC). This year the event was held from January 14-16, 2025, this landmark event has become the region's leading platform for showcasing the latest advancements in lighting and building technology. This year's theme, 'Building Commonality Through Community, Creativity and Culture', emphasized the role of collaboration, creativity, and cultural diversity in shaping the future of building technologies.

The exhibition covered six key product sectors: **Technical Lighting, Electric Lamps and Components, Decorative Lighting, Architectural Lighting, Electrical Engineering,**

and **Smart Home and Building Automation.** The event also featured country pavilions from China, Hong Kong, and Germany, further enhancing its global reach.

Light + Intelligent Building Middle East 2025 received strong support from renowned global organizations, including KNX, the Illuminating Engineering Society (IES), the Society of Light and Lighting (SLL), the International Association of Lighting Designers (IALD), and many others, cementing its position as a premier international platform for innovation and collaboration.

During the opening ceremony, Al Tayer visited several prominent exhibitors, including industry giants such as LEDVANCE, Honeywell Lighting (Vesra), Illus (Marketing Home Group), Vimar,

Broadlink, and NuLumenTek. His presence underscored the strategic importance of the event in promoting sustainable innovation and the latest technological developments within the lighting and building sectors.

Abdul Muhsin, Show Director for Light + Intelligent Building Middle East, shared his enthusiasm about the expanded scope of this year's edition: "We are thrilled to present over 150 expert speakers across three stages—THINKLIGHT, InSpotLight, and the Smart Building Summit—along with engaging interactive workshops. The grand finale will be a prestigious awards night celebrating outstanding contributions to the global lighting industry."

Smart Technologies and Sustainability at the Smart Building Summit

One of the highlights at the Smart Building Summit, commenced with an opening address by Azmi S. Aboulhoda, CEO, EMergy. The summit explored critical issues such as 'Regulatory Standards and Compliance Governing Smart Buildings', 'Cybersecurity in Smart Buildings', and 'The ROI of Smart Buildings'. These discussions featured insights

from leading international organizations including the UAE Circular Economy Council, Dubai Municipality, buildingSmart (UK and Ireland), and the Supreme Council of Energy. The summit also highlighted how smart technologies driving the future of architecture and urban planning, with a strong focus on energy efficiency, occupant safety, comfort, and sustainability in the development of future urban environments.

Lighting Evolution at THINKLIGHT

At THINKLIGHT, regional and international lighting professionals gathered to explore the transformative power of lighting design. A key session featured a keynote speech on 'The Evolution of Lighting Design in the Middle East: 25 Years of Shaping the Region's Lighting Design Practice' by dpa Lighting Consultants. The conference also spotlighted Saudi Arabia, with a session dedicated to its emergence as a global epicenter for innovative lighting in the context of its expanding infrastructure and urban projects.

The conference addressed evolving lighting standards, design innovation, and the rise of smart lighting solutions for both residential and commercial spaces.





InSpotLight: Product Showcase and Networking

The opening day of InSpotLight featured the 'Specifiers' Arena - Product Pitch', where finalists of the Light Middle East Awards 2025 in the Product of the Year category showcased their innovative products and solutions. This exciting live competition allowed industry professionals to present their cutting-edge designs, vying for prestigious industry recognition.

Day two of InSpotLight included a dynamic panel discussion led by Women in Lighting ambassadors, addressing the challenges and opportunities for women in the lighting design industry. Additionally, the event explored key topics such as outdoor smart lighting, IoT integration, and how the industry is preparing the next generation of designers through skills development and networking opportunities.

Celebrating Excellence at the Light Middle East Awards 2025

The Light Middle East Awards 2025 returned for its 11th edition, honoring the most exceptional lighting projects, products, and designers from around the world. The awards ceremony, held

on the final day of the event, brought together over 550 industry leaders, professionals, and innovators to celebrate excellence and innovation in the lighting sector.

Co-location with Intersec: A Comprehensive Trade Fair for Building Services

This year, the event was co-located with Intersec, creating the largest trade fair for the building services sector in the MENA region. Together, the two events formed a comprehensive showcase of cutting-edge solutions in lighting, building technology, fire safety, security, and smart home automation. With exhibitions held across Za'abeel Halls 1-4 at the Dubai World Trade Centre, Light + Intelligent Building Middle East continues to play a pivotal role in shaping the future of lighting and building technologies in the region.

As the event concluded with very good attendance and engaging sessions, the collective focus on innovation, sustainability and collaboration had a lasting positive impact on the industry. This event will inspire the future of lighting design and building technologies, both across the Middle East and globally.



CES 2025 – A Glimpse into the Future of Technology

The highly anticipated CES 2025, held in Las Vegas from January 7-10, concluded with remarkable success, drawing an impressive crowd of tech enthusiasts, industry leaders, and innovators from around the world. With over 4,500 exhibitors showcasing cutting-edge technologies, CES 2025 reaffirmed its position as the global platform for groundbreaking innovations and technological advancements.

This year CES 2025 showcase an exciting array of innovations across various industries, including consumer electronics, AI, Robotics, Automotive, Health Tech, Sustainability to name a few. This year the show focused the integration of Artificial Intelligence, 5G connectivity, and the Internet of Things (IoT), driving smarter solutions and enhanced experiences across sectors. Attendees witnessed the unveiling of next-gen smart home devices, Smart Automation, Smart Lighting Autonomous Vehicles, Wearable Tech, Health Tech, Immersive VR/AR experiences, with major companies like Samsung, Sony, LG, and Intel leading the way.

AI and Robotics Take Center Stage

One of the standout features of CES 2025 was the dominance of Artificial Intelligence (AI) and Robotics. From AI-driven healthcare solutions that promise to revolutionize diagnostics and treatments to autonomous robots designed for home assistance, the show highlighted how AI is shaping the future of industries. Additionally, robotics companies showcased advancements in automation, with robots designed for personal, industrial, and commercial use now becoming more sophisticated, efficient, and human-centric. Sustainability at the Forefront

CES 2025 also placed a significant emphasis on sustainability, showcasing innovations designed to tackle pressing environmental challenges. Electric vehicles (EVs), eco-friendly smart devices, and energy-efficient solutions took center stage, reflecting the growing demand for sustainable technologies. A range of green innovations, from solar-powered gadgets to AI-powered energy management

systems, underlined the event's commitment to creating a more sustainable and eco-conscious future.

Health Tech Innovations

Health technology was another major theme at CES 2025. From AI-powered health monitoring systems to personalized wellness solutions, the event highlighted how tech is transforming healthcare. Wearables with advanced health-tracking capabilities, including biometric sensors that monitor everything from sleep patterns to stress levels, were on full display. With a focus on mental health, fitness, and overall well-being, CES 2025 showcased technologies that are empowering consumers to take charge of their health like never before.

Smart Cities and the Future of Connectivity

CES 2025 also explored the future of urban living, with a strong focus on smart city technologies. Companies unveiled innovations aimed at improving urban mobility, energy efficiency, and public safety. Connected infrastructure, AI-powered traffic management systems, and sustainable building solutions were all highlighted, illustrating the transformative potential of smart cities. With the rise of 5G connectivity, CES attendees saw how faster, more reliable networks are enabling smarter cities and connected ecosystems.

An Engaging Experience for All Attendees

Throughout the event, CES 2025 provided a platform for networking, knowledge sharing, and collaboration. Attendees had the opportunity to engage with industry experts through conferences, panel discussions, and workshops. The show's dedicated keynote sessions saw influential speakers from leading tech companies and organizations sharing insights into the future of AI, sustainability, and digital transformation.

The event also included the CES Innovation Awards, where standout products were recognized for their excellence in design and technology. The awards showcased the best of the best, honoring companies for their contributions to pushing the boundaries of innovation.

For those who couldn't attend, here's a sneak peek at some of the groundbreaking products unveiled at CES 2025

Aqara Unveiled Advanced Smart Home Solutions including in-wall control panels, smart switches, sensors, and expanded Matter Controllers. Notable introductions include the company's first in-wall panels for global markets—Panel Hub S1 Plus, Touchscreen Dial V1, and Touchscreen Switch—which provide centralized control via intuitive touchscreen interfaces, allowing users to easily manage smart devices and scenes without the need for a smartphone.



Aqara's new Light Switch H2 and Dimmer Switch H2 offer future-proof connectivity with Thread and Zigbee, ensuring enhanced flexibility and compatibility across North America and Europe. The Presence Multi-Sensor FP300 and Climate Sensor W100 provide optimized energy efficiency and enhanced comfort. Additionally, the Doorbell Camera Hub G410 delivers 2K video quality, facial recognition, and advanced privacy features, seamlessly integrating with major platforms like Apple Home, Alexa, and Google Home.

Completing the lineup is the Hub M100, a compact Matter controller that supports Wi-Fi, Thread, and Zigbee, enabling effortless management of Aqara and third-party Matter devices. These cutting-edge products underline Aqara's commitment to creating interoperable, future-ready smart home ecosystems.

EcoFlow introduced its groundbreaking AI-powered Home Energy Management System, Oasis, designed to revolutionize how homeowners manage their energy usage.

Oasis uses advanced Artificial Intelligence (AI) to provide real-time insights and management of home energy, allowing users to interact with an AI assistant to answer complex energy-related queries like, “How can I maximize my solar energy usage today?”



A standout feature of Oasis is the EcoFlow Assistant, an AI chatbot within the app that can answer questions like “How much energy did I use today?” and offer automation for energy savings. The system can suggest running appliances during off-peak hours, switch to stored energy during peak pricing periods, and even manage home appliances based on weather forecasts and energy demand.

EcoFlow's open approach ensures compatibility with a wide range of third-party devices, including Ecobee and Nest thermostats, smart plugs from Shelly and TP-Link, and energy-efficient appliances. The system also supports Matter, enabling integration with solar panels, heat pumps, EV chargers, and more.

EcoFlow also announced the upcoming Ocean Pro, a high-capacity solar battery system for whole-home backup, set to compete with leading products like the Tesla Powerwall.

HDMI Forum Inc. unveiled the highly anticipated HDMI 2.2 specification, the next evolution in HDMI technology. Building on



the success of HDMI 2.1, HDMI 2.2 introduces a significant leap forward with an impressive 96Gbps bandwidth, supporting resolutions up to 16K, and delivering a future-proof solution for next-generation displays and content.

With support for 4K, 8K, 10K, 12K, and the groundbreaking 16K resolution, HDMI 2.2 sets a new standard in visual performance. The doubled bandwidth, compared to HDMI 2.1's 48Gbps, ensures that users can experience ultra-smooth gaming and high-performance media without compromise. The new standard also supports 4K content at an ultra-fluid 480Hz, providing an unrivaled viewing experience.

The HDMI Forum also announced the Ultra96 HDMI cable, designed to fully support HDMI 2.2's 96Gbps throughput, which will be available later in 2025. Additionally, the HDMI Latency Indication Protocol (LIP) will improve synchronization between audio and video devices like soundbars, AV receivers, and TVs, offering a more seamless entertainment experience.

Hisense introduced the L9Q, the latest evolution of its L9 Series, offering a perfect blend of versatility, performance, and luxury design. Available in five screen sizes from 100



to 150 inches. Hisense's proprietary TriChroma triple-laser light engine, offers 110% BT.2020 colour space for stunning colour accuracy. With an impressive brightness of 5,000 lumens and a 5000:1 contrast ratio, the L9Q ensures crystal-clear visuals, even in well-lit rooms. Paired with an Ambient Light Rejection (ALR) screen, available in sizes ranging from 100 to 150 inches, the L9Q adapts to any lighting condition. Equipped with HDMI 2.1, Wi-Fi

6E, and NEXTGEN TV (ATSC 3.0) support, the L9Q ensures future-proof performance and compatibility with the latest technologies, making it a perfect addition to any home entertainment setup.

Klipsch unveiled its latest innovation in party speakers, the Klipsch Vegas, Klipsch Miami, and Klipsch New York, all part of the newly launched Music City Party Speaker series. These Bluetooth-powered speakers, master-tuned by Roy Delgado, a protégé of the legendary Paul W. Klipsch, combine Klipsch's signature horn-loaded technology with modern advancements in speaker design to deliver exceptional sound quality and a dynamic party experience.



The Klipsch Music City Party Speakers are designed with partygoers in mind, offering built-in microphones for karaoke, various buttons for sound effects like airhorns, record scratches, and applause, as well as RGB lighting that syncs to the music. The Vegas and Miami models feature pole mounts for easy setup, while the Miami and New York models come with trolley wheels for portability. All three models are customizable via the Klipsch Connect Plus app, allowing users to tweak EQ settings, adjust light patterns, and more.

LG Electronics unveiled its latest innovations in the lifestyle projector category, setting a new standard for space efficiency and versatility. The CES Innovation Award-winning PF600U is



a groundbreaking 3-in-1 projector, Bluetooth speaker, and LED mood lamp into one sleek device. This multifunctional projector brings added versatility, transforming any space with its customisable ambiance. With FHD (1,920 x 1,080) resolution, 300 ANSI lumens of brightness, and seamless streaming via LG webOS, it ensures premium entertainment in any environment. LG's CineBeam S model takes compactness to the next level, making it the smallest-ever 4K Ultra Short Throw (UST) projector. Despite its small footprint, the CineBeam S produces stunning 4K UHD (3,840 x 2,160) resolution and 500 ANSI lumens of brightness, delivering vivid, lifelike visuals with impressive color accuracy—154 percent of the DCI-P3 color space.

Lutron unveiled its new Caséta Smart Shades, offering an affordable and versatile smart shading solution that integrates seamlessly with HomeKit and other smart home platforms. These smart shades mark the first offering under the Caséta brand and are a more budget-friendly alternative



to Lutron's previous smart shading options. Designed for durability, the Caséta shades operate quietly and in near-perfect unison, with a proven performance lifespan of over 10 years. Available in roller or honeycomb styles, the Caséta Smart Shades come in classic white or gray colors, and can be paired with other Caséta products like smart lights and switches for a complete home lighting and shading experience. Standard sizes up to 48 inches wide and 80 inches high with larger custom sizes available, including widths up to 96 inches and lengths up to 104 inches for an additional cost. For those seeking enhanced light control, an optional blackout feature is available for just \$30 extra.

Nice has unveiled its groundbreaking Mylo VoiceAssistant, a game-changer in smart home management. Recognized with a CES Picks Award in the Residential Systems category,



Mylo is fully integrated into the advanced Nice Home Management platform, offering unmatched speed, reliability, and data privacy. At the core of Mylo is context-awareness, powered by over 20 years of innovation and the latest enhancements from NiceOS 8.9. The voice assistant intuitively understands user location and device preferences, enabling natural language control of media, cameras, lighting, climate, and security. With Mylo, users can issue commands without specifying device names or locations, making home automation simpler than ever.

The assistant offers personalised options, allowing homeowners to select male or female voices and customize acknowledgment sounds. With continuous over-the-air updates, Mylo keeps getting smarter, adding new features, languages, and improved voice control capabilities. Designed with dealers in mind, Mylo simplifies installations and reduces support calls, streamlining the process for integrators.

Onkyo has unveiled its groundbreaking Creator Series, designed to transform the audio tools available to content creators, musicians, and podcasters. Combining premium sound quality with sleek, compact design, the Creator Series bridges the gap between high-end studio equipment and accessible, user-friendly solutions.

The Series promises unmatched sound fidelity and versatility, offering studio-level performance without the complexity of traditional equipment. With Bluetooth 5.3, 74 | SMART HOME WORLD | JANUARY 2025

USB-C connectivity, and support for high-resolution audio formats, the Creator Series is designed for flexibility and performance, making it the perfect addition to any home studio or mobile setup. Smart features like app-based equalizer controls, voice monitoring, and customizable sound profiles elevate its value, offering creators a versatile, all-in-one solution for diverse content formats.



The modular design allows users to pair multiple speakers for stereo or surround sound setups, while intuitive touch-sensitive controls and AI-powered noise cancellation make it a game-changer for content creation. By blending professional-grade audio with a user-friendly design, the Creator Series sets Onkyo apart from competitors in the crowded audio space.

Aurzen, unveiled Aurzen ZIP, the world's first tri-fold ultra-portable projector. This cutting-edge device combines sleek design with advanced technology, offering unmatched portability while transforming any space into a cinematic experience. The ZIP has been



honored as a CES® 2025 Innovation Awards Honoree, recognized for its groundbreaking engineering and innovative design.

Designed with versatility in mind, the Aurzen ZIP stands out with its tri-fold structure, which doubles as a built-in stand and features like Wi-Fi-Free AirLink Mirroring, ToF Real-Time Auto Focus, and a Vertical Full-Screen Mode optimized for mobile-first content. The ZIP is powered by the World's Smallest DLP Microchip (0.16") and the Thinnest 720p Optical Engine, ensuring high-quality visuals in a remarkably compact size. Whether streaming short-form videos, hosting a movie night, or delivering a presentation, ZIP adapts effortlessly to a wide range of scenarios.

Resideo Technologies has unveiled the new Honeywell Home X2S smart thermostat, a cutting-edge solution designed to improve home comfort while optimizing energy usage. ENERGY STAR® certified and Matter-enabled, the X2S thermostat offers significant energy savings, with an average reduction of 22% in heating and 17% in cooling energy consumption when users consistently employ the recommended scheduling feature.



The Honeywell Home X2S is compatible with major smart home ecosystems, including Amazon Alexa, Google Home, and Apple Home, allowing users to control setpoints and schedules directly through the Resideo First Alert app. Designed for easy installation, programming, and use, the X2S thermostat features Honeywell Home Thermostat Technology and a UWP® wall-mounting plate, ensuring seamless upgrades between devices. The large, bright display makes it easy to set up and schedule directly on the device or through the app.

Samsung Electronics unveiled its revolutionary new refrigerators featuring AI Hybrid Cooling technology, set to expand globally this year. AI

Hybrid Cooling technology integrates a high-efficiency compressor with a Peltier module, a semiconductor device that cools by leveraging temperature changes from electrical currents. The high-efficiency AI Inverter Compressor contributes to even greater energy savings. It features a design that increases the radius of



its rotating components, delivering 4.1 times greater inertia than Samsung's previous F3 compressor. This enhanced design allows for longer operation with less energy consumption, and its AI-powered algorithm dynamically adjusts the compressor speed for maximum efficiency.

Despite maintaining the same external dimensions, they offer an impressive 900-liter capacity, an increase of 25 liters over conventional models. The Peltier module replaces traditional heating elements, allowing for 60mm deeper shelves and a 13.8% larger loadable area, making room for up to 240 beverage cans—24 more than standard models.

Savant Systems, Inc., unveiled an impressive lineup of GE-branded lighting and shading solutions, along with the affordable Savant Smart Budget system, designed to help



homeowners electrify their homes without costly utility upgrades. Savant also introduced the Cync Smart Keypad Dimmer and Smart Paddle Dimmer, enhancing smart home lighting with intuitive scene control and broad dimming ranges. The GE's Proseo smart lighting and shades combine luxury aesthetics with energy-efficient performance. These products are available through Savant's network of installers, offering sleek solutions for high-end spaces.

Shelly Group unveiled its Gen4 Series at CES 2025, introducing a new era of smart home technology with multi-protocol support across Wi-Fi, Bluetooth, Zigbee, and Matter. Designed for flexibility and compatibility, the Gen4



Series enables users to seamlessly integrate and customize their smart home devices, offering secure and efficient connectivity across various ecosystems. The series features upgraded relays, switches, sensors, and plug-and-play modules, catering to diverse needs in modern homes, including lighting, appliance control, energy management, home safety, and environmental monitoring. With the latest Matter certification, the Gen4 Series also ensures seamless Apple HomeKit integration. Key products in the Gen4 Series include the Shelly Plug US Gen4, a next-gen smart plug that supports expanded protocols and controls appliances up to 1800W, with energy management features to reduce waste; the Shelly Flood Sensor Gen4, a wireless leak sensor for preventing water damage in high-risk areas like basements and plumbing; and the Shelly Wall Display X2, a 6.95-inch touchscreen control panel that integrates temperature, humidity, and light sensors for precise climate control and smart home automation.

Withings and **NuraLogix** have introduced groundbreaking telehealth diagnostic



products aimed at enhancing remote health monitoring and improving patient care, eliminating the need for in-person visits. The BeamO combines a thermometer, ECG, oximeter, and stethoscope into a single device, measuring blood oxygenation, heart rate, body temperature, and heart and lung sounds. These readings, which take less than a minute, provide insights into

potential conditions like fever, infections, and cardiovascular issues. Users can track their health over time through the Withings app, sharing data with physicians for continuous care and chronic condition management.

The NuraLogix has revolutionized health monitoring with its Anura MagicMirror, a smart 21.5-inch mirror that captures facial blood flow patterns through its built-in camera. Using NuraLogix's patented Transdermal Optical Imaging (TOI) technology and AI, the MagicMirror analyzes over 100 health parameters, providing instant readings of blood pressure, heart rate, BMI, and assessing health risks related to conditions such as diabetes, cardiovascular disease, and hypertension. The device also evaluates mental health risks, including anxiety and depression. With its cloud-based DeepAffex platform, the MagicMirror offers actionable insights that can be used across various sectors, including healthcare, wellness, retail, and more. This innovative tool is designed to streamline health assessments in multiple settings, from doctor's offices to corporate wellness programs.

Schlage introduced its latest innovation in smart home technology – the Schlage Sense Pro, a smart lock that promises to unlock your door only when you truly want it to. The Schlage Sense Pro is equipped with the ability to detect the speed, direction, and intent behind your approach. If you approach

the door with a sense of purpose—such as heading inside with groceries—the lock will unlock automatically. However, if you're merely lingering nearby, like watering plants on your porch, the lock will remain secure, preventing unnecessary unlocking.



The Schlage Sense Pro connects directly to Wi-Fi, eliminating the need for a separate hub unit. It can store up to 250 unique access codes and is compatible with Matter-over-Thread, allowing it to integrate seamlessly with other smart home devices. Paired with the updated Schlage Home app, users can easily manage settings such as auto-lock timers and access history, making the Sense Pro a highly customizable and reliable addition to any smart home setup.

SwitchBot unveiled its groundbreaking K20+ Pro, marking a major leap forward in household



robotics. This world-first multitasking robot combines a range of functions including all-around vacuuming, home security, air purification, and smart delivery, setting a new standard for home automation. Powered by the innovative FusionPlatform™, the K20+ Pro is capable of adapting to a variety of tasks, offering unparalleled convenience and functionality for modern households.

The K20+ Pro integrates a mini robot vacuum, a base station, and an adaptable mobile platform, which together create a versatile

household assistant. The FusionPlatform™, equipped with ClawLock™, allows the robot to seamlessly connect with other smart devices, further expanding its capabilities. The robot can carry small packages, monitor pets, purify air, and even mobilize smart tablets.

The K20+ Pro also introduces multiple specialized kits for specific needs. The Smart Delivery Assistant Kit enables the robot to carry items weighing up to 8 kg, making it perfect for daily chores like delivering food, drinks, or pet supplies. The K20+ Pro Patrol Kit includes a SwitchBot Pan/Tilt Cam Plus 2K or 3K, providing real-time home security with advanced motion detection and instant notifications.

TP-Link Systems Inc. unveiled an expanded range of smart home solutions and cutting-edge Wi-Fi 7 products. The new lineup includes innovative products such as palm recognition door locks, intelligent security cameras, robot vacuums, and intuitive smart lighting, all seamlessly integrated and managed via the Tapo app.



Tapo PalmKey Smart Door Lock enhances home security with palm vein recognition technology. This contactless system ensures reliable and secure entry, even when hands are wet, dry, or dirty, making it a game-changer in biometric security. The Tapo Atom-Link System, offers reliable, seamless control of home lighting using Wi-Fi and Bluetooth Mesh technology. TP-Link unveiled its Tapo NVR Security System, providing continuous 24/7 surveillance for homes and businesses. The Tapo C4086B and Tapo C6165D cameras offer exceptional low-light performance and dual-angle views, while the Ultra-Long-Distance Wireless SolarCam ensures stable connectivity, even in remote locations.

Tapo HybridCam Duo for expansive outdoor areas, the Tapo HybridCam Duo C675D KIT offers a dual-lens system with 4K resolution. Combining a fixed wide-angle lens and a pan/tilt lens, it provides detailed, long-distance surveillance, perfect for monitoring large properties such as yards or farms. This design eliminates blind spots and ensures complete coverage.

Wi-Fi 7 Travel Routers for those needing high-speed, secure connectivity on the go, TP-Link introduced the BE3600 Wi-Fi 7 Travel Router, offering speeds of up to 3.6 Gbps and robust



security features, ideal for remote work or travel. TP-Link's travel router lineup also includes the TL-WR3002X Wi-Fi 6 model, providing reliable connectivity in any situation, whether in hotels or on the road.

Valerion, the sister company of AWOL Vision, introduced VisionMaster Max projector, that boasts an impressive 3,000 ISO lumens of brightness, capable of projecting images ranging from 40 to 300 inches. With a



15,000:1 contrast ratio, it excels in brighter environments, delivering crisp and vibrant visuals. The projector covers the REC. 2020 colour standard, ensuring true-to-life color reproduction that aligns with filmmakers' intent. It also supports 1080p resolution with a 240Hz refresh rate and a minimal 4ms

input lag, making it a solid choice for gaming enthusiasts.

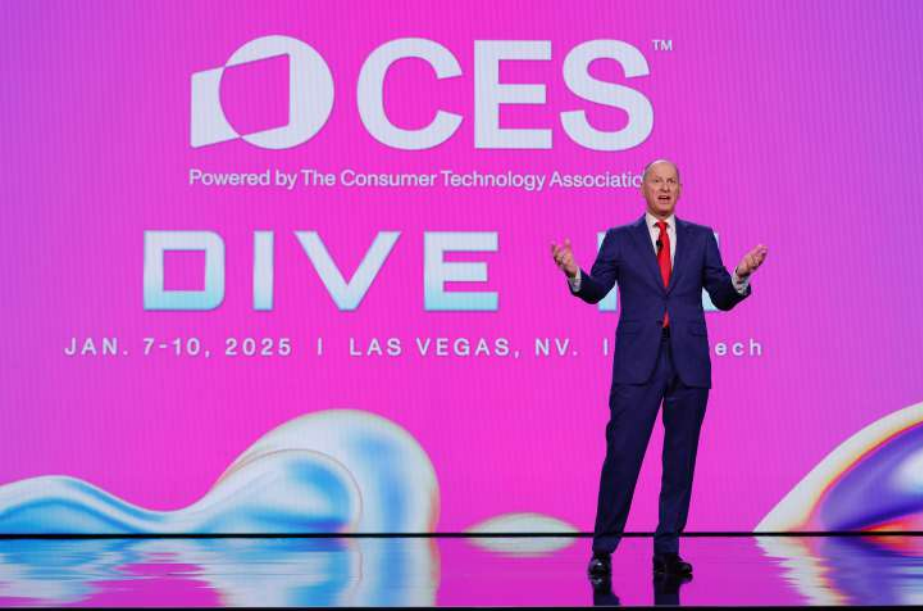
Additional features include Dynamic Tone Mapping, Enhanced Black Level mode for deeper blacks, FHD to 4K upscaling, and IMAX Enhanced and Filmmaker modes, all powered by the advanced MT9618 processor. The projector is compatible with Dolby Vision, HDR10+ HDR, and Active 3D, and offers audio support for Dolby Atmos, DTS, Dolby DAP, and DTS: Virtual X.

Equipped with built-in 12-watt speakers, the VisionMaster Max provides audio out of the box, though audiophiles are likely to opt for dedicated external speakers to complete their home theater experience. The projector also integrates seamlessly with a Control4 hub, providing users with a unified control system for their smart home environments.

The Z-Wave Alliance, showcased its latest Certified Z-Wave and Z-Wave Long Range (ZWLR) smart home devices, further advancing the integration and management of connected devices across homes. A highlight of the exhibition was the 2GIG Edge Security Panel, a cutting-edge home security and automation hub. Equipped with AI-powered facial recognition, this panel offers



secure, personalized access while maintaining privacy through local data processing. The ADT Base (S501R0-01) was also introduced, offering a sophisticated and versatile hub for home security and automation. With Z-Wave and ZWLR compatibility, the ADT Base integrates a wide range of smart devices, providing a reliable, tamper-resistant system. Its compact design blends into any home, and the system allows centralized control and remote access via the ADT+ app, providing users with complete peace of mind.



Another notable product was the Climax HSGW Gen2 Security Panel, which boosts wireless communication capabilities through the Z-Wave 700 series, improving range, security, and energy efficiency. This advanced panel features real-time monitoring, customizable alerts, and strong encryption, all accessible through a dedicated app for efficient control from anywhere.

The Control4 CORE 3 and CORE 5 home controllers with Z-Wave technology offer powerful and flexible automation solutions. These controllers, designed for medium to large systems, support a wide range of devices, including lighting, climate control, security, and entertainment equipment. The RISCO RisControlZW100 Touchscreen Keypad combines traditional keypad functionality with RISCO's smart home cloud-based solution.

This intuitive 8-inch touchscreen provides seamless control over alarm systems, smart devices, and live video feeds, enabling users to create custom automation scenes.

The SmartRent Alloy SmartHome Hub+ combines a smart thermostat and hub running on Z-Wave technology, simplifying home control into a single device. Pending ZWLR certification, the Hub+ ensures secure communication with compatible smart devices, offering a user-friendly interface to manage multiple devices.

Overall, this year CES 2025 the innovations launched this year are not only pushing the boundaries of what's possible, but also redefining how we live, work, and interact with the world.

ColorVu
TechnologyDarkFighter⁺
Technology

Hikvision Introduces 'See Vaster' Technology with Multi-Lens Cameras

Hikvision has unveiled its innovative 'See Vaster' technology, designed to enhance security surveillance with a unique multi-lens camera solution. This breakthrough allows users to monitor large areas, such as traffic intersections, warehouses, or parking lots, with a single camera that would typically require multiple devices.

Hikvision's solution simplifies this process by integrating two or more lenses into a single camera unit. This technology not only delivers panoramic views but also offers detailed, zoomed-in perspectives, all within the same device.

TandemVu Technology: A New Era in Surveillance

At the heart of this innovation is Hikvision's TandemVu technology, which combines multiple lenses in one unit to provide both broad coverage and detailed zoomed-in views simultaneously. Unlike conventional static cameras that capture fixed scenes with limited fields of view, or PTZ cameras that can lose sight of objects when zooming, TandemVu ensures continuous coverage with no blind spots.

The camera's design features a fixed upper lens for an overview of the area and a lower lens that can pan, tilt, and zoom for detailed

inspection. Users can monitor an entire scene while zooming in on specific incidents, all without sacrificing security. Additionally, the camera's two video channels allow for real-time, simultaneous viewing of both perspectives.

Cost Efficiency and Smart Integration

By integrating multiple lenses into one camera, the TandemVu system eliminates the need for additional units, cutting down on purchase costs, installation time, and ongoing maintenance. It also simplifies management, with only one IP address and license required for video management software.

The cameras' intelligent capabilities enhance security even further. When the panoramic lens detects an object, it triggers the PTZ lens to track the subject, a process known as Smart Linkage.

AI-Powered Surveillance

TandemVu cameras also support advanced AI features, including perimeter protection, facial recognition, ANPR, and traffic violation detection. Integrated with Hikvision's AR Live Interaction solution, these cameras offer enhanced visibility and situational awareness, making them a powerful tool for modern security operations.

DigiValet Integrates with Crestron to Enhance Guest Experiences



DigiValet, a global leader in experiential guest room solutions, announced that its hospitality solutions are now fully integrated with control systems from Crestron, a leader in automation technology. This powerful integration combines DigiValet's admired guest experience solutions with advanced control and automation products from Crestron, a company committed to delivering unparalleled experiences in the hospitality industry with reliable technology.

DigiValet's tablet-based guest room solutions are installed in thousands of guest rooms at some of the most iconic hotels across the globe, including Wynn Las Vegas, Raffles Singapore, Bulgari Paris, and St Regis Maldives.

DigiValet offers comprehensive guest engagement and control, including lighting, shading, HVAC, hospitality television (including

IPTV and OTT services), in-room dining ordering and PoS, housekeeping service requests through job dispatch systems, restaurant and spa reservation, and personalized messages and promotions.

Its hospitality dashboard empowers operations teams to customize the guest experience based on their loyalty status, VIP status, or group code. DigiValet's 360-degree analytics engine also provides insights about guest preferences and is one of the most important contributors to building a true CRM.

"DigiValet is committed to offering its customers best-in-class Guest Room Management Systems (GRMS) that are well integrated into its guest-facing solutions," says Rahul Salgia, Founder and CEO, DigiValet. "Partnering with Crestron allows us to join one of the most trusted names and deliver a highly reliable and widely supported guestroom solution."

"Providing a premium guest experience is essential in creating a memorable stay. This includes incorporating seamless in-room technology to maximize comfort, and the integration between DigiValet and Crestron helps bring those personalized control points to the next level," says Bob Bavolacco, Director of Technology Partnerships at Crestron. "Not only are guests benefitting from a better experience, but hotels also have an opportunity to use their solutions to help generate recurring revenue through repeat guest reservations."

URC and Sonos Announce Seamless Integration for Upscale Audio Experience

URC, a leader in global smart residential and commercial automation, and Sonos, the world-renowned sound experience brand, introduced a next-generation, seamless integration. Now users can enjoy unique audio

functionality and automation by integrating seamlessly with URC's Total Control solution.

Sonos is a global manufacturer of wireless music systems for the home, including



speakers, home theater components, and accessories. Its portfolio includes a variety of speakers, including the Sonos One, Beam, Move, Arc, and Era 100. Sonos also offers home theater speakers and components, including the Sub Mini. By integrating with URC's Total Control, Sonos adds unified user control and combines capabilities with other smart home and commercial environment areas like lighting, shades, climate, security, entertainment, and much more.

URC and Sonos created an initial integration in 2018 and this new integration significantly enhances the functionality of Sonos products within the URC Total Control system. It provides enhanced search functionality and allows end-users to save favorites and play preferred tracks faster. URC's Total Control includes voice control so users can simply ask for their favorite tracks with ease.

Combining these powerful brands offers seamless, unified control and automation for homeowners and streamlined programming for URC-certified dealers.

Unified Function – Users can use a single device through the Total Control system to control a broader range of devices, interfaces, and sub-systems, minimizing the number of other controllers, remotes, and devices.

Superior Choice – Both brands offer superior quality and ease of programming so installers

and end-users can enjoy unique automation without sacrifice.

Robust Scenes and Voice Events – URC's Total Control executes professionally programmed scenes and voice events, combining Sonos' impeccably-designed audio solutions with other devices and sub-systems to announce visitors, host epic parties, create movie night events, and much, much more.

Remote, Secure Dealer Access – Within a secure environment, this integration allows dealers remote access (with end-user approval) to troubleshoot, monitor, or adjust the Total Control system and configure the Sonos' integration.

With professional installation, Total Control allows this new integration to combine with customized scenes where multiple interior activities occur, like lighting, climate, shades, and more. Easy and convenient for the end-user, this integration adds to URC's user interfaces, like touch screens, remotes and in-wall keypads.

"This next generation integration with impeccably designed Sonos portfolio, creates unique opportunities for our dealers, with easy programming, and luxury consumers, with upscale audio design and superior technology. URC's Total Control continues to offer choice and reliable automation that unparalleled in the industry," stated Lars Granoe, URC's VP of Product Development.

FROM KEY TO KEYLESS

Dive into the world of smart security with our complete digital lock range—crafted for the future!



How would you like to **secure your home?**



Face



Palm



Fingerprint



Keypad



Card



Mobile
Access



OTP



Emergency
Key



Integrated Video
surveillance



WIFI
Enabled



amazon alexa



Google Assistant



EVERY DOOR DESERVES A **dorsët**



6th EDITION

International Exhibition
& Conference on
Smart Home Technology,
Home Automation, Audio -Video
& Intelligent Buildings



MUMBAI

8 • 9 • 10 MAY 2025

Jio WORLD CONVENTION CENTRE



BE A PART OF
**INDIA'S LARGEST SMART HOME
TECHNOLOGY EVENT**

REGISTER NOW

TITLE PARTNER	REGISTRATION & BADGE PARTNER	PLATINUM PARTNER	VISITOR BAG PARTNER	PLATINUM PARTNER	PREMIUM PARTNERS	PREMIUM PARTNERS	PREMIUM PARTNERS	PREMIUM PARTNERS	SMART LIFE PARTNER
HAVELLS									
PREMIUM PARTNERS									
TECHNOLOGY PARTNER	STRATEGIC PARTNER	KNOWLEDGE PARTNER	KNOWLEDGE PARTNER	SUPPORTING PARTNER	SUPPORTING PARTNER	MEDIA PARTNER			

EXHIBITION • NETWORKING • PRODUCT DEMO • CONFERENCE • TRAININGS

FOR BOOKINGS, PLEASE CONTACT:

Nazim Sawant +91 99304 26156 | nazim@smarthomeexpo.in

Monika Agnihotri +91 93210 24581 | monika@smarthomeexpo.in

Organised by:



messe frankfurt

www.smarthomeexpo.in