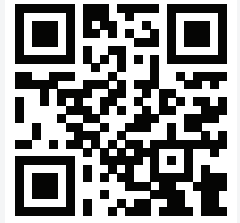


AN EXCLUSIVE MAGAZINE FOR THE SMART HOME INDUSTRY.

SMARTHOME™ WORLD

VOL 6 • NO 11
MARCH 2026

www.smarthomeworld.in



FOLLOW US ON



12 COVER STORY

Voice Control, AI Assistants & the Next Big Leap in Smart Homes

INSIDE



INTERVIEW

Sandeep Raghuram

Business Development Manager, Lutron, shares insight on Lutron's new Intelligent Lighting portfolio and more.

22



INTERVIEW

Anindya Mukherjee

Managing Director, Sonodyne Technologies, speaks about the brand's strategic partnership and new product launches.

29



INTERVIEW

Cédric Aubriot

Founder, Waterfall Audio, discusses the inspiration behind the glass speakers and their proprietary technologies.

32

CASE STUDY

Smart Homes Experience Centre in Pune invites you to explore a space where cutting-edge technology seamlessly blends with modern luxury.

37

SHOW PREVIEW

Smart Home Expo 2026 is just around the corner. Experience smart living firsthand with live demos from 450+ top brands.

46

PRODUCT PREVIEW

BenQ delivers premium home theatre experiences through 4K projectors.

54

smart home expo

MUMBAI

28 • 29 • 30 APRIL 2026

Jio WORLD CONVENTION CENTRE

India's Largest Smart Home Technology Trade Show



TITLE PARTNER HAYTEL	POWERED BY EMI	TECHNOLOGY PARTNER KNX	PLATINUM PARTNER SONOS	PLATINUM PARTNER Cinebels	PLATINUM PARTNER PRO F X	PLATINUM PARTNER MIANTIC AV	PLATINUM PARTNER VINSHEK	PLATINUM PARTNER SMATO	PLATINUM PARTNER CP PLUS	PLATINUM PARTNER CAVITAK	PLATINUM PARTNER KEJ
PREMIUM PARTNERS											
AERO	RTI	marantz	basalte	SM	benq	EPSON	Optoma	FOCAL	DEVIALET	Yale	raylogic
Klipsch	THEORY	LOEWE	Smart Node	Smee	Jorsët	SONY	CASADGI	Schneider	ORIGIN	GALLO	Genj
rako	Sonus faber	JBL	DIGILUX-AI	KF1X		SOUND & VISION	MDT	moorgen	EverGlow	JR	ELAN
LAFIT	Qquba	modo	OFFICIAL MEDIA PARTNER SMARTHOME WORLD	KNOWLEDGE PARTNERS				SUPPORTING PARTNERS			
				LIDAI	COQ	CEDIA	IALD	csa	WAVE		

REGISTER TO VISIT www.smarthomeexpo.in

EXHIBITION • NETWORKING • PRODUCT DEMO • CONFERENCE • TRAININGS

FOR BOOKINGS, PLEASE CONTACT:
 Monika Agnihotri +91 9321024581 | monika@smarthomeexpo.in
 Bankim Laher +91 8591277084 | bankim.laher@india.messefrankfurt.com

ORGANISED BY: **WME** WORLD MEDIA & EXHIBITION | **messe frankfurt**

Be smart about keeping your valuables safe



Smart Safes

We value it, We protect it



PIN Code



Yale Home

Yale Home Connectivity

Which belongings do you want to secure?



Jewellery



Watches



Important Documents



Passports



Smart Devices



Keys



Laptop



Camera

For more inquiries please
WhatsApp **6387 409 260**
Email: **Customer_Enquiry.India@assaabloy.com**



CONTENTS



12 Cover Story

This article explores how AI, Voice Control, and IoT are transforming home automation. Experts share key benefits, challenges, and real-world experience on integrating these technologies in their projects. They also share their insights on the futuristic outlook.

Conceived by Founders Pratik Singhal and Sankalp Goyal and designed by Amit Bhat, Principal Architect, AB Architects, the new Smart Homes Experience Centre in Pune offers firsthand experience on how lighting, home theatre, automation, and climate control come together to create intelligent living spaces.

22 Interviews

Sandeep Raghuram, Business Development Manager, Lutron, discusses Lutron's new Intelligent Lighting portfolio, advantages of combining Ketra and Orluna, and how the unified HomeWorks + Ketra platform, powered by Clear Connect Type X, streamlines the commissioning and management of lighting and shading.

Anindya Mukherjee, Managing Director, Sonodyne Technologies Pvt. Ltd., speaks about Sonodyne's strategic partnership with Pro FX, the flagship PRIVÉA home cinema range, and the brand's focus on delivering premium, immersive residential audio experiences.

Cedric Aubriot, Founder, Waterfall Audio, shares insights into the brand's journey of redefining high-end audio through a distinctive fusion of acoustic excellence and design innovation. He also discusses the inspiration behind the company's iconic glass speakers.

46 Show Preview

Smart Home Expo 2026 is bigger and better than ever, offering an immersive glimpse into the future of smart living. Visitors can explore live demos, hands-on automation, dedicated demo rooms, and fully integrated AV and lighting solutions, showcased by over 450 leading brands.

54 Product Previews

BenQ brings cinematic-quality home theatre to life with advanced 4K projectors, vibrant colours, and seamless smart home integration, transforming any space into a premium entertainment experience.

Lafit Lighting brings together design precision and advanced engineering. The brand has established itself as a trusted collaborator for architects, designers, and lighting professionals nationwide.

37 Case Studies

Ar. Akshay Selukar collaborated with SI Pratik Awasthi, Founder, Autozon, to design a contemporary smart residence that seamlessly integrates modern architecture, heritage, and smart home technology.

61 News

New product launches and technically upgraded solutions across home automation, smart lighting, AV systems, home theatres, and more.



Seamless Streaming & Endless Entertainment

Your All in One Projector for Epic Movies, Thrilling Sports & Immersive Gameplay



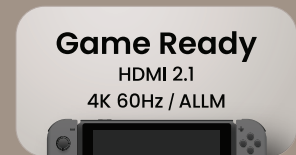
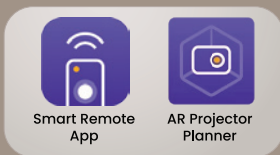
TK705i / TK705STi

Home Entertainment Projectors



Smart Image Adaptation

- Auto 2D Keystone
- Auto Focus in Seconds
- Auto Cinema Mode
- Digital Zoom
- Auto Screen Fit
- Auto Obstacle Avoidance
- Digital Shift
- Auto Eye Protection



Corporate Office: BenQ India Pvt. Ltd.
 9B Building, IIIrd Floor, DLF Cyber City, DLF Phase III, Gurgaon, Haryana, India - 122002
 Tel: +91 124-450 1400, Fax: +91 124-450 1400
www.BenQ.in | sales.enquiryin@BenQ.com | 1800 419 9979

TK705i & TK705STi comes with 3-years on-site warranty.
 The LED light source is also covered by a warranty of 3 years or 5,000 hours whichever is earlier.



SWATI BALGI

FROM THE EDITOR

This issue brings together some of the most compelling ideas shaping smart living today, beginning with our cover story on how AI, Voice Control, and IoT are redefining home automation. Experts share real-world insights, key challenges, and their perspective on what the future holds.

We also sit down with industry experts like Sandeep Raghuram, who talks about Lutron's evolving lighting ecosystem, Anindya Mukherjee, who shares insights on Sonodyne's partnership with Pro FX and its premium home cinema approach, and Cedric Aubriot, who reflects on blending design with high-end audio through Waterfall's iconic glass speakers.

On the projects front, we feature a thoughtfully designed smart residence by Akshay Selukar and Pratik Awasthi, along with a new Smart Homes Experience Centre in Pune by Pratik Singhal, Sankalp Goyal, which is designed by Ar. Amit Bhat, which offers a hands-on look at integrated living.

With **Smart Home Expo 2026** around the corner, excitement is building for what promises to be a bigger, more immersive showcase of smart technologies, from live demos to full-scale experience zones. We have a preview for the readers.

We also highlight product innovations from BenQ and Lafit Lighting, along with the latest updates from across the smart home and AV industry.

Enjoy reading and stay updated.

SMARTHOMETM WORLD

FOLLOW US ON



Chief Editor:

Swati Balgi
swati@smarthomeworld.in

Assistant Manager - Sales:

Monika Agnihotri
monika@smarhomeexpo.in

Marketing Head:

Sandeep Singh
sandeep@smarthomeworld.in

Tech Journalist:

Sunny Sawant
sunny@smarthomeworld.in

For More Information Contact Us:

+91 81690 58048



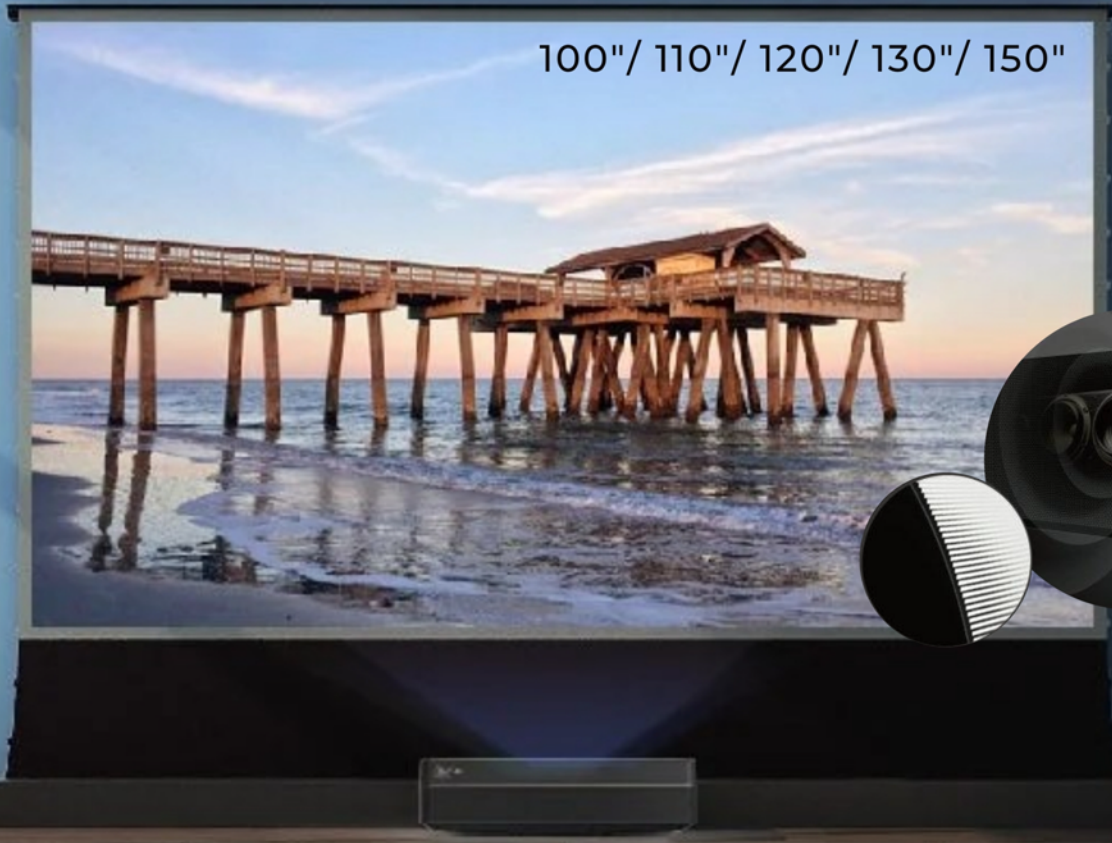
Published by:

WORLD MEDIA & EXPO LLP.

Ecostar, 603, Vishveshwar Nagar Road, Churi Wadi, Goregaon (East)
Mumbai, Maharashtra 400063

Smart Home World thanks the various companies that have submitted information. For any editorial submissions, please contact Ms. Swati Balgi, Chief Editor: swati@smarthomeworld.in. The information published in News, Ongoing Trends and Product Gallery is as per the details furnished by the respective manufacturer/distributor. It does not reflect the views of Smart Home World or of the management of WORLD MEDIA & EXPO LLP.

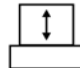





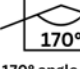

**S PRO P PLUS (MOTORIZED TENSION FLOOR RISING SCREEN)
MADE FOR ULTRA SHORT THROW LASER PROJECTOR**



100"/ 110"/ 120"/ 130"/ 150"



New Projection mode, excellent anti light effect

- 
Electric lift
Easy to open
- 
Wireless remote control
- 
Blocking ambient light
- 
High contrast
Highly restored color
- 
Eye protection technology
- 
100" - 150"
More size options
- 
170° angle of view
Wide range of views
- 
Brand motor
Silent drive

FOR MORE DETAILS PLEASE CONTACT US

Email: hello@aytexcel.com
 Mob: +91 9820022205 / +91 9920023881
 Add: 1101 Esperanza, 198 Linking Road, Bandra West, Mumbai 400050.



ALL INDIA SERVICE CENTRE IN MUMBAI

www.aytexcel.com



Scan here to visit our site.

DEMO AVAILABLE HERE AND AT MANY EXPERIENCE CENTRES ACROSS INDIA.

Beesound Bollard

The authentic B&O experience. Outside.



Bang & Olufsen and Origin Acoustics combines our world-renowned expertise in acoustics & outdoor speakers, to bring outdoor sound to the world of music lovers.

BANG & OLUFSEN | ORIGIN ACOUSTICS

- 360-degree immersive sound performance
- Acoustical tuning by Bang & Olufsen
- 3 colors - 2 shapes
- DSP - full matrix DSP embedded
- S/P DIF link to multiple amps
- Class D technology



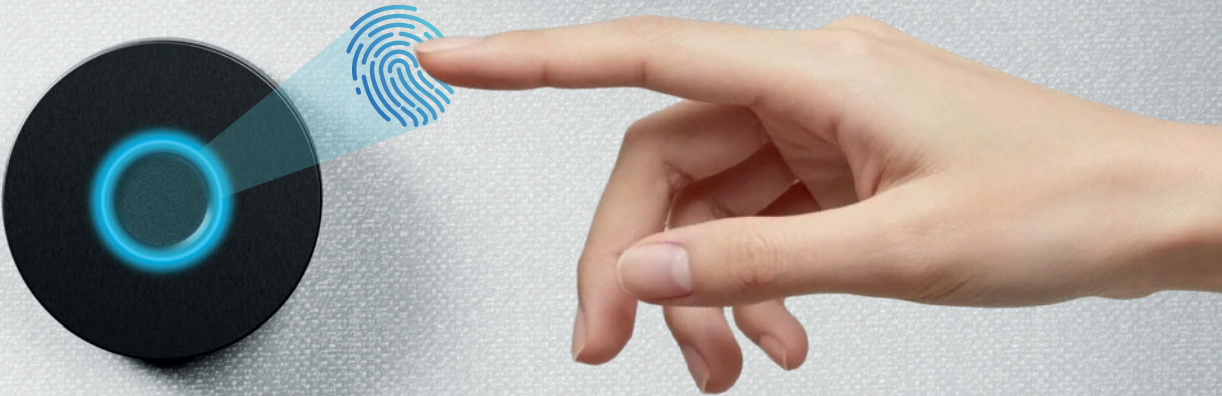
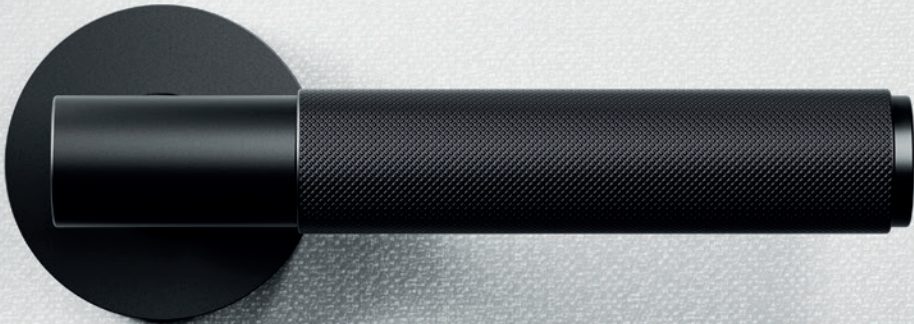
EVERY DOOR DESERVES A

dorsët

MORE SAFE. MORE SECURE.



WORLD'S FIRST CUSTOMIZABLE DIGITAL LOCK



F-LUX



360°
Fingerprint



Bluetooth



Key



Mobile
Access



Audit
Trail



Free
Installation

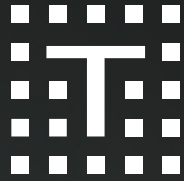
6+ Handle Designs & 5+ Finishes

SCAN



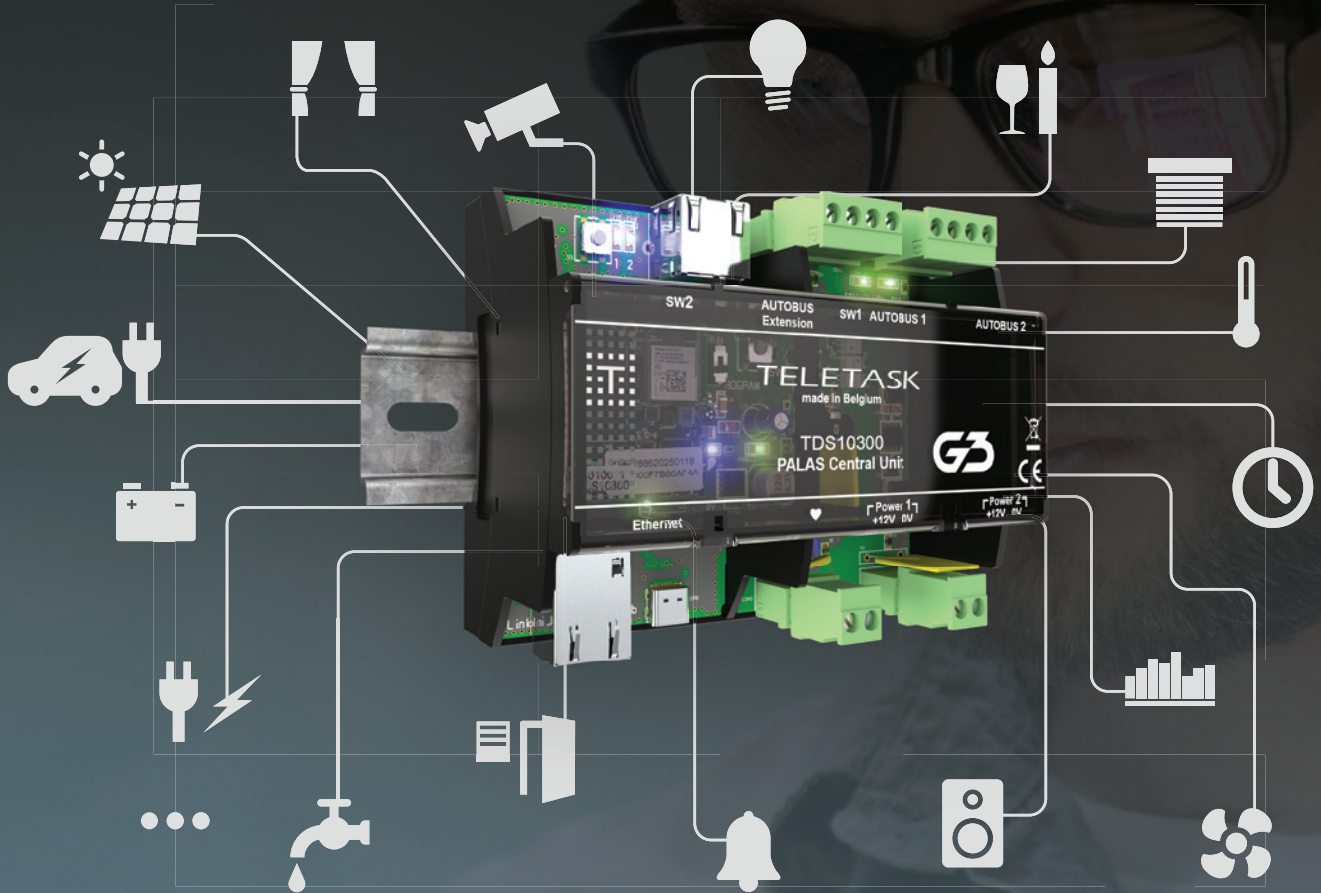
Follow us on:

Dorset India



TELETASK

trendsetter in home automation



ONE-STOP HOME AUTOMATION SOLUTION

One manufacturer. One ecosystem. Endless possibilities.



TELETASK INDIA:

Unit No. 202, 2nd Floor,
Ashoka Vishnu Capitol,
Plot No.90, Road No.2,
Banjara Hills
500034 Hyderabad
www.teletask.in
(+91) 99489 10465



visit us at
SmartHome
Expo 2026
Booth **C47**



Become a certified partner or visit our showrooms in Hyderabad, Mumbai, Goa, Pune and the rest of the world.

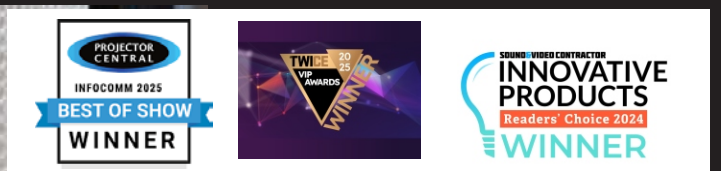
Golf Anywhere. Play Everywhere.

GolfSlim Portable ImpactWhite 350 Series Screens

Take your golf anywhere with the GolfSlim Portable ImpactWhite 350. Designed for ultimate flexibility, this lightweight, folding aluminium enclosure is perfect for home setups or on-the-go golf simulation.. A compact, traveler-friendly carrying bag ensures easy storage and effortless portability wherever you play.



THE RIGHT SCREEN MAKES ALL THE DIFFERENCE



Elite Screens is home to the most award winning products in the world.

Globally trusted. In India, our growth is built with 1000+ home theatre partners.

Elite Screens is one of the world's largest projection screen brands, delivering high-quality projection screens globally with advanced manufacturing facilities across China, India, Taiwan and Vietnam.



GET THE BIG PICTURE

Vision works | 2nd cross | Plot No. 39
Codissia Industrial Park

Kallapalayam | Coimbatore 641201

Mob: 9487758161 Tel: 0422 7141699

www.elitescreens.com | www.elitescreensindia.com

Email: india@elitescreens.com

YOUR PROJECTION SCREEN COMPANY



Voice Control, AI Assistants, and the Future of Automated Home

Are smart homes ready for the next leap? With AI, Voice Control, and IoT at the forefront, this feature explores how home automation is becoming more intuitive, predictive, and deeply integrated into everyday life.

At industry conferences and smart home seminars, one message is becoming increasingly clear: Voice Control, AI Assistants are no longer just futuristic gadgets, but they are becoming the backbone of modern home automation. What was once a novelty has evolved into central infrastructure, capable of orchestrating lighting, climate, security, entertainment, and other connected devices with a single command.

Yet, the question remains whether homeowners are truly prepared to leverage the full potential of AI, Natural Language Processing (NLP), and interconnected IoT ecosystems? While many are familiar with Voice Commands, the next step involves systems that anticipate behaviour, learn routines, and dynamically adjust environments. Achieving this level of automation requires seamless integration of multiple devices, standardised



communication protocols, and intelligent algorithms capable of handling complex interactions, all in real time.

The adoption of such predictive, intelligent solutions will not only redefine convenience and comfort but also set new standards for energy efficiency, accessibility, and security. As the technology matures, smart home owners are being invited to move from passive control to fully immersive, AI-driven living experiences, where the home does more than respond; it thinks ahead.

System Architecture and Device Integration

Modern smart homes rely on integrated ecosystems where multiple devices communicate through standardised protocols like Wi-Fi, Zigbee, Z-Wave, and emerging



frameworks such as Matter. Cross-platform interoperability allows devices from different manufacturers to work together seamlessly. Voice assistants act as centralised hubs, orchestrating commands and routines across distributed devices.



Automation workflows are increasingly complex, spanning multiple devices and environmental parameters. For example, a “Good Morning” routine may involve gradually increasing light intensity, adjusting temperature based on occupancy data, and playing curated audio content—all triggered through a single voice command.

Applications Beyond Convenience

Voice-enabled automation enhances energy efficiency, accessibility, and security. Smart systems can manage power consumption dynamically, detect occupancy patterns, and optimise HVAC and lighting schedules. For differently-abled users, voice commands provide a critical interface for independent control of the home environment. Security systems integrated with AI can identify unusual activity, alert homeowners, and

trigger automated responses in real time.

High-definition streaming, immersive audio, and multi-room media distribution are increasingly managed via voice control. AI algorithms coordinate device performance, adjust audio calibration, and ensure synchronised playback across multiple zones.

Challenges in Implementation

Technical challenges remain. Privacy and data security are paramount, given continuous voice data collection and cloud processing. Network latency, device compatibility, and robustness of NLP models affect reliability. Misinterpretation of commands can compromise usability, highlighting the need for continuous refinement of AI models, local processing options, and standardised interoperability frameworks.

Smart Home World spoke to System Integrators to know how AI, NLP, IoT, and Voice Controlled automation are transforming connected homes into intelligent, adaptive living spaces.



Bhavesh Doshi

KNX Tutor, IGBC AP, LEED GA, Cedia CIT / IST / RNS, Casambi 4C - Founder of Entelechy Group of Companies.

How are Voice Control and AI assistants transforming the way homeowners interact with automated systems, and how significant is this shift for the smart home industry?

Voice Control and AI are driving a monumental shift from “Reactive Automation” to “Agentic AI.” Historically, homeowners had to issue specific commands (e.g., “Turn on the AC”). Today, AI assistants act as autonomous, goal-oriented partners that perceive their environment and take multi-step actions without human intervention.

For the smart home industry, this is significant because AI has evolved from a passive listener to an active consultant that informs and suggests operations based on real-time data. Indian homeowners are increasingly demanding wellness and sustainability, and AI is delivering this through advanced sensor integration:

- **Health, Wearables, & Wellness:** The most profound transformation is the integration of personal biometrics. By securely pairing with the user’s smartwatches or health bands, the home’s central system can monitor real-time vitals like heart rate, blood pressure, and sleep cycles. If the AI detects elevated stress levels or a spike in blood pressure after a long workday, it acts as a proactive wellness agent. It might announce: “Your heart rate

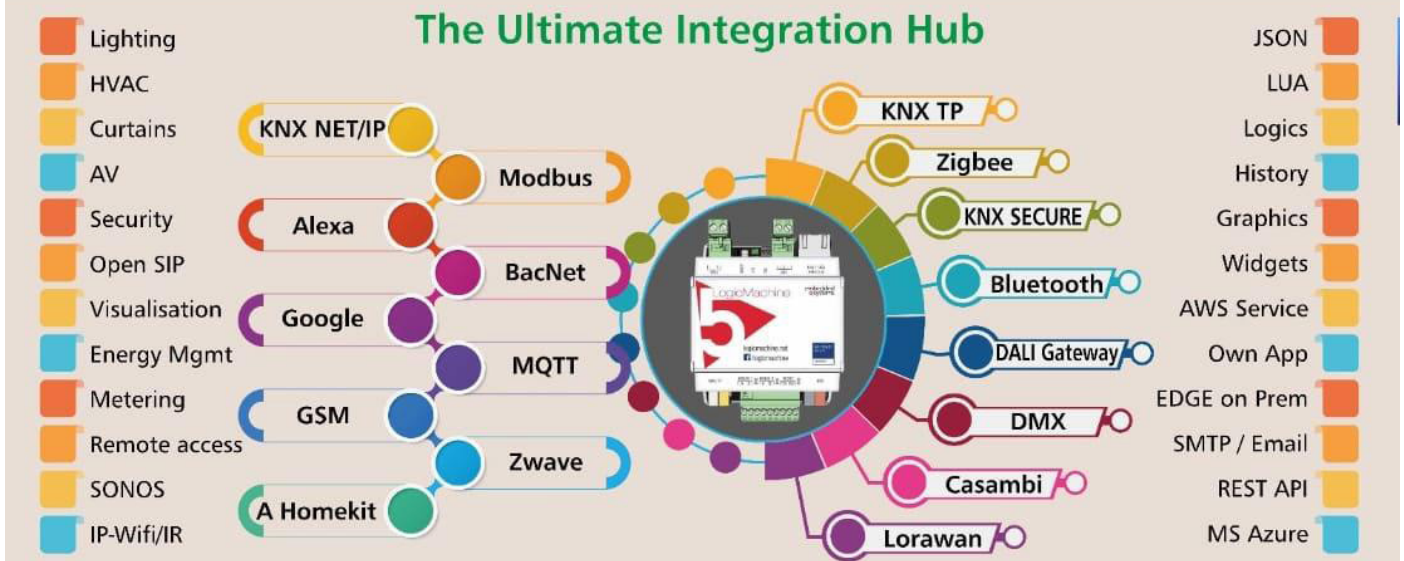
indicates elevated stress. I have activated ‘Decompression Mode’—dimming the lights to a warm circadian amber, lowering the AC to your preferred comfort level, and queuing acoustic relaxation music.”

- **Security & Weather:** The AI monitors live weather feeds and home sensors, proactively suggesting: “It is starting to rain, and the first-floor balcony window is open, close the window?”
- **Advanced Ambient Monitoring:** Using continuous Air Quality (AQI) sensors (CO_2 , VOCs, PM2.5), the system acts as a passive health guardian, automatically triggering fresh air intake to maintain cognitive health. We are even integrating ambient fall-detection radar in bathrooms for the elderly, and alcohol-monitoring sensors in garage interfaces to ensure safety before a user attempts to drive.

What are the biggest challenges System Integrators face when implementing voice-controlled automation across multiple devices and platforms?

The primary challenge is fragmentation. While small apartments can rely on DIY, off-the-shelf ecosystems (basic Wi-Fi gadgets and standalone smart speakers), large Indian luxury homes and villas present a vastly different reality. Integrators are dealing with multi-zone VRV/VRF air conditioning, complex architectural lighting, and distributed AV matrices.

Furthermore, modern appliances (ACs, refrigerators, washing machines) are incredibly “smart” and IoT-enabled, but they exist in isolated silos, each demanding its own App and cloud connection. The integrator’s challenge is breaking down these silos using a Multi-Protocol Integration Hub, like the LogicMachine 5 (LM5). The LM5 acts as a universal translator, bridging heavy industrial standards (KNX TP, BACnet, Modbus) with lightweight IoT protocols (MQTT, JSON) into a single pane of glass.



Delivering this requires a massive shift in integrator skillsets. Upskilling in IT/OT (Information Technology/Operational Technology) convergence is no longer optional. Integrators must master IP networking, cybersecurity, API integrations, and custom logic scripting to ensure a robust, uninterrupted system across a massive concrete-and-brick footprint.

Do you see Voice Control becoming the primary interface for smart homes, or will it continue to complement traditional controls such as switches, apps, and touch panels?

Voice Control is an incredible convenience, but it will absolutely complement, rather than replace, traditional controls. This is largely driven by stringent privacy demands. Standard “always-listening” cloud assistants are increasingly viewed as privacy risks, besides operational latency, in ultra-high-net-worth Indian households.

The future lies in In-App and Edge-Based Voice Control. By leveraging the local “EDGE on Premise” capabilities of advanced controllers like the LogicMachine 5, voice processing happens locally and securely. The microphone is only active when the user explicitly engages a secure touch panel or a dedicated smartphone app. Furthermore, tactile interfaces remain necessary for precision control; you do not want to use your voice to subtly dim a light to 15% during a movie or navigate a home quietly

at 2:00 AM. More discrete functions would need manual controls.

How are advancements in AI and natural language processing expected to shape the next generation of automated homes?

Advancements in Natural Language Processing (NLP) are solving the unique complexities of the Indian demographic—specifically, the multi-lingual, multi-generational household. Localised NLP models now understand code-switching (like “Hinglish”) and regional dialects, meaning a grandparent’s command in Hindi is processed just as effortlessly as a complex English routine. Coupled with Voice Biometrics, the AI can identify who is speaking, granting access control (e.g., unlocking a door) only to authorised family members while denying it to guests or children.

Furthermore, AI is driving the sustainable and energy-efficient solutions that today’s aware consumers demand through intelligent data synthesis:

Active Energy Monitoring: Instead of just providing a monthly bill, the system analyses the real-time energy consumption of heavy loads like VRV HVACs and water boilers. The AI assistant proactively informs the user to prevent waste, suggesting: “Your living room AC has been running at maximum capacity for three hours while the room is unoccupied; shall I switch it to eco-mode?”

Sensor Fusion: This efficiency is bolstered by combining technologies. A single high-resolution mmWave sensor acts as an occupancy detector to instantly power down heavy AV or lighting loads in empty rooms, while seamlessly doubling as a highly accurate intrusion detection grid when the house is armed for security.

The Art of Invisible Complexity

Ultimately, the next generation of automated homes will be defined by “invisible complexity.”

While the backend architecture is undeniably intricate—heavily driven by IT/IoT convergence, edge computing, and multi-protocol hubs—the end result for the homeowner is exactly the opposite. By designing systems based on open global standards, we deliver solutions that are cost-effective, highly flexible, and continually software-upgradable. Despite the massive computational power operating behind the scenes, the final system remains exceptionally simple to use, cost-effective, interacting with the user in a natural, robust, and intuitive manner.



Maulik Unadkat
Founder, Beyond Alliance

How are Voice Control and AI assistants transforming the way homeowners interact with automated systems, and how significant is this shift for the smart home industry?

Of all the voice control platforms, the one that we personally love the most is Apple Home. When Apple intelligence takes over, its Artificial Intelligence helps the home acclimatise to the presence and absence of each user. When someone arrives, what must happen and when someone leaves, what must happen. During the day, how must the home reach to someone's presence or absence and during the night, how must the home behave? At sunrise and sunset and in peak hours of the east-west sun rays, how must the sheer and blackout curtains behave? All this can be orchestrated to resonate with the preferences of the homeowners.

Siri no longer needs voice command speakers placed throughout the house. A simple click on the side button of the iPhone takes the

voice command even without the greeting ‘Hey Siri’. Also, what's most challenging for most voice users is to memorise the names of each voice command. Apple Home App helps users change these names as quickly as they change the name of any folder on the home screen.

What are the biggest challenges System Integrators face when implementing voice-controlled automation across multiple devices and platforms?

The main challenge is that all homes have a mixed bag of Android and Apple users. The most significant players in voice control, i.e., Amazon, Google and Apple, all have their own signature way of functioning. To ensure a smooth experience for such diverse users across different platforms using the same backend system is challenging for any integrator. For example, Apple Music would integrate best with Apple HomeKit and an iPhone user, while Android users would be using Spotify YouTube Music or Amazon Music as their primary choice. But the voice control must work for all these ecosystems equally well.

Do you see Voice Control becoming the primary interface for smart homes, or will it continue to complement traditional controls such as switches, apps, and touch panels?

The uniqueness of how each human being thinks, acts and behaves will continue to allow all these forms of controls to co-exist. Diversity of personalities in each home will demand different preferences for control. In face the



same user may prefer different forms of controls at different times. In the middle of the night, one may prefer a keypad. In wet areas like the kitchen and washrooms, one may prefer voice commands. Apps are extremely essential when one wants detailed control or configuration of scenes, etc. Each control complements the other and will continue to co-exist is what we feel.

How are advancements in AI and natural language processing expected to shape the next generation of automated homes?

Thanks to the translation intelligence of

all search engines and AI platforms, voice commands natively adapt to any language of choice without any additional programming effort. As integrators, we no longer need to feed these commands into the processors.

AI is learning human behaviour at the speed of light. If it can drive cars on its own, I am sure it can learn how to operate simple utilities of a home like ours. Exciting times lie ahead as we reap the benefits of R&D done across industries for decades. Kudos to each engineer who has worked on making lifestyle integrated into home automation experiences.



Ganesh Vudutha
Co-Founder & CEO, EDOMOTICS

How are Voice Control and AI assistants transforming the way homeowners interact with automated systems, and how significant is this shift for the smart home industry?

Voice control and AI assistants are reshaping smart homes by making interactions more natural, hands-free, and personalised, but challenges in integration, latency, and reliability mean they will complement rather than fully replace traditional controls in the near future. Hospitals, Elder Care Homes and Assisted living facilities could really benefit from voice control and AI by making automation more accessible.

What are the biggest challenges System Integrators face when implementing voice-controlled automation across multiple devices and platforms?

Devices from different brands often use proprietary protocols, making seamless integration difficult. Integrating multiple

devices across platforms requires a robust architecture and ongoing updates.

India, being a nation with numerous languages, dialects and accents, makes natural language processing complex; misinterpretations can erode trust in automation. Even sub-second delays in speech recognition or command execution can frustrate users.

Do you see voice control becoming the primary interface for smart homes, or will it continue to complement traditional controls such as switches, apps, and touch panels?

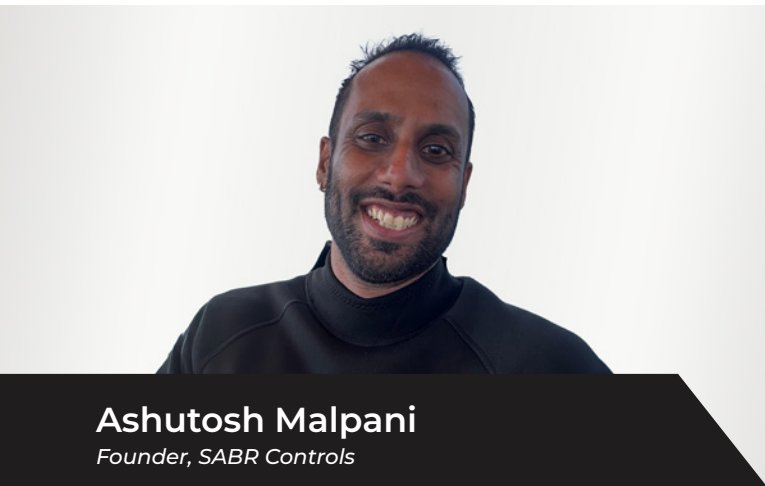
Though it seems intuitive and hands-free, I don't think Voice Control will fully replace switches, apps, or touch panels. Instead, it will complement them, offering flexibility depending on context.

The tactile feedback and reliability of switches and touch panels will be the primary way to control automation, at least for the foreseeable future.

How are advancements in AI and natural language processing expected to shape the next generation of automated homes?

Contextual communication, rather than exact commands, will make the usage much more conversational rather than transactional. AI-based adaptive learning offering personalised suggestions will make a real difference in the way we use automation. Accurate native language processing and faster response, without depending on a cloud server, could prove to be a game-changer.





Ashutosh Malpani

Founder, SABR Controls

How are Voice Control and AI assistants transforming the way homeowners interact with automated systems, and how significant is this shift for the smart home industry?

In my opinion, AI in automation is currently largely linked to voice controls for a home automation system at this point, wherein a voice-controlled AI assistant can manage everything from controlling your lights, curtains, cooling/heating systems, audio video systems, as well as managing schedules all through simple voice commands. However, eventually, one would expect AI to also learn from behavioural patterns of a user to streamline and automatically adjust to the user's routines and needs through various algorithms of the system. This would entail the use of:

- Smart Thermostats that would learn and adjust to how one uses their cooling/heating systems on a daily basis
- Intelligent Lighting Systems are also

adapting to how one typically uses their lights on a daily basis

- Intelligent Security Systems, which would learn and recognise the faces of regular visitors to specific areas, to enable a more robust level of alerts for any suspicious/unusual activity and be less prone to false alarms
- Smart Appliances – Refrigerators, Ovens, Washing Machines, etc., to monitor and alert the user about their daily chores and requirements of groceries, etc.

Therefore, the initial system design would require all the requisite components (with an initial manual programming of scenes and schedules within the system) to be able to gather enough data over a period of time. This should then allow the system to automatically modify existing/create new schedules and scenes based on the user's needs and patterns whilst also optimising energy consumption.

At this time, I personally feel the shift to AI being a part of the home automation system is still in very nascent stages, apart from voice controls, which have been around for a few years now, so at this point, the shift is not significant.

What are the biggest challenges System Integrators face when implementing voice-controlled automation across multiple devices and platforms?

I feel the biggest challenges faced are not in implementing multiple devices across platforms, but in remembering the nomenclature to trigger various commands,

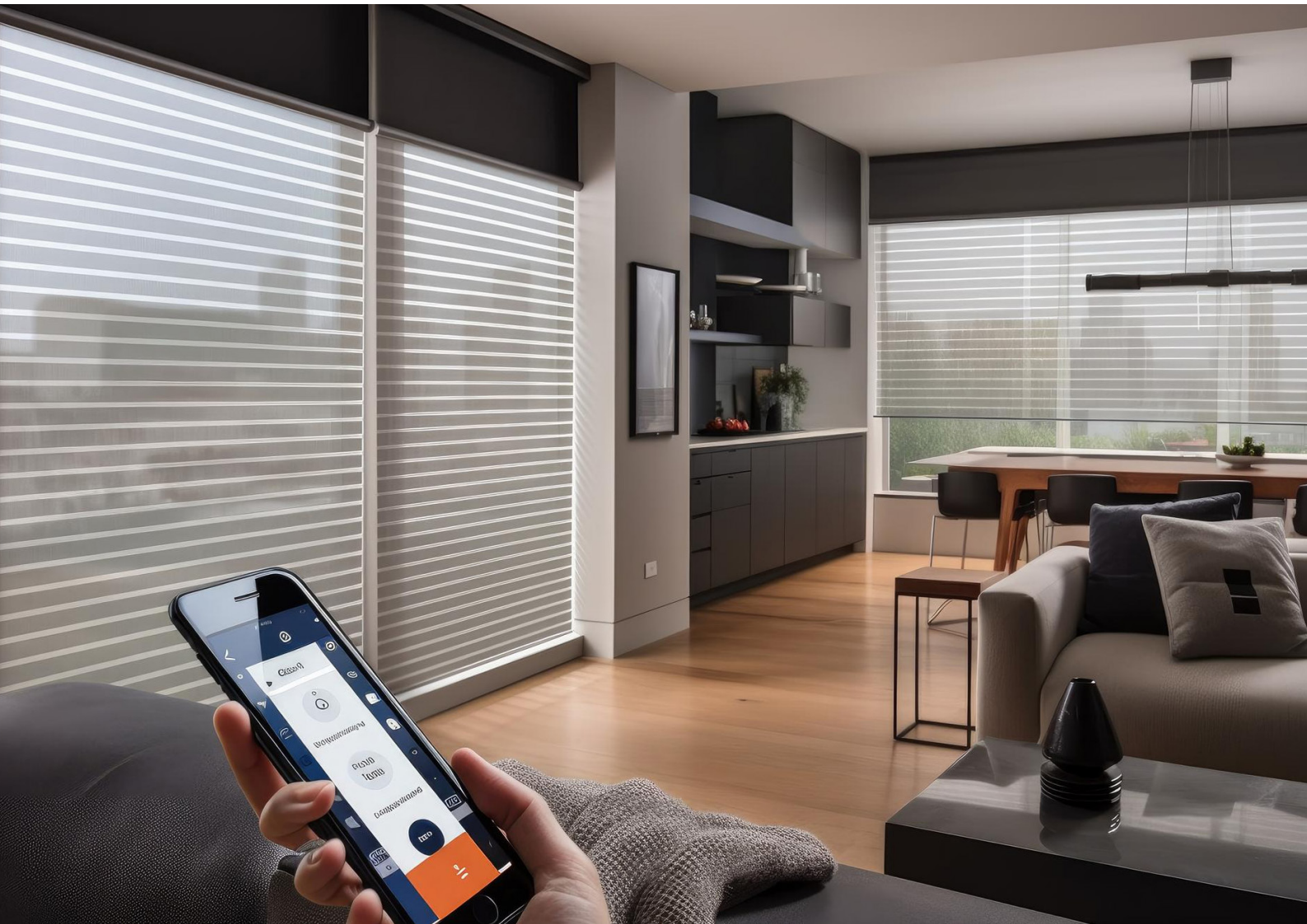


as a large house can have a long list to be remembered and the issue with voice control is one would need to remember each command exactly as per the programming.

Do you see Voice Control becoming the primary interface for smart homes, or will it continue to complement traditional controls such as switches, apps, and touch panels?

Personally, I don't see voice control becoming the primary interface for smart homes, especially not in India, where most of the homes spending money on these systems

are largely operated by staff members. Apart from that, a lot of people still live in joint families and have elderly and children in their homes. Hence, we would always need to have traditional controls as the primary interface for controls. Apart from that, I personally see a fundamental issue of remembering the exact nomenclature for each scene or operation one would want to trigger via voice controls and for a large house becomes nearly impossible. Some basic scenes and operations, of course, can be remembered, but to remember these in entirety is would be nearly impossible.



In conclusion, backed by expert insights, the smart home is on the brink of a powerful transformation, with AI, voice control, and connected ecosystems making homes more intuitive and responsive; yet challenges like privacy, security, and cost remain. So, are we ready to embrace this shift, or will we wait and watch as it gradually unfolds?

“Ketra Offers the World’s Most Advanced Tunable Light, Adapting to Every Mood While Mirroring the Natural Beauty of Daylight.”



Sandeep Raghuram

*Business Development Manager,
Lutron*

Sandeep Raghuram shares insights on Lutron’s new Intelligent Lighting portfolio, illustrating how it elevates luxury homes through human-centric design, wireless control, and seamless integration for both homeowners and integrators. He also highlights the advantages of combining Ketra and Orlluna, and how the unified HomeWorks + Ketra platform, powered by Clear Connect Type X, streamlines the commissioning and management of lighting and shading.

Tell us about Lutron’s new Intelligent Lighting portfolio launched at ISE 2026.

Intelligent Lighting is the next chapter in luxury residential lighting design. Our launch at ISE 2026 represents a fully realised vision of seamlessly integrated, deeply experiential lighting for the home, elevated by advanced wireless control that can transform design freedom.

Intelligent Lighting provides colour-consistent light inspired by the sun, directly in the home environment. It allows professionals to deliver human-centric lighting experiences into the home, offering the user unifying control of natural light, electric light, and the systems that harmonise them.

The portfolio introduces two complementary product families: Ketra, and Orlluna. Ketra is

the world’s most innovative light source with over 70 patents, and Orlluna, is our brand for intelligent and sustainably made architectural luminaires.

From an integrator’s perspective, what are the key advantages that intelligent lighting systems from Lutron offer in terms of design flexibility, commissioning, and long-term performance?

Our Intelligent Lighting Systems give integrators three clear advantages: greater design freedom, simplified installation and commissioning, and long-term reliability.

Because each fixture is individually addressable and offers native wireless control, integrators can create per-fixture scenes, reassign zones, and accommodate late design changes without rewiring, which allows the



integrator an exceptional level of fixture-to-
fixture consistency and design flexibility for
luxury, high-end projects.

Installation and commissioning are faster and
cleaner due to the elimination of control wiring
and centralised panels. Fewer components
are needed as line voltage is all that's required,
which additionally reduces coordination
across contractors. Since the intelligence
resides within the fixture itself instead of the
control wire, system setup and configuration
are faster, and re-zoning can be effortlessly
achieved. Eliminating control wire also frees
up significant rack room installation space,
which can be re-purposed for other client
uses, such as, wine cellars, extra storage, etc.

Over the last 30 years, we've refined our
wireless technology so that fixtures and
controls are engineered to work seamlessly



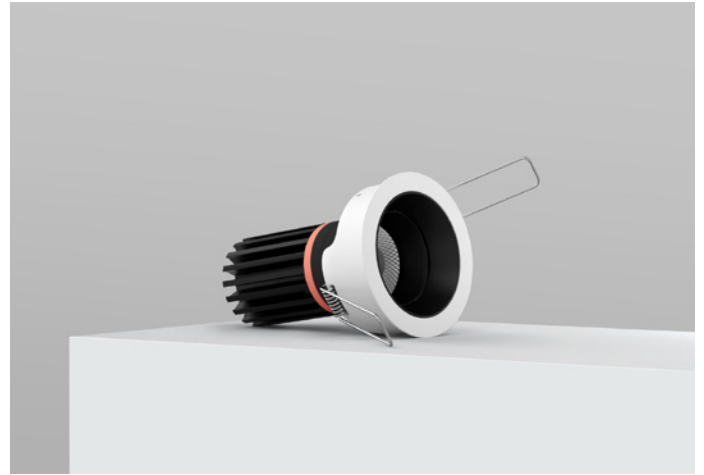
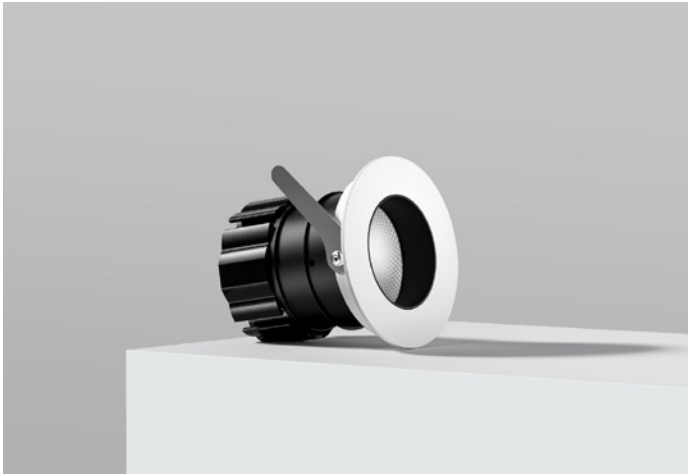
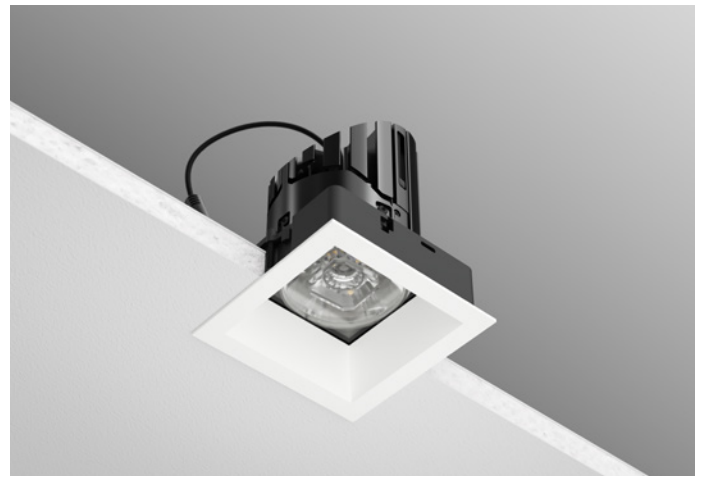
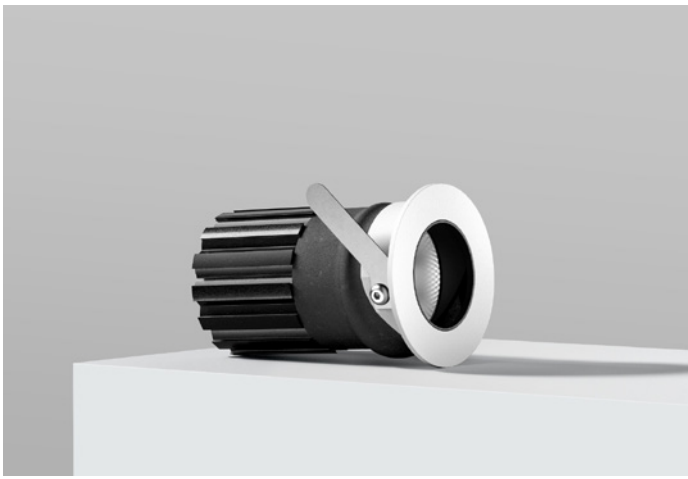
Ketra and Orluna each bring unique strengths to Lutron's luxury lighting portfolio, and when applied together can create a powerful, fully integrated offering.

Ketra delivers the world's most advanced and innovative tunable light source that can adapt to suit every mood, moment and is designed to mirror the beauty and dynamism of natural daylight. Its ability to shift seamlessly in colour, temperature, and intensity allows light to adapt to the homeowner's activities throughout the day. With industry-leading colour consistency, precision control and full integration into Lutron's Intelligent Systems, Ketra allows designers and integrators to craft immersive, emotionally layered, elevated environments.

Orluna was acquired by Lutron in June 2025 and began the foundation of intelligent lighting, offering masterfully engineered decorative and architectural luminaires with uncompromising quality and perfect colour consistency across every layer of light. Known for its meticulous optical engineering and unwavering colour fidelity, Orluna ensures

together, delivering consistent colour, smooth dimming and dependable performance. This gives integrators confidence that the systems they deliver remain reliable and visually cohesive long after installation.

Could you give us an overview of Ketra and Orluna, and how their respective offerings complement Lutron's broader luxury lighting ecosystem?



that layers of light blend within the home's aesthetic. Now fully integrated into Lutron's Intelligent Systems, Orluna offers a versatile, individually addressable lighting platform that simplifies the installation process, enables quick and easy scene creation, and empowers a new level of creative freedom.

The new Intelligent Lighting products from Lutron complement the existing, broader luxury lighting proposition, allowing harmonious integration of natural light replication and architecturally brilliant lighting to be unified by one human-centric control.

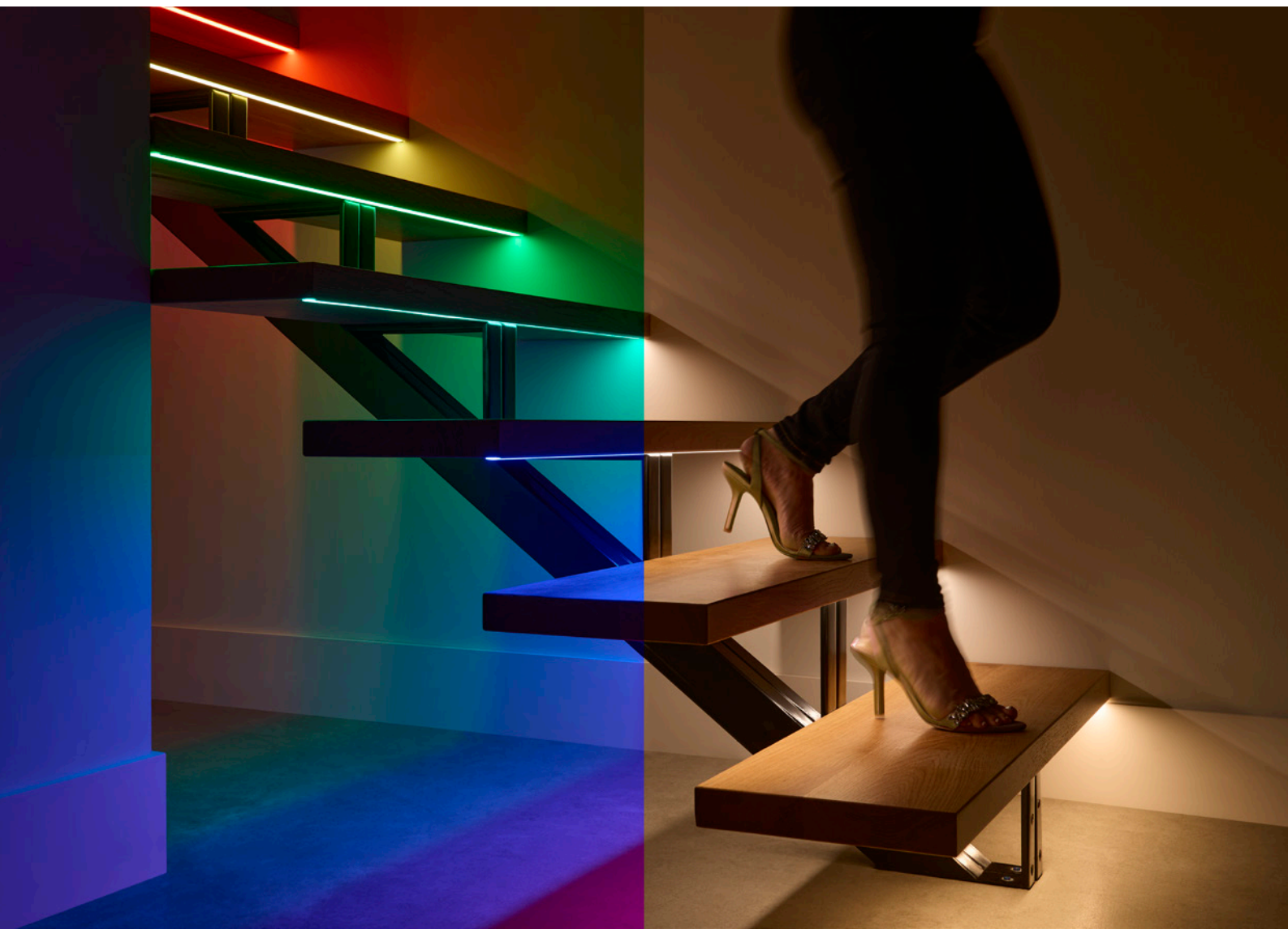
The Indian smart home market has distinct design sensibilities, lifestyle patterns, and climatic conditions. What makes this market unique, and how is Lutron tailoring its solutions to meet local requirements?

The Indian smart home market is driven by a burgeoning population that is aspirational and tech-savvy. They are far more willing to spend on comfort and luxury than previous generations, and also very willing to adopt



newer technologies. While the vast majority of luxury homes are still standalone units, there is a fast-growing segment of premium apartment buildings.

Our wireless home systems, like RA2 Select, are well placed to cater to these homes. For the luxury homes, HomeWorks offers unparalleled power and flexibility to provide complete control of natural and artificial light.



HomeWorks, through powerful features like natural show and a wide range of window treatments, elevates the ambience of any space and helps interior designers realise the full potential of their vision.

How does Lutron position smart home systems built on Intelligent Lighting in comparison to other solutions currently available in the market?

We position smart home systems built on Intelligent Lighting as a fundamentally different approach to other control systems on the market. Rather than using multiple third-party products, Lutron provides a complete, integrated ecosystem, where lighting fixtures, shading, and controls are engineered to work together as one.

This allows us to deliver a level of reliability, performance, and visual consistency that can be difficult to achieve with mixed-brand solutions. Built on our purpose-designed wireless technology, not Wi-Fi, Lutron Intelligent Lighting offers a stable foundation that is engineered specifically for reliability in demanding architectural environments and works beautifully and is open for wider integration across the smart home.

The result is a refined, luxury experience that feels effortless for the homeowner, and dependable for the professionals who commission and install it.

Lutron's expanded intelligent lighting portfolio now includes Ketra Lightbar Slim and new Ketra Lamp solutions. How are these products influencing designers' approach to layered lighting and natural-quality illumination in luxury interiors?

With the introduction of Ketra Lightbar Slim and our expanded range of Ketra Lamp solutions, we're seeing designers rethink how layered lighting is specified and experienced in luxury interiors.

These products allow Ketra's full-spectrum, natural-quality light to extend beyond traditional architectural fixtures and into linear

accents and decorative applications, areas that were previously treated as secondary or purely functional.

Ketra Lightbar Slim brings the same natural, tunable light quality found in our downlights into ultra-low-profile linear applications such as joinery, shelving, and under-cabinet lighting. This gives designers the ability to treat accent and task layers with the same care as ambient lighting, ensuring consistent colour, smooth dimming and uniform illumination across the space. As a result, layered lighting schemes can feel more intentional and cohesive.

The expanded Ketra Lamp portfolio allows decorative lighting to become a fully integrated part of lighting design. By offering Ketra's natural white light in familiar lamp formats, designers don't have to compromise between aesthetics and light quality. Decorative fixtures can now dim, warm, and shift in colour alongside architectural lighting, which maintains visual harmony throughout the day and into the evening.

Together, these additions are influencing designers to take a more holistic approach to layered lighting, utilising Ketra consistently across ambient, accent and decorative layers. This enables luxury interiors that not only highlight materials, artwork and architecture with precision, but also deliver light that feels natural, balanced, and deeply connected to human experience.

The unified HomeWorks + Ketra platform, powered by Clear Connect Type X, simplifies commissioning and control of lighting and shading. How do these system enhancements elevate the experience for both homeowners and installers?

For homeowners, it delivers beautifully seamless control - every fixture, keypad, and shade responds with extraordinary precision, enabling richer, more personalised lighting scenes and a consistently premium experience across the entire home.

The integration with Ketra and OrLuna elevates this further, offering natural light quality,

effortless colour tuning, and the flexibility to shape spaces exactly as desired.

For installers, the platform dramatically simplifies the entire project lifecycle. Clear Connect Type X provides robust, high-capacity wireless communication that reduces complexity, shortens commissioning time, and supports greater scalability. Integrators can complete projects faster, with fewer points of friction, and with the confidence that the system will perform reliably long after handover.

In essence, this new platform delivers the elegance, reliability, and simplicity that discerning homeowners expect - while empowering installers with the tools and efficiency they need to grow their business.

Looking ahead, what is Lutron's vision for AI-integrated solutions, and how do you see artificial intelligence enhancing the future smart home experience?

Our vision is centred on enhancing the home with intelligence that is intuitive, personalised, reliable and always secure. We see AI as a powerful enabler - in the future smart home, AI



will help make spaces and experiences more responsive, seamless, and human-centric. Crucially, our approach prioritises trust, privacy, and long-term reliability, ensuring that AI enhances the experience without adding complexity. Our goal is to bring intelligence that feels effortless - empowering homeowners while enabling our partners to deliver even greater value.

Are there plans to introduce Matter compatibility within Lutron's ecosystem to further strengthen interoperability and future readiness?

While we do not comment on future product roadmaps, Lutron, as a board-level member of the Connectivity Standards Alliance, where Matter is being developed, has supported its mission since inception.

Lutron's support for the CSA's mission is closely aligned with our company's guiding principle of taking care of the customer. One important way we do this is by providing seamlessly integrated and delightful connected experiences. In fact, our systems already connect with industry-leading smart home brands like Amazon Alexa, Apple HomeKit, Google Home, Ring, Sonos and many more.



“We are Committed to Providing a True Sonic Experience.”



Anindya Mukherjee

Managing Director, Sonodyne Technologies Pvt. Ltd.

Anindya Mukherjee speaks about Sonodyne’s strategic partnership with Pro FX, the flagship PRIVÉA home cinema range, and the brand’s focus on delivering premium, immersive residential audio experiences. He also shares insights on upcoming product launches and innovations in streaming and home theatre solutions.

Can you tell us about your collaboration with Pro FX and the vision behind this partnership? Are you planning to introduce anything as part of this collaboration?

With the advent of OTT, high-definition immersive audio is more accessible. This is an excellent platform to deliver a true cinematic experience at home. At the same time, Pro FX has excelled in garnering a strong channel in a very fragmented market. It is a very organic step for us to join forces to deliver high-quality solutions for the discerning listener.

Under this collaboration, Pro FX will spearhead national distribution, dealer development, and product placement for Sonodyne’s home theatre portfolio, including:

- IWO Range – premium in-wall and on-wall loudspeakers.
- Sonus Range – high-performance classic speakers.



- Roarr powered subwoofers
- Micro HTS1: 5.1 HTIB.
- SIC: High performance in ceiling speaker for music and multichannel audio.

Are there any flagship or premium offerings that you will be focusing on for the Indian audience?

The luxury custom home theatre is a small but



growing space and we have developed a specialised line, PRIVEA, for this. Privea derives its powered-speaker technology from our globally acclaimed studio line. It is exceptionally powerful, dynamic, and clear, and importantly, it meets critical guidelines set by CEDIA and DOLBY. The go-to market is through very specialised systems integrators who need support in design and case-locking.

The partnership with Mahavir Soundroom, as exclusive distributor, is to ensure that the channel partner and end user can get the true Privea experience of luxury at every stage.

PRIVÉA is the shining star in Sonodyne's 55-year sonic journey and brings a true cinematic experience to your private viewing space, your personal home cinema.

Will you be launching or displaying any new



products or solutions at Smart Home Expo 2026?

The PRIVÉA range will be showcased at an exclusive hall at Smart Home Expo (105A).

What are your long-term plans for expanding and establishing your brand in the Indian market?

Our products for residential audio are divided into 3 verticals.

- Luxury Range - PRIVÉA, distributed by Mahavir Soundroom.
- Home theatre systems - distributed by MS Pro FX.
- Streaming: These are Dolby Atmos-enabled soundbars and we hope to make an exciting announcement for a strategic distribution partnership for this new range at the Smart Home Expo 2026.

“We Don’t Just Design Speakers, we Create Acoustic Works of Art that Transform Both Sound and Space.”



Cédric-Aubriot
Founder, Waterfall Audio

Cédric Aubriot, Founder of Waterfall Audio, shares insights into the brand's journey of redefining high-end audio through a distinctive fusion of acoustic excellence and design innovation. In this interview, he discusses the inspiration behind the company's iconic glass speakers, its proprietary technologies, and how Waterfall continues to push boundaries in delivering immersive, design-led audio solutions for modern luxury interiors.

Waterfall Audio has carved a distinctive identity in the high-end audio world through design-led innovation. Could you take us through your journey so far and their plans?

Since 1996, Waterfall Audio has pioneered the fusion of High-End Audio and Interior Design with its glass towers, becoming a piece of art, enhancing any Interior style. Using our exclusive innovations and technologies, our speakers are individually handcrafted and assembled with the highest care in our factory in the South of France.

Each piece reflects our passion for excellence and is our definition of a luxury item in true French fashion.

We propose the ultimate acoustical and visual solution for all residential audio-video requirements. A Waterfall speaker is the result

of a passion without limit, bringing together technology and unique design. In our profession, we are often referred to as Acoustic Jewellers, the fusion of high-end audio and Interior design, so in the future, we will just continue to design and bring more aesthetic and great-sounding products to the market.

Waterfall Audio is globally recognised for its iconic glass speakers. What inspired the use of glass as an acoustic and aesthetic material, and how does it work?

In 1996, when the Hi Fi world was already full of many products, we needed to bring out a different product and one with the WAF (woman acceptance factor) and more interior design approach; it was not easy.

First thing to remember: most audiophiles think that a speaker should be made out of



wood, but not all musical instruments are made out of wood, i.e Saxophones, trumpets, drums, cymbals, etc., then in the case of a violin or a guitar, the wooden case participates in the tune and sound by vibrating.

In the case of a loudspeaker, it is the movement of the driver and not the vibration of the case that gives the sound; in fact, when the case starts vibrating, the quality of the sound reproduction is altered. The example being that many speaker manufacturers use structure reinforcing devices to have a more rigid structure, the ideal solution so far has been to use inside panels filled with sand, for its density and inertia and glass is sand.

So the highly interesting choice of glass is not just for its aesthetic qualities but also for its extreme density, so no vibration of the case will come to alter the sound reproduction.



Clearly, Waterfall is the pioneer in this field, because as seen above, glass is very dense, but it is a very reflective material, which is a real obstacle to the conception of a speaker, as the energy generated from the back side of the driver needs to be damped. In a conventional speaker, manufacturers use various damping materials inside the enclosure, but in the case of a transparent enclosure, it is NOT possible!

The challenge was then to dampen this energy within the enclosure without using damping material, which appeared impossible.

The secret of the functioning of our speakers is all in the patented technology Acoustic Damping Tube (ADT), which, after 20 years, has evolved to the NEW Jetstream Technology

Bass plays a crucial role in immersive audio. How are Waterfall Audio subwoofers engineered to deliver depth and impact while maintaining the brand's signature elegance?

Our floor-standing glass speakers are full range

and do not need a Subwoofer; they integrate a passive driver in the base of the speaker, which helps increase bass response.

Our Subwoofers are not made of Glass for the time being, even though the demand is there, but we have several Subs for various applications with Design elements.

We have our Pro Custom Series Cinema line, which has our famous SUB600S, which uses a fantastic 23cm ATOHM s driver design, which develops an excursion of more than 40mm. It is therefore fast, precise and powerful and yet the thickness of the subwoofer is only 21 cm thick.

How does Waterfall Audio approach home cinema design, and what makes your speaker systems and amplifiers well-suited for premium cinematic experiences?

The purpose of our Pro Custom series is to deliver the ultimate home theater sound experience to the end user while using a compact solution. The PCS (Pro Custom

Series) provide the ultimate home theater speaker solution: easy to integrate and capable of delivering precise and exquisite sound, without losing the Impact necessary in a professional Home Cinema system.

We have partnered for Years with ATOHM, also from France, a company highly regarded for its great driver's production and design. All our speakers include the <<Absolute series>> range of drivers. The design of these drivers has been specifically engineered to eliminate acoustic distortion problems, which can occur in lesser quality products.

A driver is a mechanical part that reproduces the audio signal by oscillating around an idle point. The ideal driver must then be able to function in a perfectly symmetrical way.

The following parameters have been optimised to the maximum for best performance, such as the symmetrical movement of the suspensions, the strength of the magnetic flux generated by the magnet, the stability of the inductive value of the driver and the thermal dissipation of the heat.

As an example, the low-frequency drivers used in the SUB 600S, are 23 cm (9"), capable of a linear excursion of 40 mm!

This over-motorised driver provides a great extension in the low frequencies without any distortions and with amazing high power handling. In the SUB 600S the 2 x 23cm (9") drivers move more air than a 30 cm (12") driver, so if you use 2x SUB 600 in line they will move more air than a 38cm (15") driver, using less space since they are only 21cm (8.26") deep, but equally important is the effect produced by the 4 drivers: providing quick, responsive bass, without any "boomy" effect.

Depending on the room size, you can add more SUB600S units to achieve the bass frequency level desired.

We have developed, together with our partner ATOHM, a specific power amplifier equipped with a DSP.

The purpose of the RS700-DSP - Waterfall Audio Special Edition is to offer customers the best performances with perfect control





of all the parameters and total safety, making it the perfect amplifier to work in the cinema application with the Waterfall “Pro Custom Series” sub&speakers and our full floorstanding range of XT speakers.

Could you elaborate on Waterfall Audio’s proprietary JETSTREAM™ technology and explain how it contributes to improved sound dispersion, clarity, and overall listening experience?

Waterfall engaged in extensive research and development of the acoustic technologies with its JETSTREAM SYSTEM, which allows the speakers to produce superbly accurate, high-end performance within their effectively undamped glass enclosures.

Jetstream New Technology

Based on an aluminium turbine blade structure, integrated at the back of the driver, this exclusive innovation has 5 main functions:

- It limits the return of the back wave on the cone

- It enables mid & high frequencies damping
- It optimises air flux pressure for perfect bass response
- It optimises heat dissipation
- It provides mechanical uncoupling of the mid-bass driver and the glass structure

Who are Waterfall Audio’s key partners in India, and how do these collaborations help strengthen your presence and service capabilities in the region?

Our long-standing partnership, which began in April 2018, has been extremely positive from the outset. Vinshek stands out as a full-fledged distributor with a dedicated team, including over 12 Business Development Managers actively supporting the Indian market and helping dealers grow to the next level.

They provide exceptional support to their dealer network, and their portfolio of complementary brands enables partners to deliver complete solutions across a wide range of residential projects.



Luxury, Technology, and Connected Living

Step inside Pune's Smart Homes Experience Centre and discover how luxury meets technology. From immersive lighting and home theatre setups to seamless automation and climate control, this space lets you experience smart living firsthand.

Located in Pune, the Smart Homes Experience Centre is not just a showroom; it is a gateway into the world of luxury living reimagined through smart home technology. Conceived by Founders Pratik Singhal and Sankalp Goyal and designed by Amit Bhat, Principal Architect, AB Architects showcases the seamless integration of smart home solutions within a luxurious residential context. Unlike conventional showrooms that display products in isolation, the Experience Centre immerses visitors in a fully functional, high-end home environment, allowing them to experience firsthand how automation, lighting, HVAC, entertainment systems, and security can converge to create an intuitive and effortless lifestyle.

"It takes a lot of hard work to keep things simple, reliable, and effective. The underlying

concept behind the Experience Centre is experiential living. Every corner, every fixture, and every system is designed to demonstrate the practical application of technology in luxury residences. From the moment a visitor steps into the double-height living and dining area, the space tells a story of sophistication and tech convenience. The design evokes the feeling of stepping into a fully realised home rather than a commercial space, creating an emotional connection between technology and lifestyle," informs Pratik Singhal, Founder, Smart Homes.

This experience centre aims at providing a real-life scenarios over static displays. The living and dining areas showcase dynamic lighting solutions and automated controls that transform the ambience according



to the time of day or mood. The home theater demonstrates immersive audio-video experiences, complete with motorised screens, theater-grade recliners, and integrated lighting control, illustrating how entertainment can be perfectly tailored to both design and function. Bedrooms and private spaces highlight comfort-driven automation, from climate control and fresh air ventilation to subtle decorative lighting that enhances aesthetic appeal while maintaining efficiency.

“One of the centre’s core philosophies is that technology should be invisible, intuitive, and enriching, rather than intrusive. This principle guided the placement of every system and device. Visitors can witness how lighting, blinds, HVAC, and entertainment systems work in harmony, responding effortlessly to user commands while maintaining a luxurious ambience. This is further reinforced by the inclusion of central vacuum systems and access control, emphasising the seamless integration of convenience, security, and environmental control in a modern luxury home.” adds Sankalp Goyal.



Premium Brands & Solutions on Display

This Experience Centre brings together a curated selection of world-class brands and solutions that exemplify quality, performance, and design. Home automation is powered by Lutron, RTI, and Basalte, offering seamless control of lighting, blinds, climate, and multimedia through a single, unified interface. Lighting solutions from iGuzzini, IBL, LED Linear, and Eurolite provide both functional and ambient illumination, tailored to the unique requirements of each space, while decorative lighting by Bomma and DCW introduces artistic, sculptural elements that enhance the overall interior aesthetic.

The home theater and entertainment areas feature high-end brands such as M&K, Marantz, MadVR, Powersoft, Epson, Elite Screens, and Recliner India, delivering immersive audio-visual experiences. Complementing these are audio-video solutions from Architettura Sonora, Amina, Cerasonar, SpeakerKraft, Wiim, Devialet, and BenQ, which integrate multi-room audio and





high-fidelity sound throughout the residence. The Experience Centre also prioritizes comfort and convenience with solutions like fresh air ventilation by InAir, central vacuum systems from InVac, and access control through Ekey, ensuring both hygiene and security without compromising ease of use. Finally, climate management is seamlessly handled by CoolMaster, demonstrating efficient and precise HVAC control to maintain optimal indoor comfort.

Every brand and product is showcased not as a standalone entity but in its natural environment, replicating real-life installation conditions. The centre avoids static product displays or segmented brand walls. Instead, every system is seamlessly embedded into the living spaces, allowing clients to see how each component interacts with the overall design, functionality, and lifestyle of a luxury residence.

Integrated Technology

At the heart of the Smart Homes Experience Centre lies the RTIXP8v processor, coupled with a customized control app that unifies all home automation, lighting, HVAC, entertainment,

and security systems. This integration allows visitors to control multiple systems from a single interface, providing a true reflection of how a modern smart home operates.

Clients can interact with the system using iPads provided at the centre or through strategically placed Lutron keypads, giving them the opportunity to experience the technology firsthand. For instance, a visitor can adjust lighting, close automated blinds, start the home theater system, and regulate HVAC, all seamlessly and intuitively. This approach not only demonstrates the capabilities of each system but also highlights the simplicity and convenience that comes with a fully integrated smart home.

Experiential Journey

Visitors are guided through a narrative journey, starting with the public areas of the residence, such as the living and dining spaces. Here, automated lighting responds to different scenarios, such as entertaining guests or relaxing in the evening. The home theater demonstrates cinema-grade audio-visual



integration, where visitors can experience the precision of sound and the clarity of high-resolution projection systems.

Private spaces, such as bedrooms and personal lounges, showcase the subtler aspects of automation. Climate and air quality control, automated curtains, and ambient lighting all contribute to a restful and luxurious environment. Clients can operate systems themselves, giving them the confidence to understand how these technologies function in their own homes. This interactive, hands-on approach is a key differentiator from conventional showrooms, emphasizing learning through experience rather than observation.

Throughout the centre, the seamless interplay of technology highlights the philosophy that smart systems should enhance human comfort and convenience without overwhelming the design or aesthetic of a residence. Every device is intentionally placed to complement both function and form, demonstrating that technology can be both high-performing and visually unobtrusive.

Educating & Inspiring Clients

“Beyond being an interactive demonstration space, the Smart Homes Experience Centre serves as an educational platform. Clients are given the opportunity to explore, experiment, and understand the nuances of luxury home automation. They learn how lighting, entertainment, security, ventilation, and HVAC can be integrated to create cohesive, intelligent environments. They also gain insights into spatial planning, energy efficiency, and the role of technology in elevating everyday living experiences,” explains Pratik.

The experience centre demonstrates that automation is not merely a convenience but a transformative tool that enhances lifestyle, comfort, and well-being. By combining interactivity, education, and real-life application, the Experience Centre provides a blueprint for the future of luxury living.

This experience Centre allows clients to step into the future of home living. It demonstrates how thoughtful design and automation can come together to create a smart space.



A Modern Home with Smart Connectivity

Ar. Akshay Selukar designed this Smart home by blending contemporary architecture, heritage, and smart technology into a refined, multi-level living experience.

Ar. Akshay Selukar collaborated with System Integrator Pratik Awasthi, Founder, Autozon, to design this 10,000 sq ft home in Gujarat. Nestled in lush surroundings, this contemporary residence for a Gujarati family embodies the seamless integration of modern architecture, heritage, and smart home technology. Spanning multiple levels, the home is both functional and poetic, offering spaces that cater to privacy, connectivity, and lifestyle.

Designing with Nature & Heritage in Mind

At first glance, the home showcases a

dialogue between natural materials and contemporary elegance. Grey stone façades contrast beautifully with cascading greenery, while terracotta screens play with light and shadow, subtly concealing utility zones. Stone sculptures and handcrafted details evoke a sense of cultural richness, connecting the family to its heritage.

The ground floor has a parking area, office, gym, and guest bedroom, connecting seamlessly to a landscaped porch. The first floor houses the drawing room, living area, dining, kitchen, mandir, and master bedroom overlooking a raised garden, making outdoor



spaces accessible and visually connected. Upper floors include additional bedrooms, entertainment zones, and common areas, maintaining a balance between privacy and shared experiences.

Material choice shapes the sensory experience. Interiors feature a layered palette: hydro and river-washed stone, leather, grooved stone, fluted wood, and rich veneers. Exposed concrete ceilings with suspended volumes act as both structural elements and integrated lighting fixtures, enhanced with woven rattan diffusers for warm, soft illumination.

Smart Home Integration: Comfort Meets Technology

The home is fully equipped with an intelligent ecosystem that seamlessly balances

automation, security, and ease of use, all while maintaining a clean and elegant aesthetic. The HVAC system is a Mitsubishi Electric VRF with zoned control, allowing precise temperature management across different areas. Lighting is handled through DALI-based dimmable and tunable systems from Tisva and Oorja, with programmable scenes such as Relax, Entertain, Night, and Pooja Mode for effortless ambience control. Multi-zone audio by Casper and Fonestar enhances entertainment throughout the home, including the dedicated home theatre and common spaces. Security is ensured through Hikvision surveillance, Prama CCTV, and Autozone gate automation, providing remote monitoring and controlled access. All systems are managed via wall-mounted panels and smartphone interfaces from Autozone, offering intuitive and seamless operation.



Ease of use was a priority. Touch panels, smartphones, and scene-based automation allow effortless control for all family members. Thoughtful zoning, wide walkways, and strategic device placement enhance accessibility, ensuring technology feels invisible yet intuitive.

This residence exemplifies the harmony of tradition, nature, and technology. It celebrates craftsmanship, natural materials, and contemporary design, while delivering a future-ready, smart home experience. A true example of how a home can be culturally rooted, visually inspiring, and technologically advanced.



TECH INSIGHTS

System Integrator: Pratik Awasthi,

HVAC: Mitsubishi Electric VRF with zoned control

Lighting: DALI-based dimmable and tunable systems from Tisva and Oorja

Entertainment: Multi-zone audio by Casper and Fonestar

Security: Hikvision surveillance, Prama CCTV, and Autozone gate automation for remote monitoring and controlled access

Interfaces: Wall-mounted panels and smartphone control via Autozone

Gate Automation: Autozone



From Automation to AV: Smart Home Expo 2026 Showcases What's Next

smart home expo

MUMBAI

28 • 29 • 30 APRIL 2026

Jio WORLD CONVENTION CENTRE

Smart Home Expo 2026 promises more than exhibits, it's an interactive journey into the world of smart living. Visitors will experience live demos, hands-on automation, and immersive AV and lighting solutions from top 450+ brands.

Connecting the world's smart tech brands with industry professionals, Smart Home Expo 2026 is India's largest smart technology Expo for residential and commercial segments that returns for its highly anticipated 7th edition from April 28–30, 2026, at the Jio World Convention Centre.

This year, the Expo promises an even more dynamic, immersive, and interactive experience, showcasing the very best in smart technology and automation solutions. Visitors can expect not just products on

display, but fully functional systems, hands-on experiences, and innovative solutions that are shaping the future of connected homes and intelligent buildings.

Riding high on last year's success, this year's edition, Smart Home Expo 2026 is set to bring the entire smart living and intelligent buildings ecosystem under one roof.

Spanning a massive 15,000 sqm gross exhibition area and featuring over 450 exhibitors, the event is designed specifically for



trade visitors that include system integrators, architects, interior designers, consultants and professionals across residential and commercial sectors, who are looking to stay updated.

Over three action-packed days, the show will bring together over 450 leading brands showcasing solutions across smart home technology, home automation, lighting technologies, audio-video solutions, smart security systems, smart building solutions, and consumer electronics. This creates a highly focused platform for decision-makers to explore what's next, witness innovations in action, and build meaningful business opportunities across the channel. For visitors, it's a rare chance to experience the latest technologies side by side, compare solutions, and see how they can be integrated into real-world projects.

Smart Home Expo 2026 is supported by a strong lineup of partners across key categories, reflecting the scale and industry relevance of the event. **Havells India** joins as the Title Partner, **Electronics Mart India Limited (EMIL)** as the Powered By Partner, and **KNX National India** as the Technology Partner. Together, these partnerships reinforce the expo's focus on smart technology, innovation, and design

across residential and commercial spaces.

The Platinum Partners include **Sonos, Cinebels, PRO FX, Miantic, Vinshek, Smato, CP PLUS, Cavitak, and KEI**. The Premium Partners lineup includes **Aero, RTI, Marantz, Basalte, GM Modular, BenQ, Epson, Optoma, Focal Powered by Naim, Devialet, Yale, Raylogic, Klipsch, Theory, Loewe, Smart Node, James Loudspeaker, Dorset, Sony, Casadigi, Schneider Electric, Origin Acoustics, Gallo Acoustics, Godrej, Rako, Sonus Faber, JBL, DigiLux AI, Krix, L-Acoustics, Sound & Vision, MDT, Moorgen, EverGlow, JR Autotech, ELAN, LAFIT, Quba, and modo**. This broad partner ecosystem reflects the depth of the show across categories such as audio video, smart controls, lighting, security, automation, and connected living.

The Knowledge Partners include **Indian Institute of Interior Designers - Mumbai Regional Chapter (IIID-MRC), Lighting Designers Association of India (LIDAI), Council of Architecture, CEDIA, and International Association of Lighting Designers (IALD)**, while **Connectivity Standards Alliance (CSA), Z-Wave Alliance, and Electronic Security Association of India (ESAI)** come on board as Supporting Associations. Together, these associations and industry bodies strengthen

the larger ecosystem around the expo, bringing greater visibility to standards, design, interoperability, and industry collaboration.

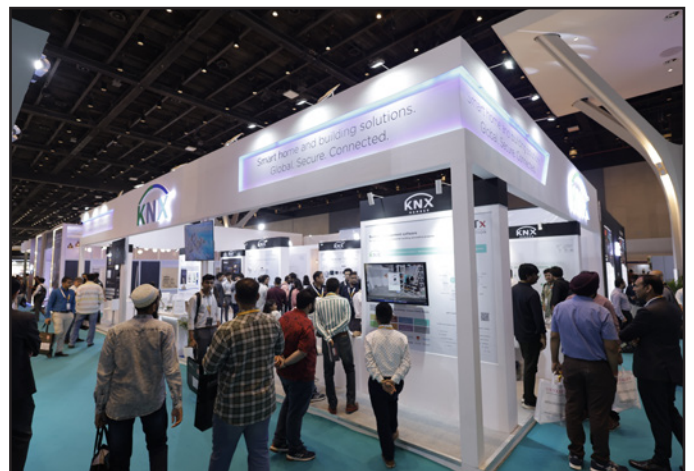
One of the most exciting highlights for 2026 is the return of the **AV Demo Rooms**, purpose-built, acoustically treated environments where professionals can experience high-end home cinema and audio performance exactly as intended. Featuring reference-grade speakers, immersive audio formats, premium projection, and integrated AV control, these rooms allow visitors to experience technology at its very best. For system integrators, AV designers, and consultants, this is a golden opportunity to evaluate products in real-world conditions, have in-depth technical conversations with brand representatives, and gain actionable insights for future projects.

Curated with leading global and Indian brands, the AV Demo Rooms are designed not only to showcase product performance but also to foster learning, collaboration, and

professional networking. They allow visitors to see how cutting-edge audio-video systems can be integrated seamlessly into residential and commercial environments, helping them make informed decisions for their clients and projects.

Another key attraction is the dedicated **KNX Pavilion**, returning as a focused showcase for KNX manufacturers. The pavilion will host leading KNX brands and demonstrate interoperable, scalable solutions that are ideal for professionals working on complex smart building projects. Visitors can see KNX systems in action, explore integration possibilities, and gain a deep understanding of how standardised automation technologies can simplify system design and enhance long-term value.

Beyond the exhibition floor, Smart Home Expo 2026 continues to expand its experience-led and knowledge-driven offerings. **Lighting Connect** brings together lighting designers,





architects, and technology experts to explore smart lighting, lighting controls, and human-centric lighting design. Through practical demonstrations, focused conversations, and insightful sessions, visitors can learn how lighting technologies can transform spaces while enhancing energy efficiency and user experience.

The **Smart Space Awards** continue to celebrate excellence where design and technology converge. Residential and commercial projects that demonstrate innovation, functionality, and aesthetic brilliance will be recognised, providing visitors with inspiration and benchmarks for their own work. The awards also offer an opportunity to connect with the award-winning teams behind these projects, opening doors for collaboration and future business.

The **Smart Building Summit**, meanwhile, acts as a dedicated forum exploring the future of intelligent buildings and connected spaces.

Through expert-led sessions, case studies, and interactive discussions, visitors can gain insights into the latest strategies, technologies, and design approaches that are shaping the built environment, from smart offices to high-tech residential complexes.

For system integrators and professionals, Smart Home Expo 2026 is more than just an exhibition; it's a complete learning, networking, and business development ecosystem. From experiencing cutting-edge solutions firsthand to attending high-level knowledge sessions, the expo offers multiple ways to stay ahead of market trends, discover future-ready products, and build strategic partnerships that can accelerate business growth.



The Association for Smart Home Professionals™

CEDIA will conduct two Workshops, **Immersive Audio and Acoustic Design Workshop Date: 26 & 27 April, 2026 Venue: Meeting Suite 207 (2nd Floor), Jio Convention Centre**. This advanced workshop is about the engineering principles embodied within RP22 that underpin truly exceptional immersive audio experiences. It examines how system architecture, loudspeaker selection and placement, low-frequency design, and acoustic design interact to deliver objectively defined levels of performance and customer experience. The focus is on designing environments where sound is not simply reproduced, but precisely rendered within a coherent, stable, and believable acoustic field. Participants will be introduced to objective performance targets that define different levels of immersive experience, and how these targets inform decisions across discovery, design, system engineering, specification, and calibration. The workshop follows a teach-then-apply approach. Participants will work in small groups to analyse real-world rooms and develop engineering-led design responses that integrate system layout, low-frequency strategy, and acoustic considerations into a coherent performance-driven solution. The emphasis throughout is on objective engineering methodology and designing toward clearly defined experiential outcomes, rather than specific products or brands. This is not an introductory course. Participants are expected to already have a solid foundation in audio and video system design. The workshop is intended for integrators, consultants, manufacturers, and design professionals seeking to deepen their understanding of immersive audio engineering and acoustic design in private entertainment environments.

CEDIA RP32 Audio System Measurement and Verification Workshop Date: 30 April, 2026 Venue: Meeting Suite 207 (2nd Floor), Jio Convention Centre This intensive, hands-on workshop introduces the engineering methodology and recommended procedures

COURSE INSTRUCTORS



defined in CEDIA's new RP-32 Audio System Measurement and Verification Recommended Practice. It focuses on the critical role of objective measurement and verification in delivering predictable, repeatable, and high-performance audio systems across both residential environments. Participants will explore how measurement and verification form the essential bridge between design intent and realised performance. The workshop examines how to establish reliable measurement conditions, select and deploy appropriate instrumentation, and capture meaningful acoustic and electroacoustic data. Attendees will learn how to interpret measurement results in the context of system performance, acoustic behaviour, and listener experience. Particular emphasis will be placed on developing a structured and repeatable verification workflow. This includes measurement planning, microphone placement strategy, signal selection, environmental considerations, and data integrity. The workshop follows a teach-then-apply format, with participants working directly with professional measurement microphones, analysis software, and verification tools. Through guided exercises, attendees will gather real-world data, analyse system performance, and develop a clear understanding of how objective measurements support engineering decisions and confirm that systems perform as intended. In addition to measurement techniques, the workshop addresses professional documentation and reporting. Participants will learn how to present verification data in a clear, structured, and defensible manner, supporting project sign-off, client communication, and long-term system maintenance. The course will be taught by Adam Pelz, who chaired the working group that wrote RP32, and Peter Aylett, who chaired the working group that wrote RP22. Both are internationally recognised practitioners in the design, engineering, and calibration of some of the world's best-performing private cinemas.



INDIAN
INSTITUTE
OF INTERIOR
DESIGNERS

MUMBAI REGIONAL CHAPTER



PRESENTED BY



POWERED BY



NATIONAL TECHNOLOGY AWARDS FOR INTERIOR DESIGNERS, ARCHITECTS, SYSTEM INTEGRATORS

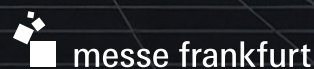
NOMINATIONS **OPEN**

SUBMISSION DUE UNTIL
MIDNIGHT 06TH APRIL 2026

28th APRIL 2026

Jio World Convention Centre,
BKC, MUMBAI

ORGANISED BY



www.smarthomeexpo.in

EXHIBITING BRANDS IN 2026

THOME	1 SOUND	AERO Visual Brilliance	ARCHE TECHNICAL SOLUTIONS	ARIAIO	ARISS	AUDIOHOZZ	A-OK® Advanced Control System Custom-Made & Future-Proof	aretex	axiom	audioquest	AYTEXCEL HEARS. LISTENS.	ACOUSTIC ENERGY SOUND SOLUTIONS
audio one	ampio	AGETECH TECHNOLOGIES PVT. LTD.	AVOQZ BY AVTECH	Akuvox Open A Smart World	ALTA LABS	artsound	AUDIO NIRVANA	axis Y SOUND SYSTEMS	autosync	akubela	ALVis atvishomes.com	AUREA THEY CHOOSE SOUND AT AUREA
audioflow	AMINA	ATHEM	ASCENDO TECHNOLOGY	ADVANCE PARIS	Adept Audio®	AUDIBAXI	auden	aurus DESIGN LAB	Artcoustic	AUTO MATRIX	ATIOS	AUTOZON® ENTRANCE AUTOMATION
Aecooly	AWOL VISION	AudioControl	ALLBOTIX	AMENTIS	AJAX	AIRZONE	bond	bri3zo	GO AMERICA	black nova	BUGANI HEAR & ENJOY	basIP
BLAZE BY SONANCE	Discocontours LIVE AUDIO SYSTEMS	Backroad	BANDRIDGE	benq	Beatsol	BLUSTREAM	BAB TECHNOLOGIE	basalte	BuildTrack	boho SOUND SYSTEMS	Brihaspathi SOUND & LIGHT SOLUTIONS	BLAUBERG Fensterlärmwächter
BEC Mark	CP PLUS	CRESTRON	CAVITAK	CASADIGI	CasaTunes THE #1 COMPANY COMPANY	CyberData THE #1 COMPANY COMPANY	CANVAS HIFI RERIVITED	CAMBRIDGE AUDIO	COHESIVE	CKESSIDA	Cinebels 3S	COOLAUTOMATION
Cynthecys® SOUND SYSTEMS	CUE	CANDELA	CONFIO	clearview	cerasonar	CONTROLPOINT	CLEAR	CORNERE AUDIO	DEVIALET	ATI Automator Pvt. Ltd.	alhua SOUND SYSTEMS	DUNE HD
DAVIS ACOUSTICS	DRAINVAC	Discipline	D. DEFINITIVE TECHNOLOGY	DALI	DBGTECH IN	DENON	DECO WINDOW	Drix® PURE INTELLIGENCE	DOO	DS	DOCH	Dangbei
DNAKE	dorsët	DYNA VOICE	DIGILUX-AI	Elenmore	Ethereal	EMI	Ey Electro-Voice	ELAC	Ember AURA	elipson	EDIFIER	EE&C SOUND SYSTEMS
ESCALA TECH	ENGSTRÖM	ecler	ELAN A HIFI BRAND	episode	EverGlow	EAE TECHNOLOGY	escozor®	EPSON	ERA ELECTRO DEVICES	EARTHQUAKE SOUND Sound That Will Move You	EVOLIX	ELKO ep
ECOFLOW	ELITE SOUNDING	FORTRESS SEALERS	fasttel Door entry systems	FONESTAR	FYNE AUDIO	FSCREEN	FX	FUNKTION ONE	future KNX	FORMOVIE	FUNK SOUND SYSTEMS	FAITH® Quality Speaks
FOCAL SOUND BY NAIM	FIRELUX®	FS cables	Goody LOCAL & INTERNATIONAL SOLUTIONS	GEZE	GRANDSTREAM SOUND SYSTEMS	Global Caché	G	GVS®	GALLO ACOUSTICS	GP3 SWITCH SWITCH TO A BETTER WORLD	GM	theben
G:B:D:	Grimm AUDIO	Goldmedal SPEECH TO THE HEARING	HMS	HAVELLS Etrastore	HEGEL MUSIC SYSTEMS	Hisense	Holm	HITECH SOUND SYSTEMS	HI-FOCUS®	HECO®	Heaven AUTOMATION	hushHiven
'INTERRA	INSPINIA	Intesis®	indiana line	Integra.	I PORT BY SONANCE	INEL®	IG	IFIXX HEAR THE DIFFERENCE	inSona	Invsys	ilevia	integron
its	JINAI	Jamo	JMGO	Joseph Audio	JAN MAURER SOUND SOLUTIONS	James	JR	JBL	JAL	KLS electronic	KRIARZ Your Vision, Our Design	kit
KiCA	K	Klipsch	KRIX EXPERIENCE SOUND	KUNIG FREITAG SOUND SYSTEMS	KEF	kordz Connectivity Assured	KNX NATIONAL INDIA	KGEAR Smart Audio Solutions	kasper®	KEI	LEDLENSER	
LINN	Lithoss	LOEWE.	Little NAP RECLINERS	LA SOUND®	LEA	LAFIT	LuckyLight SOUND & LIGHTING SOLUTIONS	LIBRE® SOUND SYSTEMS	LifeSmart	Living Emotions®	Lumagen	
Lector SOUND SYSTEMS	Lectron TUBE AUDIO AMPLIFIERS	LINDEMANN.	MyFitSpark	ME PRODUCTS SOUND SYSTEMS	melodika	MIANTIC AV	MYCON LINK	MERIDIAN	mangadans ACOUSTICS	MERASON dedicated to music	Mola Mola	MW MEAN WELL
morel	MDT TECHNOLOGIES	Magnat®	M	MV AUDIO	modo	moorgen	marantz	MAGNA	M&K SOUND	MESSING Axiom	MORION	MBA
META AV	MARTIN LOGAN	MOORE	McIntosh	MISSION	MEMISON	N-LABS	NEFCON	NUOS Home Automation	NANTA	nishara	netstar	NETX AUTOMATION
OSKAR BANG & OLUFSEN	OXYKRAFT®	Optoma Experience more	ONRYO	OEHLBACH®	OSD BLACK	ORIGIN ACOUSTICS	OAD	OSTEQ	ohm	PROFECT	PRIMA SOUND SYSTEMS	PEN WORKERS SEATING COMPANY SINCE 1984
PANARA	PANDA AUDIO	PRO FX	polk	ProtoPixel	pure.acoustics®	PALLID SOUND SYSTEMS EXPERIENCE THE ART OF THE SOUND	Paradigm	PRIMARE	prince AV concepts	PRISM	phlipton THE SOUND OF THE FUTURE	Platin
quba SOUND SYSTEMS	Q ACOUSTICS	QED	REVOLUTION® ACOUSTICS	rbh.	Russound	rithum	rako	RENSON Creating healthy spaces	VERA	raylogic	RAEX SOUND SYSTEMS	REL ACOUSTICS LTD.
RCI	ROTEL	REVEL® SOUND SYSTEMS	Rokid	RIVA SOUND	SMATO	SONY	SOUND & VISION	Schneider Electric	SIM®	STEALTH ACOUSTICS	SONANCE BEYOND SOUND	Supersystem



smart home expo

MUMBAI

28 • 29 • 30 APRIL 2026

Jio WORLD CONVENTION CENTRE

INDIA'S LARGEST SMART HOME TECHNOLOGY TRADE SHOW

DON'T MISS THESE HIGHLIGHTS



Interested In Exhibiting or Speaking? Get in touch with us at

Monika Agnihotri +91 93210 24581 | monika@smarthomeexpo.in

Bankim Laher +91 8591277084 | bankim.laher@india.messefrankfurt.com

Organised by:



messe frankfurt

EXHIBITION • NETWORKING • PRODUCT DEMO • CONFERENCE • TRAININGS

REGISTER NOW

www.smarthomeexpo.in



Elevate Your Luxury Living with Premium Home Theatre Solutions from BenQ

BenQ brings cinematic-quality home theatre to life with advanced 4K projectors, vibrant colours, and seamless smart home integration, transforming any space into a premium entertainment experience.

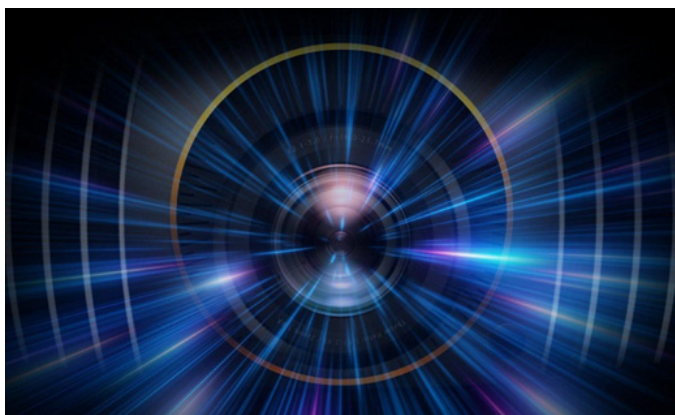
BenQ is dedicated to delivering products that effortlessly integrate into consumers' lives, elevating their experiences across multiple segments. BenQ is redefining the luxury home theatre experience by blending cutting-edge technology with unparalleled design and performance. Recognising the growing demand for high-end entertainment solutions, BenQ has focused on developing projectors that deliver cinematic quality right into the comfort of your home.

Technological Innovations

BenQ is committed to pushing the boundaries of technology to enhance user experiences



across our product range. They are harnessing cutting-edge technologies such as DLP and solid-state illumination (SSI), such as 4LED(RGBB), RGB Laser, and Blue Core Laser



Light Sources, to guarantee unparalleled performance

Setting industry benchmarks, BenQ's projectors deliver high colour accuracy, covering 100 per cent of the DCI-P3 colour gamut & Filmmakers mode. BenQ's proprietary CinematicColor™ technology ensures immersive, true-to-life colours.

BenQ has recently developed a specialised software for projectors, Qcolor. This software

provides a seamless colour calibration experience. Their focus remains on enhancing colour performance for their high-end Home Cinema Models: W Series (W5850/W5800) for an authentic calibration. This dedication results in a cohesive, optimized colour management ecosystem that professionals and cinephiles can rely on for true-to-life colour representation.

Featured Range

With W5800, you can experience up to 200" screen with laser-sharp clarity at the comfort of your home. It is a perfect choice for premium Luxury Home Theatre Rooms. Some of its Key Features at a glance:

- Outstanding visual quality: True 4K UHD resolution (3840x2160) with 2600 ANSI Lumens brightness from a laser light source. It offers 100% DCI-P3 colour gamut coverage up to 2100 ANSI Lumens brightness, ensuring vibrant and accurate colours.



- **Advanced Features:** With features like Local Contrast Enhancer, Dynamic Black Technology, and HDRPro™, along with HDR10/ HLG Support for perfect details in dark & bright scenes
- **Flexible installation:** 1.5-2.45 throw ratio, 1.6x motorized zoom, vertical $\pm 50\%$ and horizontal $\pm 21\%$ motorized lens shift, and 2D keystone correction for flexibility and ease of installation
- **Enhanced Connectivity:** With HDMI 2.1 support along with ARC/eARC, it delivers superior image and sound quality. USB-A port with media reader support to play 4K stored content.

Compatibility

BenQ Projectors are pivotal in enhancing the smart home setup, offering immersive entertainment and practical utility. Projectors seamlessly blend into the connected home environment, serving as versatile hubs for both information and entertainment. They are compatible with leading automation devices & software with the help of LAN and RS-232 port.



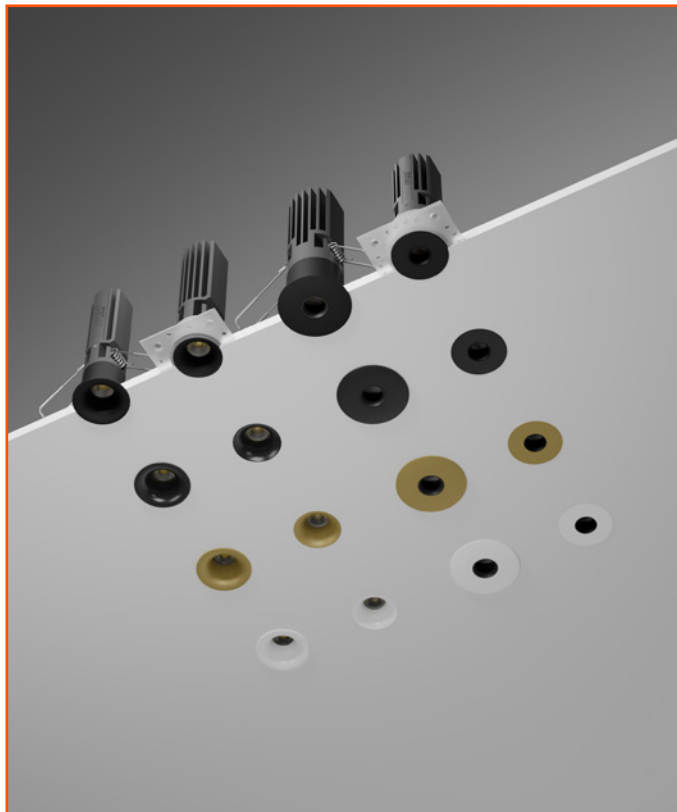
In summary, BenQ is at the forefront of delivering luxury Home Theatre Projectors designed with advanced technology, superior design, and intuitive integration. BenQ's projectors are not just about delivering stunning visuals; they are about creating an immersive, cinematic experience that transforms your space into a high-end theatre.

Crafting Spaces Through Smart Lighting

Lafit Lighting brings together design precision and advanced engineering to transform illumination into an intelligent, seamless, and experiential element of modern design.

For over two decades, Lafit Lighting has been quietly transforming the way spaces are perceived and experienced, through a seamless blend of engineering precision and design sensitivity. Headquartered in Lower Parel, Mumbai, with two experience centres in Lower Parel and Andheri, and a 50,000 sq. ft. state-of-the-art manufacturing facility in Upper Thane, Lafit represents a rare integration of innovation, craftsmanship, and scale. With a portfolio exceeding 10,000 SKUs and a network of over 500 partners across India, the brand has established itself as a trusted collaborator for architects, designers, and lighting professionals nationwide.

At the heart of Lafit's philosophy lies a simple yet powerful belief: lighting is not merely functional, it is experiential. Each solution is conceived to shape how a space feels, how it performs, and how it connects with its users. Whether in a luxury residence or a large-scale commercial environment, Lafit's



lighting strikes a careful balance between aesthetic nuance and technical excellence. This approach is reinforced by strong in-house R&D, advanced testing infrastructure, and rigorous quality protocols, ensuring that every product delivers durability, consistency, and exceptional visual comfort.

In an era of intelligent environments, Lafit's solutions are designed to integrate effortlessly. Compatibility with advanced control systems such as DALI, DMX, and smart automation platforms enables lighting to become a responsive, adaptive layer within contemporary spaces. Beyond products, Lafit extends its expertise through end-to-end project support, offering lighting design consultation, customisation, installation guidance, and after-sales service—ensuring every project is executed with precision and reliability. Lafit Lighting, in essence, does not simply illuminate spaces; it helps define them.



exemplifies the brand's commitment to precision, performance, and refined design. Crafted from high-purity forged aluminium, the fixture is engineered for superior thermal management and structural durability. Its advanced heat dissipation system, combined with optimised airflow design, ensures consistent performance and an extended operational lifespan.

At its core lies a professional-grade optical system featuring an optical PMMA lens, delivering precise, uniform, and glare-free illumination. A specially designed diffuser softens the light output, creating a balanced and sophisticated visual experience. Powered by CREE COB LED technology, Morpox achieves exceptional colour consistency with SDCM 2-step MacAdam and a CRI Ra >90 (R9 = 60), ensuring accurate and vibrant colour rendering. With a UGR of less than 16, it offers superior visual comfort, making it particularly suited for human-centric environments.

Designed for adaptability, Morpox supports multiple control protocols, including DALI, Zigbee, Bluetooth, RF, and smart integrations, enabling dynamic and future-ready lighting applications. Its bottom-removable

A Comprehensive Lighting Ecosystem

Lafit's portfolio spans a complete spectrum of architectural lighting solutions. Its indoor range includes recessed and surface ceiling lights, downlights, spotlights, magnetic and track systems, panel lights, pendants, wall fixtures, strip lighting, cabinet and bedside lights, footlights, and versatile profile systems available in recessed, surface, suspended, and inground formats.

Outdoors, the offering extends to facade lighting, floodlights, street lights, highbay fixtures, spike lights, bollards, and specialised in-ground and underwater solutions, along with strip and rope lighting designed for landscape and infrastructure applications. Complementing these is a robust smart lighting and controls segment, featuring dimming systems, DALI and DMX controls, RGB and RGBW lighting, as well as app- and voice-enabled automation, allowing lighting to evolve from a static element into a dynamic, interactive experience.

Morpox: Precision Meets Experience

Among Lafit's standout innovations, Morpox



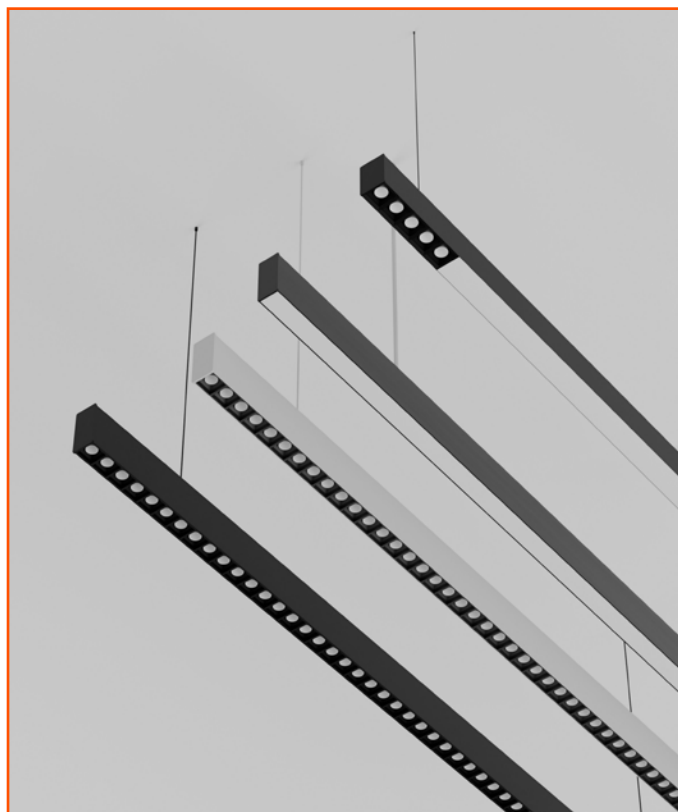
architecture further enhances practicality, allowing for easy maintenance without disrupting ceiling finishes, an essential advantage in high-end projects.

Compatibility with advanced control systems such as DALI, Casambi, Zigbee, Bluetooth, DMX, and smart automation platforms enables lighting to become a responsive, adaptive layer within contemporary spaces.

Morphix is a complete modular lighting range comprising 3 fixed modules and multiple mounting frames, engineered to offer maximum configuration flexibility from a single, unified product family. Ideal for architects and designers seeking precision without complexity.

Designed for Diverse Environments

Morphix is engineered for versatility, making it ideal for a wide range of premium applications—from high-end residential interiors and hospitality spaces such as hotels, lounges, and resorts, to retail showrooms, corporate offices, boardrooms, art galleries, museums, and healthcare and wellness environments.



More broadly, Lafit's solutions extend across multiple sectors, including hospitality, retail, residential, workspaces, education, healthcare, and cultural institutions. The brand also caters to public infrastructure such as airports, malls, cinemas, and gaming zones, as well as outdoor environments including roads, facades, landscapes, and water bodies

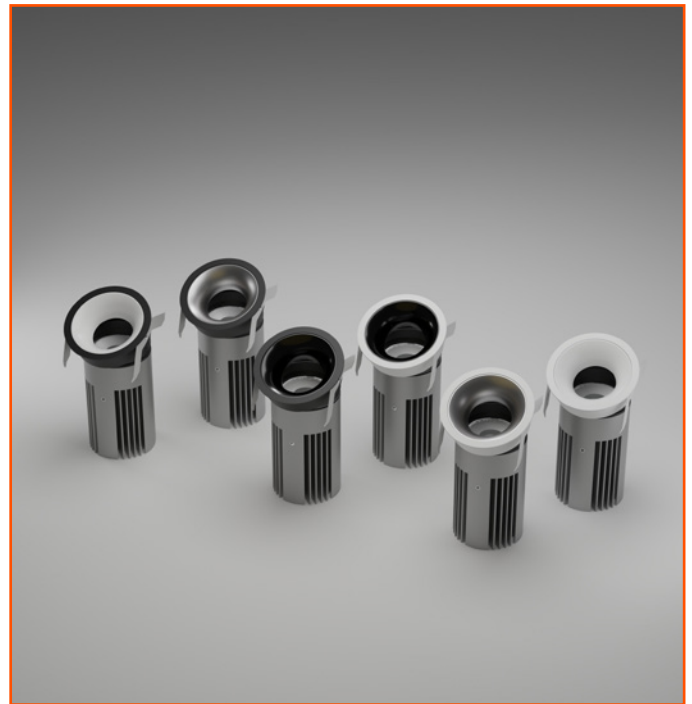
like pools and fountains. Its portfolio further addresses specialized spaces such as temples, ashrams, gyms, yoga centres, factories, and warehouses—demonstrating both range and adaptability.

Trusted Across Projects & Partnerships

Lafit Lighting's credibility is reflected in its extensive portfolio of collaborations. In hospitality, it has worked with leading names such as Novotel, Radisson Hotels, The Oberoi Group, Taj Hotels, Hyatt, Marriott, The LaLiT, Four Points by Sheraton, The Fern Hotels & Resorts, and Della Resorts.

Its association with developers and corporates includes industry leaders such as Aditya Birla Group, Lodha, Raheja Universal, Rustomjee, Kanakia, Avighna, Ajmera Builders, and Tata. In the retail sector, Lafit has partnered with brands like Bata, Croma, Peppercry, PNG, and Nexa.

Key projects span across the country, including the Ernst & Young Office in Pune, Fairfield by Marriott in Goa, Radisson Hotel in Lonavala, Hyatt Place in Vadodara, Four Points by Sheraton in Nashik, the VIP Lounge at Pune International Airport, PVR Cinema in Delhi,



and The Designera Gallery in Mumbai. The brand has also collaborated with renowned architects and designers such as Amit Porwal, Khozema Chitalwala, Rakesh Jeswani, Behzad Kharas, RED Architects, Aamir & Hameeda, Serie Architects, Studio Lotus, RAD Co Lab, and Pulin Shah.

A Commitment That Extends Beyond Products

At Lafit, quality is not treated as a checkpoint but as a continuous, evolving process. Every product undergoes rigorous testing using advanced equipment, including integrating spheres, spectrometers, and thermal testing systems, ensuring performance, reliability, and longevity. Supported by structured quality protocols and a dedicated R&D team, the brand maintains the highest standards across design, manufacturing, and delivery.

With a 5-year warranty and comprehensive after-sales support, Lafit reinforces long-term confidence for all stakeholders. By combining design intelligence, engineering precision, and end-to-end support, Lafit Lighting elevates lighting into a holistic design experience—one that goes beyond illumination to shape the very essence of space.

Because at Lafit, lighting isn't just seen—it is felt.



Sonos Unveils Sonos Play and Sonos Era 100 SL

Sonos introduced Sonos Play™ and Sonos Era 100™ SL, two new speakers that reflect a renewed focus on strengthening the Sonos system. Sonos introduced Sonos Play™ and Sonos Era 100™ SL, two new speakers that reflect a renewed focus on strengthening the Sonos system. Designed to deliver powerful, room-filling sound, they make it easier than ever to start and expand it room by room, creating a connected listening experience that grows with you over time.

Sonos Play is the brand's most versatile speaker with rich stereo sound that's designed to live at home and move seamlessly beyond it.

- Part of Your Sonos System: Connect over WiFi to group across rooms or pair for stereo, with a Charging Base to anchor it in your home.
- Portable Listening: Designed for everyday carry with a removable utility loop, you can listen on the go with 24 hours of battery life in a durable, IP67-rated waterproof design and a built-in power bank to charge your phone.
- Extend Your System Anywhere: For the



first time, group multiple speakers directly from a Bluetooth connection when away from home. Connect Sonos Play to your phone, then press and hold Play/Pause on up to three additional Sonos Play or Move 2 speakers to sync them together. Automatic Trueplay™ tuning dynamically adapts the sound to any environment.

- Sustainable by Design: Built with optimized power management and a replaceable battery for a lifetime of listening.
- Control Seamlessly: Use voice services, Spotify Connect, Apple AirPlay 2, and the Sonos app to bring your music, rooms, and devices together in one experience.

Barco to Acquire VerVent Audio Holding, Strengthening its Integrated Audiovisual Portfolio

Barco announces that it has reached an agreement in principle to acquire 100% of the shares of VerVent Audio Holding ("VerVent"), a French-British premium audio company active in high-end audio systems, headphones and automotive OEM audio solutions, with premium audio brands Focal and Naim. The agreement marks a strategic expansion for Barco's portfolio, establishing the company as a fully integrated audiovisual solutions provider.

An Steegen, CEO of Barco, comments: "Today marks an important step in Barco's ambition to shape the future of immersive audiovisual experiences. By welcoming VerVent and its



iconic Focal and Naim brands into the Barco family, we accelerate our strategy to deliver fully integrated solutions where image and sound reinforce each other seamlessly. Building on our leadership in visualization, we go all-in on Entertainment. The addition of high-fidelity audio strengthens the overall experience of our offering across high-end residential and broader consumer/home entertainment environments, as well as in professional markets. This combination expands our reach, deepens our technology capabilities, and positions us to capture new opportunities across the audiovisual value chain. We are excited to embark on this next chapter together."

Sony Expands BRAVIA Theatre Audio Lineup, Launches BRAVIA 3 II LED TV



Sony Electronics Inc., under its “Cinema is Coming Home” vision, launched new BRAVIA Theater home audio products and the BRAVIA 3 II LED TV, offering more ways than ever to create a powerful cinema experience at home.

The new BRAVIA Theater lineup includes BRAVIA Theater Bar 7 and BRAVIA Theater Bar 5, as well as the optional speakers such as BRAVIA Theater Sub 9, BRAVIA Theater Sub 8, BRAVIA Theater Sub 7, and BRAVIA Theater Rear 9. These new products are designed and engineered to create a wider, more immersive surround sound field for deeper cinematic impact. The BRAVIA 3 II LED TV, a mid-tier TV, is available in sizes up to 100 inches for a big-screen experience at home.

The new BRAVIA Theater Bar 7 brings a compact, yet powerful design equipped with nine speaker units, including dedicated up-firing speakers and side speakers that create a noticeably wider sound field. Sony’s proprietary 360 Spatial Sound Mapping

technology (360SSM), provides immersive, cinema-style surround sound from a single soundbar, along with room-calibrated audio for an optimised listening experience. Users can further enhance their setup by adding optional subwoofers and rear speakers for deeper bass and a richer surround experience.¹ These upgrades also allow them to enjoy IMAX® Enhanced content at its full potential.² This makes BRAVIA Theater Bar 7 an ideal choice for customers new to home audio who care about sound quality and want a premium entry point.

The BRAVIA Theater Bar 5 is a 3.1ch system that is accompanied by a wireless subwoofer, delivering powerful bass, clear dialogue, and an excellent balance of performance and value. S-Force PRO Front Surround™, Vertical Surround Engine, and Sony’s unique upmixer technology create an enveloping, three-dimensional immersive surround sound for movies and TV.



Seamless Streaming & Endless Entertainment

Your All in One Projector for Epic Movies, Thrilling Sports & Immersive Gameplay



TK705i / TK705STi

Home Entertainment Projectors

4K
ULTRA HD
8.3M PIXEL

UPTO 30,000 Hrs
LED Light Source Life

3000
ANSI Lumens

CinematicColor™
Rec.709 98%
True-to-Life Colors

HDR PRO HDR10+
See More Details

Smart Image Adaptation

- Auto 2D Keystone
- Auto Focus in Seconds
- Auto Cinema Mode
- Digital Zoom
- Auto Screen Fit
- Auto Obstacle Avoidance
- Digital Shift
- Auto Eye Protection

USB-C
Display and Power Supply 30W

Smart Remote App
AR Projector Planner

Game Ready
HDMI 2.1
4K 60Hz / ALLM



Corporate Office: BenQ India Pvt. Ltd.
9B Building, IIIrd Floor, DLF Cyber City, DLF Phase III, Gurgaon, Haryana, India - 122002
Tel: +91 124-450 1400, Fax: +91 124-450 1400
www.BenQ.in | sales.enquiryin@BenQ.com | 1800 419 9979

TK705i & TK705STi comes with 3-years on-site warranty.
The LED light source is also covered by a warranty of 3 years or 5,000 hours whichever is earlier.

smart home expo

MUMBAI

28 • 29 • 30 APRIL 2026

Jio WORLD CONVENTION CENTRE

India's Largest Smart Home Technology Trade Show



TITLE PARTNER HAYTEL	POWERED BY EMI	TECHNOLOGY PARTNER KNX	PLATINUM PARTNER SONOS	PLATINUM PARTNER Cinebels	PLATINUM PARTNER PRO F X	PLATINUM PARTNER MIANTIC AV	PLATINUM PARTNER VINSHEK	PLATINUM PARTNER SMATO	PLATINUM PARTNER CP PLUS	PLATINUM PARTNER CAVITAK	PLATINUM PARTNER KEJ
PREMIUM PARTNERS											
AERO	RTI	marantz	basalte	SM	benq	EPSON	Optoma	FOCAL	DEVIALET	Yale	raylogic
Klipsch	THEORY	LOEWE	Smart Node	Smee	Jorsët	SONY	CASADGI	Schneider	ORIGIN	GALLO	Genj
rako	Sonus faber	JBL	DIGILUX-AI	KF1X		SOUND & VISION	MDT	moorgen	EverGlow	JR	ELAN
LAFIT	Qquba	modo	OFFICIAL MEDIA PARTNER SMARTHOME WORLD	KNOWLEDGE PARTNERS				SUPPORTING PARTNERS			
				LIDAI	COQ	CEDIA	IALD	csa	WAVE		

REGISTER TO VISIT www.smarthomeexpo.in

EXHIBITION • NETWORKING • PRODUCT DEMO • CONFERENCE • TRAININGS

FOR BOOKINGS, PLEASE CONTACT:

Monika Agnihotri +91 9321024581 | monika@smarthomeexpo.in
Bankim Laher +91 8591277084 | bankim.laher@india.messefrankfurt.com

ORGANISED BY: **WME** WORLD MEDIA & EXHIBITION | **messe frankfurt**