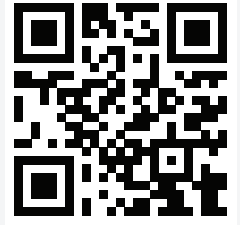


AN EXCLUSIVE MAGAZINE FOR THE SMART HOME INDUSTRY.

# SMARTHOME WORLD

VOL 7 • NO 01  
MAY 2026

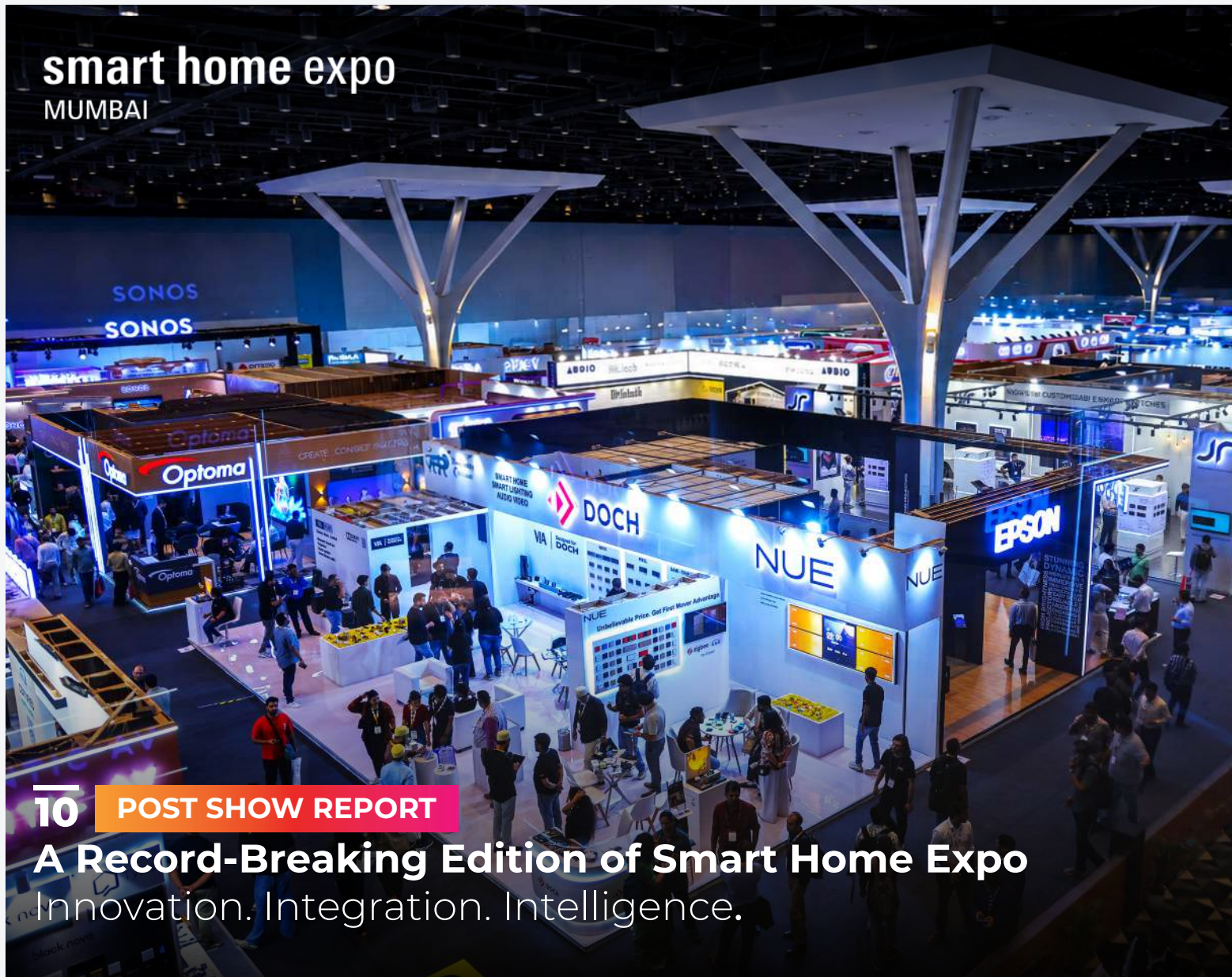
www.smarthomeworld.in



FOLLOW US ON



## smart home expo MUMBAI



### 10 POST SHOW REPORT A Record-Breaking Edition of Smart Home Expo Innovation. Integration. Intelligence.

INSIDE



#### INTERVIEW

**Pushkar Gokhale**

Business Head – Security Solutions Business, Godrej Enterprises Group, discusses the brand's innovative range and future vision.

60



#### INTERVIEW

**Rennie Addabbo**

General Manager, Sonos APAC, shares insights into Sonos's growing presence in India.

65

#### CASE STUDY

USK Electronics Experience Centre Showcases Immersive Smart Living Integration.

72

#### CASE STUDY

Litelab Transforms a Breakout Space with Dynamic Lighting and Intelligent Ambience.

78

#### BRAND PROFILE

Schneider Electric Advances Smart Living with Intelligent Automation and Next-Gen Connected Solutions.

82

EVERY DOOR DESERVES A

# dorsët



DIGITAL LOCKS

MORE SAFE. MORE SECURE.



# From Key to Keyless

Dive into the world of smart security with our complete digital lock range



## How would you like to secure your home?



Face Recognition



Palm Recognition



360° Fingerprint



Keypad Access



RFID Card



Mobile & OTP Access



Mechanical Key



Wi-Fi Enabled



AI Assisted Devices

**dorsëtcare**

Call at: 1800 11 4448

Follow us on:



FREE INSTALLATION



Dorset India



CONNECT ON WHATSAPP FOR MORE INFO



# Redefining Cinematic Brilliance

Experience the pinnacle of Laser Home Cinema Projection with Unmatched Color Accuracy in 100% DCI-P3

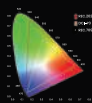


## W5800 | W5850

4K Home Cinema Laser Projector



CinematicColor  
100% DCI-P3



2100AL Brightness  
@ 100% DCI-P3

BLUE CORE  
LASER

1.6x  
Motorized  
Zoom Lens

Available at select Home AV System Integrators across India



Corporate Office: BenQ India Pvt. Ltd.

9B Building, III<sup>rd</sup> Floor, DLF Cyber City, DLF Phase III, Gurgaon, Haryana, India - 122002

Tel: +91 124-450 1400, Fax: +91 124-450 1400

www.BenQ.in sales.enquiryin@BenQ.com 1800 419 9979



Scan here to Book your Demo

W5800 / W5850 comes with 3-years on-site warranty.

The laser light source is also covered by a warranty of 3 years or 15,000 hours whichever is earlier.

www.BenQ.in Like BenQ India on

# CONTENTS

10



## 10 Post Show Report

Exclusive Coverage of Smart Home Expo 2026, one of the industry's most anticipated gatherings, bringing together leading brands, technology innovators, designers, and home automation and AV experts under one roof. The event witnessed an overwhelming response, reflecting the rapid evolution and growing influence of smart living technologies across the industry.

## 60 Interviews

In this exclusive interview, **Pushkar Gokhale, Business Head of the Security Solutions Business of Godrej Enterprises Group**, shares how Godrej Enterprises Group is redefining premium home security through AI-enabled surveillance, facial recognition lockers, smart access systems, and connected IoT ecosystems tailored for high-net-worth homeowners.

**Rennie Addabbo, General Manager, Sonos APAC** discusses how Sonos is strengthening its presence in India, the rising demand for professionally installed multi-room audio systems, and how immersive sound is becoming an essential layer in modern luxury homes.

## 72 Case Studies

**USK Electronics'** Experience Centre brings together AV, automation, and smart living in a fully immersive environment where visitors can experience integrated

technologies in real time, rather than as standalone solutions.

**Designed by Litelab**, this breakout space demonstrates a refined lighting approach that seamlessly transforms from a warm, intimate retreat into a vibrant entertainment setting through intelligent controls and integrated architectural lighting.

## 82 Brand Profile

Schneider Electric is strengthening its smart home and building portfolio with new advancements in intelligent automation, premium KNX solutions, energy efficiency, cybersecurity, and India-centric technologies tailored for connected living. Here's a closer look at the brand's latest innovations and vision for the future of smart spaces.

## 86 Expert View

Akshara Vyas writes on Light Years Theory, a platform designed to unify the global lighting community through shared knowledge, collaboration, and meaningful industry exchange.

## 89 News

Discover the latest industry updates, breakthrough innovations, and new product launches shaping the future of smart living and integrated technology.

# Say Goodbye To Service Calls



## WATT BOX

## OVR C

WattBoxpower products are not your average power strips.

Save your time & money with WattBox & OvrC remote troubleshooting capabilities.

### Self-Healing Auto Reboot

WattBox IP units continuously monitor connectivity, and when connection is lost, automatically reboots the troubled device.

### OvrC Remote Management

OvrC remote management allows for remote reboots of devices, firmware updates and more.

### Client-Facing Mobile App

Free app allows clients to reset any connected device, and easily contact their integrators for additional help.

ADI | **snap one**

Compatible With:

Control4

U-C  
Control the Experience.

RTI

ELAN

CRESTRON

Mahkam Poorviam Ventures Pvt Ltd #11, Global Heights, 8th Cross, Vijaya Bank Colony Banaswadi, Bangalore – 560043 Karnataka, India

INDIA DISTRIBUTOR FOR ADI-SNAPONE

Contact our team: ✉ Emails: [order@m2msmarthome.com](mailto:order@m2msmarthome.com) ☎ +91 95780 72459



No weak links, no loose ends.  
**Secure your interiors with Yale.**



USB port and Mechanical key for  
**EMERGENCY**

# Smart Interior Lock YDL325 Series



Yale Home

Yale Home  
Connectivity



Built-in **Bluetooth**



YDL325 S



YDL325 C

For more inquiries please  
WhatsApp **6387 409 260**  
Email: [Customer\\_Enquiry.India@assaabloy.com](mailto:Customer_Enquiry.India@assaabloy.com)

**24/7**  
365 DAYS

**TOLL FREE NO**  
**1800-103-5606**  
[www.yalehome.com](http://www.yalehome.com)





# From Home to Commercial Cinema – Your Only Digital Amplification Partner



AES67



DSP / FiR / iiR



SWATI BALGI

## FROM THE EDITOR

As the 7th edition of Smart Home Expo 2026 comes to a close, the event once again proved why it has become one of the most influential platforms for the smart living and automation industry. Bringing together leading brands, technology innovators, designers, integrators, and industry experts, this year's expo was larger, more dynamic, and more engaging than ever before. For those who missed the event, this special post-show report brings together some of the most important highlights, conversations, and innovations that shaped the experience.

More than just a showcase of products and technology, the expo became a space for learning, exchange, and inspiration. Architects, interior designers, consultants, developers, and system integrators took away fresh ideas, updated industry knowledge, and a closer understanding of the latest advancements across automation, lighting, AV, security, AI, and connected living. It was an opportunity to discover technologies that could redefine future projects and to experience firsthand how seamlessly technology is becoming integrated into modern lifestyles.

In this issue, we feature exclusive conversations with Pushkar Gokhale, who shares insights into the future of AI-enabled home security at Godrej Enterprises Group, and Rennie Addabbo, who discusses the growing demand for immersive audio experiences and Sonos's expanding presence in India.

The issue also showcases inspiring case studies, including the immersive USK Electronics Experience Centre and a thoughtfully designed lighting-led breakout space by Litelab. We also take a closer look at how Schneider Electric is strengthening its smart home and automation portfolio, while Akshara Vyas shares her thoughts on Light Years Theory and the importance of collaboration within the global lighting community.

Enjoy reading and get back to us with your feedback.

# SMARTHOME<sup>TM</sup> WORLD

FOLLOW US ON



### Chief Editor:

Swati Balgi  
swati@smarthomeworld.in

### Assistant Manager - Sales:

Monika Agnihotri  
monika@smarthomeexpo.in

### Marketing Head:

Sandeep Singh  
sandeep@smarthomeworld.in

### Tech Journalist:

Sunny Sawant  
sunny@smarthomeworld.in

### For More Information Contact Us:

+91 81690 58048



### Published by:

WORLD MEDIA & EXPO LLP.

Ecostar, 603, Vishveshwar Nagar Road, Churi Wadi, Goregaon (East)  
Mumbai, Maharashtra 400063

Smart Home World thanks the various companies that have submitted information. For any editorial submissions, please contact Ms. Swati Balgi, Chief Editor: swati@smarthomeworld.in. The information published in News, Ongoing Trends and Product Gallery is as per the details furnished by the respective manufacturer/distributor. It does not reflect the views of Smart Home World or of the management of WORLD MEDIA & EXPO LLP.



# YOUR PROJECTION SCREEN COMPANY

## GET THE BIG PICTURE. EVERY TIME.



**PREMIUM SCREEN MATERIAL.  
PERFECT PICTURE. EVERY TIME.**

Wide selection of Projection screen material for Standard Throw, Short Throw and Ultra Short Throw Projection.



### PROJECTION SCREEN MATERIAL:

CineWhite, Max White,  
Ambient Light Rejection CLR,  
Acoustic & ALR Acoustic.



### A GLOBAL LEADER. A TRUSTED BRAND.

The leading brand with  
Factories in India, California,  
Vietnam & China with  
Global wide Sales &  
Service Net work.



### SCREEN SOLUTIONS FOR EVERY NEED:

Fixed Frame Screens,  
Electric Screens,  
Manual & Electric Floor-Up Screens,  
Outdoor Projection Screens.



**THE ONLY GLOBAL BRAND  
HAVING MANUFACTURING,  
MARKETING AND AFTER  
SALES SERVICE IN INDIA.**



**SUPERIOR  
IMAGE QUALITY**



**WIDE VIEWING  
ANGLE**



**HIGH CONTRAST  
PERFORMANCE**



**DURABLE  
& RELIABLE**

**POWERED BY ADVANCED GLOBAL MANUFACTURING FACILITIES ACROSS FOUR NATIONS**



CALIFORNIA



INDIA



VIETNAM



CHINA



**GET THE BIG PICTURE**

Vision works | 2nd cross | Plot No. 39 | Codissia Industrial Park | Kallapalayam | Coimbatore 641201  
Mob: 9487758161 Tel: 0422 7141699

[www.elitescreens.com](http://www.elitescreens.com) | [www.elitescreensindia.com](http://www.elitescreensindia.com) | Email: [india@elitescreens.com](mailto:india@elitescreens.com)

# smart home expo

## MUMBAI

Smart Home Expo 2026:  
Where Brands, Experts &  
Innovation Converge.



- EXHIBITION
- NETWORKING
- PRODUCT DEMO
- CONFERENCE
- TRAININGS



# POST EVENT REPORT



[www.smarthomeexpo.in](http://www.smarthomeexpo.in)



## INDUSTRY LEADERS UNITED

(From L to R) Winston Pereira, Executive Director, Messe Frankfurt Trade Fairs India; Raj Manek, Executive Director and Board Member, Messe Frankfurt Asia Holdings Ltd; Ketan Sheth, Chairman, IIID MRC; Jignesh Modi, National President, IIID; Sandeep Singh, Director, Smart Home Expo; Jimmy Mistry, Founder & Chairman, Della Townships and Founder, Della Group; Pushkar Gokhale, Business Head - Security Solutions Business, Godrej Enterprises Group; Sumant Bhatia, General Manager, Havells India Ltd; Himanj Gupta, Assistant Vice President, Havells India Ltd; Wendy Griffiths, Senior Vice President of Membership and Global Development, CEDIA; Luv Malik, Partner, Luxury Personified; Johannes Moller, Group Show Director - Building Technologies Shows, Messe Frankfurt GmbH; Richard O'Carroll, Senior Professional Commercial Manager, APAC, SONOS; and Vinayak Paradkar, Director, Smart Home Expo.

# INAUGURATING THE FUTURE OF SMART LIVING

## SMART HOME EXPO 2026

Smart Home Expo 2026 spotlighted the latest innovations in smart home technology, home automation, immersive audio-visual systems, and intelligent building solutions, further accelerating India's Smart Technology ecosystem.



Mumbai witnessed an electrifying convergence of technology, innovation, and design as the **7th edition of Smart Home Expo 2026** concluded on a spectacular high at the Jio World Convention Centre. Reinforcing its position as India's largest and most influential platform for smart home technology, building automation, smart lighting, security, and AV solutions, the expo brought together over **12,570** verified visitors and **450+** leading global brands under one roof.

The momentum this year was stronger than ever. According to the analytics report, overall visitor footfall recorded an impressive 11.37% growth compared to the previous edition, reflecting the rapidly expanding smart technology ecosystem and the industry's growing confidence in the platform.

A remarkable 73.8% of attendees were pre-registered visitors, highlighting strong brand recall, high engagement, and increasing customer loyalty within the industry. The show also demonstrated its truly global and nationwide reach, attracting visitors from 24 countries, 27 states and union territories, and 257 cities, with western India emerging as the highest contributing region.

From next-generation home automation and intelligent building solutions to immersive AV experiences and connected living technologies, Smart Home Expo 2026 once again established itself as the ultimate destination for innovation, networking, and business opportunities in the smart technology industry.



Co-organised by World Media & Expo LLP and Messe Frankfurt, the event reflected the rapid evolution of India's smart technology ecosystem, with live demonstrations, integrated experiences, and future-focused innovations taking centre stage.

The inauguration ceremony set the tone for the three-day showcase, with **Jimmy Mistry, Founder & Chairman, Della Townships and Founder, Della Group**, attending as the Chief Guest. Joining him were several prominent industry leaders and dignitaries, including **Raj Manek, Executive Director and Board Member, Messe Frankfurt Asia Holdings Ltd**; **Sandeep Singh, Director, Smart Home Expo**; **Vinayak Paradkar, Director, Smart Home Expo**; **Winston Pereira, Executive Director, Messe Frankfurt Trade Fairs India**; **Jignesh Modi, National President, IIID**; **Ketan Sheth, Chairman, IIID Mumbai Regional Chapter**; **Sumant Bhatia, General Manager, Havells-Crabtree Automation & Controls**; **Pushkar Gokhale, Business Head – Security Solutions Business, Godrej Enterprises Group**; **Wendy Griffiths, Vice President of Membership and Global Development, CEDIA**; **Luv Malik, Partner, Luxury Personified**; **Himani Gupta, Assistant Vice President, Havells India Ltd**; **Johannes Möller, Group Show Director – Building Technologies Shows, Messe Frankfurt GmbH**; and **Richard O'Carroll, Senior Professional Commercial Manager, APAC, SONOS**.

Smart Home Expo 2026 was supported by a strong lineup of partners across key categories, reflecting the scale and industry relevance of the event. **Havells India joins as the Title Partner, Electronics Mart India Limited (EMIL) as the Powered By Partner, and KNX National India as the Technology Partner. Together, these partnerships reinforce the expo's focus on smart technology, innovation, and design across residential and commercial spaces. The Platinum Partners include Sonos, Cinebels, PRO FX, Miantic, Vinshek, Smato**

**Technologies, CP PLUS, Cavitak, and KEI. The Premium Partners lineup includes Aero, RTI, Marantz, Basalte, GM Modular, BenQ, Epson, Optoma, Focal Powered by Naim, Devialet, Yale, MZ Audio Distribution, Klipsch, Theory, Loewe, Smart Node, James Loudspeaker, Dorset, Sony, Casadigi, Schneider Electric, Audio One, Gallo Acoustics, Godrej Locks, Rako Controls, Sonus Faber, JBL, DigiLux AI, Krix, L-Acoustics, Sound & Vision, MDT, Moorgen, EverGlow, JR Automation Technology, ELAN by Nice, LAFIT, Quba, Modo, Origin Acoustics, Sonodyne, Raylogic Control Systems, Dahua Technology and Unwired Connect.**

Their presence highlighted the growing importance of intelligent living solutions and collaborative innovation in shaping the future of modern homes and buildings.





Addressing the audience during the inauguration, Jimmy Mistry said, "Technology and automation are interwoven for human-centric design, and what is today's luxury is going to be tomorrow's necessity. This is only the beginning, with mass adoption of automation now reaching rural India. India is very good at leapfrogging, and no manufacturer can afford to overlook India as we move rapidly at scale. Smart Home Expo is far bigger than imagined and will only grow exponentially. It is unfair to judge it by footfalls, as the transactions that will happen through this will be far more significant. I think this industry is poised for 20%–25% YoY growth and will continue to scale ahead."

With every edition, Smart Home Expo continues to expand its influence beyond a traditional trade exhibition, evolving into a dynamic industry hub that drives conversations around sustainability, integration, cybersecurity, design innovation, and the next generation of smart living experiences.

What truly distinguished this year's edition was the scale of engagement and the quality of conversations taking place across the show floor. Architects, developers, system integrators, consultants, designers, technology leaders, and homeowners came together to explore how automation, AI-driven systems, interoperability, cybersecurity, and sustainable design are shaping the next era of smart living.

As India's appetite for connected technologies continues to grow, Smart Home Expo 2026 has firmly established itself not just as an exhibition but as the country's leading catalyst for innovation, industry collaboration, and the future of intelligent living.



### Strategic Alliances & Industry Partnerships

Smart Home Expo 2026 was supported by a broad partner ecosystem from various segments and associations. Right from the Knowledge Partners include **Indian Institute of Interior Designers - Mumbai Regional Chapter (IIID-MRC), Lighting Designers Association of India (LIDAI), Council of Architecture, CEDIA, and International Association of Lighting Designers (IALD), while Connectivity Standards Alliance (CSA), Z-Wave Alliance, and Electronic Security Association of India (ESAI), INBAC Association, and IGBC** who came on board as Supporting Associations. Together, these associations and industry bodies strengthen a larger ecosystem around the expo, bringing greater visibility to standards, design, interoperability, and industry collaboration.

# INNOVATION CONNECTION TRANSFORMATION

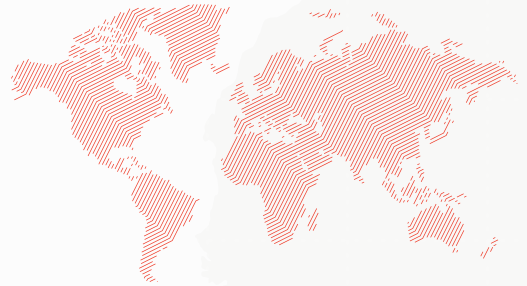


## VISITORS



# 12,570

TOTAL NUMBER OF VISITORS



## 450+

BRANDS



## 150+

NEW PRODUCTS  
LAUNCHES



## 15800

TOTAL SQUARE METERS  
OF THE EXHIBITION SPACE

## WHAT MADE THE EXPO REMARKEBALE



DIVERSE INDUSTRY  
PARTICIPATION



CUTTING-EDGE  
INNOVATION



VALUABLE BUSINESS  
NETWORKING



REAL-WORLD APPLICATIONS  
& SOLUTIONS



home technology and automation. There was a time when global manufacturers overlooked India, but today no international brand can afford to ignore this market.

The industry is poised for tremendous growth, easily 20 to 25 percent YoY, driven by rising demand for connected living and smart automation solutions.

The expo itself exceeded expectations. The scale, quality of brands, and level of participation were remarkable. More importantly, the value of the B2B interactions and collaborations goes far beyond footfall numbers. I truly believe this platform will continue to grow exponentially, attracting more global players and creating stronger ecosystems around audio, lighting, automation, and smart technologies.

**Jimmy Mistry, Founder & Chairman, Della Townships and Founder, Della Group**

What I witnessed at Smart Home Expo 2026 is only a glimpse of what the future holds. Technology and automation are becoming deeply integrated with human-centric design, and with AI accelerating innovation, the way we live is set to transform dramatically.

What is considered a luxury today will soon become a necessity. India has always excelled at leapfrogging traditional growth patterns, and the same shift is now happening in smart





it brings together some of the finest global brands, outstanding exhibitors, cutting-edge technologies, and an incredible level of professionalism. The quality of the booths, the energy across the show floor, and the passion of the people here are absolutely remarkable.

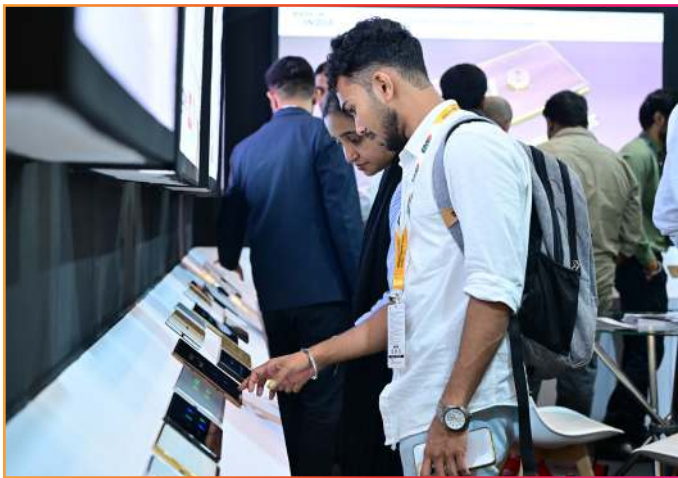
What impresses me the most is the enthusiasm for learning, innovation, and growth within the industry. You can clearly see that this platform is not only showcasing products but also building a stronger ecosystem through education, training, and collaboration.

If you haven't attended Smart Home Expo before, I would strongly encourage you to plan for Smart Home Expo 2027. This show is only going to grow bigger, stronger, and more influential in the years ahead.

**Peter Aylett, Partner, Officina Acustica**

Having spent over 36 years in this industry, I've had the opportunity to attend and teach at some of the biggest trade shows around the world. I've also been part of every CEDIA Expo since 2005, so I've seen the industry evolve over decades. And I can genuinely say that Smart Home Expo is truly a world-class exhibition.

This is not just another regional trade show;



# 12570

VISITORS OVER 3 DAYS



5 CONTINENTS

24 COUNTRIES



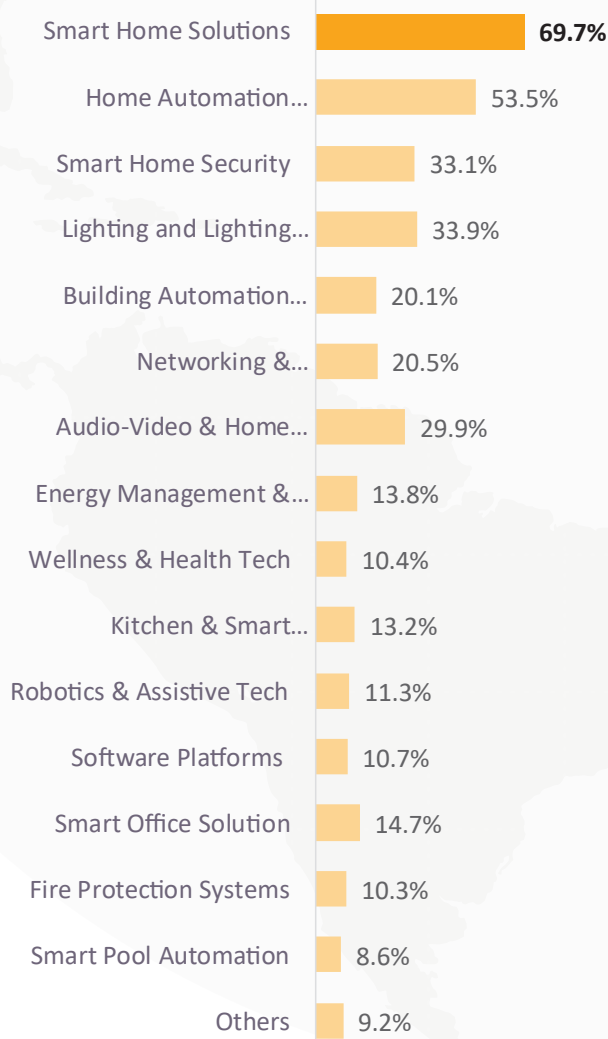
75% of the visitors were from the western part of India

27 STATES & UT's

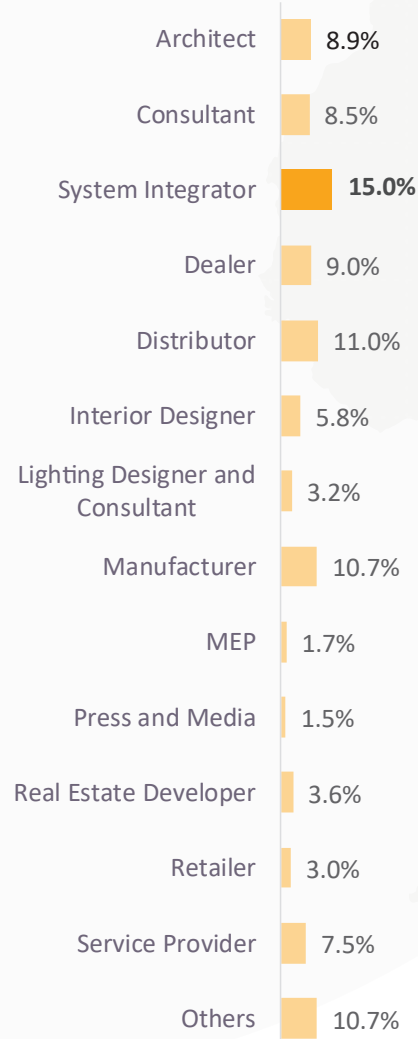
257 CITIES

## PRODUCTS OF INTEREST

(multi-select)



## NATURE OF BUSINESS



# PRODUCT CATEGORIES SHOWCASED AT SMART HOME EXPO 2026



SMART HOME TECHNOLOGY



SMART BUILDING SOLUTIONS



HOME AUTOMATION



AUDIO-VIDEO SOLUTIONS



CONSUMER ELECTRONICS



SMART LIGHTING & CONTROL



SMART HOME SECURITY



SMART HOME PRODUCTS

# KNX Pavilion Delivered the Ultimate Open Automation Experience



The KNX Pavilion emerged as one of the biggest crowd-pullers at Smart Home Expo 2026, delivering a powerful showcase of real-time interoperability, intelligent integration, and future-ready automation technologies.

Featuring 22 leading global and Indian brands across lighting, HVAC, energy management, security, shading, and smart controls, the pavilion demonstrated how multiple manufacturers can seamlessly operate together through a single open KNX protocol — without proprietary lock-ins. This live ecosystem experience highlighted why KNX continues to dominate the future of intelligent buildings and luxury automation worldwide.

This year's edition witnessed the participation of several new international and national brands, including **GVS, AYPRO, Atios, LogicMachine, Mean Well, Interra, Inspinia, TheBen, ILevia, Bab Technologie, Steinel, Integron, ABB, ControlTronics, Cue Home, Goldmedal, NetX Automation, Schiender, Intesis, Digilux Automation Pvt Ltd, Future KNX, and Weinzierl.**

Several of these brands are entering the Indian market for the very first time through the KNX Pavilion, which speaks volumes about the credibility this platform has built and the confidence the global KNX community now has in India.



# CEDIA Workshops Elevated Professional AV Learning

CEDIA brought world-class technical education to Smart Home Expo 2026 through two advanced hands-on workshops focused on immersive audio engineering and professional system calibration.

Led by globally renowned AV experts like Adam Pelz and Peter Aylett, the workshops attracted integrators, consultants, designers, and AV professionals seeking deeper technical expertise in high-performance private cinema and immersive audio environments.

The Immersive Audio & Acoustic Design Workshop (RP22) transformed the Jio World Convention Centre into a live learning lab, where participants explored advanced concepts in acoustic strategy, loudspeaker placement, low-frequency optimisation, and

immersive environment design through practical real-world applications.

Meanwhile, the Audio System Measurement & Verification Workshop (RP32) delivered an intensive deep dive into professional-grade calibration and acoustic measurement techniques. Attendees gained hands-on exposure to advanced tools, workflows, and performance verification methodologies essential for delivering world-class AV installations.

Together, these sessions reinforced Smart Home Expo's evolution beyond an exhibition platform—establishing it as one of India's most influential hubs for technology education, professional upskilling, and future-focused industry knowledge.



## Audio-Video Demo Rooms Delivered Immersive Entertainment Experiences

Driven by phenomenal visitor response, the Audio-Video Demo Rooms emerged as one of the biggest highlights and most engaging attractions at Smart Home Expo 2026. These immersive experience zones offered attendees a rare opportunity to witness the latest innovations in luxury home cinema, cutting-edge projection technologies, and reference-grade audio performance in real-world environments.

From breathtaking Dolby Atmos demonstrations and high-fidelity sound systems to ultra-premium AV setups engineered for truly immersive entertainment, the demo rooms showcased how next-generation technologies are redefining modern home experiences.

Beyond the sensory impact, the live



demonstrations also underscored the critical role of precision calibration, acoustic engineering, and seamless system integration in creating world-class cinematic and audio environments.

## A Premier Platform for International Collaboration

One of the most powerful highlights of Smart Home Expo 2026 was the extraordinary scale of global networking, collaboration, and industry engagement it unlocked. Bringing together leading brands, innovators, technology pioneers, and decision-makers from the US, UK, Europe, and several international markets, the expo transformed into a high-energy global hub for smart home innovation, strategic partnerships, and next-generation technology exchange. The expo became a dynamic crossroads where global innovation met India's rapidly expanding connected living ecosystem, sparking new collaborations, business opportunities, and future-ready conversations shaping the industry ahead. The show floor witnessed an unmatched gathering of industry leaders and visionaries driving the future of intelligent living.

With its unparalleled networking opportunities, global industry presence, and innovation-led ecosystem, Smart Home Expo 2026 firmly established itself as far more than an exhibition — evolving into one of the most



influential international platforms for smart home, automation, and connected living technologies.

# IIID CEP at Smart Home Expo 2026 Inspires the Design Fraternity

In partnership with Smart Home Expo 2026, the Continuing Education Program (CEP), jointly organised by the Indian Institute of Interior Designers - National Executive Committee (NEC) and the IIID Mumbai Regional Chapter, was held at the Jio World Convention Centre on 28th April 2026. Centred around the theme "CEP 3: AI-Powered Interiors," the program emerged as a highly enriching and impactful knowledge-sharing platform for the design fraternity.

The event witnessed an overwhelming response, with over 160 attendees, including 152 registered participants representing 21 IIID Chapters and Centres from across the country. The enthusiastic participation reflected the institute's ongoing commitment towards professional learning, collaboration, and meaningful industry engagement.

The program commenced with a warm welcome address by Ar. Alhad Gore, setting the tone for an engaging and insightful day. Ar. Vaishali Pradhan, Folio Head – CEP/CPDP, introduced the vision and objectives behind the Continuing Education Program, emphasising the importance of continuous professional development within the design community. The gathering was further addressed by IIID National President Ar. Jignesh Modi, who encouraged participants to actively engage in knowledge-sharing and collective growth.

The technical sessions conducted by Ar. Sahil Tanveer, Ar. Rishikesh Vinchurkar, and Ar. Vivek Bhole offered valuable industry perspectives and thought-provoking discussions, providing attendees with fresh insights into contemporary design practices, emerging technologies, and evolving industry trends. Adding a practical and experiential dimension to the program, the hands-on workshop led by Ar. Rishikesh Vinchurkar received an enthusiastic response, encouraging active participation and applied learning.

The event successfully fostered meaningful dialogue, professional exchange, and creative inspiration among members of the fraternity. Participants also had the opportunity to



explore Smart Home Expo 2026, hosted within the same venue, further enhancing the overall learning experience through exposure to innovative technologies, smart solutions, and products shaping the future of design and living spaces.

Supported by Smart Home Expo 2026 and hosted under the leadership and guidance of Id. Ketan Sheth, Chairperson of the IIID Mumbai Regional Chapter, along with the dedicated support of the IIID MRC Core Committee Members, the CEP stood as a testament to IIID's vision of fostering professional excellence, continuous learning, and meaningful industry engagement within the interior design community. Special acknowledgement was extended to Ar. Alhad Gore and Ar. Vatsal Joshi for their dedicated efforts in curating and facilitating the program.

# PROFESSIONAL VIEWPOINTS AND INDUSTRY FEEDBACK



panel discussion alongside several esteemed panellists. The conversations around connected homes, AI-driven technologies, intelligent living, and the future of smart ecosystems were incredibly insightful and very close to my heart.

What makes Smart Home Expo truly special is the way it encourages meaningful discussions around the future of smart living while showcasing cutting-edge innovations that are shaping the industry.

I wish Smart Home Expo continued success and growth in the years ahead.

**Himani Gupta, Asst. Vice President,  
Havells India Ltd**

This is my first time attending the exhibition, and I have truly loved every moment of the experience. It has been wonderful to be part of such an exciting platform that brings together innovation, technology, and industry expertise under one roof.

I also had the opportunity to participate in a



What I personally enjoyed the most was listening to the perspectives of architects and designers. As a brand representative, these interactions are extremely valuable because they help us better understand how people envision smart living and how we, as solution providers, can evolve to meet those expectations more effectively.

The discussion was insightful, engaging, and filled with practical ideas about the future of automation and smart spaces. I'm really glad to have been part of it, and I look forward to many more such meaningful conversations at Smart Home Expo.

**Rajesh Sharma, Director – Marketing,  
GM Modular**

We work extensively in electrical and automation solutions. Being part of a panel discussion was a truly enriching experience. The conversation revolved around how automation is gradually becoming an essential part of everyday life, making homes and spaces more intuitive, efficient, and comfortable for users.



We have been participating in Smart Home Expo for the past five years, and it continues to be an excellent platform for us to showcase and launch innovative products and solutions. This year as well, we introduced three state-of-the-art solutions developed through extensive research, consumer insights, innovation, and R&D.

It has been wonderful being part of Smart Home Expo once again, and we look forward to continuing this journey of innovation and smarter living solutions.

**Pushkar Gokhale, Executive Vice President and Business Head, Godrej Enterprises Group**

The panel discussion today was a fantastic platform to talk about the importance of integrated security and create greater awareness around why security should be an essential part of every smart home.



The experience over the last two days has been absolutely phenomenal. Smart Home Expo continues to be an exceptional platform to connect with consultants, customers, system integrators, and industry leaders from across the ecosystem. What truly stands out is the sheer scale of innovation on display. From intelligent automation to immersive AV experiences and cutting-edge lighting solutions, the technologies showcased here are both inspiring and future-ready.

**Premika Chandrasekaran, Director, Home Solutions and E-commerce, Schneider Electric**



This is my second trip to India, but my first visit here as an instructor and educator. I am genuinely fascinated by the passion and enthusiasm I see within the Indian integration community. The eagerness to learn and grow reminds me of what I witnessed in the United States 15 to 20 years ago.

The opportunities in India are tremendous, and I would encourage integrators here to continue striving for professionalism, positioning themselves as equal collaborators alongside architects, engineers, and other professionals within the built environment ecosystem.

**Adam Pelz, Owner & President, Bespoke Cinemas**



It was encouraging to see such strong participation from industry professionals, partners, and customers, all coming together to exchange ideas and perspectives on the future of automation and connected ecosystems. The response at Smart Home Expo has been extremely positive. We have seen tremendous visitor engagement across the pavilion, with customers showing great interest in the latest innovations and smart solutions on display. Events like Smart Home Expo play a very important role in driving awareness, collaboration, and adoption within the smart home and building technology industry, and it has been a wonderful experience being part of it.

**Chaitanya Vuyyuri Narayana Satya, Sr GM - BU Strategy & Offer Head, Schneider Electric**



It was a nice experience moderating a session and exploring different perspectives on creating immersive entertainment experiences, even within compact spaces. The session was a great eye-opener and highlighted how thoughtful design and the right technology can make high-quality home cinema experiences possible for every kind of space.

**Tanmay Mehta, YouTuber & CEO, TappAV by Touchwood**



Being part of Smart Home Expo has always been a wonderful experience for us. We've been associated with the event since its very first edition, and it continues to be an incredible platform for exhibiting, connecting, and networking with the industry. This year was especially memorable as we were honoured with the award for the Megastructure Project category for the Mumbai International Cruise Terminal.

**Bhavesh Doshi, Founder, Entelechy Systems**



It is always a pleasure to be at Smart Home Expo. Our firm strongly believes in creating smart spaces, and technology has always given us a distinctive edge in our design approach.

From being recognised as winners in two categories last year to being part of a panel discussion this year, it has truly been an amazing association with the organisation. The platform continues to bring together innovation, technology, and design in a very inspiring way.

**Ar. Mihir Kotak, Co-Founder & Principal Architect, 4th Dimension**



We had a truly engaging panel discussion, and I encourage everyone to attend and participate in such conversations. Our session, Designing for the Ears: The Role of Immersive Audio & Video in Modern Interiors, powered by CEDIA, highlighted how immersive audio and visual technologies are no longer just add-ons, but an essential part of modern interior design. It was insightful to exchange perspectives on how technology, acoustics, and human-centric design are coming together to shape more intuitive and experiential living spaces.

**Sawan Nichani, Founder, MCBEE**



This year, Smart Home Expo introduced an innovative workshop format focused on different segments such as hospitality lighting, residential lighting, retail lighting controls, and office lighting controls. The sessions were highly interactive, and it was great to see the audience actively engaging with questions and discussions around lighting design and control solutions. We were able to guide attendees with practical insights and suitable solutions, making the sessions both informative and meaningful. Smart Home Expo continues to introduce fresh and innovative concepts every year, which greatly benefits both the audience and professionals like us working in the field of lighting design and controls.

**Sushant Surve, Founder and Principal Designer, Brainwave Designs**



It was a wonderful experience being part of Smart Home Expo. We had an engaging session and workshop in collaboration with lighting designers, focused on sharing insights and practical knowledge with the audience. It was a meaningful learning experience and a great platform to exchange ideas around lighting, automation, and luxury living.

**Nikhil Patel, Head, Hospitality Segment India & South Asia Region, Lutron Electronics**



As a company, our vision is to enable a smarter, safer, and better life through technology, and we are happy to see platforms like Smart Home Expo driving the industry forward in such a meaningful way. We wish the exhibition continued success and look forward to growing together with this dynamic ecosystem.

**Lucas Wong, Innovative Business Head For South Asia, Dahua Technology**



spaces. It was a great session with engaging conversations, excellent fellow panellists, and valuable perspectives from across the industry.

The exhibition itself has been fantastic, with an amazing energy throughout the venue. There is a great buzz around the show, and it has been wonderful to see so many visitors engaging with our booth and experiencing our immersive solutions firsthand.

Thank you for having me, and I look forward to being back again next year.

**Nick Fichte, Business Development Director - Home & Yacht - Global, L-Acoustics**

This is my second time attending the show, and it continues to be an incredible experience.

I've just finished participating in a panel discussion that explored some very relevant and insightful topics around designing immersive experiences within compact



We manufacture and represent several premium audio brands, including Elipson, one of the oldest French speaker brands. We are participating in Smart Home Expo through our Indian distributor, MZ. This is my first time attending the show, and I am truly impressed by the scale of the exhibition, the number of visitors, and the wide range of innovative products and brands being showcased here.

It was also a great experience participating in the panel discussion alongside fellow industry experts. The topic of designing home theatre solutions for compact spaces was particularly relevant and insightful, and it was interesting to exchange ideas and perspectives on how immersive experiences can be created even within smaller environments.

**Vincent Laigle, General Manager, AV Industry**



This is my second time attending Smart Home Expo, and I must say I am extremely impressed by how the show has evolved. The quality of the exhibition, the stands, and the people participating have all been exceptional.

It is incredible to witness how rapidly the Indian home integration market has matured and grown over the years. I also had the opportunity to be part of a panel discussion on cinema design for compact spaces alongside several industry experts. It is a very important topic, and I believe conversations like these help educate and guide homeowners in making the right choices when it comes to immersive entertainment and smart home solutions best suited to their spaces."

**Sohan Perera, Founder and CEO, Link Media Systems (LMS)**



I'm truly enjoying my experience at Smart Home Expo. It is a fantastic exhibition, and it has been a real pleasure to be here in Mumbai. Over the last day and a half, the event has been exceptionally well organised, with an incredible atmosphere and strong industry participation.

I also had the opportunity to be part of a panel discussion alongside several highly knowledgeable industry experts. It was a wonderful experience listening to different perspectives on how smart home technologies are influencing businesses and shaping the future of connected living.

Events like these create meaningful opportunities for collaboration, learning, and future business growth. Thank you for having us here — we will definitely look forward to coming back next year. Congratulations to the entire team on a great exhibition.

**Alex Foxon, International Product Ambassador, DALI**



This is my first time attending Smart Home Expo, and I am truly impressed by the scale of the exhibition, the range of innovative products on display, and the opportunity to present our brand in the Indian market. It has been a wonderful experience, and I have thoroughly enjoyed being part of the show. I also had a great experience participating in the panel discussions. The sessions were highly informative, engaging, and valuable for both industry professionals and attendees. I would strongly encourage visitors to attend these discussions, as they provide excellent insights into the latest trends, technologies, and future developments within the smart home and AV industry.

**Markus Pieprznik, Head of Sales, BEC Akustik**



I'm here at Smart Home Expo, and I must say this is truly a one-of-a-kind exhibition. The event showcases some of the best innovations in home automation, smart technologies, and audio-visual solutions from across the industry.

I would strongly encourage everyone to visit and explore the exhibition. Platforms like Smart Home Expo provide a unique opportunity to experience world-class technology, interact with industry experts, and understand the future of smart spaces and connected living.

**Ar. Manish Dikshit, Founder, Aum Architects**



increasing adoption of smart technologies across the market.

The industry is progressing at a remarkable pace, and we are extremely enthusiastic to be part of this exciting journey. It is encouraging to see more consumers, professionals, and brands embracing smart and connected living solutions.

This year as well, we are showcasing several new launches and innovative products at our booth.

We wish Smart Home Expo continued success and look forward to seeing it scale even greater heights in the years ahead.

**Sumant Bhatia, General Manager,  
Havells India Ltd**

This marks our fifth participation at Smart Home Expo, and we have proudly partnered with the exhibition since its very beginning.

Over the years, it has been incredible to witness the growth of the show, from an event that started with just 25 to 30 participants to the large-scale industry platform it has become today. The evolution of Smart Home Expo clearly reflects the rapid growth and



I am delighted to be here at Smart Home Expo 2026. I also had the opportunity to be part of the speaker panel at the event.

It is an amazing platform that showcases a wide range of new technologies and innovative solutions. What makes the exhibition especially exciting is the way technology, aesthetics, and sustainability are seamlessly brought together under one roof.

**Kulin Kapadia, Principal Founder,  
Alcove Designs**



It has been a pleasure to once again be part of Smart Home Expo this year. We had an engaging panel discussion focused on security systems and how the future of smart and secure living is evolving. It was a wonderful experience sharing the platform with industry stalwarts and fellow professionals, exchanging insights and perspectives on the direction the industry is heading.

Looking at the way the exhibition and conference are evolving, I truly believe Smart Home Expo is on its way to becoming one of the finest industry platforms in India.

**Ar. Ketan Jawdekar, Founder & Principal,  
Studio K-7**



experiences is shaping the future of smart living. It is also fascinating to see how naturally people are becoming more comfortable with AI and intelligent technologies.

What truly stands out to me is the idea of 'invisible intelligence' technology that quietly works in the background to enhance comfort, convenience, and efficiency without disrupting the overall experience.

Being here has given me many new perspectives on how automation, AI, and design can come together to create more intuitive and meaningful spaces.

**Mahima Mistry, Principal Designer, House of Mistry**

One of my biggest takeaways from Smart Home Expo is that automation is no longer seen as a novelty; it is becoming an essential part of the way we live and interact with our spaces.

Today, anything that simplifies daily life, reduces human effort, and creates seamless



Smart Home Expo is a fantastic platform where people can actually experience the technologies and solutions that can transform their homes, offices, and everyday lifestyles. Year after year, the exhibition continues to evolve, upgrade itself, and raise the bar in terms of innovation and industry engagement. It is always wonderful to be part of Smart Home Expo, and it was an absolute honour to participate in the panel discussion as well.

**Shami Goregaoker, Design Director, GA Design, Mumbai**



I am very excited about participating in Smart Home Expo and entering the Indian market for the first time. We are extremely encouraged by the relationships we've built here at the show and look forward to bringing our unique approach and expertise to this region.

As for the exhibition itself, it has been incredibly impressive. Since this is my first visit to India, I wasn't entirely sure what to expect, but the market here is remarkably mature and sophisticated. It's also great to see so many leading global brands represented at the show.

**Darren Barker, Design Director, Cinema Luxe**



We had a wonderful and engaging session at Smart Home Expo 2026. It was a great opportunity to connect with industry experts, exchange ideas, and gain valuable insights from one another. Discussions around emerging technologies, evolving consumer expectations, and the future direction of the industry made the experience especially enriching. Events like Smart Home Expo play an important role in bringing the industry together.

**Hasaan Kadli, Founder and CEO, Modo**



Today, through platforms like Smart Home Expo, it is evident that we are all collectively contributing towards the advancement of smarter buildings and intelligent living spaces. The entire industry is steadily moving towards future-ready and sustainable solutions that will redefine the way we design and experience built environments. It is a wonderful expo, and it is great to see the industry coming together on such a strong platform.

**Mehul Joshi, Associate Consultant,  
AR Tech Engineering Solutions LLP**



Smart Home Expo is a remarkable show, and I have been attending it for several years now. Every edition continues to get better and more impressive. Looking at the exhibition floor today, it is beautifully curated and extremely useful for industry professionals to explore the latest products, technologies, and solutions that can be integrated into modern buildings and smart spaces.

**Sakhee Chandrayan, President,  
INBAC Association**



It is wonderful to be here at Smart Home Expo 2026 and witness such a large-scale exhibition showcasing innovative solutions and cutting-edge products. I also had the opportunity to participate in a panel discussion, where sustainability emerged as a key focus area in our conversations. It was encouraging to see the industry collectively discussing future-ready and sustainable approaches for the built environment.

**Atul Tendulkar, Senior VP,  
Brookfield Properties**



## PROMINENT SPEAKERS LENDING THEIR INSIGHTS ON SMART HOME TECHNOLOGY AND AV

Presented here is an exceptional line-up of global speakers, industry leaders, architects, consultants, technology experts, and innovators from diverse segments who shared their expertise, insights, and real-world experiences through engaging knowledge sessions, panel discussions, and interactive conversations at Smart Home Expo 2026.



**Adam Pelz**

Owner & President, Bespoke Cinemas



**Peter Aylett**

Partner, Officina Acustica



**Sumant Bhatia**

General Manager, Havells India Ltd.



**Markus Pieprznik**

Head of Sales, BEC Akustik



**Nick Fichte**

Business Development Director - Home & Yacht - Global, L-Acoustics



**Rajesh Sharma**

Director – Marketing, GM Modular



**Pushkar Gokhale**

Executive Vice President and Business Head, Godrej Enterprises Group



**Nishchal Saxena**

Director, Jung India



**Rami Ezratty**

President, Pure Acoustics



**Ar. Shahen Mistry**

Principal Architect & Founder,  
Shahen Mistry Architects



**Himani Gupta**

Asst. Vice President, Havells India Ltd.



**Ashish Tijare**

Director & CEO, Intelligible Tech Solutions



**Lucas Wong**

Innovative Business Head For South Asia,  
Dahua Technology



**Alex Foxon**

International Product Ambassador, DALI



**Darren Barker**

Design Director, Cinema Luxe



**Dhanraj Sheth**

Dhanraj Sheth, CEO, UNISER  
SMARTSPACES



**NIKHIL PATEL**

Head, Hospitality Segment India & South  
Asia Region, Lutron Electronics



**Omar Farooq**

GM, Technical & Operations, CP PLUS



**Dr. Mala Singh**

Chairperson & MD, PEC Greening India



**Sawan Nichani**

Founder, MCBEE



**Jayaprakash Chinnamuthu**

Director Residential & Strategic Initiatives,  
Crestron India



**Hasaan Kadli**  
Founder and CEO, Modo



**Maulik Unadkat**  
Founder, Beyond Alliance



**Premika Chandrasekaran**  
Director, Home Solutions and E-commerce,  
Schneider Electric



**Kirtee Siingh**  
Design Principal, Kirtee And Assoc



**Kruti Sheth**  
Co-Founder and Principal Designer,  
A&K Design Studio



**Kulin Kapadia**  
Principal Founder, Alcove Designs



**Vincent Laigle**  
General Manager, AV Industry



**Mahima Mistry**  
Principal Designer, House of Mistry



**Maitreyee Kelkar**  
Principal Designer & Founder, Studio SOL



**Ar. Ketan Jawdekar**  
Founder & Principal, Studio K-7



**Ankur Kulkarni**  
Managing Director, Kaizen Design  
Solutions Pvt



**Mehul Joshi**  
Associate Consultant, AR Tech  
Engineering Solutions LLP



**Neha Karnala**

Principal Electrical Engineer, 9E Global Engineering



**Sakhee Chandrayan**

President, INBAC Association



**Linus Lopez**

Partner, Lirio Lopez Lighting Design Consultants



**Nishant Padhiar**

Consulting Editor (Tech) - Robb Report \_ Hi-Fi & Auto Editor - 91 Mobiles, Listening Lab



**Fenil Mehta**

CEO, Sound Tight, Sound Proofing



**Prashant Nimbade**

AVP, MEP (India Head), House of Abhinandan Lodha



**Ar. Manish Dikshit**

Founder, Aum Architects



**Ar. Mihir Kotak**

Co-Founder & Principal Architect, 4th Dimension



**Ar. Prachiti Khanvilkar**

Founder, PKD Studio



**Vineet Mehta**

Director, Vinshek Private Limited



**Ashish Thakkar**

Ashish Thakkar, Principal Designer, Light Source



**Chaitanya Vuyyuri Narayana Satya**

Sr GM - BU Strategy & Offer Head, Schneider Electric



**Rati Chaudhary**

Owner and Editor, The Ideal Home and Garden



**Rhythm Arora**

CEO & CTO, Qubix Technologies



**Ridham Gada**

Partner, Prem Group



**Rohit Chaudhry**

Founder & CEO, HIE Life Global Technologies Pvt Ltd



**Ganesh Vudutha**

Co-Founder & CEO, Edomotics



**Usama Shaikh**

Founder and Principal, US+A Lighting Studio



**Shami Goregaoker**

Design Director, GA Design, Mumbai



**Shobhan Kothari**

Partner & Co-Founder, ADND



**Sneha Zagade**

Head, Sustainability & ESG, Horizon Industrial Parks Ltd\_



**Sohan Perera**

Founder and CEO, Link Media Systems (LMS)



**Atul Tendulkar**

Senior VP, Brookfield Properties



**Tanmay Mehta**

YouTuber & CEO, TappAV by Touchwood



**Vipul Tapke**  
CEO and Chief Architect, JTCPL Designs



**Dr. Amit Chaudhari**  
Associate Director and Head, MEP & Infrastructure,  
India, KPM Engineering Consultants



**Dr. Ashish Sharma**  
Head, ESG & Sustainability, Navbharat  
Megadevelopers Pvt. Ltd., Adani Group



# Smart Home Expo Honorary Awards

The Smart Home Expo 2026 Honorary Awards were instituted as a distinguished platform to celebrate innovation, creativity, and excellence within the smart living industry. The awards recognised the outstanding contributions of architects, interior designers, lighting designers, and technology experts who are transforming modern spaces through intelligent design and advanced automation solutions. By honouring their visionary work, the platform not only celebrated individual achievements but also highlighted the evolving future of smart and connected living.



Ar. Shaheen Mistry, Principal Architect & Founder, Shaheen Mistry Architects receiving award from Vinayak Paradkar, Director, Smart Home Expo\_



Anshul P Gujarathi, Director, Eco Solutions receiving award from Sakhee Chandrayan, President, INBAC Association



Ar. Prashant Sutaría & Ar. Hemanti Sutaría, Principal Architect, Prashant Sutaría receives an award from Nistas Sanga, Principal Associate, Interior Design, Talati & Partners LLP and Rajat Kabra, Co-Founder and Principal Architect, The DesignBOX.



Ar. Manish Dikshit, Founder, Aum Architects receiving award from Vinayak Paradkar, Director, Smart Home Expo



Rajila Jain, VP and Engineering CANNONDESIGN INT PVT receiving awards from Sakhee Chandrayan, President, INBAC Association



Ar. Surbhi Jindal, Founder & CEO, Da Light Hub \_ Ambassador - Womeninlighting receiving the award from Winston Pereira, Executive Director, Messe Frankfurt Trade Fairs India\_



Dr. Amardeep M. Dugar, Founding Principal, Lighting Research & Design receiving the award from Winston Pereira, Executive Director, Messe Frankfurt Trade Fairs India.



Linus Lopez, Partner, Lirio Lopez Lighting Design Consultants



Pronit Nath, Principal Architect, Urban Studio, receives an award from Nistas Sanga, Principal Associate, Interior Design, Talati & Partners LLP and Rajat Kabra, Co-Founder and Principal Architect, The DesignBOX.



Mehul Joshi, Associate Consultant, AR Tech Engineering Solutions LLP receives the award from Sakhee Chandrayan, President, INBAC Association.



The Team IIID Mumbai Honoured for their Support

# THE SMART SPACE AWARDS 2026 WINNERS

The Smart Space Awards 2026, presented in collaboration with the IIID Mumbai Regional Chapter, emerged as one of the standout highlights of Smart Home Expo 2026. The awards featured nine diverse categories, thoughtfully structured across three professional segments: Architects, Interior Designers and System Integrators.

This year's edition witnessed enthusiastic participation from leading architecture firms, renowned interior designers, and innovative system integrators, all coming together to showcase projects that seamlessly integrated smart technologies into modern spaces. The awards celebrated outstanding achievements in creativity, innovation, functionality, and intelligent design across residential, commercial, hospitality, and experiential environments.



The distinguished jury consisted of **Rajan Goregaoker, Partner, GA Design; Jamshed Banaji, Principal Architect, Banaji & Associates Nistas Sanga, Principal Associate, Interior Design, Talati & Partners LLP; Rajat Kabra, Co-Founder and Principal Architect, The DesignBOX; Rakesh Sachdev, Founder & Managing Director, Acetech Technologies Pvt. Ltd.; and Dr Amardeep M. Dugar, Founding Principal, Lighting Research & Design and Manojkumar Soni, Chief Technical Director, AV4U & Member- CEDIA Board of Directors.**



The winners were felicitated during the celebration of their contribution towards shaping the future of connected and intelligent living. We give you a glimpse of the winning projects



**Ar. Apoorva Shroff, lyth Design, Winner in Architect Category**

Located on Amrita Shergill Road in the historic heart of Lutyens' Delhi, the project named "Where the Olive Tree Rests" is a 4,000 sq ft residential villa thoughtfully redesigned to accommodate the evolving needs of a growing family. Centered around a mature olive tree that forms the soul of the home, the project reimagines the existing structure through strategic spatial planning, material richness, and seamless technological integration.

The interiors celebrate a layered material palette of timber, lime-finished surfaces, brass accents, and grey-white inlay marble flooring. Warm wooden detailing, black-knobbed dining walls, concealed storage elements,

and carefully crafted cornices create an atmosphere that feels both contemporary and deeply rooted in Delhi's architectural heritage. In collaboration with MCBEE Technology integration was approached with equal sensitivity to design. The residence features a fully integrated smart home ecosystem built on the KNX platform, combining intuitive control with reliable backend automation. Premium Ekinex touch keypads provide user interaction, while Theben KNX modules manage lighting, dimming, and automation logic. HVAC systems are centrally controlled through CoolAutomation CoolMaster integration, all unified via the Crestron CP4-R processor for seamless app-based control of lighting, climate, and customised scenes. Integration with Apple HomeKit through IHome further enhances ease of use.

The project also incorporates retractable RENSON pergolas connected to the master bedroom and living spaces, allowing areas to transform from open-air terraces into enclosed, climate-controlled environments with automated mosquito mesh screens. Supported by Peplink network infrastructure and future-ready connectivity, the home successfully blends timeless architecture with intelligent living solutions.



**Kejal Khasia and Jignesh Khasia, Design Touch Studio, Interior Designer Winner**

Designed by Designtouch Studio, this duplex residence at Indiabulls Sky Forest is envisioned as a layered, interconnected home that thoughtfully balances spatial design with intelligent technology integration. Created for a multi-generational family, the home is planned across two levels, each responding to different lifestyle needs while maintaining

visual continuity through a dramatic 26-foot staircase wall that acts as the central architectural spine of the residence.

Technology integration was approached with equal emphasis on functionality and aesthetics. The residence features a centralised smart home system powered by AHA Smart Home, enabling seamless control of lighting, climate, security, and motorised systems through a single interface. VRV air-conditioning by Mitsubishi Electric, smart kitchen appliances by Häfele, advanced security systems, and a vertical microgreens unit further enhance comfort, efficiency, and sustainability within the home.

One of the project's biggest challenges was integrating multiple smart systems within a vertically layered layout without disturbing the clean architectural language.



### **Garvesh Bharania, Agrima Solutions LLP, System Integrator Winner**

The Kataria Residence spanning over 85,000 sq. ft. across four expansive levels. The design philosophy centred on engineering-led luxury, where technology enhances everyday living without overwhelming the spatial experience. Automation systems were carefully integrated into the architectural framework to maintain visual clarity and a refined aesthetic. Minimalist Crestron Horizon keypads, concealed wiring infrastructure, and discreet control interfaces ensure that technology remains virtually invisible while supporting seamless interaction throughout the residence. Built on the Crestron Home OS platform, the residence integrates lighting, climate control,

distributed audio, security, and access systems into a unified smart ecosystem. The project manages more than 650 lighting loads, 76 HVAC zones, 39 distributed audio zones, and 11 dedicated surround sound entertainment spaces configured for different lifestyle experiences, ranging from bedroom lounges to informal entertainment and cigar rooms. A standout feature is the live performance audio integration, allowing musicians to connect directly into the system and distribute audio across multiple areas in real time.

To ensure scalability, reliability, and uninterrupted performance, the project uses a distributed processing architecture with a master processor, floor-level processors, and backup processors working together through a high-performance AV-over-IP network. DALI-based lighting control, CoolMaster Pro HVAC integration, Crestron touchscreens, biometric access systems, and Netgear managed switches further strengthen the system's capabilities. Despite its technical complexity, the residence delivers a simple and device-agnostic user experience, demonstrating how large-scale engineering and luxury living can coexist in perfect harmony.



### **Deepak Nagpal, SBM, System Integrator Runner Up**

Designed around a refined Neoclassical aesthetic, this residence seamlessly integrates advanced automation while preserving the elegance of its architectural language. The lighting strategy was carefully developed in line with the lighting designer's vision, with DALI-based controls used extensively for architectural lighting to enhance intricate moldings, textures, and classical detailing with precision and flexibility.

The smart home ecosystem was engineered to provide centralized management for the expansive property, enabling effortless control of façade lighting, HVAC systems, fresh air ventilation, water sprinkler automation, and shading solutions. Since the residence was designed without ceiling fans, intelligent HVAC integration through Coolmaster PRO ensured efficient climate management throughout the home.

Invisible Cerasonar speakers were deployed for immersive multiroom audio without disturbing the visual harmony of the spaces.

The technology backbone combines Control4 OS3, KNX-based Ekinex keypads, DALI lighting, Hunter Douglas blind integration, and Episode multiroom audio systems, all connected through a robust Grandstream-powered network infrastructure with dual WAN redundancy and seamless WiFi-7 coverage across the estate.

## Category: Residential Apartment



### **Ar. Riddhi Shah, ADL Group - Advance Designs N Lifestyle, Architect Winner**

The home's intelligent ecosystem is powered by AHA Automation, creating a centralized platform that seamlessly integrates lighting, climate control, media, security, motorized systems, and smart appliances into one

intuitive interface. Through the AHA Smart Home App, residents can remotely manage lighting scenes, AC settings, curtains, access control, and entertainment systems while customizing modes such as Relax, Entertain, and Night. Voice assistant compatibility enables hands-free control for a more natural user experience. The platform also features intelligent lighting scene programming, energy monitoring, and real-time security access. Zigbee protocol ensures reliable low-power communication between sensors and automation devices, while Matter integration delivers future-ready cross-platform compatibility. The ecosystem is synchronized with Apple HomeKit and remains fully compatible with Google Assistant and Alexa for flexible, multi-platform smart home control.



### **Kruti Vipul Sukhadia, Sharran Architecture + Design, Interior Designer Winner**

Pansuria Residence is envisioned as a "Contemporary Ghar" — a home that remains deeply rooted in Gujarati living traditions while embracing a refined modern aesthetic. The design philosophy focuses on simplicity, durability, and ease of maintenance, expressed through honest materials and carefully considered detailing. Traditional spatial elements such as the pooja room and zoned planning are thoughtfully retained, yet reinterpreted in a more open, fluid, and contemporary manner.

Technology integration within the residence is intentionally subtle and highly functional, enhancing the living experience without visually dominating the interiors. The smart systems were planned in parallel with the architectural layout to ensure intuitive placement of switches, fixtures, and controls. Lighting automation seamlessly interacts with the spatial zoning, enabling different moods and ambiances based on time and usage.

The home features the Osum automation system with Osum switches, integrated control systems for lighting and motorised curtains, dimmable and tunable LED drivers, and decorative light fixtures by AB Lights. Climate control is managed through the CoolMaster AC integration system and CoolMaster interface for centralised air-conditioning control. Additional smart features include motorised curtain tracks and motors, remote-controlled ceiling fans, a Yale smart lock at the main entrance, video door phone system, CCTV surveillance at the entrance, and a robotic vacuum cleaner for enhanced everyday convenience.



**Ganesh Vudutha, EDMOTICS Smart Systems Pvt Ltd, System Integrator Winner**

Located at the highest point of Jubilee Hills within the prestigious One Hyd Park, this residence overlooks KBR Park, Hussain Sagar Lake, and the Assembly, offering panoramic views across the city. Conceived as a private sanctuary inspired by the sophistication of a five-star suite, the home seamlessly integrates luxury interiors with advanced automation technology.

Built primarily on a Schneider KNX backbone, the system ensures robust communication and reliable performance across all connected technologies, while Cobranet powers the

distributed multi-room audio infrastructure. A high-performance Wi-Fi and network architecture further ensures a smooth, stable, and responsive user experience throughout the residence.

The frontend interface combines premium control solutions, including Basalte Ellie touch panels, Basalte Fibonacci keypads, Blacknova Blackjack keypads, and Legrand Living Now switches, allowing intuitive interaction with the smart systems. Sensors such as Basalte Auro and Steinel HF360 enhance automation responsiveness, while the Basalte Miro remote offers handheld convenience.

Security integration includes the Basalte Adelante door station, Abloy high-security multi-point locks, Yale smart locks, and CCTV surveillance systems. Audio-visual systems feature the Basalte Plano home theatre in the living area, a Garvan Acoustic theatre setup in the master bedroom, and Speakercraft in-ceiling speakers for distributed audio.

The entire automation system is powered by the Basalte Core Plus processor with the Basalte Asano multi-room audio platform, programmed and integrated through Basalte Studio and ETS6 KNX software.



**Maulik Patel, Future Automation Solutions, System Integrator Runner Up (Tie)**

This modern apartment showcases a highly integrated smart automation ecosystem designed to enhance comfort, entertainment, security, and long-term scalability. Built on a KNX backbone using hardware from Theben GmbH, Vibroxx keypads with integrated

thermostats, eElectron IP interfaces, and the 1Home server, the residence seamlessly combines lighting, HVAC, AV, shading, security, and utility management into a unified platform controlled via Control4.

The lighting system integrates DALI-based dimming and tunable white control, enabling customised ambience through room-based and global scenes. TOSO motorised curtains and blinds are fully synchronised with KNX and Control4 automation. HVAC integration is achieved through CoolAutomation interfaces for VRV/VRF systems, providing real-time control and scheduling.

Entertainment is distributed through multi-zone audio systems using Episode matrix chassis, Origin Acoustics, Speakercraft, TruAudio, Sonos, and Earthquake speakers.

The living room features a concealed AV setup with a motorised floor-rise screen, Optoma ultra-short throw 4K laser projector, Marantz AVR with Dirac Live calibration, and Krix surround speakers.

Security includes Assa Abloy smart locks with eKey biometric integration, Honeywell

surveillance, Ajax panic alarms, and Theben occupancy sensors. Networking infrastructure features Grandstream Wi-Fi 6 access points, Molex passive fibre networking, Sophos firewall security, VPN-enabled remote access, and cloud-based management designed for long-term future readiness.



**Kshitij Thakor, Nirvana Automation, System Integrator Runner Up (Tie)**

The apartment integrates a comprehensive smart home ecosystem designed to deliver seamless convenience, intelligent automation, and enhanced security. Lighting automation and HVAC systems are centrally managed through a true image-based tablet application powered by an RTI Controller, enabling intuitive, room-by-room control with a highly visual user interface. The automation backbone is built on KNX technology using ABB KNX lighting systems and Intesis KNX integration for Daikin VRF air-conditioning control.

Security is elevated through multiple smart access solutions, including smart entrance locks, Touchkey fingerprint-enabled wardrobe locking systems with mobile app integration and fail-safe technology, along with Aurus hidden locks for secure concealed storage and jewellery safes. Motion-based automation using FARADITE sensors in the foyer and washrooms enhances energy efficiency, safety, and convenience.

Motorized curtain systems operate through scheduled automation, while Roger gate motors automate the screen door system. Entertainment integration includes centralized home theatre control with a projector lift mechanism for concealed AV functionality. Lighting control is further enhanced through Vurve switches and Lutron Pico remotes for flexible scene operation.

The networking infrastructure is designed for high-speed, future-ready connectivity using TP-Link network switches, a UNIFI router, and UNIFI Wi-Fi 7 access points, ensuring stable, secure, and fully connected smart living throughout the residence.



**Ar. Dhairyasheel Powar, Unitecture Design Solutions, Architect Winner**

Located in Phursungi, Pune, the 5,000 sq. ft. S.P. Traders office is a contemporary commercial workspace completed in December 2025 with a project budget of ₹1.8 crore. The project reimagines a simple commercial shell into a refined, human-centric office environment that balances industrial strength with warmth and comfort.

Drawing inspiration from steel and concrete, the exterior features a bold architectural expression with textured finishes, deep-set windows, and strong geometric lines. In

contrast, the interiors introduce soft curves, open planning, warm oak finishes, concrete-inspired greys, tactile materials, and abundant natural light to create a calm and collaborative workspace.

Technology integration was approached with subtlety, ensuring smart systems support the architecture without disturbing its visual simplicity. Lighting and HVAC systems are seamlessly concealed within ceilings, walls, and furniture elements, maintaining a clean and uncluttered aesthetic. The office operates on a centralized control network that connects user interfaces, control panels, HVAC systems, and integrated building functions for efficient day-to-day management.

Desktop-based interfaces provide intuitive monitoring and operational control, while a LAN-wired network infrastructure with a centralized main server ensures reliable communication, secure data flow, and uninterrupted connectivity across the workspace. The project also adheres to established industry safety standards for integrated system design.



**Dhanraj Sheth, Uniser SmartSpaces Pvt Ltd, System Integrator Winner (Tie)**

The apartment's automation design carefully preserves its classical aesthetic while integrating advanced smart technologies in a refined and unobtrusive manner. VURVE gothic-style toggle switches were selected to complement the ornate interiors, blending seamlessly with rich finishes and traditional detailing. Built on a KNX automation backbone using ABB lighting systems and Intesis KNX integration for Daikin VRF air-conditioning control, the residence offers centralized

management through an RTI Controller with a true image-based tablet application for intuitive room-by-room control.

The smart ecosystem integrates lighting, HVAC, automated curtains, home theatre control, security, and access management into one cohesive platform. A cinematic "Theatre Mode," inspired by No Time to Die, automates living room doors, curtains, and a descending projector lift to create an immersive entertainment experience. Security features include Touchkey fingerprint-enabled wardrobe locks with mobile app integration, Aurus hidden locks for concealed storage, and smart entrance locking systems with fail-safe mechanisms.

Additional integrations include FARADITE motion sensors for automated foyer lighting, Lutron Pico remotes, Roger gate motors for screen doors, and concealed projector lift systems. The network infrastructure uses TP-Link switches, UniFi routers, and Wi-Fi 7 access points to ensure seamless connectivity.



**Jay Chheda, Beyond Alliance, System Integrator Winner (Tie)**

The Peninsula Corporate Park project delivers a fully integrated smart workplace where automation, AV, lighting, HVAC, and unified communication operate as a single enterprise-grade ecosystem. Designed from inception around usability and reliability, the system combines Crestron centralized control architecture with KNX automation and DALI lighting control for precise environmental management and seamless user interaction.

ClearOne DSP-driven conferencing systems provide consistent, intelligible collaboration audio across meeting spaces, while distributed audio solutions from Byford Audio, Paradigm,

and Lumi Audio ensure balanced acoustic coverage throughout the office. HVAC integration is managed through CoolMaster interfaces, while Optoma projection systems create dedicated presentation environments. Unified communication and Wi-Fi infrastructure are powered by Grandstream, complemented by Hikvision surveillance systems for centralized security monitoring.

Interfaces remain minimal and visually unobtrusive, allowing the architectural identity of the workplace to remain intact.

The network infrastructure follows a structured wired-first approach with enterprise-grade switching, segmented traffic architecture, redundant pathways, and Wi-Fi 6 mesh-enabled wireless topology for seamless connectivity across large floor areas. Core automation systems operate independently of network fluctuations, ensuring uninterrupted control functionality. Supporting platforms include Crestron programming software, 4Stream and HEOS for distributed audio, GWN network management tools, and Hikvision surveillance management software for centralized monitoring and diagnostics.



**Nikhil K Jayan, Gadgeon Lifestyle Private Limited, System Integrator Runner Up**

The Litmus7 Systems Consulting headquarters at Litmus7 Systems Consulting in Kochi spans 75,000 sq. ft. and redefines the modern smart workplace through seamless technology integration. Designed around the philosophy of “Sophistication Made Simple,” the project ensures that highly advanced systems remain intuitive and effortless for users. A robust high-bandwidth network backbone powers IP video distribution, wireless BYOM/BYOD

collaboration, multi-camera livestreaming, and a 24-zone distributed audio ecosystem. The workspace integrates an RTI centralized control platform with Lutron HomeWorks QS and DALI lighting systems, enabling intelligent automation of lighting, shading, AV, and climate through touch panels and iPads. Presence sensors and automated schedules create responsive environments that adapt naturally to occupancy and usage patterns.

Collaboration zones feature ThinkHub-enabled Avocor 105” 5K touch displays, BenQ interactive panels, Crestron AirMedia wireless presentation systems, and dedicated Microsoft Teams Room integrations powered by Logitech Rally solutions. The facility also includes a professional podcast studio and a multi-purpose auditorium equipped with Christie LED walls, Datapath processors, TriCaster live production systems, Pulz line-array audio, Yamaha digital mixing consoles, and DMX/SPI-controlled stage lighting via Madrix.



**Shilpa Kabra, The DesignBOX, Architect Winner**

Century Arena is an immersive, technology-driven experience center that transforms laminate selection into an intuitive, real-time design journey. Built around a custom interactive ecosystem, the platform combines GPU-accelerated 3D visualisation, live product inventory integration, and cloud-connected CMS architecture to create a seamless customer experience across two dedicated interactive zones.

At the core of the system are 65-inch and 75-inch commercial multi-touch displays powered

by high-performance GPU workstations, enabling real-time 4K rendering of 35+ photorealistic room environments. Customers can instantly apply laminates, modify wall colours and flooring, and create mood boards through an intuitive touch interface. A custom QR-based onboarding flow allows users to register on their mobile devices, with sessions automatically transferred to the kiosks via a dedicated LAN network.

The platform integrates directly with Century's live laminate inventory, ensuring accurate SKU mapping, textures, and categorisation. An image-recognition module further enhances the experience by identifying dominant colours from uploaded references and recommending matching laminate SKUs. The system also includes an integrated analytics dashboard that tracks customer journeys, session behaviour, SKU popularity, and export activity. Branded mood boards are generated as downloadable PDFs via dynamic QR codes, creating a seamless bridge between physical retail interaction and digital engagement.



**Kaushik Wadhwana, DWG Designs, Interior Designer Winner**

The design philosophy for ONAYA centers on creating an immersive retail environment. Technology has been integrated subtly and strategically, ensuring that automation supports the spatial narrative without becoming visually dominant. The showroom is structured around a KNX-based automation system, enabling scalable and reliable integration of lighting, security, audio, and environmental controls tailored to commercial retail requirements. Functional zoning plays a

central role in the system design, with display areas, lounges, executive spaces, and service zones operating independently through customized lighting scenes, audio settings, and environmental controls. Aesthetic integration was a key consideration throughout the project. Basalte control interfaces and Norisys switch systems were carefully embedded within the architectural framework to complement the showroom's material palette of brick, wood, and handcrafted finishes. Automated blinds and lighting systems are concealed within the interiors, preserving spatial continuity and maintaining focus on the merchandise.

The infrastructure also includes biometric and PIN-based digital access control, integrated surveillance systems with cameras, intercoms, and video door phones, along with multi-room audio systems for independent sound management. KNX programming, mobile-based controls, Alexa voice integration, and a hybrid KNX/IP network ensure seamless real-time communication and operational flexibility across the showroom.



**Jay Chheda, Beyond Alliance, System Integrator Winner (Tie)**

This project redefines the modern retail environment through a technology-driven automation ecosystem designed to deliver an immersive, efficient, and future-ready customer experience across the Ground Floor and Basement levels. Built around the philosophy of “Experiential Retail through Invisible Technology,” the integration seamlessly combines lighting, audio, HVAC, and security systems into a centralised control platform while maintaining a refined and visually minimal aesthetic.

The infrastructure is powered by a Crestron RMC-4 centralised automation processor integrated with KNX and DALI-based

lighting controls, enabling intelligent scene management and scalable operation. Zoned retail audio is delivered through TruAudio in-ceiling speakers paired with Marantz amplification and HEOS music integration, creating customised ambience across retail sections. Climate automation is managed through Global Cache integration, while Hikvision CCTV systems ensure advanced security and monitoring.

A structured Cat6/Cat6A and KNX bus backbone connects floor-wise automation DBs, keypads, speakers, and surveillance devices, ensuring reliable low-latency communication and unified control across both floors. Citron keypads provide intuitive staff operation, while concealed wiring, flush-mounted interfaces, and custom acoustic speaker boxing preserve the premium retail aesthetic.

The project places strong emphasis on manual calibration and fine-tuning, particularly for audio performance and environmental control, resulting in a highly optimised retail experience tailored specifically to the space rather than relying solely on preset automation logic.



**Maulik Patel, Future Automation Solutions, System Integrator Winner (Tie)**

This commercial office project delivers a fully integrated smart workplace ecosystem. Built on a KNX-based automation backbone with DALI-enabled human-centric lighting, the workspace dynamically responds to occupancy and daylight conditions through presence sensors, adaptive lighting scenes, intelligent blind automation, and HVAC integration via CoolMaster and VRF/VRV systems. Centralized control is managed through the RTI platform with customized GUI-enabled touchscreens and mobile applications, ensuring seamless

management of lighting, climate, audio, and security systems. Collaboration spaces feature advanced AV environments including 98-inch Newline interactive displays, Aver 4K PTZ cameras, Yamaha array speakers, Shure wireless microphones, and high-resolution LED presentation systems optimized for hybrid communication.

The infrastructure integrates Bosch zoned audio, Honeywell AI-enabled CCTV surveillance, Matrix Argo face-recognition access control, and Bosch AVENAR fire alarm systems with 200+ intelligent detectors. Enterprise networking is powered by Cisco Catalyst routers, Fortinet FortiGate firewalls, FortiAP Wi-Fi 6E access points, and secure fiber-optic connectivity with VLAN segmentation and VPN integration.

Designed to global KNX, DALI, NFPA, TIA/EIA, and AVIXA standards, the project combines scalability, energy efficiency, cybersecurity, and high-performance system calibration to create a resilient and intelligent next-generation commercial workspace.



**Isha Narayan, Architect Narayan & Associate Pvt Ltd, Architect Winner**

The design philosophy of Kertel Hotel is rooted in balancing modern hospitality standards with the cultural, climatic, and material identity of the Democratic Republic of the Congo. The project creates a refined, technology-enabled hospitality environment where smart systems enhance guest comfort while remaining visually unobtrusive within the architectural narrative.

The hotel integrates an intelligent ecosystem built around IoT, automation, and AI-

driven technologies to improve operational efficiency, sustainability, and user experience. Smart lighting, HVAC, curtain controls, AV systems, CCTV, and access control devices are connected through a layered architecture comprising field devices, centralized Building Management Systems (BMS), Room Automation Systems (RAS), and lighting control platforms. Recessed lighting, concealed HVAC systems, and centralized mobile-based controls ensure seamless integration without compromising spatial aesthetics.

Core infrastructure includes enterprise-grade servers, switches, routers, firewalls, Wi-Fi access points, and structured cabling systems supporting high-speed fiber connectivity across guest rooms, public spaces, and back-of-house operations. Hospitality operations are managed through Oracle Hospitality OPERA PMS and Cloudbeds, enabling reservations, contactless check-ins, billing, room allocation, and guest services through mobile applications.



**Abhinav Gupta and Jayati Gupta, LDG Studio, Interior Designer Winners**

Mirador Riverfront integrates an intelligent IoT-driven ecosystem where technology is seamlessly aligned with architecture, user comfort, and operational efficiency. At the core of the project is a centralized Building Management System (BMS) that monitors and controls lighting, HVAC, shading, energy, water, and security systems in real time through a hybrid KNX/BACnet and wireless IoT infrastructure. Occupancy sensors, motion detectors, daylight (lux) sensors, and smart thermostats continuously

adjust environmental conditions based on occupancy, daylight levels, and time of day, ensuring adaptive comfort while minimizing energy consumption. Lighting control modules, dimmers, and HVAC controllers work in sync with passive façade strategies that reduce glare and heat gain.

The network architecture combines wired KNX/BACnet reliability with flexible wireless IoT layers connected through gateways to a centralized BMS server and facility management dashboard. Real-time analytics enable predictive maintenance, energy optimization, and remote monitoring through tablet and mobile interfaces.

Integrated energy and water metering systems support sustainability goals aligned with ECBC and IGBC standards, while ASHRAE, IES, and NBC guidelines informed thermal comfort, lighting quality, and life-safety design. Technology is intentionally concealed within ceilings, walls, and joinery, creating a seamless hospitality environment where automation remains intuitive, responsive, and visually unobtrusive.



### **Palak Hotha, Actis Technologies, System Integrator Winner**

Fairmont Hotels & Resorts Mumbai partnered with Actis Technologies to create a sophisticated AV and communications ecosystem that seamlessly blends premium audio, business collaboration, and life-safety compliance across the property. At the heart of the installation is a network-based Dante/AES67 audio infrastructure that

enables centralized yet flexible zone-wise audio control across specialty restaurants, lounges, entertainment venues, and business spaces. Signature dining destinations including The Hedonist, Oryn, and Beyond Oryn are equipped with Devialet Phantom 108 dB custom speakers integrated with Dante-compatible pre-amplifiers, creating audiophile-grade soundscapes with exceptional clarity, depth, and performance. A Harman-powered background music ecosystem featuring JBL speakers, Crown amplifiers, and BSS backend processing ensures a consistent ambient audio experience across public areas. Entertainment zones further integrate RCF systems, Pioneer DJ setups, and professional Soundcraft, Sennheiser, and Shure equipment for live performances and events. Poly collaboration solutions support seamless communication in business centres, while integrated fire-alarm-linked audio muting ensures complete life-safety compliance across the property.

### **Category: Hospitality – Restaurant/Cafe**



### **Dhanraj Sheth, Uniser SmartSpaces Pvt Ltd, System Integrator Winner**

Kaspers Restaurant is a technology-driven hospitality project designed to create a fully immersive, multi-sensory dining experience across three distinct zones—the main dining area, outdoor terrace, and restrooms. The project integrates circadian lighting, multi-zone audio, and intelligent automation into a seamless ecosystem where lighting and music evolve naturally throughout the day. Built around the philosophy of “biophilic rhythm,” the system uses Lutron DALI-based architectural lighting control combined with Control4 automation to synchronize lighting scenes and audio transitions based

on time-of-day schedules. Colour-tunable recessed spotlights and concealed LED strips dynamically shift from cool daylight tones during lunch service to warmer amber hues in the evening, mirroring natural daylight progression.

The audio infrastructure features independent zone-based sound environments using Sonance in-ceiling speakers, Sonance landscape rock speakers, and Lithe Audio subwoofers, all managed through a Control4 Core 3 processor with automated playlist scheduling. Grandstream Wi-Fi access points and segregated VLAN-based networking ensure stable connectivity, while TP-Link IP CCTV systems provide full-premises surveillance.

Aesthetically, all technology was intentionally concealed within the architecture through flush-mounted speakers, recessed lighting, and integrated controls. The result is a zero-touch hospitality environment where automation operates invisibly, delivering acoustically distinct spaces, energy-efficient operation, and a consistently elevated guest experience throughout the day.



**Ar. Krunal Patel, DINTERPLAY ARCHITECTS,  
Architect Winner**

This experience centre is designed as a fully integrated smart environment, combining advanced lighting automation, immersive audio-video systems, motorised curtains, and intelligent climate control into a seamless user experience. Built on a KNX-based automation platform by Theben, the project integrates scene-based lighting, synchronized AV across two lounges, and centralized air-conditioning

control through Intesis communication gateways. Human-centric lighting dynamically adjusts brightness and colour temperature according to daylight conditions. Through integrations with Apple Home and Google Home. Location-based lighting automation uses occupancy sensing and geo-triggered controls to activate customised lighting scenes as users move through the space. NFC-based automation enables instant scene recall through smartphone tap commands, activating presets such as welcome, entertainment, or shutdown modes. The infrastructure is powered by a NETGEAR Business-series router and PoE switch for reliable connectivity. Control interfaces include Eelectron, Ekinex, Basalte, Schneider Electric, and MDT display keypads, while a Savant processor manages system-wide automation. Audio is delivered through Episode in-wall speakers and KEF LS50 systems, paired with FormaLighting luminaires .



**Dhiren Desai, Di System (Dome Automation),  
System Integrator Winner**

This commercial smart office in Morbi operates on a sophisticated hybrid automation ecosystem combining KNX, DALI-2, Matter, and IoT technologies within a seamless, future-ready infrastructure. A KNX/DALI-2 wired backbone manages all hardwired lighting and automation systems, while Matter over Thread/Wi-Fi controls next-generation wireless IoT endpoints, including Daikin and Carrier HVAC systems. Home Assistant acts as the central middleware, hosting automation logic, real-time energy monitoring dashboards, and system redundancy, while Control4 provides

premium in-wall touchscreen and mobile-app interfaces. The project's defining innovation is a proprietary, in-house developed Matter-to-KNX Gateway, the first deployed in a commercial project in Gujarat, enabling real-time bi-directional communication between Matter-certified wireless devices and the KNX bus. KNX ETS 6 and the 1Home platform ensure interoperability and standardised commissioning across the ecosystem. The office integrates Panasonic Core keypads, Klipsch in-ceiling speakers, Marantz AV processing, Epson ultra-short-throw projection with a concealed motorised floor-rising screen, and CCTV-triggered occupancy automation. Human-centric DALI-2 tunable lighting dynamically adjusts between 2700K-6500K based on occupancy and time-of-day schedules.

A high-availability network with segregated VLANs supports KNX-IP tunnelling, DALI-2 over KNX, and Matter over Thread/Wi-Fi. Redundant Wi-Fi mesh infrastructure ensures uninterrupted connectivity, while KNX provides deterministic fail-safe operation for all critical hardwired circuits.



**Bhavesh Doshi, Entelechy Automation Pvt Ltd, System Integrator Winner**

The Mumbai International Cruise Terminal is India's largest cruise terminal and among Asia's biggest, spanning over 415,000 sq. ft. with the capacity to handle five cruise ships and nearly one million passengers annually. Designed around a wave-inspired architectural language, the terminal integrates advanced wireless lighting automation to create an immersive, energy-efficient passenger experience aligned with global cruise infrastructure standards.

At the core of the project is a decentralised Casambi Bluetooth Low Energy (BLE) mesh architecture with no central controller, eliminating single-point failure risks while enabling scalable, real-time lighting control. The system incorporates 48 Casambi CBU-DCS DALI controllers, 234 DESIOT ES-PWM4 IP67 modules powering RGBW wave-ceiling lighting, and intelligent daylight and occupancy sensors for adaptive lighting automation. Phase 2 further expands the network with 527 Casambi-enabled smart drivers and additional ES NBI PWM controllers. Dynamic RGBW lighting integrated into the terminal's signature wave ceiling allows operators to instantly transform ambient moods through the Casambi app, while daylight harvesting, occupancy sensing, scheduling, and remote diagnostics optimise operational efficiency and energy performance. A TCP/IP Ethernet gateway backbone connects multiple floors, enabling seamless communication across the expansive facility.



**Kewal Deshpande, Tanti Automatics Pvt Ltd, System Integrator Runner Up**

The BIAL Smart Campus Management System (SCMS) at Kempegowda International Airport Bengaluru is a large-scale IoT-driven energy monitoring and intelligent lighting platform designed to optimise operational efficiency across the airport campus. Built on a wireless-first architecture, the system integrates 48 feeder pillars through RS485 Modbus energy meters, industrial IoT gateways, MQTT telemetry, and M2M cellular connectivity eliminating the need for dedicated communication cabling while ensuring scalability across outdoor infrastructure.

Terminal 1's Lighting Management System (LMS) is powered by a KNX TP backbone with KNX actuators, occupancy sensors, daylight sensors, and IP routers enabling intelligent scene control, adaptive dimming, daylight harvesting, and time-based scheduling. All systems are integrated into a unified web-based dashboard providing real-time kWh monitoring, trend analytics, fault alerts, and remote management. The architecture combines MQTT-over-TLS secure telemetry, KNX-IP integration, and cloud-hosted SCMS servers for continuous monitoring and predictive energy management. Wireless M2M communication significantly reduced copper cabling requirements and installation complexity while preserving airport aesthetics by housing all devices within existing feeder pillar enclosures and electrical panels. Designed around the philosophy of "Monitor, Measure and Manage," the SCMS establishes a benchmark for scalable, open-standard smart campus infrastructure in Indian aviation, demonstrating how KNX, Modbus, and industrial IoT can converge to deliver energy-efficient, future-ready airport operations.



**Sawan Nichani, MCBEE, System Integrator Winner**

RR Cinema is a 752 sq. ft. ultra-luxury private home cinema in New Delhi, conceived as the centrepiece of a fully transformed basement entertainment space. Designed to deliver a true theatrical experience within a residential setting, the project seamlessly combines advanced AV engineering, immersive acoustics, and bespoke architectural detailing. The cinema integrates a high-channel Dolby Atmos surround system with a 4K laser projection setup, advanced video processing

with dynamic tone mapping, and precision acoustic treatment to achieve exceptional cinematic performance. A major engineering challenge, low ceiling height, was resolved through floor excavation and a custom multi-tier seating layout, ensuring ideal sightlines and spatial comfort.

All speakers, acoustic panels, and structured cabling are concealed behind custom fabric walls, preserving the clean luxury aesthetic. A glass-enclosed equipment rack was intentionally exposed as a high-tech design feature, while fibre-optic star ceilings and DMX-based scene lighting create immersive ambience modes including Cinema, Ambient, and Intermission.

The centralised architecture integrates AV processors, multi-channel amplifiers, media servers, lighting controllers, gaming systems, and climate controls through a unified automation platform. A robust Cat6A network with managed PoE switches and dedicated VLANs ensures stable, low-latency communication across all systems.



**Mehernosh Pervez, Sound Decisions, System Integrator Runner Up (Tie)**

This private cinema is built on a fully integrated IP-based AV architecture where all devices communicate seamlessly through a centralised automation ecosystem. The system is designed to simplify operation while delivering reference-grade cinematic performance through advanced audio processing, video optimisation, and intelligent automation.

At the core of the system is the StormAudio ISP Core 16 processor, which manages Dolby Atmos decoding, signal routing, and system control. Source devices, including the Reavon

UBR-X100 and satellite receivers, connect via HDMI to the processor, while video signals are routed through madVR video processing for dynamic tone mapping and aspect ratio optimisation before reaching the Barco Freya DCI-grade projector and THX-certified acoustically transparent Screen Research screen.

Audiodistribution is handled through balanced connections to Powersoft Ottocanali 4K4 amplifiers driving a high-performance PMC speaker ecosystem comprising QBI XBD-A front LCR speakers, Ci140 surround speakers, Ci65 Atmos ceiling speakers, and multiple Power 2400 and Power 1200 subwoofers for uniform low-frequency control.

The entire system is unified through the Savant Systems automation platform, enabling one-touch control of audio, video, lighting, and startup sequences through a single interface. Additional innovations include a custom motorised screen-lift mechanism revealing the front speakers and an environmental monitoring system maintaining optimal temperature and humidity for long-term equipment reliability.



### **R Narayana Murthy, USK Luxury Lounge, System Integrator Runner Up (Tie)**

This luxury home cinema is designed as a reference-grade immersive entertainment space, combining high-performance AV engineering with refined architectural integration. Conceived for both stereo listening precision and cinematic immersion, the theatre features a 200-inch 2.35:1 high-gain grey acoustically optimised screen from Ga-lalite, delivering exceptional contrast and uniformity without hotspotting. A JVC 8K E-Shift laser projector is positioned 21'9"

from the screen, carefully integrated into the acoustic architecture while maintaining ventilation and visual balance.

The audio environment is built around an 11.2.4 immersive configuration powered by the StormAudio processor and Meyer Sound Galaxy processing with Dirac Live calibration and Meyer Sound Compass optimisation. The speaker ecosystem includes Meyer Sound Acheron Designer screen channels, UP-4 Slim front wides, surrounds, and height speakers, alongside dual X800C subwoofers for controlled low-frequency performance. The system supports seamless switching between Dolby Atmos, DTS:X, and Auro-3D formats.

Content delivery includes Apple TV, Kaleidescape, and Zidoo media servers integrated through a Crestron control interface with direct application launch functionality. A high-speed managed 1G network with optical HDMI transmission ensures latency-free 4K/8K playback, while iPad-based control, AirPlay streaming, concealed AV racks, and integrated lighting scenes create a seamless, futuristic user experience.



### **Rishabh Jain, Audio and Beyond, System Integrator Runner Up (Tie)**

This high-performance private cinema integrates advanced AV engineering, intelligent processing, and seamless automation into a unified entertainment environment. The space operates on an RTI control interface with a KNX backbone, enabling centralised control of lighting and audio-visual systems through a single user interface while ensuring compatibility with the client's existing automation infrastructure. At the core of the system are dual Denon AVC-X6800H AV receivers managing a 9.4.6

immersive audio configuration through advanced signal distribution and processing. A MiniDSP 2x4 HD processor enables precise subwoofer integration using delay alignment, phase correction, and equalisation, while also expanding surround outputs to achieve the desired channel architecture. The speaker ecosystem is built entirely around MAG Theatron components, including M15 LCR speakers, S6 surround speakers, CS-6 Atmos speakers, and four SB21 subwoofers powered by dedicated TDC-series amplifiers and Emotiva BasX amplification.

The visual system features a Sony XW5000ES native 4K laser projector paired with a 200-inch cinemascope screen and a MadVR Envy Core processor providing dynamic tone mapping, 3D LUT calibration, and Non-Linear Stretch optimisation.

Content sources, including Apple TV, Qube Server, and PlayStation 5, integrate seamlessly into the system. Extensive calibration and acoustic optimisation ensured consistent cinematic performance despite fixed seating and room constraints, resulting in a scalable, future-ready home cinema experience.

# EXHIBITING BRANDS

<b>THOME</b>	<b>1 SOUND</b>	<b>AERO</b> Visual Brilliance	<b>ARCHITECTURA</b>	<b>ARIAO</b>	<b>ARISS</b>	<b>AUDIOHOZZ</b>	<b>A-OK</b> Automation Control Systems Control Room & Studio Use	<b>ARETEX</b>	<b>axiom</b>	<b>audioquest</b>
<b>AYTEXCEL</b> PRIVATE LIMITED	<b>ACOUSTIC ENERGY</b>	<b>audio one</b>	<b>ampio</b>	<b>ACETECH</b> TECHNOLOGIES (P) LTD.	<b>AVOQZ</b> BY JYVECH	<b>Akuvox</b> Open A Smart World	<b>ABB</b>	<b>artsound</b>	<b>AUDIO NIRVANA</b>	<b>axis Y</b> COMPACT UTILITY SPEAKERS
<b>autosync</b>	<b>akubela</b>	<b>AlVis</b> alvishomes.com	<b>AUREA</b> SPEAKER SYSTEMS	<b>audioflow</b>	<b>AMINA</b>	<b>ATHEM</b>	<b>ASCENDO</b> SPEAKER SYSTEMS	<b>ADVANCE</b> PARIS	<b>AdeptAudio</b>	<b>AudiBAXI</b>
<b>ATIOS</b>	<b>AURUS</b> DESIGN LAB	<b>Artcoustic</b>	<b>AUTOMATRIX</b>	<b>ABSOLUTE SOUND</b>	<b>AUTOZON</b> ENTRANCE AUTOMATION	<b>Aecooly</b>	<b>AWOL</b> VISION	<b>AudioControl</b>	<b>ALLBOTIX</b>	<b>AMFENTIS</b>
<b>AJAX</b>	<b>AIRZONE</b>	<b>AYPRO</b> SPEAKER SYSTEMS	<b>Aqara</b>	<b>ARCON AUDIO</b>	<b>ATOM</b> SPEAKERS Home	<b>ALTA</b> LABS	<b>AQUAVISION</b>	<b>BOO AMERICA</b> SPEAKERS	<b>Breathe In</b> the right air	<b>black nova</b>
<b>BUSTER + PANCY</b> SPEAKERS	<b>basIP</b>	<b>BLAZE</b> BY SONANCE	<b>BASSCONTINUE</b> SPEAKER SYSTEMS	<b>BASSOCCO</b>	<b>BANDRIDGE</b>	<b>benq</b>	<b>BLUStream</b>	<b>BAB TECHNOLOGIE</b>	<b>basalte</b>	
<b>BuildTrack</b>	<b>boho</b> acoustic laptop	<b>Brihaspathi</b> The Day of Tomorrow's Technology	<b>BLAUBERG</b> Ventilatoren	<b>BEC</b> Akustik	<b>bond</b>	<b>bridges</b>	<b>cerasonar</b>	<b>CONTROLPOINT</b>	<b>CP PLUS</b>	<b>CyberData</b> The IP Endpoint Company
<b>CANVAS</b> HIFI Reinvented	<b>CAMBRIDGE AUDIO</b>	<b>COHESIVE</b> SPEAKERS	<b>CRESSIDA</b>	<b>Cinebels</b> SPEAKERS	<b>COOLAUTOMATION</b>	<b>Cyntheca</b> SPEAKERS	<b>CUE</b>	<b>CANDELA</b>	<b>CAN</b>	<b>CRESTRON</b>
<b>CAVITAK</b>	<b>CASADIGI</b>	<b>CLEAR</b>	<b>CORNERE AUDIO</b>	<b>CasaTunes</b> SPEAKERS	<b>DEVIALET</b>	<b>DTI Automation</b> PVT. LTD.	<b>DUNE HD</b>	<b>DAVIS</b> ACOUSTICS	<b>DRAINVAC</b>	<b>Diepline</b>
<b>D. DEFINITIVE TECHNOLOGY</b>	<b>DALI</b>	<b>DBGTECH</b>	<b>DENON</b>	<b>DECO WINDOW</b>	<b>Drix</b> SPEAKERS Home Intelligence	<b>DOO</b>	<b>DPS</b>	<b>DOCH</b>	<b>Dangbei</b>	<b>DNAKE</b>
<b>EVERY DOOR DESERVES A Dorsët</b>	<b>DYNADICE</b>	<b>DIGILUX-AI</b>	<b>DREAME</b>	<b>alhua</b> TECHNOLOGY	<b>EMI</b>	<b>everglow</b>	<b>Electro-Voice</b>	<b>Ember</b> AURA	<b>elipson</b>	<b>EDIFIER</b>
<b>E&amp;C</b> SPEAKERS	<b>ELFA</b> SPEAKERS	<b>embedded systems</b>	<b>ELAN</b> SPEAKERS	<b>episode</b>	<b>ECOFLOW</b>	<b>EAE</b> TECHNOLOGY	<b>ELAC</b>	<b>escosor</b>	<b>EPSON</b>	<b>ERA</b> ELECTRO DEVICES
<b>EARTHQUAKE SOUND</b> Sound That Will Move You.	<b>EVOLIX</b>	<b>ELKO</b> ep	<b>ESCALA TECH</b>	<b>ENGSTRÖM</b>	<b>ecler</b>	<b>FX</b>	<b>FUNKTION-ONE</b>	<b>future</b> KNX	<b>FORMOVIE</b>	<b>FAITH</b> Quality Speakers
<b>FURN &amp; FEN</b>	<b>FORTRESS SEATING</b>	<b>fasttel</b> Door entry systems	<b>FONESTAR</b>	<b>FYNE AUDIO</b>	<b>FOCAL</b> SPEAKERS naim	<b>FIRELUX</b>	<b>FS</b> cables	<b>FSCREEN</b>	<b>FUNK</b> Tubular Motors	<b>Goerz</b> LUMENS & INDUSTRIAL SOLUTIONS
<b>GM</b> SWITCH TO A BETTER WORLD	<b>Grimm   AUDIO</b>	<b>GALLO ACOUSTICS</b>	<b>Q.M. theben</b>	<b>G:B:D:</b>	<b>Govee</b>	<b>GEZE</b>	<b>GRANDSTREAM</b> SPEAKERS	<b>Global Caché</b>	<b>GALLO</b>	<b>GVS</b>
<b>Goldmedal</b> SWITCH TO THE AMAZING	<b>GP3 SWITCH</b>	<b>HAVELLS</b> Cabletron	<b>HIFI SOLUTIONS</b> SPEAKERS	<b>HMS</b>	<b>Heaven</b> AUTOMATION	<b>hushHiven</b>	<b>Homey</b>	<b>HI-FOCUS</b> SPEAKERS	<b>HECO</b>	<b>HEGEL</b> MUSIC SYSTEMS
<b>Hisense</b>	<b>HITECH</b> AUDIO SPEAKERS	<b>HARBOTTLE AUDIO</b>	<b>INVSYS</b>	<b>ilevia</b>	<b>integron</b>	<b>inSona</b>	<b>'INTERRA</b> SPEAKERS	<b>INSPINIA</b>	<b>Intesis</b> SPEAKERS	<b>indiana line</b>
<b>Integra.</b>	<b>I PORT</b> BY SONANCE	<b>INELS</b>	<b>ICE</b> CABLE SYSTEMS	<b>IFIXX</b> SPEAKERS	<b>its</b>	<b>JANATICS</b>	<b>JIN</b>	<b>Jamo</b>	<b>JMGO</b>	<b>JosephAudio</b>
<b>JEAN MAURER</b> SPEAKER MANUFACTURE	<b>JAMES</b> SPEAKERS	<b>JR</b> SPEAKERS	<b>JBL</b>	<b>JAL</b> SPEAKER SYSTEMS	<b>KNX NATIONAL</b> INDIA	<b>kasper</b>	<b>KEF</b>	<b>KLS</b> electronic	<b>KRIARZ</b> Your Vision, Our Design	<b>kii</b>
<b>KiCA</b>	<b>KARON</b>	<b>Klipsch</b>	<b>KRIPION</b> SPEAKERS	<b>KRIX</b> EXPERIENCE SOUND	<b>KLING &amp; FREITAG</b> SOUND SYSTEMS	<b>KEF</b>	<b>kordz</b> Connectivity Assured	<b>Lumocost</b> SPEAKERS	<b>LITHEAUDIO</b>	<b>LOCKIN</b>


# smart home expo

## MUMBAI

# “AI, Biometrics & Connected Living Are Redefining Luxury Home Security”



## **Pushkar Gokhale**

*Business Head of the Security Solutions Business of Godrej Enterprises Group.*

*Pushkar Gokhale discusses how Godrej Enterprises Group is redefining premium home security through AI-enabled surveillance, facial recognition lockers, smart access systems, and connected IoT ecosystems tailored for high-net-worth homeowners. He also shares insights into the growing demand for seamless, design-led security solutions that combine advanced technology with personalised living experiences.*

**Please share details of your security solutions most suited for luxury homes (facial recognition, smart locks, surveillance, AI monitoring, etc.).**

Godrej Enterprises Group's Security Solutions portfolio is designed to meet the evolving needs of luxury homeowners who value both functionality and refined aesthetics. Our approach focuses on multi-layered ecosystems that seamlessly integrate access control, asset protection and monitoring.

At Smart Home Expo 2026, we unveiled NX Pro Ncrypt, India's first facial recognition-enabled home locker. The solution integrates facial recognition, biometric fingerprint access, and digital PIN authentication into a single system, delivering enhanced convenience, privacy, and security through advanced AES encryption.

Our offerings also include premium home lockers such as NX Pro Luxe and Matrix Home

Lockers, along with advanced electronic security solutions, including SeeThru Pro Nova, Neo Pro View, and Godrej SeeThru Nex Pro.

Further strengthening our connected ecosystem, our IoT9 technology platform enables homes to intuitively respond to residents by automatically adjusting lighting, temperature, and connected devices based on individual preferences.

**How do you ensure convenience, personalisation and ease of use for high-net-worth homeowners?**

Our solutions are designed for flexibility, personalisation, and seamless control.

Our Video Door Phones allow master monitors to connect with slave monitors, outdoor stations, and CCTV cameras, enabling seamless communication and centralised control across large residences.



Our Wi-Fi Home Cameras further enhance convenience by offering mobile device access, intelligent alerts, and customizable settings for real-time monitoring.

At Smart Home Expo 2026, we also showcased our connected ecosystem powered by IoT9 technology, where homes automatically respond to user preferences. The moment a user unlocks the home using biometrics, lighting, temperature, and connected devices adjust automatically to create a seamless and personalised living experience.

Integrated with Alexa and Google Home, the ecosystem enables intuitive control across locks, cameras, sensors, and smart devices.

**Do your solutions incorporate AI for predictive threat detection, behaviour analysis, or automated alerts?**

Yes, our solutions already incorporate





intelligent monitoring and automated alert capabilities.

Our Wi-Fi Home Cameras feature humanoid detection technology that identifies human movement, sends real-time alerts, and triggers motion-based recording while reducing false alarms.

Our newly launched NX Pro Ncrypt combines facial recognition, biometric authentication, and digital PIN verification to strengthen intelligent access control.

Through our IoT9 technology ecosystem, connected devices can also respond dynamically to user activity, enabling more intuitive and adaptive security experiences.

Looking ahead, we see AI evolving toward

contextual intelligence and predictive security, enabling systems to recognise behavioural patterns and deliver proactive responses.

### **How do your products align with premium interior aesthetics?**

Our products are designed to seamlessly blend advanced security with sophisticated interiors.

Solutions such as NX Pro Luxe and the newly launched NX Pro Ncrypt feature refined finishes, minimalist aesthetics, and contemporary designs suited for premium homes.

Our Matrix Home Lockers combine strong protection with elegant styling, while products like the SeeThru Pro Nova Video Door Phone

feature slim profiles, clean lines, and intuitive interfaces.

Our connected locks, sensors, and IoT-enabled devices are also designed with premium finishes and compact profiles that integrate naturally into modern luxury spaces.

### **Could you share examples of your products installed in luxury residences?**

Our solutions are widely adopted across premium homes, villas, upscale apartments, and managed living spaces.

Matrix Home Lockers are commonly used to safeguard jewellery, heirlooms, and luxury watches, while personal lockers like Verge secure everyday valuables.

The newly launched NX Pro Ncrypt is particularly relevant for modern homeowners seeking future-ready security with facial recognition and biometric access.

Our Video Door Phones, Wi-Fi Cameras, connected locks, and integrated sensor-led solutions are also increasingly being adopted in luxury residences for enhanced convenience, visibility, and connected living experiences.

### **What trends in integrated home security do you foresee shaping the luxury segment over the next 3-5 years?**

The luxury home security market will increasingly be shaped by AI-driven predictive security, hyper-personalised smart spaces, and deeper ecosystem integration.

Consumers will expect homes to intuitively adapt to their preferences, from lighting and climate settings to access permissions and security controls.

Touchless and contactless solutions will continue gaining momentum. We also foresee growing demand for unified connected ecosystems where digital locks, surveillance systems, Video Door Phones, sensors, and automation platforms operate seamlessly together.



At Godrej, innovations such as IoT9 technology and our connected access solutions strongly align with these future trends.

### **What hospitality-focused innovations did you showcase at Smart Home World Expo 2026?**

At Smart Home Expo 2026, we unveiled India's first web-enabled connected hospitality lock solution designed for hotels, serviced apartments, and managed living spaces.

The solution allowed guests to securely access room locks directly through a mobile browser via a simple web link, eliminating the need for app downloads.

This created a seamless, contactless, and faster check-in experience while also helping hospitality operators improve efficiency and reduce operational bottlenecks.

The innovation reflected our focus on creating intelligent, user-centric, and frictionless access solutions for the future of hospitality.

### **What did visitors appreciate most at the Smart Room showcase at the Expo?**

Visitors particularly appreciated how the Smart Room experience showcased intuitive, connected, and highly personalised living environments.

# Godrej



Powered by IoT9 technology, the experience demonstrated how homes could automatically respond to residents, adjusting lighting, air conditioning, and connected devices based on preset preferences the moment a user entered.

The Smart Room also integrated connected cameras, sensors, smoke detectors, and smart monitoring capabilities to showcase how comfort, automation, and safety can work together seamlessly.

Integrated with Alexa and Google Home, the experience reflected the future of intelligent and connected living

### **Which flagship products were highlighted at Smart Home World Expo 2026?**

At Smart Home Expo 2026, we highlighted a

range of future-ready innovations focused on connected living and intelligent security.

Key highlights included NX Pro Ncrypt, India's first facial recognition-enabled home locker, our connected ecosystem powered by IoT9 technology, Neo Pro View, Godrej SeeThru Nex Pro, SeeThru Pro Nova, connected digital locks, and Wi-Fi monitoring solutions.

We also unveiled India's first web-enabled connected hospitality lock solution, enabling guests to securely access locks through a web link without requiring app downloads.

Together, these innovations reinforced Godrej Enterprises Group's focus on designed innovation, connected ecosystems, and future-ready security solutions for modern Indian living.

## “Beyond Speakers: Sonos Is Building Connected Sound Experiences”

### **Rennie Addabbo**

General Manager, Sonos APAC

*Rennie Addabbo discusses how Sonos is strengthening its presence in India, the rising demand for professionally installed multi-room audio systems, and how immersive sound is becoming an essential layer in modern luxury homes. He also shares insights into evolving consumer preferences, the growing influence of smart home integration, and how premium audio is increasingly being treated as a key design element alongside lighting, materials, and interiors in high-end residences.*



### **How is India positioned within Sonos’s overall APAC growth strategy, and what makes it a key strategic market?**

India is one of our fastest-growing markets in APAC, and a market where we continue to see customers bringing in multiple Sonos products as part of their first purchase, amongst the highest in the world on that front. We’re seeing a clear shift as customers move beyond standalone speakers toward integrated sound systems, driven by our most premium offerings.

With premium audio growing at 23% and luxury home ownership projected to reach USD 28 billion by 2030, sound is increasingly being designed into premium residential spaces. This is fuelling demand for professionally installed solutions - reflected in our installation channel contributing more than 50% of our business in India.

We are seeing exciting momentum in cities like Hyderabad and Bengaluru, which are experiencing significant luxury residential booms. Hyderabad’s premium housing segment grew 17% YoY in H1 2025, while Bengaluru ranks among the world’s top five cities for prime residential price growth, and in both, sound is becoming as considered a design layer as lighting or materials. The result is strong demand for our highest-tier system portfolio, and real confidence in the opportunity ahead as we deepen our installer network across India’s fastest-growing cities.

### **How do you view the rising demand for pre-installed, multi-room audio systems in premium homes, and how is Sonos responding to this shift?**

Audio is increasingly becoming foundational to home design a shift we see reflected directly in how our installation partners are being



briefed by developers and interior designers across India.

The demand is consistent: easy-to-use, seamless music and entertainment throughout the home that serves everyone under one roof. That means shared experiences like cinematic movie nights in the main living space, personal moments where parents or grandparents enjoy music or television with clarity and comfort in their own rooms, and seamless transitions from high-energy entertaining to ambient, end-of-day listening. This is exactly where the Sonos system delivers. Indian consumers are becoming increasingly intentional about how their homes function with multi-purpose spaces and integrated technology that adapts to different needs. Sonos meets that expectation with a system experience that is seamless, adaptive to the moment and grows with you over time.

**Tell us about the key innovations and products, such as Arc Ultra, Sub 4, and Era**

### 300 are currently driving growth for Sonos in the premium audio segment?

At Sonos, we make one product: the Sonos system. Our strength lies not just in individual devices, but in how seamlessly the entire system works together, and nowhere is that more evident than in India.

Indian customers are investing in our full top-tier home theatre offering, pairing Arc Ultra, Sub 4 and Era 300 as surround speakers for the most immersive entertainment experience possible. What's particularly striking is that we regularly see these premium set-ups in bedrooms, not just living rooms, which is fairly unique to India compared to other markets.

Each product earns its place in the system. Arc Ultra features our revolutionary Sound Motion™ transducer technology, delivering up to double the bass in a sleeker form factor. Sub 4 adds powerful, room-filling bass, while





Era 300 delivers the best out-loud spatial audio experience with Dolby Atmos, equally at home as a standalone speaker or as part of a full surround setup.

**How does the Arc Ultra position itself within the Sonos home theatre ecosystem, and what upgrades does it bring to immersive sound experiences?**

Sonos Arc Ultra is our flagship soundbar and the anchor of the Sonos home theatre system, continuing to be a best-seller in-market.

What sets it apart is the depth of innovation packed into an elegant form factor. Sound Motion™, our revolutionary transducer technology, delivers up to double the bass output in a slimmer, more refined design. AI Speech Enhancement goes beyond simple dialogue boost, offering four levels of precision control, particularly valuable in the multi-generational Indian household where listening needs vary significantly across age groups. While TV Audio Swap allows listeners to seamlessly shift audio from Arc Ultra to



Sonos Ace headphones with a single tap, enabling personal listening without disrupting the room.

Together, these features reinforce that the Sonos system is not static. It continues to evolve through platform enhancements that add genuine value long after installation.

**The Beam (Gen 2) has been a strong compact soundbar offering. How does it balance performance and accessibility for modern living spaces?**

Beam (Gen 2) occupies an important role in the Sonos ecosystem - it is our mid-range soundbar, and the entry point for customers who want a genuinely premium audio experience without committing to a full home theatre setup from day one. Beam is also a great Sonos speaker, equally at home filling a room with music, without the TV ever being switched on.

In a compact, elegantly designed form factor, Beam delivers Dolby Atmos-enabled spatial



audio that belies its size, making it particularly well-suited to apartments, bedrooms, or secondary living spaces where a larger soundbar would be impractical. This dual purpose as both a premium soundbar and a standalone music speaker is what makes Beam especially compelling for the Indian home.

For installers, it is an ideal product to place in multi-room projects, whether as the primary soundbar in a guest room or as part of a broader whole-home system. A customer may begin with Beam in a single room, and over time build out with Sub, surround speakers, and additional rooms as the Sonos system grows with them.

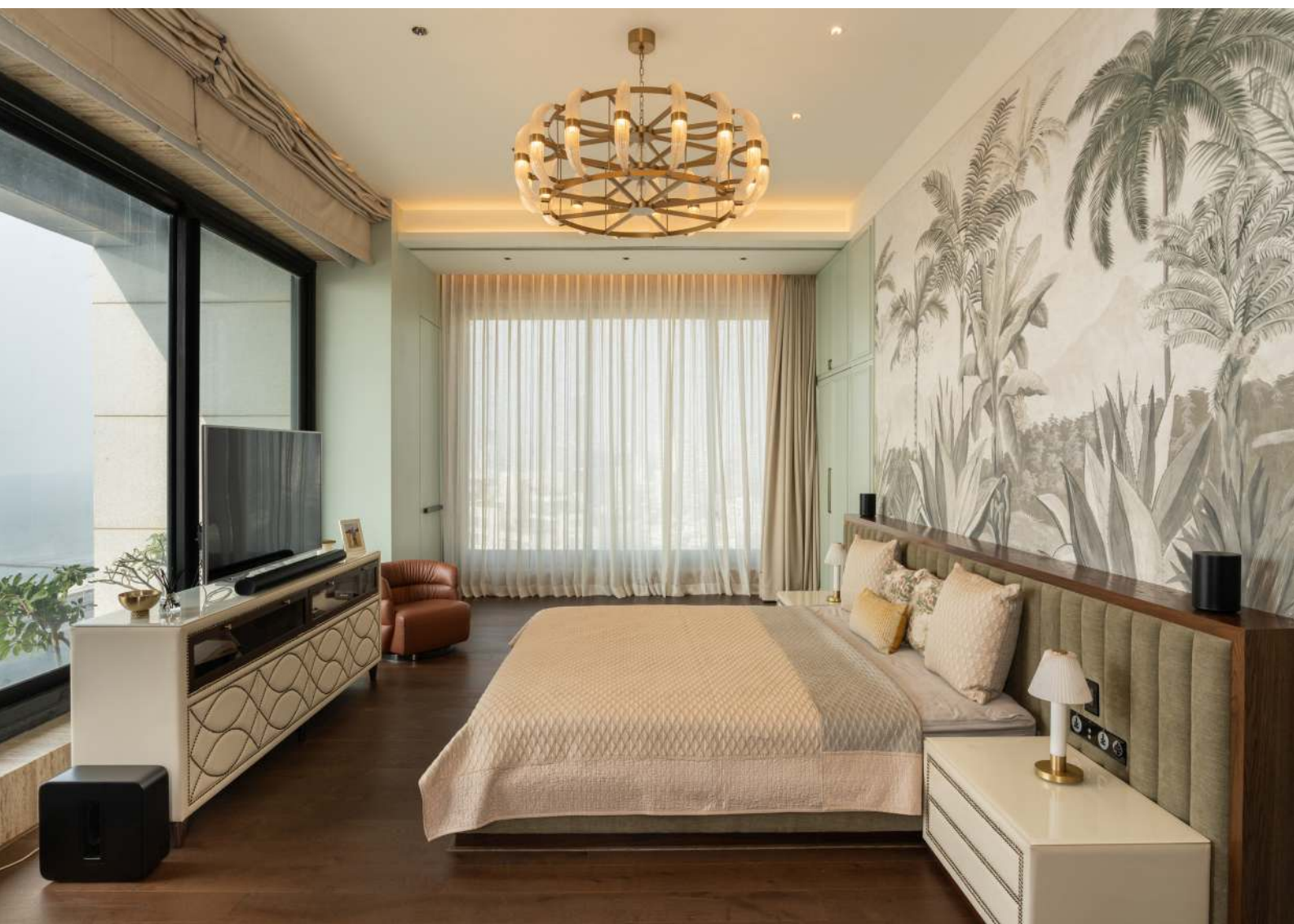
**How does Sonos Move 2 redefine portable premium audio, and what improvements have been made over its predecessor?**

Move 2 represents a significant step forward in portable premium audio. The most meaningful upgrade over its predecessor is

true stereo sound, replacing mono output with a genuinely immersive experience, backed by up to 24 hours of battery life and Automatic Trueplay™ that continuously adapts sound to the surrounding environment. Move 2 is also responsibly designed, with over 40% reduction in idle energy usage and PCR materials. And later this year, the portable lineup grows further with Sonos Play, a new speaker that, for the first time, allows customers to group Play and Move 2 speakers together directly over Bluetooth when away from home, bringing the full Sonos system experience beyond the home.

**With Roam 2, how is Sonos enhancing the ultra-portable audio experience for users on the move?**

Designed for life on the move, Sonos Roam 2 delivers premium, clear sound in an ultra-compact, lightweight and durable design, whether it's at the beach, on a weekend trip, or simply moving between rooms. The focus is uncompromising audio quality in a true grab-





and-go form factor, so the connection to your music remains effortless wherever the day takes you.

**The Era 100 is designed as an entry point into the Sonos ecosystem. How does it deliver performance while appealing to a broader audience?**

Era 100 is often the product that starts the journey. It delivers confident, room-filling stereo sound and deep, balanced bass from a compact design. Its versatility is what makes it invaluable: pair two for stereo, deploy as home theatre rear surrounds, connect to a turntable, or place in additional rooms as the system expands. For installers, it is a product to return to again and again across a single project.

Later this year, we are also introducing Era 100 SL to India, a microphone-free version that offers a more accessible entry point into the Sonos ecosystem, and an ideal surround sound option for clients who want the full home theatre experience without compromise.

**The Era 300 is positioned around spatial audio. How does it elevate the listening experience compared to traditional smart speakers?**

Where traditional smart speakers deliver sound from a single point, Era 300's breakthrough acoustic design features six drivers firing sound forward, upwards and sideways to deliver the most immersive spatial sound experience with Dolby Atmos. Sound that puts you inside the music and places you at the very centre of what the artist created. That last point matters to us deeply. Era 300 was fine-tuned in close collaboration with the Sonos Soundboard, a community of leading artists, producers and creators to ensure what you hear is true to the artist's intent. Spatial audio is a personal experience; some listeners gravitate toward it immediately, while others prefer the familiarity of stereo. Era 300 is our answer for those who want the most immersive out-loud listening experience available.



## Redefining Experiential AV and Smart Home Integration

USK Electronics' Experience Centre brings together AV, automation, and smart living in a fully immersive environment where visitors can experience integrated technologies in real time, rather than as standalone solutions.

USK Electronics, Hyderabad, presents its Luxury AV Lounge as an immersive experience centre that brings together smart living, advanced automation, and professional-grade audiovisual systems. Designed as a fully interactive environment, the space demonstrates how residential elegance and commercial AV performance can seamlessly coexist in a unified, future-ready ecosystem.

Explaining the design concept, R Narayana

Murthy, Director, USK Group of Companies, says, "The Experience Centre is envisioned as a cutting-edge space that showcases both high-end residential AV and commercial-grade systems. It brings together a powerful yet intuitive platform capable of handling complex integrations while delivering a seamless user experience. Designed for versatility, the space transitions effortlessly between immersive entertainment, smart living demonstrations, conferencing, and live



event modes, offering visitors a compelling preview of the full potential of modern AV technology.”

To support both the Residential and Commercial environments, the showroom is designed to display sophisticated solutions and provide real-time experiences to the visitors.

The space was designed to shift effortlessly between immersive entertainment, smart-living demonstrations, conferencing, and live event modes, showcasing for visitors the full spectrum of what modern AV technology can achieve.

With their previous experience of integrating the Crestron in multiple projects, they again opted for the solution. The team at USK

Electronics knew that Crestron was the ideal platform to anchor their hybrid showroom, demonstrating both the residential and commercial use cases. To complete the unique environment, their team created a blended setup using Crestron Home® OS for its sleek interface and a Crestron custom control system for backend logic and control of advanced systems.

Highlighting his preference, R Narayana Murthy, Director, USK Electronics Pvt Ltd, adds, “Choosing Crestron for the new Luxury AV Lounge was an easy decision for us. As long-standing Crestron partners, we trust the reliability and flexibility of the solutions to deliver a truly elevated experience.”

The Technology and Its Advantages

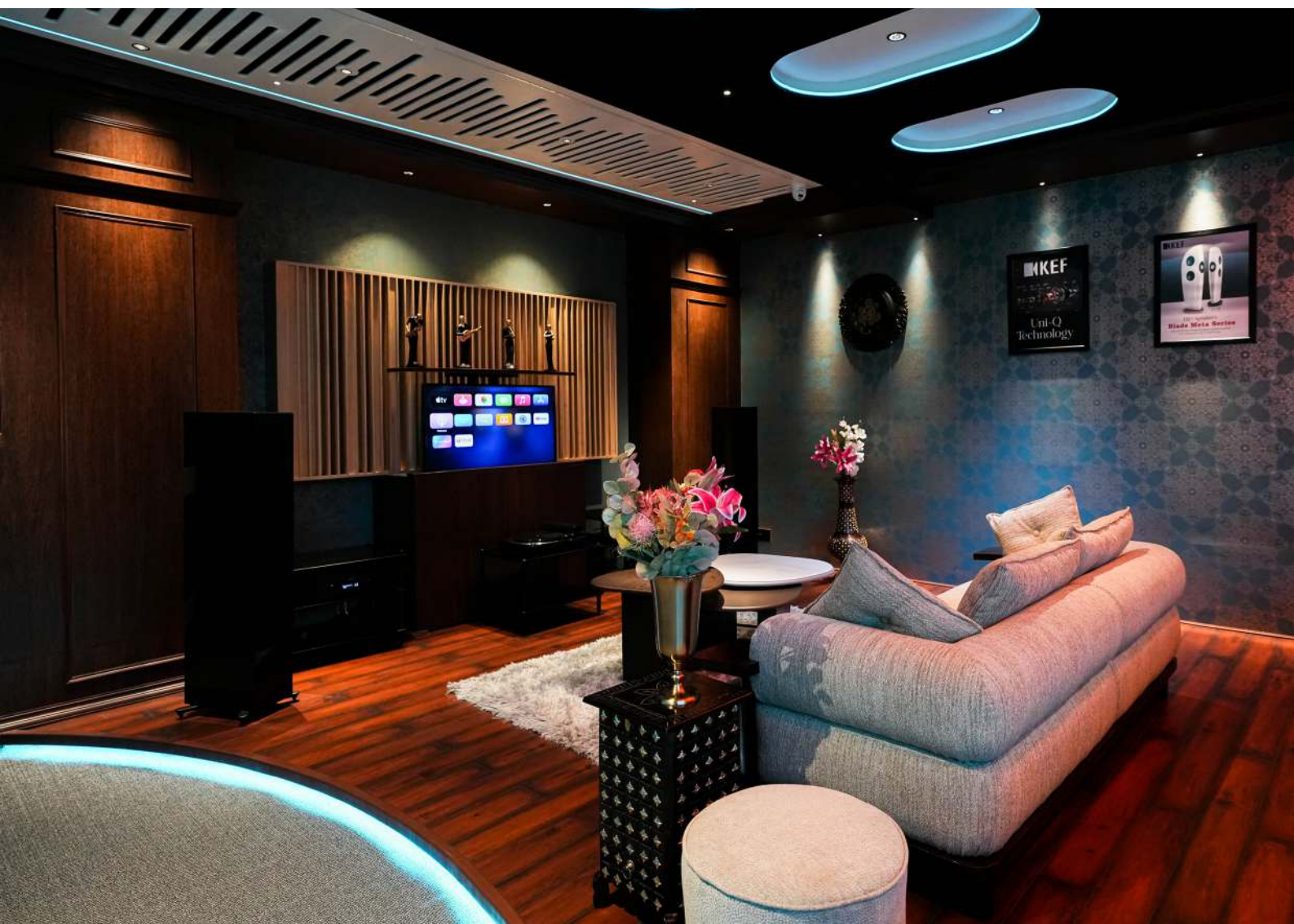


USK Electronics created a fully integrated smart space using the Crestron Home OS paired with a custom Crestron control system, blending a user-friendly interface with the extended possibilities achieved through custom integrations. Crestron Home OS provides an elegant front-end experience ideal for luxury living, while the custom system handles advanced AV logic, professional-grade equipment integration, and deeper control capabilities. This hybrid approach enabled a fast deployment without sacrificing flexibility, creating a single unified platform that showcases Crestron's control capabilities. Chosen for its reliability, scalability, and ability to unify all elements, the Crestron system delivers high-end entertainment alongside effortless everyday control of lighting, audio, HVAC, and security.

The system was designed to transition flawlessly between virtual golf, private events, video conferencing, and large-scale cinematic experiences, all within a single adaptable environment. What sets this project apart is its seamless fusion of luxury design, advanced automation, and immersive technology.

There are many customisation features from mood-based lighting scenes to cinematic viewing and high-end conferencing, all controlled through the custom Crestron system. Flexible room configurations allow the space to shift effortlessly from town hall gatherings to DJ-driven events without sacrificing performance or visual appeal. The "wow" factor lies in dynamic 360° lighting and spatial audio that adapt in real time to each experience. Together, these elements create a fully immersive, future-ready smart space that pushes the boundaries of what a modern multi-use environment can be.

In the residential section, visitors have the opportunity to experience how a truly personalised entertainment space can come to life within the home. With Crestron DM NAX® Audio-over-IP technology, guests can enjoy movie nights and immersive entertainment experiences showcased in the Luxury AV Lounge. Audio flows through the gathering spaces, including the game room, the bar, the living room, and even the indoor golf simulator, creating a cohesive atmosphere throughout. The Crestron touch screens and







Horizon® keypads ensure smooth, consistent control across every area, allowing visitors to easily interact with the technology and tailor each experience to their needs. The environment transforms from an elegant lounge or comfortable living room for private events into a fully realised home cinema, perfectly suited for hosting movie nights.

For a corporate experience, the video conferencing hub uses Crestron 1 Beyond Camera technology to showcase successful hybrid meetings with the Crestron Sightline Experience. Each camera is focused on an individual for remote participants to engage in natural conversation. Crestron DM NVX® AV-over-IP distributes video throughout the conferencing area, ensuring each participant is viewing the same content. Content presented

on the screens can come from any guest using a Crestron AirMedia® presentation system. Guests can type in the code from the displays onto their own computer and easily connect to share their own content.

In conclusion, the USK Luxury AV Lounge brings together leading brands such as Crestron, JVC, KEF, NAD Electronics, K-array, and Strom Audio to create a seamless, experience-led demonstration of integrated AV and smart home technologies.

By showcasing real-world applications of automation, acoustics, and control systems, the lounge strengthens trust among architects, designers, and clients, positioning USK as an experience-driven partner rather than a conventional AV vendor.



## Versatile Smart Lighting for Modern Living and Entertainment

Designed by Litelab, this breakout space showcases a thoughtful lighting design that effortlessly adapts from a warm, intimate setting to a vibrant entertainment hub through intelligent controls and seamless architectural integration.

Designed by Litelab, the lighting design for this breakout space of a private residence is tailored for versatility, effortlessly transitioning from a cosy drawing room and dining area to an energetic party pod. The system integrates seamlessly with the space, using adjustable and colour-changing LEDs to shift moods as needed. For everyday use, the lighting creates a warm, inviting atmosphere. When the space is used for parties, it transforms into a vibrant setting with minimal effort. Emphasising

minimalism, the design avoids standalone decorative fixtures, instead incorporating lighting that blends seamlessly with the space's architecture and adjusts to different occasions.

### Design Approach, Concept and Narrative

For this project, the lighting design was meticulously planned to create a dynamic and adaptable space. The core objective was to



integrate advanced technology with aesthetic appeal while ensuring functionality. The design incorporates a flexible approach, utilising a blend of RGBW luminaires and sophisticated control protocols, including DALI and DMX, to achieve a seamless fusion of technology and design.

The lighting design is structured into three distinct verticals. The first vertical focuses on general lighting, incorporating downlights and ceiling coves to provide ambient illumination. This layer ensures that the space remains well-lit and functional for everyday use. The second vertical includes decorative lighting elements that enhance the visual appeal of the space. These luminaires are selected for their aesthetic contribution, adding character and style to the environment. The final vertical addresses joinery lighting, where specific



architectural elements are highlighted to add brilliance and depth to the overall design.

To cater to various scenarios, the lighting setup includes three distinct scenes. The daylight scene provides natural and functional illumination, perfect for daytime activities. The



night lighting scene offers a softer, ambient light suitable for evening comfort. The third scene, designed for a vibrant party atmosphere, utilises RGB lighting effects controlled via DMX and DALI controllers to create an energetic and engaging environment. Each of these scenes allows for multiple customizable scenarios, giving the client the flexibility to adjust the lighting according to their preferences and needs.

This design not only enhances the visual aesthetics of the space but also ensures practical functionality and adaptability. The integration of advanced lighting controls and automation allows for a versatile lighting experience, balancing both form and function effectively.

### **Creativity and innovation**

The project brief called for a versatile lighting scheme that seamlessly transitions between daily use and social gatherings, tailored for a young music director. The objective was to create an adaptable environment through dynamic lighting that blends with music, using colour changes to suit different scenarios.



The design incorporates RGBW luminaires to provide a range of vibrant colours, enhancing the space's atmosphere for both functional and social settings.

A key focus was on integrating smart solutions with advanced lighting controls and home automation, ensuring the system is user-friendly and intuitive. The setup allows for effortless adjustments to accommodate various activities, from everyday living to entertaining guests. This approach balances technological sophistication with practical usability, making it easy for the client to customise lighting without complex controls.

Overall, the lighting design aims to enrich the space with aesthetic appeal and functionality, providing a versatile solution that adapts to the client's needs while maintaining simplicity and ease of operation.

#### **Sustainable practice:**

Given the project's focus on creativity and automation, we integrated numerous sensors to ensure that lighting is activated based on motion, enhancing both convenience



and energy efficiency. The system includes dimmable options that adjust light levels according to the number of occupants, further contributing to power savings.

The design brief emphasised a subtle aesthetic, leading us to choose minimal fixtures and prioritise selective, impactful lighting rather than relying on overly bright sources. This approach not only aligns with the project's creative vision but also results in significant energy savings compared to traditional residential setups. The combination of automation, motion-triggered lighting, and efficient fixture choices ensures a sophisticated, eco-friendly solution that meets the client's needs for both functionality and sustainability



## Redefining Intelligent Living

Schneider Electric is strengthening its smart home and building portfolio with new advancements in intelligent automation, premium KNX solutions, energy efficiency, cybersecurity, and India-centric technologies tailored for connected living. Here's a closer look at the brand's latest innovations and vision for the future of smart spaces.

As connected living continues to evolve, Schneider Electric remains at the forefront of innovation with solutions that combine intelligent automation, elegant design, sustainability, and cybersecurity. At Smart Home Expo 2026, we showcased our complete range of KNX solutions, designed to work seamlessly together with the added benefits of simplicity, flexibility, and reliability. Whether it's for a small family home or a large office complex, we demonstrated how our solutions are flexible, easy to configure, order, and install, and designed to increase comfort and security, while decreasing energy consumption.

With a strong focus on both residential and commercial applications, Schneider Electric



demonstrated how technology can seamlessly integrate into everyday environments through scalable, standards-based, and secure automation ecosystems.

### Intelligent Solutions for Modern Living



One of the key highlights of our presence this year is the launch of ELV Range which compliments our Indian Standard Wiring Device accessories and UNICA X keypads with matching British standard wiring devices, showcasing our focus on delivering next-generation smart home solutions that combine technology, design, and ease of integration.

SpaceLogic KNX is not only a state-of-the-art home automation solution that enables controlling and managing any space, but also emphasizes energy efficiency. For example, it can manage EV electric car charges through smart load management to help reduce energy costs. The Wiser KNX app allows to manage all KNX functions, like energy, heating and cooling, safety, lighting, and shutters, directly from a smartphone. With its intuitive and clear design, it brings the smart home experience to the fullest.

It also adds interoperability on top of its connectivity, letting users integrate products

from third-party and other protocols as well as non-KNX products and systems such as Sonos, Apple, Amazon, and Google voice assistant, and many, many more.

### **Premium KNX Ecosystems**

Unica X The Comprehensive range of ultra-slim and sophisticated KNX switches features unique ergonomic designs, advanced connectivity features Our all-new comprehensive range of ultra-slim and sophisticated switches and sockets features unique ergonomic designs, advanced connectivity features, and so much more. UNICA X isn't just a switch – it's the epitome of excellence and luxury that is crafted to complement your unique style and sensibilities. UNICA X adheres to the minimalist design philosophy and seamlessly blends into your walls. This collection of stainless-steel wiring devices comes in a never-seen-before slim profile with a finish thickness of just 6.5 mm. It stands as a testament to our intricate, innovative, and exquisite workmanship. With every touch, UNICA X invites you to a sensory

experience and transforms your space into contemporary elegance. The ultra-thin UNICA X is crafted with premium stainless steel, which undergoes a high-intensity metal forging process. These luxurious switches and sockets come in six exclusive colors and finishes, which seamlessly integrate into the grandeur of your walls. UNICA X is the perfect match for modern-day, minimalist interiors.

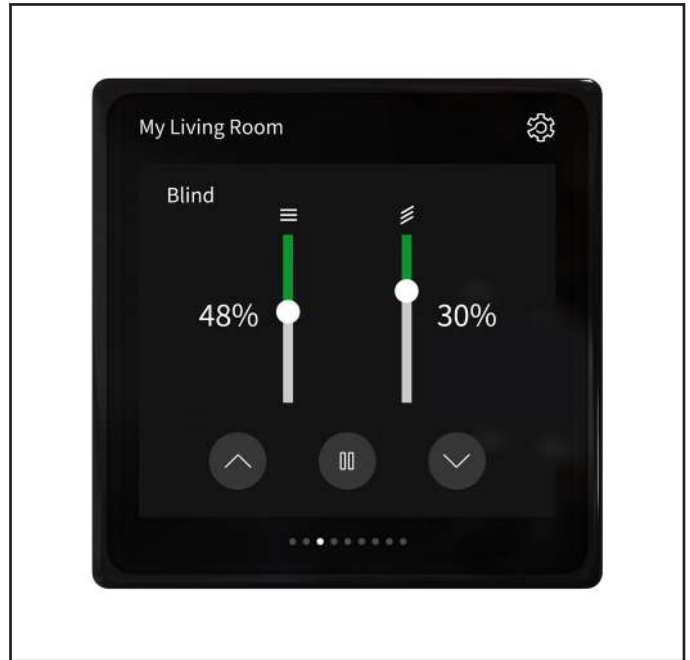
### Innovation Beyond Design

While aesthetics continue to play an important role in smart living, Schneider Electric’s innovation strategy extends far beyond visual appeal. The company is increasingly focused on intelligent integration, lifecycle-driven sustainability, and operational efficiency.

SpaceLogic KNX can be scaled to fit the needs of commercial buildings from small to large size. It offers solutions that can be tailored to the specific needs of the building, providing efficient control, monitoring, and automation of different systems.

Seamlessly integrated with EcoStruxure, our IoT-enabled, plug-and-play, open, interoperable architecture and platform, it can bring additional functionalities for all kinds of projects, from healthcare to retail, including:

- Greater convenience through automated, managed, and remotely-controlled



functions.

- Integrated services like critical equipment monitoring and fault alarms that help avoid unplanned maintenance, costly downtime, and reputational risk.
- Predictive maintenance to help ensure maximum uptime and protect people and property.

The Schneider Electric KNX range allows separate buildings to communicate securely via KNX IP secure systems and routers. It uses the highest authentication and encryption standards defined by KNX and compliant with Schneider Electric world-class cybersecurity guidelines.

### Localised Solutions for the Indian Market

Recognising India as a strategic growth market, Schneider Electric is actively tailoring its KNX portfolio to meet local requirements and operating conditions.

Launch of the ELV Switch Range, strengthening our portfolio with integrated low-voltage solutions that complement KNX-based automation and deliver enhanced functionality and user convenience.

An artistic impression of an Indian-format modular design featuring 1-Gang and 2-Gang ELV push buttons, compatible with Unica &

Miluz Cover Plates and powered by Modular bricks.

### Strong Momentum for SpaceLogic KNX

The company's SpaceLogic KNX range continues to see strong market acceptance across premium residential, hospitality, and commercial projects. Customers increasingly value the platform's reliability, scalability, design flexibility, and alignment with sustainability goals.

Schneider Electric's Hybrid solutions have also gained traction by enabling a phased approach to automation. By combining traditional electrical infrastructure with intelligent KNX controls, these systems allow users to gradually transition toward fully automated environments while immediately benefiting from enhanced comfort, efficiency, and operational control.

### Simplifying the Smart Home Experience

For system integrators, consultants, and design professionals, Schneider Electric focuses on reducing complexity through scalable architectures, reliable products, and lifecycle-focused tools that simplify commissioning and long-term maintenance.

For homeowners, the emphasis remains on comfort, simplicity, and future readiness.



Whether through switches, touch panels, or mobile applications, Schneider Electric's ecosystem is designed to deliver personalised automation, intuitive control, energy efficiency, and seamless compatibility with evolving technologies.

### Enabling Industry Growth

Having participated in multiple editions of Smart Home Expo, Schneider Electric views the platform as an important catalyst for the growth of India's smart home and smart building ecosystem.

By bringing together technology providers, architects, developers, consultants, system integrators, and end users, the expo continues to drive awareness around intelligent automation, sustainability, interoperability, and cybersecurity.

For Schneider Electric, the event provides an opportunity to demonstrate practical, real-world applications of smart technologies while engaging directly with the market to better understand evolving expectations and opportunities.

As the industry shifts toward smarter, more efficient, and sustainable living environments, Schneider Electric continues to strengthen its role as a trusted technology partner shaping the future of connected spaces.

# Light Years Theory: A Shared Home for the Global Lighting Industry

## Akshara Vyas

Founding Curator, Light Years Theory

*Akshara Vyas writes on Light Years Theory, a platform designed to unify the global lighting community through shared knowledge, collaboration, and meaningful industry exchange. She explores how this collective ecosystem aims to empower designers, manufacturers, educators, researchers, and enthusiasts by creating a more connected, informed, and future-ready industry.*

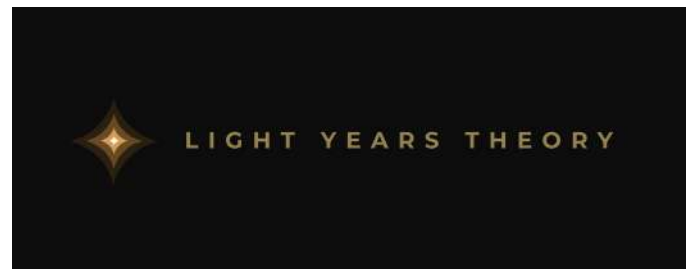
The lighting industry shapes the way we experience the world. Global, ever-evolving, and driven by remarkable people, it thrives on creativity, innovation, and collaboration. Yet, in an industry this expansive, knowledge, resources, and conversations often remain scattered.

Light Years Theory was created to bring them together, to build the shared infrastructure the industry has long deserved. A unified space to connect, contribute, and access the collective intelligence of the field. Built with purpose, for the people who give light its meaning.

### What is Light Years Theory?

Light Years Theory is a global network built around one powerful idea: light.

It brings together designers, manufacturers,



educators, researchers, and enthusiasts within a single, shared ecosystem created to advance the lighting industry through collective knowledge and collaboration.

More than a directory or a publishing platform, Light Years Theory is a living infrastructure for the industry. It is not built for passive broadcasting, self-promotion, or surface-level engagement. Instead, it is designed around meaningful exchange, where consumption is just as valuable as contribution.

EST. MMXXV · COMING SOON

# LIGHT YEARS THEORY

*Light after Dark*

LIGHT IS THE SUBJECT. THE COLLECTIVE IS THE AUTHORITY.

This network belongs to its people.

Register at the **Observatory** to access resources, insights and connect with the global lighting community.  
Read more about the platform on **First Light**.

ENTER THE OBSERVATORY

SIGN IN

99 SOULS IN THE OBSERVATORY

Members come not only to share ideas, but to gain access to curated tools, trusted references, product intelligence, industry insights, and a community dedicated to making professional practice more informed, connected, and future-ready.

At its core, Light Years Theory exists to sharpen the way the lighting industry learns, collaborates, and evolves together.

## The Platform: Two Key Layers

Light Years Theory operates across two distinct layers:

Dark Matter and The Inventory. Each serves a different function, but together they form an ecosystem designed to support multiple dimensions of professional life in the lighting industry.

### Layer One: Dark Matter

Dark Matter is the knowledge engine at the core of Light Years Theory. It is where the community thinks, exchanges, learns and stays informed. Dark Matter is structured across three categories, each addressing a different kind of need.

## CONVERSATION AND CONTENT

The Circuit is the open floor. A free community

space where members ask questions, share observations and exchange ideas in real time. No gatekeeping, no hierarchy. Whether you are a seasoned lighting designer or just stepping into the field, The Circuit is where the global conversation happens.

The Lightboard. The editorial layer. A space that brings together articles, essays and project showcases from practitioners worldwide. It offers a closer view of the people and work shaping the industry, from large-scale architectural installations to experimental concepts pushing the boundaries of what light can do.

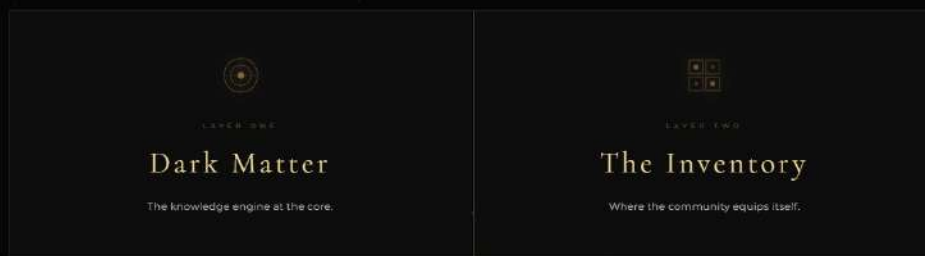
The Loop. The industry pulse. News, upcoming events, competitions and global developments in one place, so members stay connected to what is happening without having to search for it across multiple sources.

The Source. Where opportunity lives. The Source connects job listings, internships and entry points with those looking to step into or move within the field. For studios and companies, it is a direct line to a global pool of lighting talent.

## KNOWLEDGE AND STANDARDS

The Deep Field. The reference layer that the industry has long required. A growing repository of principles, technical references

## Two Key Layers



and global standards, grounded in credible research and built to be genuinely useful. For those who want to go further, The Deep Field includes study resources that allow practitioners to engage with the material at depth. This is where the industry comes to understand, not just to browse.

### PRODUCTS AND APPLICATIONS

The Spectrum. A database of lighting products evaluated for performance, compliance and environmental responsibility. The Spectrum gives designers and specifiers a space to explore, compare and understand products clearly and objectively. Supported by a growing library of brands and application-led references, it is built to make specification sharper and more informed.

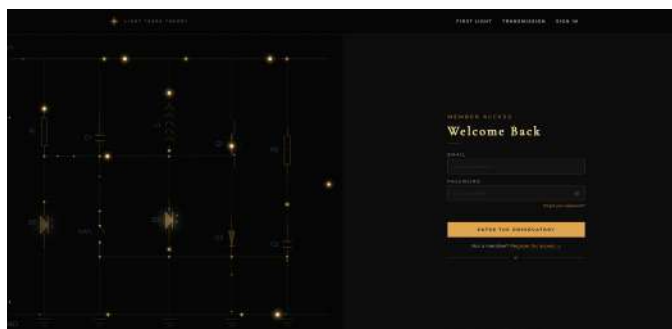
#### Layer Two: The Inventory

The Inventory is where the community equips itself. A considered range of lighting tools and hard-to-source instruments sits alongside curated products, sourced globally and brought into a single destination for designers, vendors and practitioners.

Rather than spending hours tracking down specialist equipment across separate suppliers and regions, members can access what they need in one place. The Inventory is built to be practical, not simply decorative.

#### The Observatory

At the heart of the Light Years Theory experience is The Observatory, the member



dashboard and control module for members. Each member who currently appears as a star in a living sky will have the ability to contribute to the various wings of the platform.

It is both functional and poetic, which feels right for an industry built around the relationship between light and space. The Observatory is where you land when you arrive, and where you realise you are not here alone.

#### Transmissions

Transmissions is the contact point of the platform. Open for conversation, collaboration and contribution. Whether you are a manufacturer looking to reach a global audience, a publication interested in partnership, or an individual ready to add your voice, Transmissions is where that begins.

#### Where It Stands Today

Since launching, Light Years Theory has grown to nearly 100 members across 11 countries. The Circuit is live. The Observatory is open. The platform is still early, but it is already proving the point: the industry was ready for a shared home. It just needed someone to build it.

## Devialet Brings the Spirit of Roland-Garros to Life with Phantom Ultimate 108 dB

French audio innovator Devialet has partnered with the iconic Roland-Garros to unveil the limited-edition Devialet Phantom Ultimate 108 dB | Roland-Garros speaker, blending high-performance acoustics with the spirit and aesthetics of the legendary clay-court tournament.

Designed as a tribute to the art of the game, the speaker features reimagined side panels inspired by Court Philippe-Chatrier, highlighted with warm Clay Red tones, high-gloss white lines, reflective detailing, and the signature Roland-Garros logo. The design captures the precision, emotion, and elegance associated with the tournament while bringing French savoir-faire into the world of premium audio.



At the core of the speaker is Devialet's advanced acoustic engineering, delivering full-body sound performance up to 108 dB with an impressive frequency response ranging from 14 Hz to 35 kHz.

Powered by Devialet's proprietary ADH® (Analog Digital Hybrid) new-generation technology, the system combines analog and digital amplification to deliver electrifying sound performance while consuming less power and reproducing crystal-clear frequencies up to 35 kHz.

The speaker also incorporates HBI® (Heart Bass Implosion) technology, engineered to push the boundaries of infra-bass down to 14 Hz within an ultra-compact form factor. Two perfectly synchronised lateral woofers operate in unison to eliminate unwanted vibrations and deliver deep, impactful bass. Enhancing the listening experience further

is Devialet's AVL™ (Adaptive Volume Level) technology, which uses real-time dynamic equalisation to maintain smoother and more balanced sound reproduction. Whether it is explosive match moments or subtle commentary, every detail remains clear and immersive.

Additionally, Devialet's SAM® (Speaker Active Matching) software continuously adapts to both transient and steady-state signals in real time, enabling the Phantom Ultimate 108 dB to reproduce phase and amplitude with exceptional precision and fidelity.

With this collaboration, Devialet and Roland-Garros celebrate a shared commitment to performance, craftsmanship, and emotion, bringing the thrill of centre court into the home through immersive sound and iconic design.

# ADI Debuts Next-Generation Control4 T5 In-Wall Touchscreen



ADI introduced the next-generation Control4 T5 In-Wall Touchscreen, a redesigned user interface engineered to significantly simplify installation while delivering an enhanced everyday control experience for smart home users. Available now, the T5 replaces the previous T4 generation with faster processing, a slimmer flush-mount design, and expanded functionality.

“The T5 In-Wall Touchscreen reflects ADI’s commitment to advancing the smart home experience through thoughtful design and practical innovation. With a slimmer profile, faster performance, and simplified PoE installation, it helps integrators work more efficiently while delivering a more responsive and intuitive experience for homeowners. Built to support upcoming Control4 features, the T5 is designed to evolve with the system over time,” said Eric Fritz, Sr. Director of Product Management ADI.

Designed as a central interaction point within the Control4 ecosystem, the T5 mounts to the wall with a minimal bezel for increased screen area. Magnetic trim rings, including options matching Control4 Lux Lighting colours as well as a paintable trim, allow integrators to align the interface with lighting keypads and room finishes.

The T5 touchscreen also features a new proximity sensor that intelligently wakes the display as users approach, presenting a dynamic screensaver that offers quick access to active media sessions and commonly used controls.

Quad microphones with beamforming and noise cancellation support clear intercom communication and voice capture, while a configurable dark mode is designed for light-sensitive spaces such as home theatres.



No weak links, no loose ends.  
**Secure your interiors with Yale.**



USB port and Mechanical key for  
**EMERGENCY**

# Smart Interior Lock YDL325 Series



Yale Home

Yale Home  
Connectivity



Built-in **Bluetooth**



YDL325 S



YDL325 C

For more inquiries please  
WhatsApp **6387 409 260**  
Email: [Customer\\_Enquiry.India@assaabloy.com](mailto:Customer_Enquiry.India@assaabloy.com)

**24/7**  
365 DAYS

**TOLL FREE NO**  
**1800-103-5606**  
[www.yalehome.com](http://www.yalehome.com)





India

# Redefining Cinematic Brilliance

Experience the pinnacle of Laser Home Cinema Projection with Unmatched Color Accuracy in 100% DCI-P3



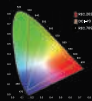
## W5800 | W5850

4K Home Cinema Laser Projector

**4K**  
ULTRA HD



**CinematicColor**  
100% DCI-P3



**2100AL Brightness**  
@ 100% DCI-P3

**BLUE CORE**  
LASER

**1.6x**  
Motorized  
Zoom Lens

Available at select Home AV System Integrators across India



Corporate Office: BenQ India Pvt. Ltd.

9B Building, III<sup>rd</sup> Floor, DLF Cyber City, DLF Phase III, Gurgaon, Haryana, India - 122002

Tel: +91 124-450 1400, Fax: +91 124-450 1400

www.BenQ.in | sales.enquiryin@BenQ.com | 1800 419 9979



Scan here to Book your Demo

W5800 / W5850 comes with 3-years on-site warranty.

The laser light source is also covered by a warranty of 3 years or 15,000 hours whichever is earlier.

www.BenQ.in | Like BenQ India on